

UNITED STATES  
DEPARTMENT OF THE INTERIOR  
GEOLOGICAL SURVEY

30-039-23287

## APPLICATION FOR PERMIT TO DRILL, DEEPEN, OR PLUG BACK

## 1a. TYPE OF WORK

DRILL ☒DEEPEN ☐PLUG BACK ☐

## b. TYPE OF WELL

OIL  
WELL ☐GAS  
WELL ☒

OTHER

SINGLE  
ZONE ☒MULTIPLE  
ZONE ☐

## 2. NAME OF OPERATOR

DUGAN PRODUCTION CORP.

## 3. ADDRESS OF OPERATOR

P. O. Box 208, Farmington, NM 87499

## 4. LOCATION OF WELL (Report location clearly and in accordance with any special requirements.)

At surface

1840' FNL - 680' FWL

At proposed prod. zone

## 14. DISTANCE IN MILES AND DIRECTION FROM NEAREST TOWN OR POST OFFICE:

Counselors, NM is 1½ mile SW

## 15. DISTANCE FROM PROPOSED\*

LOCATION TO NEAREST  
PROPERTY OR LEASE LINE, FT.

(Also to nearest drlg. unit line, if any)

680'

## 18. DISTANCE FROM PROPOSED LOCATION\*

TO NEAREST WELL, DRILLING, COMPLETED,  
OR APPLIED FOR, ON THIS LEASE, FT.

1500'

## 16. NO. OF ACRES IN LEASE

280

17. NO. OF ACRES ASSIGNED  
TO THIS WELL

160

## 19. PROPOSED DEPTH

5700'

## 20. ROTARY OR CABLE TOOLS

Rotary

## 21. ELEVATIONS (Show whether DF, RT, GR, etc.)

6910' GL

## 22. APPROX. DATE WORK WILL START\*

9-2-83

## 23.

## PROPOSED CASING AND CEMENTING PROGRAM

SIZE OF HOLE	SIZE OF CASING	WEIGHT PER FOOT	SETTING DEPTH	QUANTITY OF CEMENT
12-1/4"	8-5/8"	32	200'	135 sx (159.3 cu.ft.) to surface
7-7/8"	4-1/2"	11.6/10.5	5700'	1630 cu.ft. to surface in 2 stages.

Plan to drill with spud mud to set surface casing at 200'. Will then drill with mud-water-gel mixture to test the Gallup Formation. Plan to run IES & CDL logs, and if the well appears productive will run 1½" casing, cementing in 2 stages. Will selectively perforate, frac, clean out after frac, and complete well using 2-3/8" O.D. tubing.

RECEIVED

SEP 1 - 1983

OIL CON. DIV.

DIST. 3

IN ABOVE SPACE DESCRIBE PROPOSED PROGRAM: If proposal is to deepen or plug back, give data on present productive zone and proposed new productive zone. If proposal is to drill or deepen directionally, give pertinent data on subsurface locations and measured and true vertical depths. Give blowout preventer program, if any.

## 24.

SIGNED

TITLE

Petroleum Engineer

DATE 8-1-83

(This space for Federal or State office use)

PERMIT NO.

APPROVAL DATE

APPROVED BY

TITLE

CONDITIONS OF APPROVAL, IF ANY:

APPROVED

AS AMENDED

DATE

AUG 29 1983

Robert Moor

AREA MANAGER  
FARMINGTON RESOURCE AREA

\*See Instructions On Reverse Side

NMOC

## OIL CONSERVATION DIVISION

P. O. BOX 2088

Form C-102  
Revised 10-1-78

STATE OF NEW MEXICO

ENERGY AND MINERALS DEPARTMENT

SANTA FE, NEW MEXICO 87501

All distances must be from the outer boundaries of the Section.

Operator Dugan Production Corporation		Lease Celsius		Well No. 2	
Init Letter E	Section 14	Township 23 North	Range 6 West	County Rio Arriba	
Actual Footage Location of Well: 1840 feet from the North line and 680 feet from the West line					
Ground Level Elev. 6910	Producing Formation Gallup		Pool Counselors Gallup Assoc. O & G		Dedicated Acreage: 160 Acres

1. Outline the acreage dedicated to the subject well by colored pencil or hatchure marks on the plat below.
2. If more than one lease is dedicated to the well, outline each and identify the ownership thereof (both as to working interest and royalty).
3. If more than one lease of different ownership is dedicated to the well, have the interests of all owners been consolidated by communitization, unitization, force-pooling, etc?

☒ Yes ☐ No If answer is "yes," type of consolidation Communitization

If answer is "no," list the owners and tract descriptions which have actually been consolidated. (Use reverse side of this form if necessary.)

No allowable will be assigned to the well until all interests have been consolidated (by communitization, unitization, forced-pooling, or otherwise) or until a non-standard unit, eliminating such interests, has been approved by the Division.

Fee Merrion O & G 1840'	Dugan Prod. Corp. 50%
680' - (C)	McHugh 50%
SEC. 14	
RECEIVED AUG 3, 1983 U. S. GEOLOGICAL SURVEY FARMINGTON, N. M.	
RECEIVED SEP 1 - 1983 OIL CON. DIV. DIST. 3	

## CERTIFICATION

I hereby certify that the information contained herein is true and complete to the best of my knowledge and belief.

*Thomas A. Dugan*  
Name  
Thomas A. Dugan

Position  
Petroleum Engineer

Company  
Dugan Production Corp.

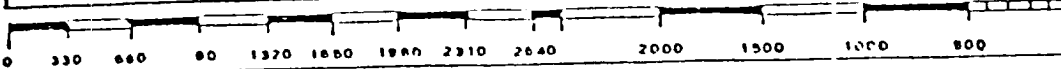
Date  
8-1-83

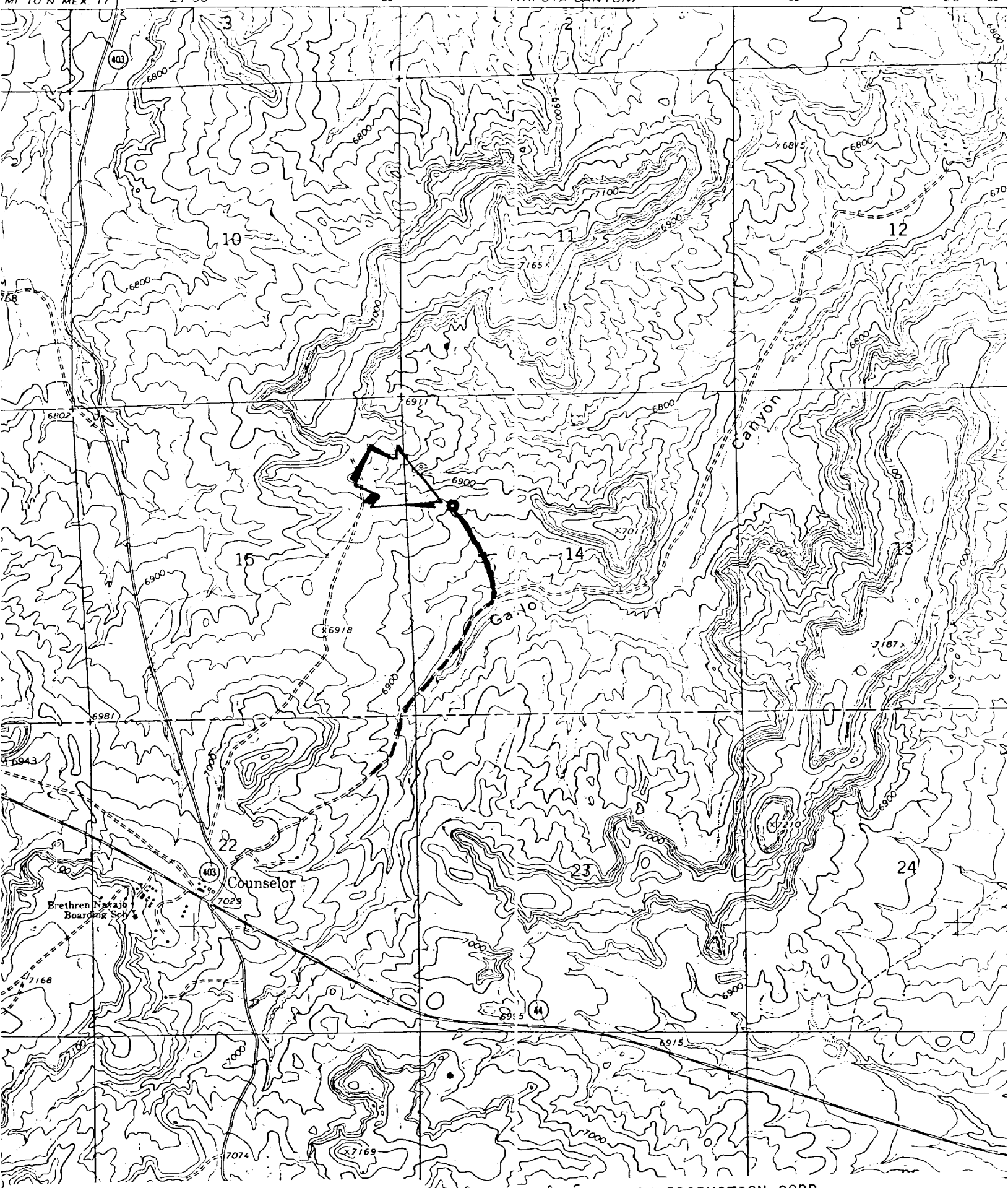
EDGAR L. RISENHOOVER  
NEW MEXICO  
5979  
I certify that the well location is correct to the best of my knowledge and belief, and that the same is correct to the best of my knowledge and belief.

Date Surveyed  
July 25, 1983

Registered Professional Engineer  
and/or Land Surveyor

*Edgar L. Risenhoover*  
Certificate No. 5979  
Edgar L. Risenhoover, L.S.





Existing Road

Access Road

DUGAN PRODUCTION CORP.  
Celsius #2  
Exhibit E