

6 BLM, Fmn, 1 McHugh, 2 Celsius
UNITED STATES
DEPARTMENT OF THE INTERIOR
GEOLOGICAL SURVEY

1 File
SUBMIT IN TRIPLICATE*
(Other instructions on
reverse side)

Form approved.
Budget Bureau No. 42-R1425.

30-039-23301

APPLICATION FOR PERMIT TO DRILL, DEEPEN, OR PLUG BACK

1a. TYPE OF WORK

DRILL ☒

DEEPEN ☐

PLUG BACK ☐

b. TYPE OF WELL

OIL
WELL ☐

GAS
WELL ☒

OTHER

SINGLE
ZONE ☒

MULTIPLE
ZONE ☐

2. NAME OF OPERATOR

DUGAN PRODUCTION CORP.

3. ADDRESS OF OPERATOR

P. O. Box 208, Farmington, NM 87499

4. LOCATION OF WELL (Report location clearly and in accordance with any State requirements.)

At surface

660' FSL - 720' FWL

At proposed prod. zone

14. DISTANCE IN MILES AND DIRECTION FROM NEAREST TOWN OR POST OFFICE*

Counselors, NM is 2 1/2 miles southwest

15. DISTANCE FROM PROPOSED*

LOCATION TO NEAREST
PROPERTY OR LEASE LINE, FT.
(Also to nearest drig. unit line, if any)

660'

16. NO. OF ACRES IN LEASE

440

17. NO. OF ACRES ASSIGNED
TO THIS WELL

160

18. DISTANCE FROM PROPOSED LOCATION*

TO NEAREST WELL, DRILLING, COMPLETED,
OR APPLIED FOR, ON THIS LEASE, FT.

1/2 mile

19. PROPOSED DEPTH

5665'

20. ROTARY OR CABLE TOOLS

Rotary

21. ELEVATIONS (Show whether DF, RT, GR, etc.)

6902' GL

DRILLING OPERATIONS AUTHORIZED ARE
SUBJECT TO COMPLIANCE WITH ATTACHED

"GENERAL REQUIREMENTS"

PROPOSED CASING AND CEMENTING PROGRAM

22. APPROX. DATE WORK WILL START*

October 2, 1983

This action is subject to administrative
appeal pursuant to 30 CFR 290.

SIZE OF HOLE	SIZE OF CASING	WEIGHT PER FOOT	SETTING DEPTH	QUANTITY OF CEMENT
12-1/4"	8-5/8"	32#	200'	159.3 cf to surface
7-7/8"	4-1/2"	11.6/10.5#	5665'	1630 cf to surface in 2 stages

Plan to drill with spud mud to set surface casing at 200'. Will then drill with a water-mud-gel mixture to the Gallup formation. Plan to run IES and CDL logs, and if the well appears productive will then run 4 1/2" casing, cementing in 2 stages. Will selectively perforate, frac, clean out after frac, and complete well using 2-3/8" O.D. tubing.

IN ABOVE SPACE DESCRIBE PROPOSED PROGRAM: If proposal is to deepen or plug back, give data on present productive zone and proposed new productive zone. If proposal is to drill or deepen directionally, give pertinent data on subsurface locations and measured and true vertical depths. Give blowout preventer program, if any.

24.

SIGNED

Thomas A. Dugan

TITLE

Petroleum Engineer

DATE

8-11-83

(This space for Federal or State office use)

PERMIT NO.

APPROVAL DATE

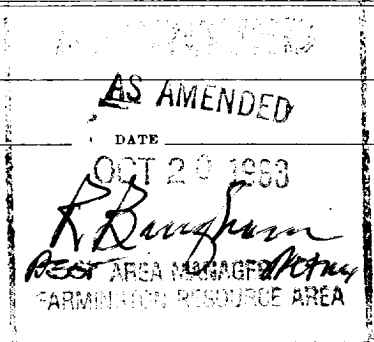
APPROVED BY

TITLE

CONDITIONS OF APPROVAL, IF ANY:

*See Instructions On Reverse Side

NMOCC



OIL CONSERVATION DIVISION

P. O. BOX 2088

Form C-102
Revised 10-1-78STATE OF NEW MEXICO
ENERGY AND MINERALS DEPARTMENT

SANTA FE, NEW MEXICO 87501

All distances must be from the outer boundaries of the Section.

Operator Dugan Production Corporation		Lease Fahrenheit		Well No. 1	
Unit Letter M	Section 11	Township 23 North	Range 6 West	County Rio Arriba	
Actual Footage Location of Well:					
660 feet from the South		line and 720 feet from the West		line	
Ground Level Elev. 6902	Producing Formation Gallup		Pool Counselors Gallup Assoc. O&G		Dedicated Acreage: 160 Acres

1. Outline the acreage dedicated to the subject well by colored pencil or hachure marks on the plat below.

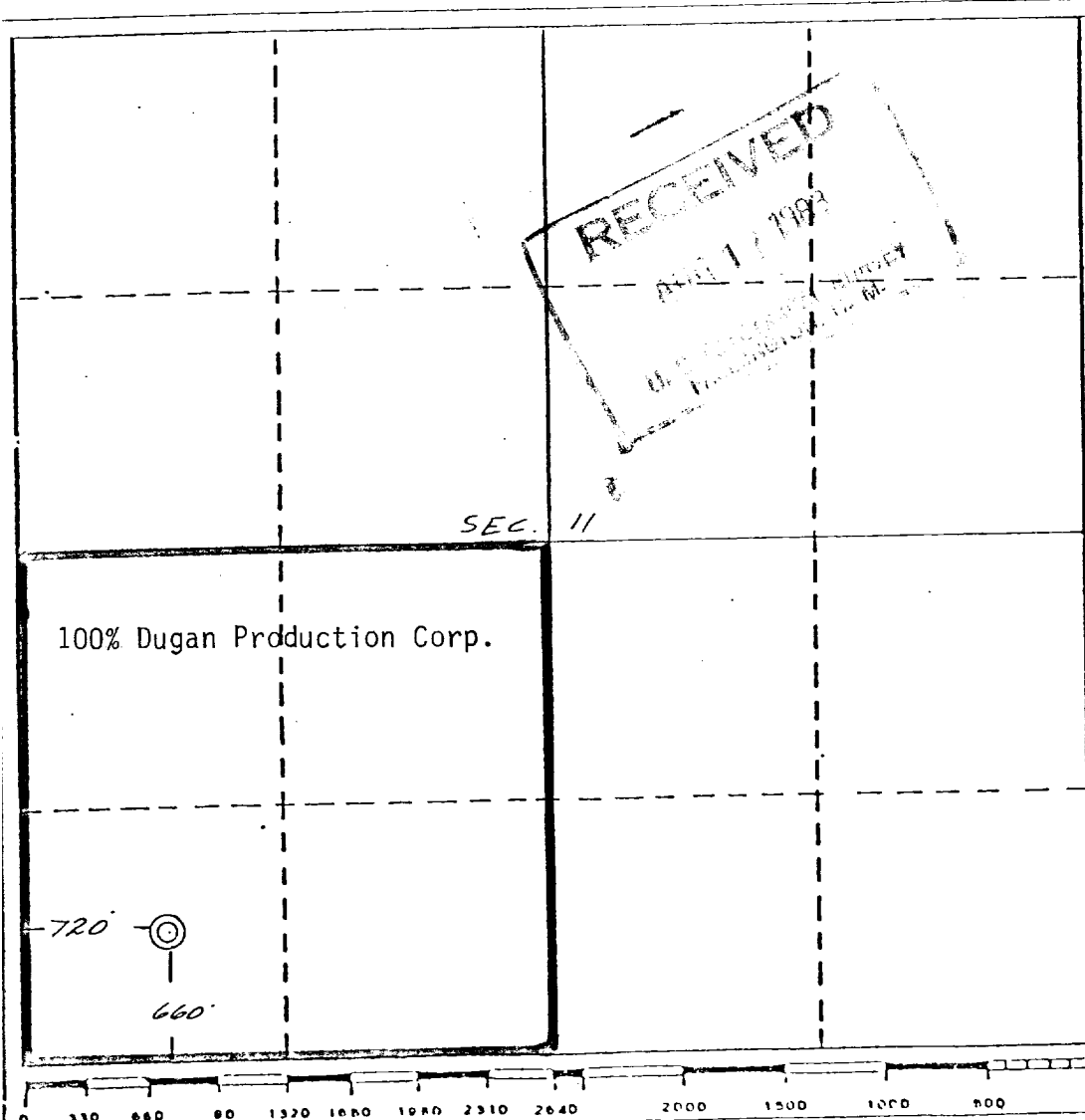
2. If more than one lease is dedicated to the well, outline each and identify the ownership (including all working interest and royalty).

3. If more than one lease of different ownership is dedicated to the well, have the interests of all owners been consolidated by communitization, unitization, force-pooling, etc?

☐ Yes ☐ No If answer is "yes," type of consolidation _____RECEIVED
OIL CON. DIV.
DIST. 3

If answer is "no," list the owners and tract descriptions which have actually been consolidated. (Use reverse side of this form if necessary.) _____

No allowable will be assigned to the well until all interests have been consolidated (by communitization, unitization, forced-pooling, or otherwise) or until a non-standard unit, eliminating such interests, has been approved by the Division.



CERTIFICATION

I hereby certify that the information contained herein is true and complete to the best of my knowledge and belief.

Name

Thomas A. Dugan

Position

Petroleum Engineer

Company

Dugan Production Corp.

Date

8-11-83

EDGAR L. RISENHOOVER
NEW MEXICO
5979
REGISTERED PROFESSIONAL ENGINEER AND LAND SURVEYOR

Date Surveyed

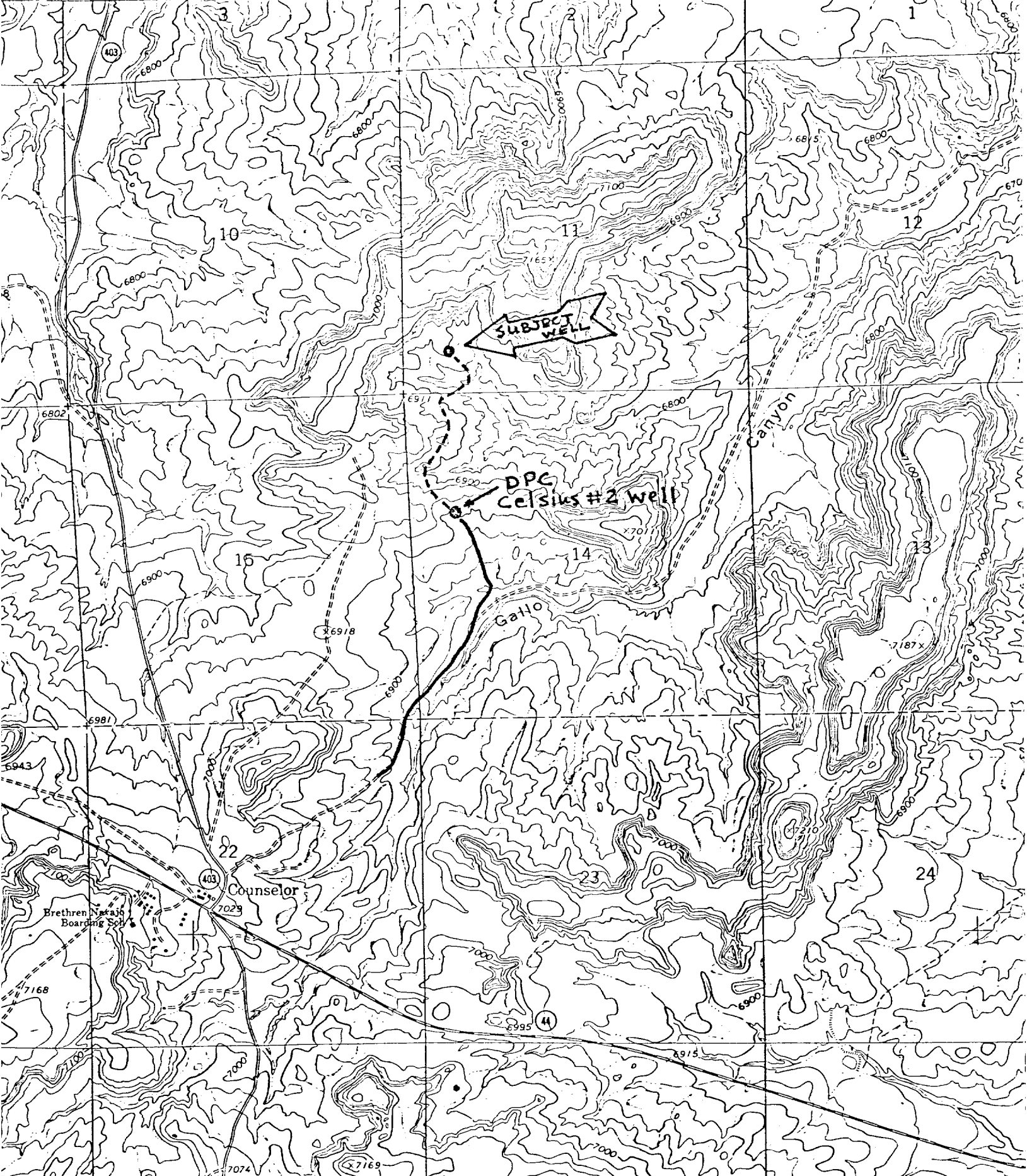
July 25, 1983

Registered Professional Engineer
and/or Land Surveyor

Edgar L. Risenhoover

Certificate No. 5979

Edgar L. Risenhoover, L.S.



Existing Road
- Access Road

DUGAN PRODUCTION CORP.
Fahrenheit #1
Exhibit E