

UNITED STATES
DEPARTMENT OF THE INTERIOR
GEOLOGICAL SURVEY

30-039-23390

APPLICATION FOR PERMIT TO DRILL, DEEPEN, OR PLUG BACK

1a. TYPE OF WORK

DRILL ☒DEEPEN ☐PLUG BACK ☐

b. TYPE OF WELL

OIL
WELL ☒GAS
WELL ☐

OTHER

SINGLE
ZONE ☐MULTIPLE
ZONE ☒

2. NAME OF OPERATOR

Chace Oil Company, Inc.

3. ADDRESS OF OPERATOR

313 Washington, S.E., Albuquerque, New Mexico 87108

4. LOCATION OF WELL (Report location clearly and in accordance with any State requirements.)*

At surface

Unit 'B' - 380' FNL + 1650' FNL

At proposed prod. zone

14. DISTANCE IN MILES AND DIRECTION FROM NEAREST TOWN OR POST OFFICE AND MANAGEMENT

15 miles W-SW of Lindrith, New Mexico

15. DISTANCE FROM PROPOSED* 380' Lease Line
LOCATION TO NEAREST
PROPERTY OR LEASE LINE, FT.
(Also to nearest drlg. unit line, if any)

330' Unit Line

18. DISTANCE FROM PROPOSED LOCATION*
TO NEAREST WELL, DRILLING, COMPLETED,
OR APPLIED FOR, ON THIS LEASE, FT.

1320'

16. NO. OF ACRES IN LEASE

2560

17. NO. OF ACRES ASSIGNED
TO THIS WELL

40

21. ELEVATIONS (Show whether DF, RT, GR, etc.)

7248' GR

DRILLING OPERATIONS AUTHORIZED ARE
SUBJECT TO COMPLIANCE WITH ATTACHED

22. APPROX. DATE WORK WILL START*

4/11/84

23. PROPOSED CASING AND CEMENTING PROGRAM

This action is subject to administrative
appeal pursuant to 30 CFR 290.

SIZE OF HOLE	SIZE OF CASING	WEIGHT PER FOOT	SETTING DEPTH	QUANTITY OF CEMENT
12 1/4"	8 5/8"	24# (J-55)	225'	225 SXS (266 CF) Class B cement
7 7/8"	4 1/2"	11.6# (N-80)	7616'	1st stage: 750 SXS (1073 CF) 50/50 pozmix 2nd stage: 505 SXS (1177 CF) 65/35 pozmix, 12% gel 40 SXS (47 CF) Class B cement

Drill 230' of 12 1/4" surface hole. Set 225' of 8 5/8" casing. Cement to surface with 225 SXS (266 CF) cement. Use an oil base mud (15% oil) and Schaeffer 5000# standard doublegate hydraulic BOP. Drill 7 7/8" hole to 7616' to test Dakota formation.

Wasatch formation on surface. Estimated Tops: Ojo - 2642'; Pictured Cliffs - 3092'; Chacra - 3431'; Cliff House - 4626'; Point Lookout - 5148'; Gallup - 6234'; Tocito - 6895'; Greenhorn - 7196'; Dakota 'A' - 7282'; Dakota 'D' - 7422'; Burro Canyon - 7516'.

D. V. Tool at 3030'. Float Collar at 7476'.

RECEIVED

MAR 20 1984

IN ABOVE SPACE DESCRIBE PROPOSED PROGRAM: If proposal is to deepen or plug back, give data on present productive zone and proposed new productive zone. If proposal is to drill or deepen directionally, give pertinent data on subsurface locations and measured and true vertical depths. Give blowout preventer program, if any.

24.

SIGNED



TITLE

Landman

DATE

3-1-84

(This space for Federal or State office use)

PERMIT NO.

APPROVAL DATE

APPROVED BY

TITLE

CONDITIONS OF APPROVAL, IF ANY:

APPROVED

AS AMENDED

DATE

MAR 15 1984

AREA MANAGER
FARMINGTON RESOURCE AREA

*See Instructions On Reverse Side

NMOCC

OIL CONSERVATION DIVISION

STATE OF NEW MEXICO
ENERGY AND MINERALS DEPARTMENTP. O. BOX 2088
SANTA FE, NEW MEXICO 87507Form C-102
Revised 10-1-7

All distances must be from the outer boundaries of the Section.

Operator CHACE OIL COMPANY, INC.			Lease 47-JV		Well No. 8
Init Letter B	Section 11	Township 23 NORTH	Range 4 WEST	County RIO ARriba	

Actual Footage Location of Well:

380	feet from the	NORTH	line and	1650	feet from the	EAST	line
Ground Level Elev. 7248	Producing Formation Gallup - Dakota		Pool S. Lindi. th Gallup - Dakota	Dedicated Acreage: 4.0		Acres:	

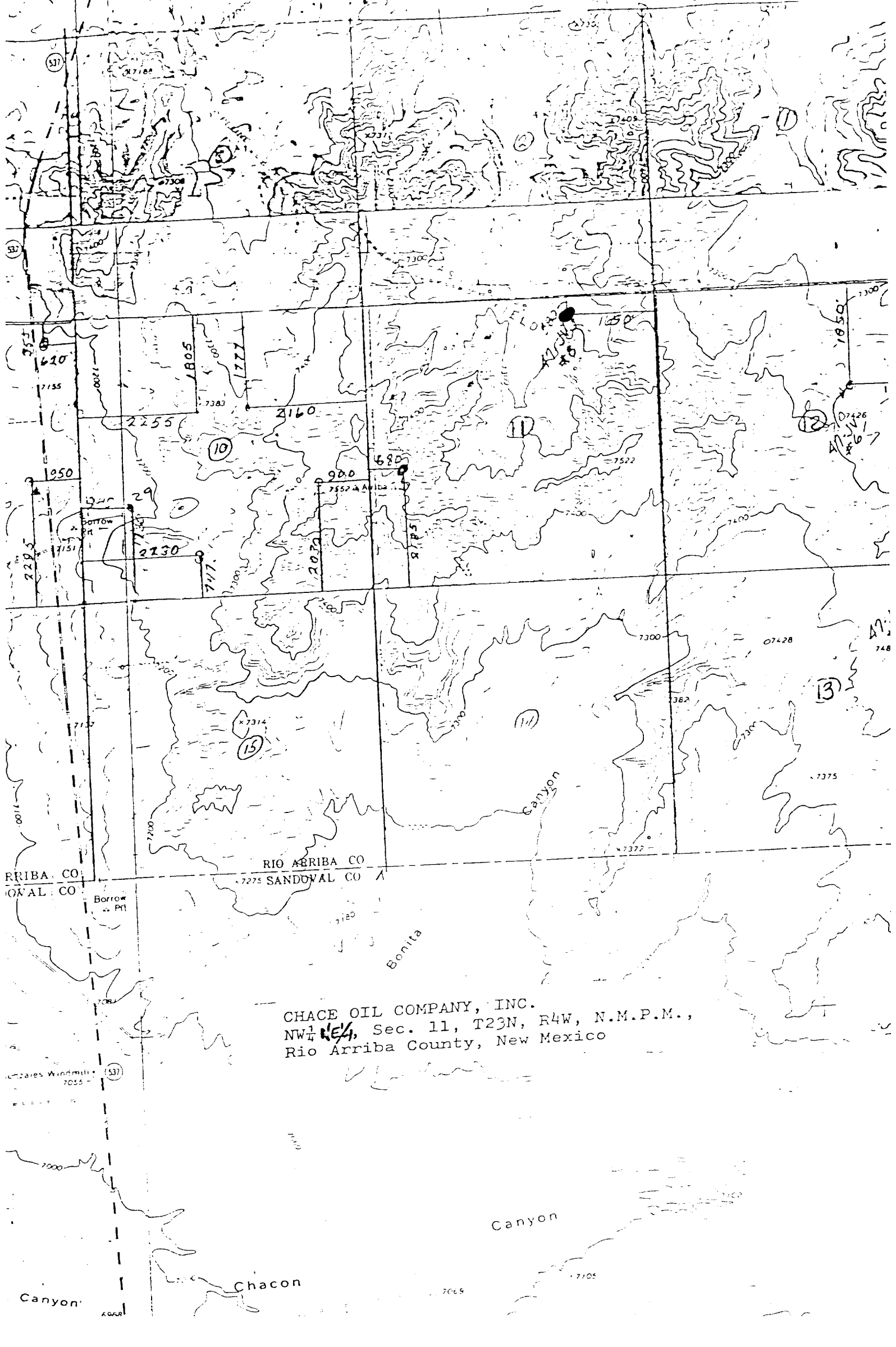
1. Outline the acreage dedicated to the subject well by colored pencil or hatchure marks on the plat below.
2. If more than one lease is dedicated to the well, outline each and identify the ownership thereof (both as to working interest and royalty).
3. If more than one lease of different ownership is dedicated to the well, have the interests of all owners been consolidated by communitization, unitization, force-pooling, etc?

☐ Yes ☐ No If answer is "yes," type of consolidation _____

If answer is "no," list the owners and tract descriptions which have actually been consolidated. (Use reverse side of this form if necessary.) _____

No allowable will be assigned to the well until all interests have been consolidated (by communitization, unitization, forced-pooling, or otherwise) or until a non-standard unit, eliminating such interests, has been approved by the Division

		CERTIFICATION	
		<p>I hereby certify that the information contained herein is true and complete to the best of my knowledge and belief.</p>	
		Name	<i>Loss E. L. L.</i>
		Position	<i>Landman</i>
		Company	<i>Chace Oil</i>
		Date	<i>3-1-84</i>
		<p>I hereby certify that the well location shown on this plat was plotted from field notes of <i>Michael Daly</i>, and that the same are true and correct to the best of my knowledge and belief.</p>	
		Date Surveyed	
		<p>August 22, 1983</p>	
		Registered Professional Engineer and/or Land Surveyor	
		<p>Michael Daly</p>	
		Certificate No.	



CHACE OIL COMPANY, INC.
NW 1/4 Sec. 11, T23N, R4W, N.M.P.M.,
Rio Arriba County, New Mexico