

UNITED STATES
DEPARTMENT OF THE INTERIOR
GEOLOGICAL SURVEY

APPLICATION FOR PERMIT TO DRILL, DEEPEN, OR PLUG BACK

1a. TYPE OF WORK

DRILL ☒DEEPEN ☐PLUG BACK ☐

b. TYPE OF WELL

OIL
WELL ☐GAS
WELL ☐

OTHER Co-mingled

SINGLE
ZONE ☐MULTIPLE
ZONE ☐

2. NAME OF OPERATOR

W.B. Martin & Associates, Inc.

3. ADDRESS OF OPERATOR

2110 N Sullivan, Farmington, NM 87401

4. LOCATION OF WELL (Report location clearly and in accordance with any State requirements.)

At surface

990' FSL and 1650 FEL

At proposed prod. zone

14. DISTANCE IN MILES AND DIRECTION FROM NEAREST TOWN OR POST OFFICE

14 miles NW of Cuba, NM

15. DISTANCE FROM PROPOSED*

LOCATION TO NEAREST
PROPERTY OR LEASE LINE, FT.
(Also to nearest drilg. unit line, if any)

990

16. NO. OF ACRES IN LEASE

+ 1280

18. DISTANCE FROM PROPOSED LOCATION*

TO NEAREST WELL, DRILLING, COMPLETED,
OR APPLIED FOR, ON THIS LEASE, FT.

120'

19. PROPOSED DEPTH

7088'

17. NO. OF ACRES ASSIGNED
TO THIS WELL

16040

20. ROTARY OR CABLE TOOLS

Rotary

21. ELEVATIONS (Show whether DF, RT, GR, etc.)

7089' GR

DRILLING OPERATIONS AUTHORIZED ARE
SUBJECT TO COMPLIANCE WITH ATTACHED

22. APPROX. DATE WORK WILL START*

Dependant Upon Approval

23. PROPOSED CASING AND CEMENTING PROGRAM

This action is subject to administrative
appeal pursuant to 30 CFR 290.

SIZE OF HOLE	SIZE OF CASING	WEIGHT PER FOOT	SETTING DEPTH	QUANTITY OF CEMENT
12 1/2	9 5/8	32	+ 250	206.50ft ³ (175sxs)
8 3/4	7	23	+ 4987	874.0ft ³ (520sxs)
6 1/2	4 1/2	11.6	+ 7088	262.0ft ³ (175sxs)

Proposed Program:

1. Drill 12 1/2" hole to 250'. Run and set 250' 9 5/8 casing. Circulate cement to surface. WOC 12hrs.
2. Install and pressure test BOP to 1000psi.
3. Drill 8 3/4 hole to 7088' with low solids/low water loss mud run and set 7" casing. WOC
4. Drill 6 1/2 hole to 7088' with Air (30%N2). Run and set 4 1/2 casing. WOCT

IN ABOVE SPACE DESCRIBE PROPOSED PROGRAM: If proposal is to deepen or plug back, give data on present productive zone and proposed new productive zone. If proposal is to drill or deepen directionally, give pertinent data on subsurface locations and measured and true vertical depths. Give blowout preventer program, if any.

24.

SIGNED

W.B. Martin

TITLE

Operator

(This space for Federal or State office use)

PERMIT NO.

APPROVAL DATE

APPROVED BY

TITLE

CONDITIONS OF APPROVAL, IF ANY:

RECEIVED
APR 27 1984OIL CON. DIV.
DIST. 3 NMOC -

APPROVED

AS AMENDED

APR 25 1984

AREA MANAGER
FARMINGTON RESOURCE AREA

OIL CONSERVATION DIVISION

P. O. BOX 2088

SANTA FE, NEW MEXICO 87501

Form C-107
Revised 10-1-78STATE OF NEW MEXICO
OIL AND MINERALS DEPARTMENT

All distances must be from the outer boundaries of the Section.

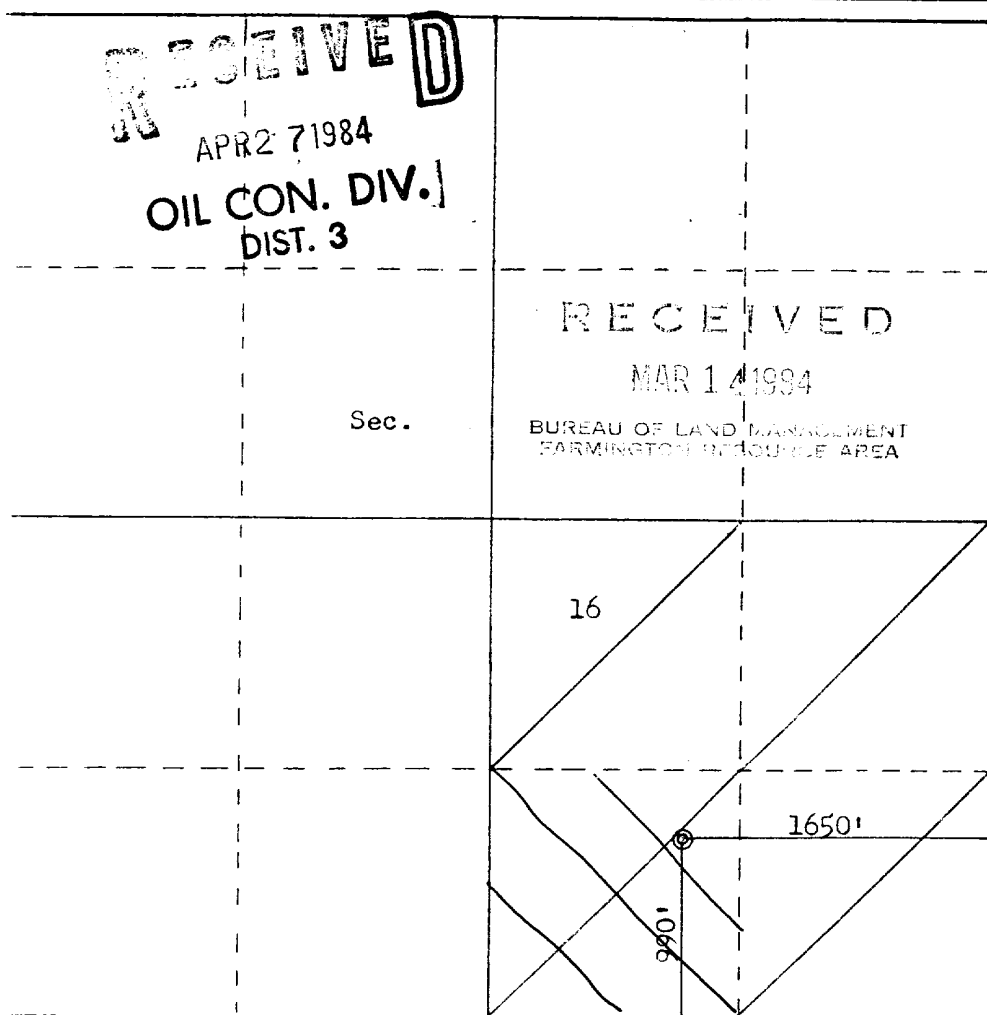
Operator W. B. MARTIN & ASSOCIATES			Lease MARTIN-WHITAKER		Well No. 34
Unit Letter 0	Section 16	Township 23N	Range 4W	County Rio Arriba	
Actual Footage Location of Well: 990 feet from the South line and 1650 feet from the East line Ground Level Elev.: 7089 Producing Formation Gallup - DAKOTA Pool W. H. CAT S. Lind. Dedicated Acreage: 160 40 Acres					

1. Outline the acreage dedicated to the subject well by colored pencil or hachure marks on the plat below.
2. If more than one lease is dedicated to the well, outline each and identify the ownership thereof (both as to working interest and royalty).
3. If more than one lease of different ownership is dedicated to the well, have the interests of all owners been consolidated by communitization, unitization, force-pooling, etc?

☐ Yes ☐ No If answer is "yes," type of consolidation _____

If answer is "no," list the owners and tract descriptions which have actually been consolidated. (Use reverse side of this form if necessary.) _____

No allowable will be assigned to the well until all interests have been consolidated (by communitization, unitization, forced-pooling, or otherwise) or until a non-standard unit, eliminating such interests, has been approved by the Commission.



Scale: 1"=1000'

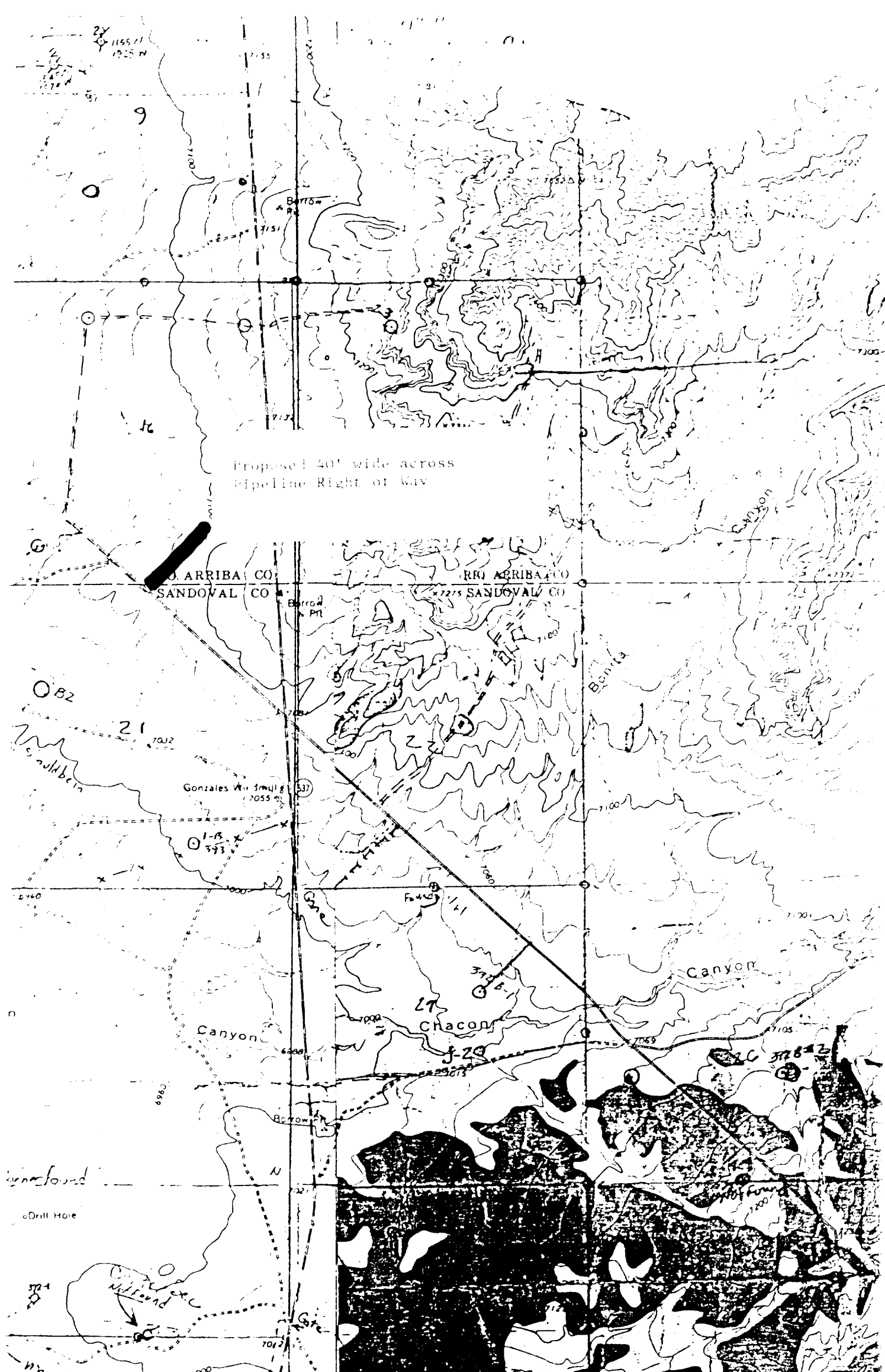
CERTIFICATION

I hereby certify that the information contained herein is true and complete to the best of my knowledge and belief.

Name	<i>W. B. Martin Jr.</i>
Position	<i>President</i>
Company	<i>W. B. Martin & Associates</i>
Date	<i>2/24/84</i>

I hereby certify that the well location shown on this plat was plotted from field notes of actual surveys made by me or under my supervision, and that the same is true and correct to the best of my knowledge and belief.

Date Surveyed	<i>February 22, 1984</i>
Registered Professional Engineer and Land Surveyor	<i>Fred B. Kerr Jr.</i>
Certificate No.	<i>3950</i>



Vicinity Map for
W. B. MARTIN & ASSOCIATES #34 MARTIN-WHITAKER
990'FSL 1650'FEL Sec. 16-T23N-R14W
RIO ARriba COUNTY, NEW MEXICO