

UNITED STATES
DEPARTMENT OF THE INTERIOR
BUREAU OF LAND MANAGEMENT

APPLICATION FOR PERMIT TO DRILL, DEEPEN, OR PLUG BACK

1a. TYPE OF WORK

DRILL ☒

DEEPEN ☐

PLUG BACK ☐

b. TYPE OF WELL

OIL
WELL ☒

GAS
WELL ☐

OTHER

SINGLE
ZONE ☐

MULTIPLE
ZONE ☒

2. NAME OF OPERATOR

Chace Oil Company

3. ADDRESS OF OPERATOR

313 Washington, S.E., Albuquerque, New Mexico 87108

4. LOCATION OF WELL (Report location clearly and in accordance with any State requirements.)

At surface

Unit 'O' 660' FSL and 1980' ~~PLUG BACK~~

At proposed prod. zone

14. DISTANCE IN MILES AND DIRECTION FROM NEAREST TOWN OR POST OFFICE*

17 miles W-SW of Lindrith, New Mexico

15. DISTANCE FROM PROPOSED* 660' from lease line
LOCATION TO NEAREST
PROPERTY OR LEASE LINE, FT.
(Also to nearest drlg. unit line, if any)

and unit line

16. NO. OF ACRES IN LEASE
1920

18. DISTANCE FROM PROPOSED LOCATION*
TO NEAREST WELL, DRILLING, COMPLETED,
OR APPLIED FOR, ON THIS LEASE, FT.

1125'

19. PROPOSED DEPTH
7250'

17. NO. OF ACRES ASSIGNED
TO THIS WELL
40

21. ELEVATIONS (Show whether DF, RT, GR, etc.)

7101' GR

DRILLING OPERATIONS AUTHORIZED ARE
SUBJECT TO COMPLIANCE WITH ATTACHED
"GENERAL REQUIREMENTS"

22. APPROX. DATE WORK WILL START*
9-14-84

23.

PROPOSED CASING AND CEMENTING PROGRAM

This action is subject to administrative
appeal pursuant to 30 CFR 290.

SIZE OF HOLE	SIZE OF CASING	WEIGHT PER FOOT	SETTING DEPTH
12 1/4"	8 5/8"	24#(J-55)	225'
7 7/8"	4 1/2"	11.6#(N-80)	7250'

QUANTITY OF CEMENT
225 SxS (405 CF) Class B Cement
1st stage: 750 SxS (1350 CF)
50/50 pozmix
2nd stage: 505 SxS (909 CF)
40/60 pozmix, 12% gel
40 SxS (72 CF) Class B Cement

Drill 230' of 12 1/4" surface hole. Set 225' of 8 5/8" casing. Cement to surface with 225 SxS (405 CF) cement. Use an oil base mud, (15% oil), and Schaeffer 5000# standard doublegate hydraulic BOP. Drill 7 7/8" hole to 7250' to test the Dakota Formation.

Estimated Tops:

Ojo Alamo 2285'
Picture Cliffs 2721'
Chacra 3074'
Cliff House 4237'

Pt. Lookout 4842'
Gallup 5516'
Tocito 6636'
Greenhorn 6830'

Dakota 'A' 6928'
Dakota 'D' 7050'
Burro Canyon 7150'

IN ABOVE SPACE DESCRIBE PROPOSED PROGRAM: If proposal is to deepen or plug back, give data on present productive zone and proposed new productive zone. If proposal is to drill or deepen directionally, give pertinent data on subsurface locations and measured and true vertical depths. Give blowout preventer program, if any.

24.

SIGNED

Monte Anderson

TITLE Geologist

(This space for Federal or State office use)

PERMIT NO.

APPROVAL DATE

APPROVED BY

CONDITIONS OF APPROVAL, IF ANY:

TITLE

APPROVED

7-19-84

AS AMENDED

SEP 10 1984

DATE

AREA MANAGER

FARMINGTON RESOURCE AREA

NMOCC

*See Instructions On Reverse Side

Title 18 U.S.C. Section 1001, makes it a crime for any person knowingly and willfully to make to any department or agency of the United States any false, fictitious or fraudulent statements or representations as to any matter within its jurisdiction.

All distances must be from the outer boundaries of the Section.

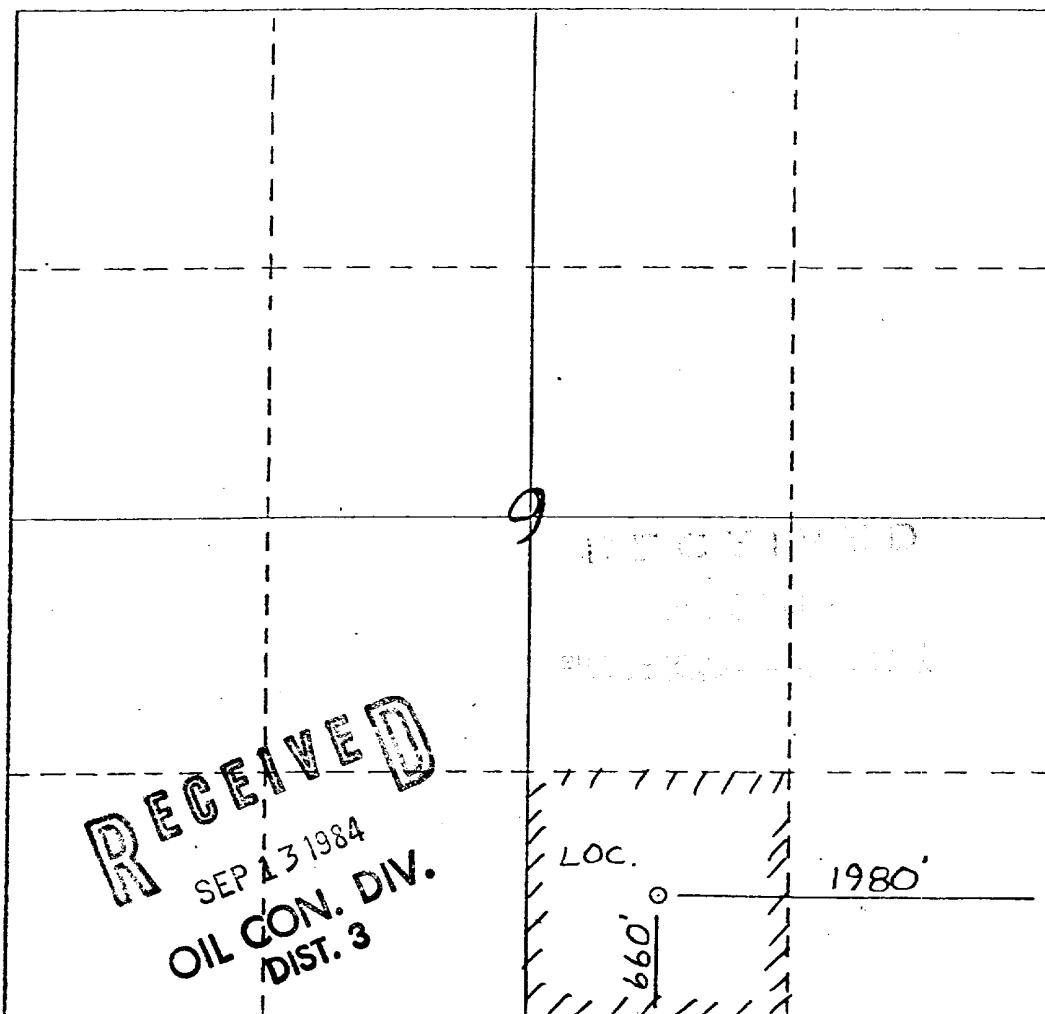
Operator CHACE OIL COMPANY		Lease JICARILLA		Well No. 71-39	
Unit Letter 0	Section 9	Township 23 NORTH	Range 4 WEST	County RIO ARRIBA	
Actual Footage Location of Well: 660 feet from the SOUTH line and 1980 feet from the EAST line					
Ground Level Elev. 7101	Producing Formation Gallup- Dakota		Pool S. Lindvith	Dedicated Acreage: 40 Acres	

1. Outline the acreage dedicated to the subject well by colored pencil or hatchure marks on the plat below.
2. If more than one lease is dedicated to the well, outline each and identify the ownership thereof (both as to working interest and royalty).
3. If more than one lease of different ownership is dedicated to the well, have the interests of all owners been consolidated by communitization, unitization, force-pooling, etc?

☐ Yes ☐ No If answer is "yes," type of consolidation _____

If answer is "no," list the owners and tract descriptions which have actually been consolidated. (Use reverse side of this form if necessary.) _____

No allowable will be assigned to the well until all interests have been consolidated (by communitization, unitization, forced-pooling, or otherwise) or until a non-standard unit, eliminating such interests, has been approved by the Division



CERTIFICATION

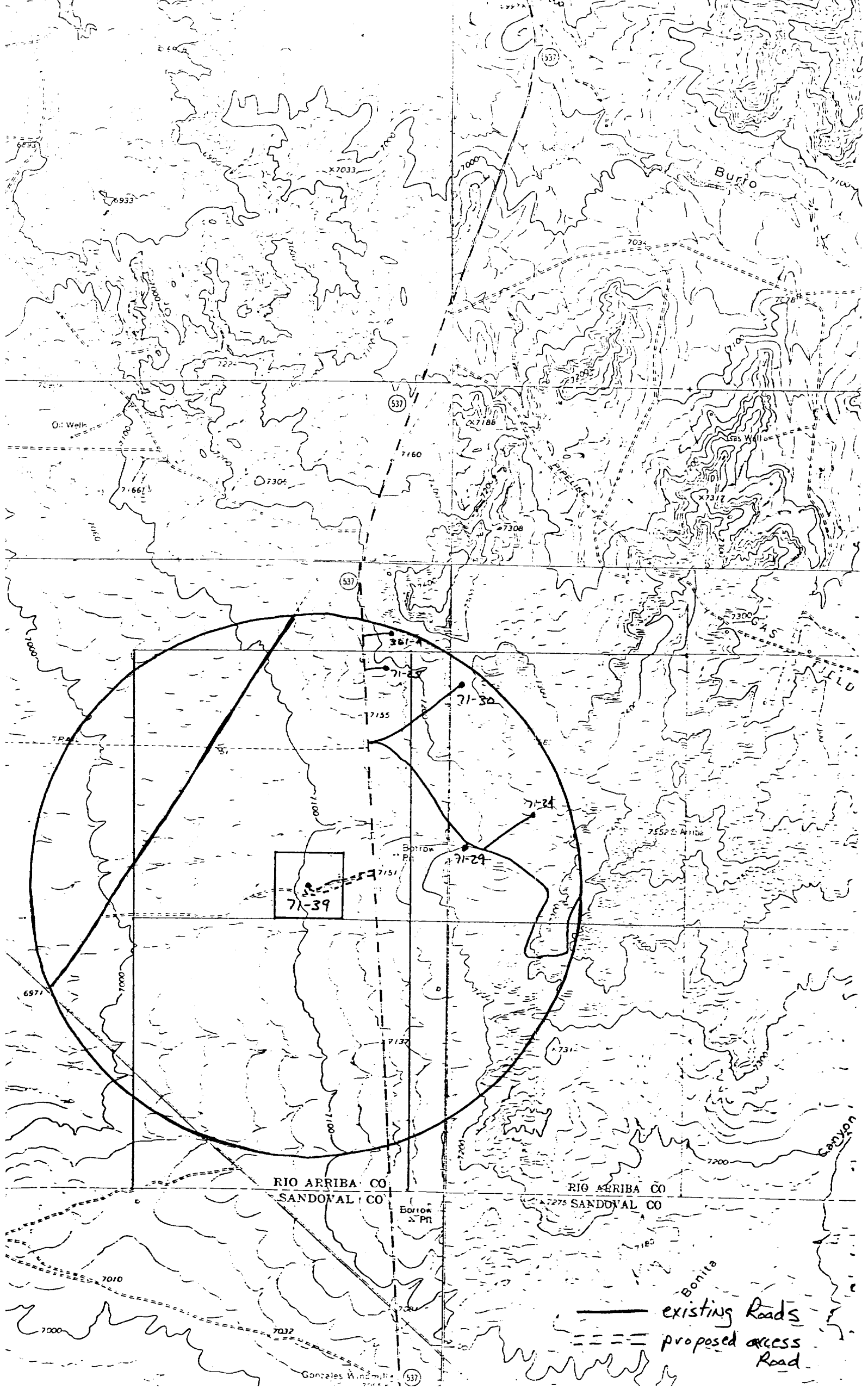
I hereby certify that the information contained herein is true and complete to the best of my knowledge and belief.

Name **Monte Anderson**
 Position **Geologist**
 Company **Chace Oil**
 Date **7-20-84**

I hereby certify that the well location shown on this plat was obtained from field notes of actual survey made by me or under my supervision, and that the same is true and correct to the best of my knowledge and belief.

Date Surveyed **6-29-84**
 Registered Professional Engineer and/or Land Surveyor

Neale C. Edwards
 Certificate No. **6857**



RIO ARRIBA CO
SANDOVAL CO

RIO ARRIBA CO
SANDOVAL CO

— existing Roads
=== proposed access Road