

UNITED STATES
DEPARTMENT OF THE INTERIOR
BUREAU OF LAND MANAGEMENT

APPLICATION FOR PERMIT TO DRILL, DEEPEN, OR PLUG BACK

1a. TYPE OF WORK

DRILL ☒

DEEPEN ☐

PLUG BACK ☐

b. TYPE OF WELL

OIL
WELL ☒

GAS
WELL ☐

OTHER

SINGLE
ZONE ☐

MULTIPLE
ZONE ☒

2. NAME OF OPERATOR

Chace Oil Company

3. ADDRESS OF OPERATOR

313 Washington, S.E., Albuquerque, N.M. 87108

4. LOCATION OF WELL (Report location clearly and in accordance with any State requirements.)*

At surface

Unit 'P' - 701' FSL & 855' FEL

At proposed prod. zone

14. DISTANCE IN MILES AND DIRECTION FROM NEAREST TOWN OR POST OFFICE*

17 miles W-SW of Lindrith, New Mexico

15. DISTANCE FROM PROPOSED 701' to lease line
LOCATION TO NEAREST
PROPERTY OR LEASE LINE, FT. 465' to unit line
(Also to nearest drlg. unit line, if any)

16. NO. OF ACRES IN LEASE
1920

17. NO. OF ACRES ASSIGNED
TO THIS WELL
40

18. DISTANCE FROM PROPOSED LOCATION*
TO NEAREST WELL, DRILLING, COMPLETED,
OR APPLIED FOR, ON THIS LEASE, FT.

1,519'

19. PROPOSED DEPTH
7355'

20. ROTARY OR CABLE TOOL
Rotary

21. ELEVATIONS (Show whether DF, RT, GR, etc.)
7140' GR

DRILLING OPERATIONS AUTHORIZED ARE
SUBJECT TO COMPLIANCE WITH ATTACHED

22. APPROX. DATE WORK WILL START*
8-15-84

23. PROPOSED CASING AND CEMENTING PROGRAM

This action is subject to administrative
appeal pursuant to 30 CFR 290.

SIZE OF HOLE	SIZE OF CASING	WEIGHT PER FOOT	SETTING DEPTH	QUANTITY OF CEMENT
12 1/4"	8 5/8"	24#(J-55)	225'	225 SxS (405 CF) Class B Cement
7 7/8"	4 1/2"	11.6#(N-80)	7355'	1st Stage: 750 SxS (1350 CF) 50/50 pozmix 2nd stage: 505 SxS (909 CF) 40/60 pozmix, 12% gel 40 SxS (72 CF) Class B Cement

Drill 230' of 12 1/4" surface hole. Set 225' of 8 5/8" casing. Cement to surface with 225 SxS (405 CF) cement. Use an oil base mud, (15% oil), and Schaeffer 5000# Standard doublegate hydraulic BOP. Drill 7 7/8" hole to 7355' to test the Dakota Formation.

Estimated Tops:

Ojo Alamo	2381'	Pt. Lookout	4921'	Dakota 'A'	7016'
Picture Cliffs	2805'	Gallup	5580'	Dakota 'D'	7138'
Chacra	3169'	Tocito	6594'	Burro Canyon	7254'
Cliff House	4333'	Greenhorn	6916'		

IN ABOVE SPACE DESCRIBE PROPOSED PROGRAM: If proposal is to deepen or plug back, give data on present productive zone and proposed new productive zone. If proposal is to drill or deepen directionally, give pertinent data on subsurface locations and measured and true vertical depths. Give blowout preventer program, if any.

24.

SIGNED Monte Anderson

TITLE Geologist

DATE 6-25-84

(This space for Federal or State office use)

PERMIT NO.

APPROVAL DATE

AS AMENDED

APPROVED BY

TITLE

DATE

CONDITIONS OF APPROVAL, IF ANY:

RECEIVED
SEP 12 1984
OIL CON. DIV.
DIST. 3

NMOCC

*See Instructions On Reverse Side

All distances must be from the outer boundaries of the Section.

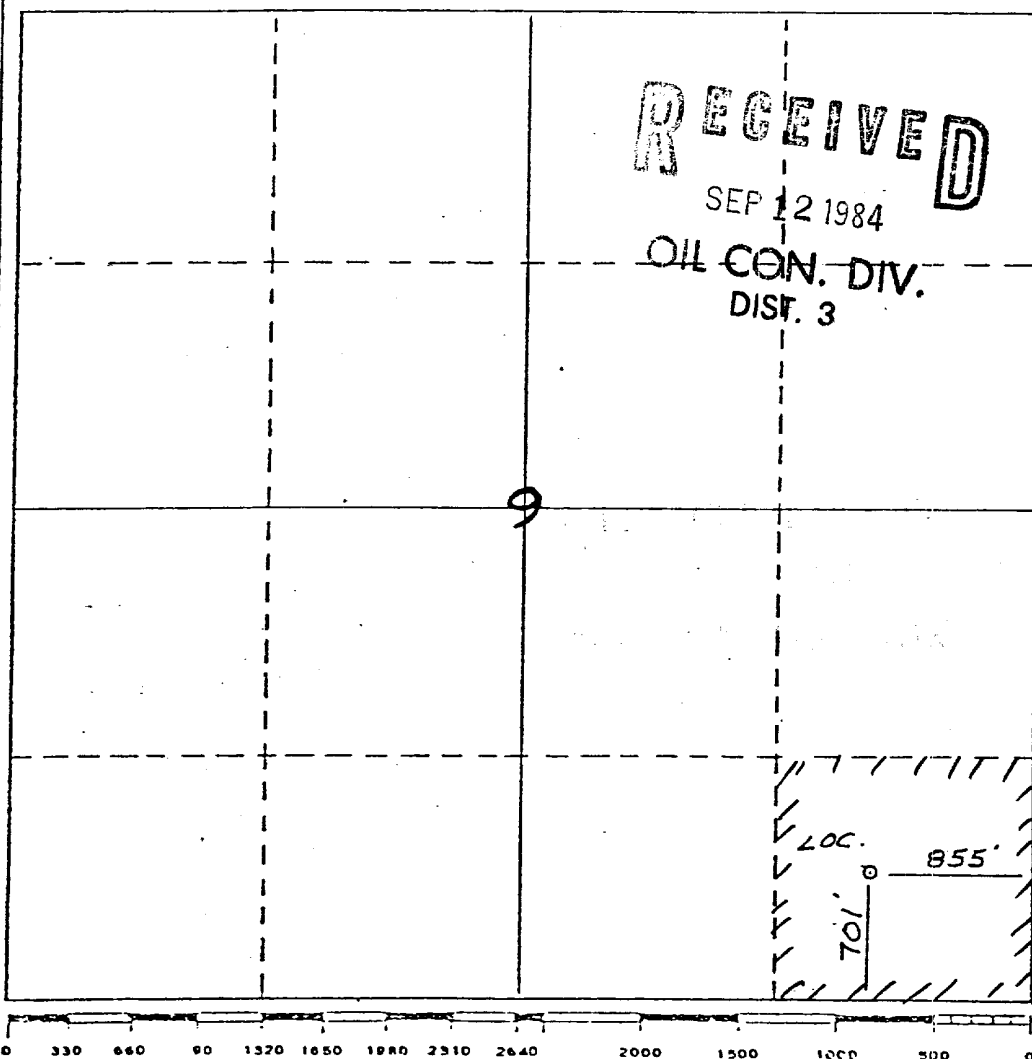
Operator CHACE OIL COMPANY			Lease JICARILLA 71		Well No. IP-33
Unit Letter P	Section 9	Township 23 NORTH	Range 4 WEST	County RIO ARRIBA	
Actual Footage Location of Well:					
701 feet from the SOUTH line and		855 feet from the EAST line			
Ground Level Elev. 7140	Producing Formation Gallup-Dakota	Pool S. Lindrith	Dedicated Acreage: 40 Acres		

1. Outline the acreage dedicated to the subject well by colored pencil or hachure marks on the plat below.
2. If more than one lease is dedicated to the well, outline each and identify the ownership thereof (both as to working interest and royalty).
3. If more than one lease of different ownership is dedicated to the well, have the interests of all owners been consolidated by communitization, unitization, force-pooling, etc?

☐ Yes ☐ No If answer is "yes," type of consolidation _____

If answer is "no," list the owners and tract descriptions which have actually been consolidated. (Use reverse side of this form if necessary.) _____

No allowable will be assigned to the well until all interests have been consolidated (by communitization, unitization, forced-pooling, or otherwise) or until a non-standard unit, eliminating such interests, has been approved by the Division



CERTIFICATION

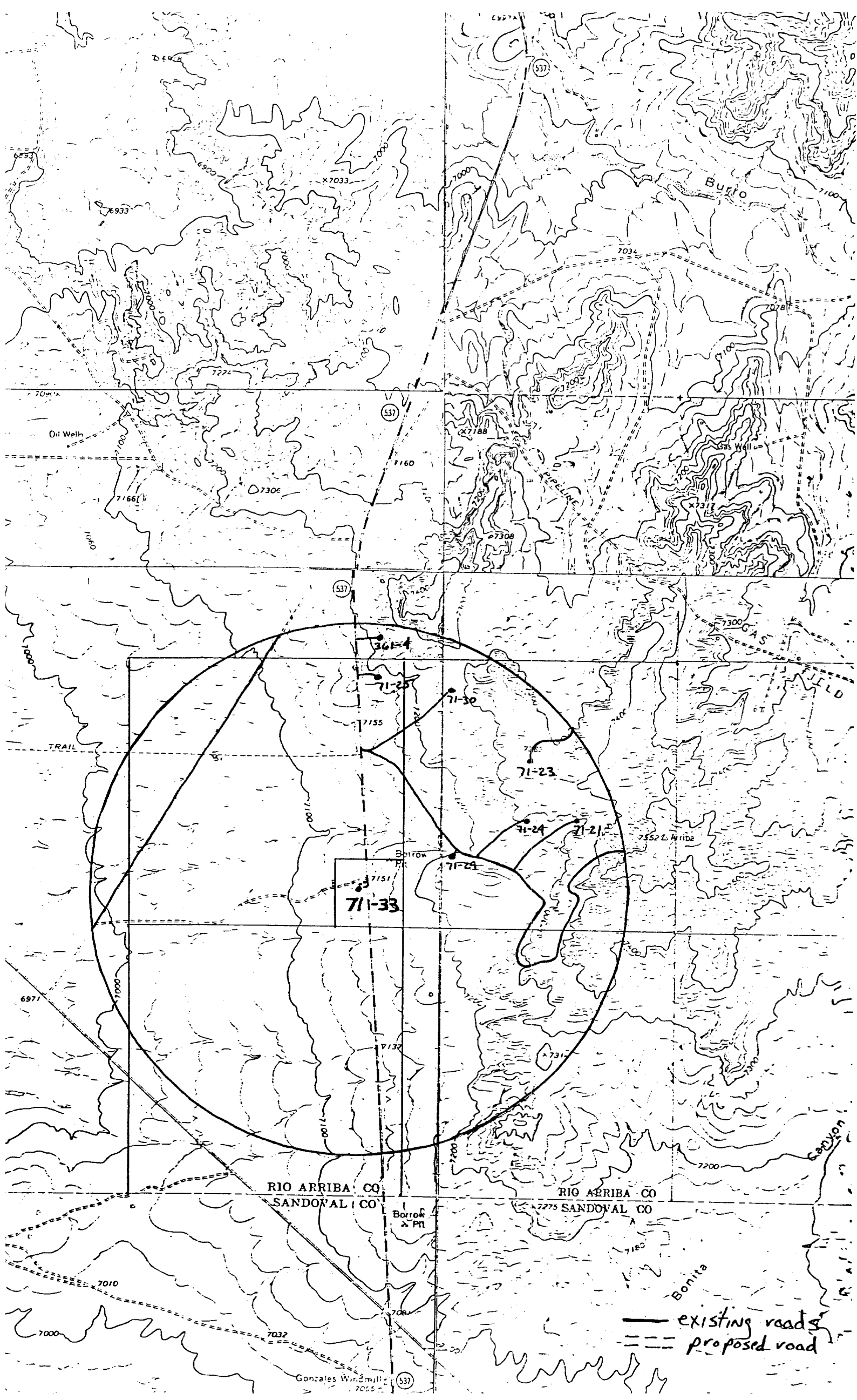
I hereby certify that the information contained herein is true and complete to the best of my knowledge and belief.

Name **Monte Anderson**
Position **Geologist**
Company **Chace Oil**
Date **7-20-84**

I hereby certify that the well location shown on this plat was plotted from field notes of actual surveys made by me or under my supervision, and that the same is true and correct to the best of my knowledge and belief.

Date Surveyed **6-21-84**
Registered Professional Engineer and/or Land Surveyor

Mark C. Edwards
Certificate No. **6857**



RIO ARRIBA CO
SANDOVAL CO

RIO ARRIBA CO
SANDOVAL CO

— existing roads
--- proposed road