

SUBMIT IN TRIPLICATE*
(Other instructions on reverse side)

Form approved.
Budget Bureau No. 1004-0136
Expires August 31, 1985

UNITED STATES
DEPARTMENT OF THE INTERIOR
BUREAU OF LAND MANAGEMENT

APPLICATION FOR PERMIT TO DRILL, DEEPEN, OR PLUG BACK

1A. TYPE OF WORK
DRILL DEEPEN PLUG BACK

B. TYPE OF WELL
OIL WELL (both GAS WELL OTHER
SINGLE ZONE MULTIPLE ZONE

2. NAME OF OPERATOR
Amoco Production Company

3. ADDRESS OF OPERATOR
501 Airport Drive, Farmington, New Mexico 87401

4. LOCATION OF WELL (Report location clearly and in accordance with any State requirements.)
At surface 790' FNL X 990' FWL
At proposed prod. zone 2262 FEL
Same

14. DISTANCE IN MILES AND DIRECTION FROM NEAREST TOWN OR POST OFFICE AND NEAREST RESERVOIR AREA
20 miles northwest of Cuba, NM

10. DISTANCE FROM PROPOSED LOCATION TO NEAREST PROPERTY OR LEASE LINE, FT. (Also to nearest drig. unit line, if any)
790'

18. DISTANCE FROM PROPOSED LOCATION TO NEAREST WELL, DRILLING, COMPLETED, OR APPLIED FOR, ON THIS LEASE, FT.
3000' SE

21. ELEVATIONS (Show whether DF, RT, GR, etc.)
7310' GR

23. DRILLING OPERATIONS AUTHORIZED ARE SUBJECT TO COMPLIANCE WITH ATTACHED "GENERAL REQUIREMENTS" PROPOSED CASING AND CEMENTING PROGRAM

SIZE OF HOLE	SIZE OF CASING	WEIGHT PER FOOT	SETTING DEPTH
12 - 1/4"	8 - 5/8"	24#, K-55	300'
7 - 7/8"	5 - 1/2"	15.5#, K-55	7680'

5. LEASE DESIGNATION AND SERIAL NO.
Jicarilla Tribal 396

6. IF INDIAN, ALLOTTEE OR TRIBE NAME
Jicarilla Apache

7. UNIT AGREEMENT NAME

8. FARM OR LEASE NAME
Jicarilla Tribal 396

9. WELL NO.
12

10. FIELD AND POOL, OR WILDCAT
West Lindrith GP-DK

11. SEC., T., R., M., OR BLK. AND SURVEY OR AREA
NW/NE Sec. 7, B
T23N, R3W

12. COUNTY OR PARISH
Rio Arriba

13. STATE
NM

16. NO. OF ACRES IN LEASE
2071

19. PROPOSED DEPTH
7680'

17. NO. OF ACRES ASSIGNED TO THIS WELL
160

20. ROTARY OR CABLE TOOLS
Rotary

22. APPROX. DATE WORK WILL START*
As soon as permitted

24. IN ABOVE SPACE DESCRIBE PROPOSED PROGRAM: If proposal is to deepen or plug back, give data on present productive zone and proposed new productive zone. If proposal is to drill or deepen directionally, give pertinent data on subsurface locations and measured and true vertical depths. Give blowout preventer program, if any.

Amoco proposes to drill the above well to further develop the West Lindrith GP-DK reservoir. The well will be drilled to the surface casing point using native mud. The well will then be drilled to TD with a low solids nondispersed mud system. Completion design will be based on open hole logs. Copy of all logs will be filed upon completion. Amoco's standard blowout prevention will be employed; see attached drawing for blowout preventer design. Upon completion the well site will be cleaned and the reserve pit filled and leveled. The gas from this well is undedicated at this time.

SIGNED Original signed By
B. D. Shaw
TITLE Adm. Supervisor

PERMIT NO. (This space for Federal or State use)
APPROVAL DATE

APPROVED BY
CONDITIONS OF APPROVAL, IF ANY:

RECEIVED
SEP 24 1984
OIL CON. DIV.
DIST. 3

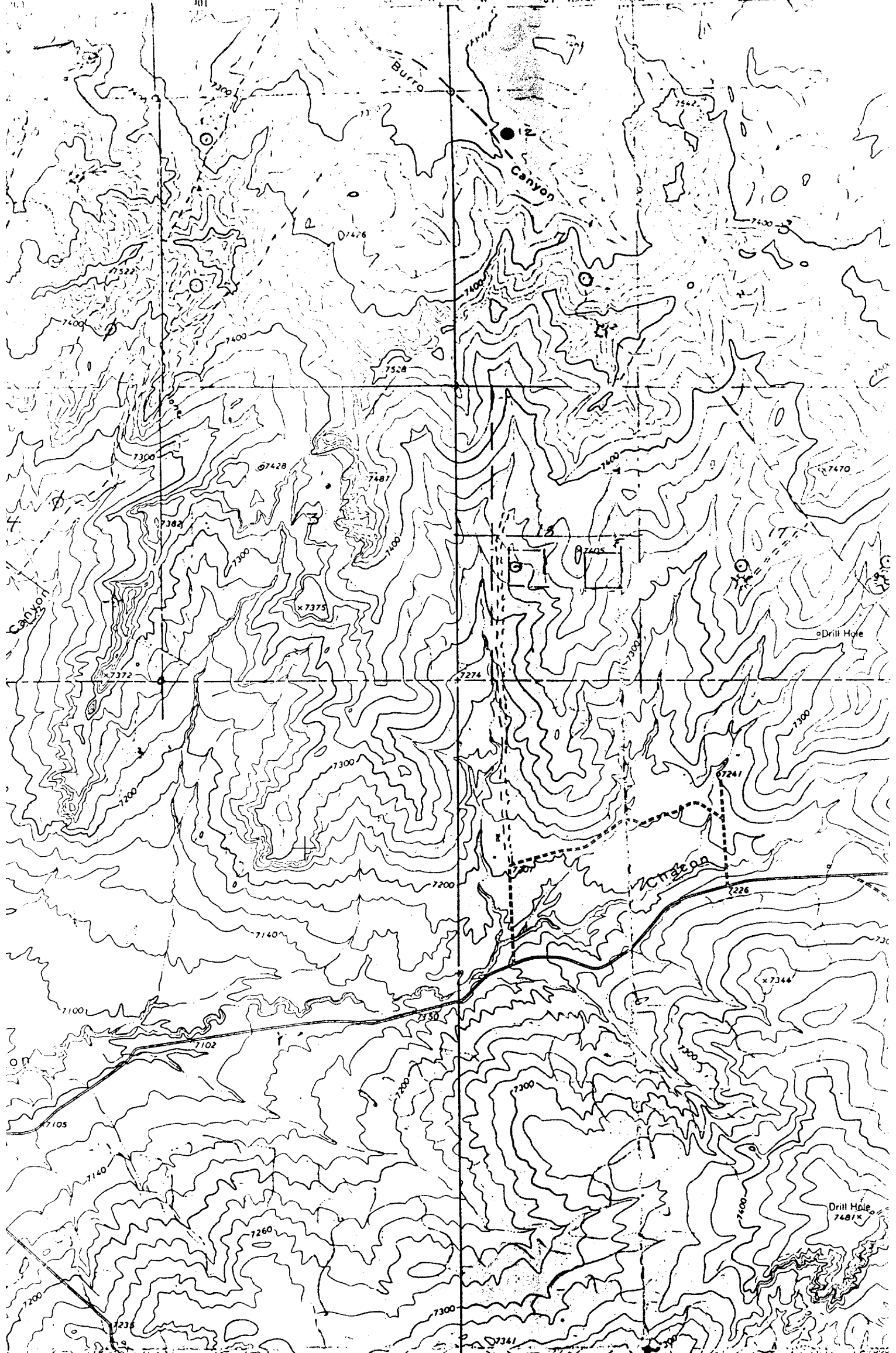
8/24/84
APPROVED
AS AMENDED
DATE SEP 20 1984
AREA MANAGER
FARMINGTON RESOURCE AREA

*See Instructions On Reverse Side

Title 18 U.S.C. Section 1001, makes it a crime for any person knowingly and willfully to make to any department or agency of the United States any false, fictitious or fraudulent statements or representations as to any matter within its jurisdiction.

Scale: 1"=1000'

Certificate No. 4222
2050



Vicinity Map for
AMOCO PRODUCTION CO. #12 JICARILLA CONTRACT 396
790'FNL 990'FWL Sec. 7-T23N-R3W
RIO ARRIBA COUNTY, NEW MEXICO