

UNITED STATES
DEPARTMENT OF THE INTERIOR
GEOLOGICAL SURVEY

APPLICATION FOR PERMIT TO DRILL, DEEPEN, OR PLUG BACK

1a. TYPE OF WORK

DRILL ☒DEEPEN ☐PLUG BACK ☐

b. TYPE OF WELL

OIL
WELL ☒GAS
WELL ☐

OTHER

SINGLE
ZONE ☐MULTIPLE
ZONE ☒

2. NAME OF OPERATOR

Chace Oil Co., Inc.

3. ADDRESS OF OPERATOR

313 Washington S.E., Albuquerque, New Mexico 87108

4. LOCATION OF WELL (Report location clearly and in accordance with any State requirements.)*

At surface

Unit 'L', 680' FWL & 2185' FSL

At proposed prod. zone

14. DISTANCE IN MILES AND DIRECTION FROM NEAREST TOWN OR POST OFFICE*

17 miles W-SW of Lindrith, New Mexico

15. DISTANCE FROM PROPOSED* 680' from lease line
LOCATION TO NEAREST
PROPERTY OR LEASE LINE, FT. 680' from
(Also to nearest drlg. unit line, if any) unit line

16. NO. OF ACRES IN LEASE

2560

17. NO. OF ACRES ASSIGNED
TO THIS WELL

40

18. DISTANCE FROM PROPOSED LOCATION*
TO NEAREST WELL, DRILLING, COMPLETED,
OR APPLIED FOR, ON THIS LEASE, FT.

1600'

19. PROPOSED DEPTH

7700'

20. ROTARY OR CABLE TOOLS

Rotary

21. ELEVATIONS (Show whether DF, RT, GR, etc.)

7508' GR

DRILLING OPERATIONS AUTHORIZED ARE
SUBJECT TO COMPLIANCE WITH ATTACHED

22. APPROX. DATE WORK WILL START*

10-15-84

23. GENERAL REQUIREMENTS
PROPOSED CASING AND CEMENTING PROGRAMThis action is subject to administrative
appeal pursuant to 30 CFR 290.1

SIZE OF HOLE	SIZE OF CASING	WEIGHT PER FOOT	SETTING DEPTH	QUANTITY OF CEMENT
12 1/4"	8 5/8"	24#(J-55)	225'	225 SxS (405 CF) Class B cement
7 7/8"	4 1/2"	11.6#(N-80)	7700'	1st Stage: 750 SxS (1350 CF) 50/50 pozmix 2nd Stage: 505 SxS (909 CF) 40/60 pozmix, 12% gel 40 SxS (72 CF) Class B cement

Drill 230' of 12 1/4" surface hole, set 225' of 8 5/8" casing. Cement to surface with 225 SxS (405 CF) cement. Use an oil base mud (15% oil), and Schaeffer 5000# standard doublegate hydraulic BOP. Drill 7 7/8" hole to 7700' to test Dakota Formation.

Logging Program: Run Dil, FDC-CNL and Cyberlook from TD to surface casing.

Wasatch Formation at surface. Estimated tops:

Ojo	2781'	Gallup	5916'
Picture Cliffs	3191'	Tocito	7031'
Chacra	3551'	Greenhorn	7346'
Cliff House	4735'	Dakota "A"	7436'
Point Lookout	5261'	Dakota "D"	7581'
		Burro Canyon	7686'

RECEIVED
SEP 19 1984
BUREAU OF LAND MANAGEMENT
FARMINGTON RESOURCE AREAD.V. Tool at 3390'
Float Collar at 7660'

IN ABOVE SPACE DESCRIBE PROPOSED PROGRAM: If proposal is to deepen or plug back, give data on present productive zone and proposed new productive zone. If proposal is to drill or deepen directionally, give pertinent data on subsurface locations and measured and true vertical depths. Give blowout preventer program, if any.

24.

SIGNED

Monte Anderson

Geologist

(This space for Federal or State of use)

PERMIT NO.

SEP 28 1984

APPROVAL DATE

APPROVED BY

CONDITIONS OF APPROVAL, IF ANY:

OIL CON. DIV.
DIST. 3

*See Instructions On Reverse Side

NMCCG

AS AMENDED
DATE
SEP 26 1984

/s/ J. Stan McKee

AREA MANAGER
FARMINGTON RESOURCE AREA

All distances must be from the outer boundaries of the section.

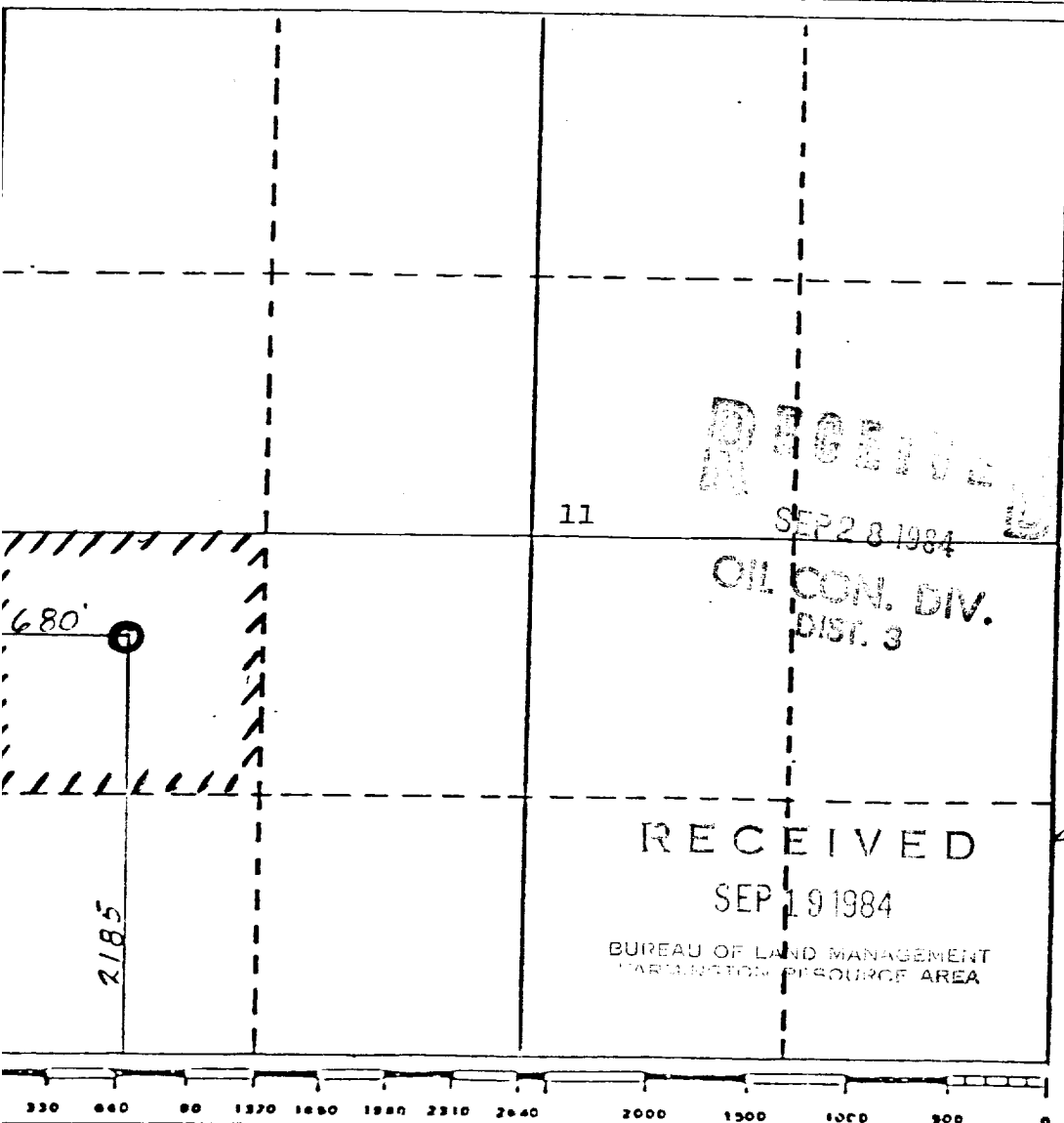
Operator CHACE OIL COMPANY, INC.			Lease Jicarilla Tribal Contract #47		Well No. 12
Unit Letter L	Section 11	Township 23 NORTH	Range 4 WEST	County RIO ARriba	
Actual Footage Location of Well: 2185 feet from the SOUTH line and 680 feet from the WEST line					
Ground Level Elev. 7508	Producing Formation Gallup-Dakota		Pool South Lindrith, Gallup-Dakota	Dedicated Acreage: 40	

1. Outline the acreage dedicated to the subject well by colored pencil or hatchure marks on the plat below.
2. If more than one lease is dedicated to the well, outline each and identify the ownership thereof (both as to working interest and royalty).
3. If more than one lease of different ownership is dedicated to the well, have the interests of all owners been consolidated by communitization, unitization, force-pooling, etc?

☐ Yes ☐ No If answer is "yes," type of consolidation _____

If answer is "no," list the owners and tract descriptions which have actually been consolidated. (Use reverse side of this form if necessary.) _____

No allowable will be assigned to the well until all interests have been consolidated (by communitization, unitization, forced-pooling, or otherwise) or until a non-standard unit, eliminating such interests, has been approved by the Division



CERTIFICATION

I hereby certify that the information contained herein is true and complete to the best of my knowledge and belief.

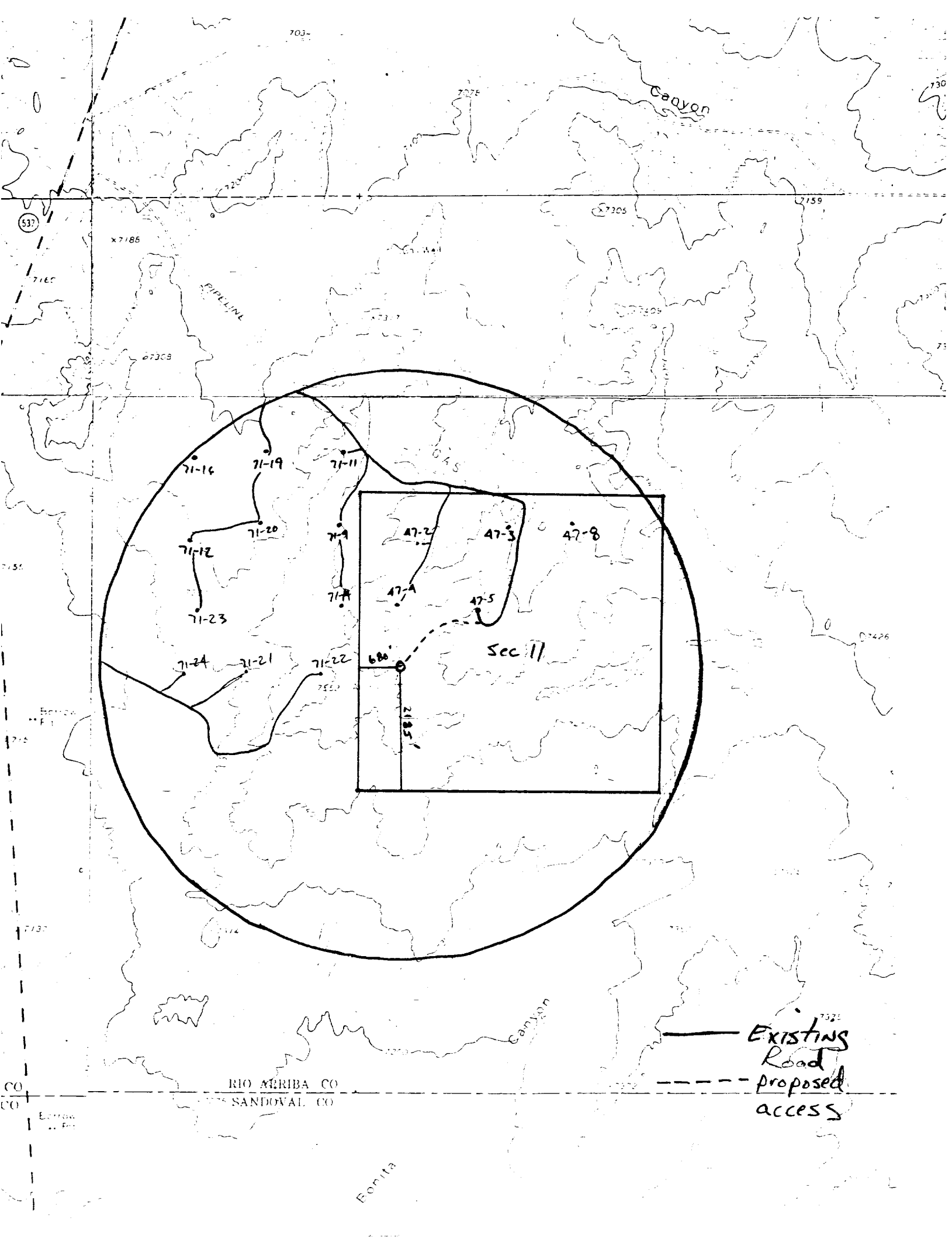
Name
Monte Anderson
Position
Geologist
Company
Chace Oil Company, Inc.
Date
7-27-84

I hereby certify that the well location shown on this plat was plotted from field notes or surveys made by me or under my supervision, and that the same is true and correct to the best of my knowledge and belief.

Date Surveyed
November 29, 1983
Registered Professional Engineer
and/or Land Surveyor

Michael Daly

Certificate No.
5992



703-

7075

Canyon

730

537

x7185

x7305

7159

PIPELINE

x7317

x7305

67308

71-16

71-19

71-11

71-12

71-20

71-9

47-2

47-3

47-8

71-23

71-11

47-4

47-5

71-24

71-21

71-22

686'

2185'

Sec 11

67426

Bridge
F1

715

7137

Canyon

7325

CO
CO

RIO ARRIBA CO
SANDOVAL CO

Bridge
F1

Enlita

— Existing Road
--- Proposed access