

UNITED STATES  
DEPARTMENT OF THE INTERIOR  
BUREAU OF LAND MANAGEMENT

APPLICATION FOR PERMIT TO DRILL, DEEPEN, OR PLUG BACK

1a. TYPE OF WORK  
DRILL ☒ DEEPEN ☐ PLUG BACK ☐

b. TYPE OF WELL  
OIL WELL ☐ GAS WELL ☒ OTHER ☐ SINGLE ZONE ☒ MULTIPLE ZONE ☐

2. NAME OF OPERATOR  
SHERMAN F. WAGENSELLER

3. ADDRESS OF OPERATOR  
Brana Corporation  
1223 First Interstate Bldg, 320 Gold A. SW, Albuquerque, NM, 87102

4. LOCATION OF WELL (Report location clearly and in accordance with any State requirements.)  
At surface 790 fsl & 790 fwl  
At proposed prod. zone SAME

14. DISTANCE IN MILES AND DIRECTION FROM NEAREST TOWN OR POST OFFICE\*  
5 miles SW of Lindrith, New Mexico

15. DISTANCE FROM PROPOSED\*  
LOCATION TO NEAREST  
PROPERTY OR LEASE LINE, FT.  
(Also to nearest drlg. unit line, if any) 790

16. NO. OF ACRES IN LEASE  
1280 2415 73

17. NO. OF ACRES ASSIGNED  
TO THIS WELL 160

18. DISTANCE FROM PROPOSED LOCATION\*  
TO NEAREST WELL, DRILLING, COMPLETED,  
OR APPLIED FOR, ON THIS LEASE, FT. 3700'

19. PROPOSED DEPTH 3200;

20. ROTARY OR CABLE TOOLS Rotary

21. ELEVATIONS (Show whether DF, RT, GR, etc.)  
7298 Gr.

22. APPROX. DATE WORK WILL START\*  
September 15, 1984

5. LEASE DESIGNATION AND SERIAL NO.

6. IF INDIAN, ALLOTTEE OR TRIBE NAME  
Jicarilla

7. UNIT AGREEMENT NAME  
Contract No. 162

8. FARM OR LEASE NAME  
Mobil Apache

9. WELL NO.  
22

10. FIELD AND POOL, OR WILDCAT  
South Blanco PC

11. SEC., T., R., M., OR BLK.  
AND SURVEY OR AREA  
M  
17-23N-2W-NMPM

12. COUNTY OR PARISH  
Rio Arriba

13. STATE  
NM

DRILLING OPERATIONS AUTHORIZED ARE  
SUBJECT TO COMPLIANCE WITH ATTACHED

PROPOSED CASING AND CEMENTING PROGRAM

This action is subject to administrative  
appeal pursuant to 30 CFR 290.

"GENERAL REQUIREMENTS"	SIZE OF CASING	WEIGHT PER FOOT	SETTING DEPTH	QUANTITY OF CEMENT
10 1/2"	7 5/8	32#, J, 8rd, ST&C	100	35 CF-Circulate
6 1/4"	4 1/2	11#, K, 8rd, ST&C	3200 TD	360 CF-Circulate
	2 3/8" (Tbg)	4.3#, J, 8rd, ST&C	3100' +	Tubing

Plan to spud 10 1/2" hole and drill to 110' and set 100' of 7 5/8", 32#, J-55, (New), 8rd, ST&C casing and cement with 35 cubic feet of Class B cement with 2% CaCl<sub>2</sub>. This will circulate the cement. Drill 6 1/4" hole to a total depth of 3200' or sufficient depth to test the Pictured Cliffs formation and run appropriate logs. If production is indicated, 4 1/2", 11# (New), K, 8rd, ST&C casing will be run to total depth, cemented with sufficient cement (300 CF of 50-50 Pozmix and 60 CF of Class B) to circulate cement to surface, perforate Pictured Cliffs and stimulate.

10" Schaffer Double gate hydraulic BOP tested to 3000 psi will be on well during all drilling operations.

The anticipated starting date will be September 15, 1984. The drilling, completion and testing should be finished within 45 days from spud, approximately October 30, 1984.

IN ABOVE SPACE DESCRIBE PROPOSED PROGRAM: If proposal is to deepen or plug back, give data on present productive zone and proposed new productive zone. If proposal is to drill or deepen directionally, give pertinent data on subsurface locations and measured and true vertical depths. Give blowout preventer program, if any.

24. SIGNED *[Signature]* TITLE Morris B. Jones, ENGINEER DATE July 19, 1984

(This space for Federal or State official use)

PERMIT NO. \_\_\_\_\_ APPROVAL DATE \_\_\_\_\_

APPROVED BY *[Signature]* TITLE \_\_\_\_\_

CONDITIONS OF APPROVAL, IF ANY:  
OIL CONT. DIST. 3 NM-OCC

\*See Instructions On Reverse Side

APPROVED  
AS AMENDED  
OCT 01 1984  
J. Stan McKee  
AREA MANAGER  
FARMINGTON RESOURCE AREA

## OIL CONSERVATION DIVISION

P. O. BOX 2088

SANTA FE, NEW MEXICO 87501

Form C-102  
Revised 10-1-7

All distances must be from the outer boundaries of the Section.

Operator <b>SHERMAN F. WAGENSELLER</b>			Lease <b>Mobil Apache</b>			Well No. <b>22</b>		
Unit Letter <b>M</b>	Section <b>17</b>	Township <b>T.23N.</b>	Range <b>R.2W.</b>	County <b>Rio Arriba</b>				
Actual Footage Location of Well: <b>790</b> feet from the <b>South</b> line and <b>790</b> feet from the <b>West</b> line								
Ground Level Elev. <b>7298</b>	Producing Formation <b>Pictured Cliffs</b>		Pool <b>South Blanco</b>		Dedicated Acreage: <b>160</b> Acres			

1. Outline the acreage dedicated to the subject well by colored pencil or hachure marks on the plat below.
2. If more than one lease is dedicated to the well, outline each and identify the ownership thereof (both as to working interest and royalty).
3. If more than one lease of different ownership is dedicated to the well, have the interests of all owners been consolidated by communitization, unitization, force-pooling, etc?

☐ Yes ☐ No If answer is "yes," type of consolidation \_\_\_\_\_

If answer is "no," list the owners and tract descriptions which have actually been consolidated. (Use reverse side of this form if necessary.) \_\_\_\_\_

No allowable will be assigned to the well until all interests have been consolidated (by communitization, unitization, forced-pooling, or otherwise) or until a non-standard unit, eliminating such interests, has been approved by the Commission.

		<b>RECEIVED</b> 007031984 OIL CON. DIV. DIST. 3	
		<b>RECEIVED</b>	
SECTION 17 T.23N. R.2W.			

Mobil Apache #22

790'

790'

0 330 660 990 1320 1650 1980 2310 2640 2000 1500

REGISTERED LAND SURVEYOR  
STATE OF  
No. 2031  
NEW MEXICO  
FRED D. MARMON

## CERTIFICATION

I hereby certify that the information contained herein is true and complete to the best of my knowledge and belief.

*Morris B. Jones*  
Morris B. Jones

Position

Engineer

Company

Brana Corporation

Date

July 19, 1984

I hereby certify that the well location shown on this plat was plotted from field notes of actual surveys made by me or under my supervision, and that the same is true and correct to the best of my knowledge and belief.

Date Surveyed

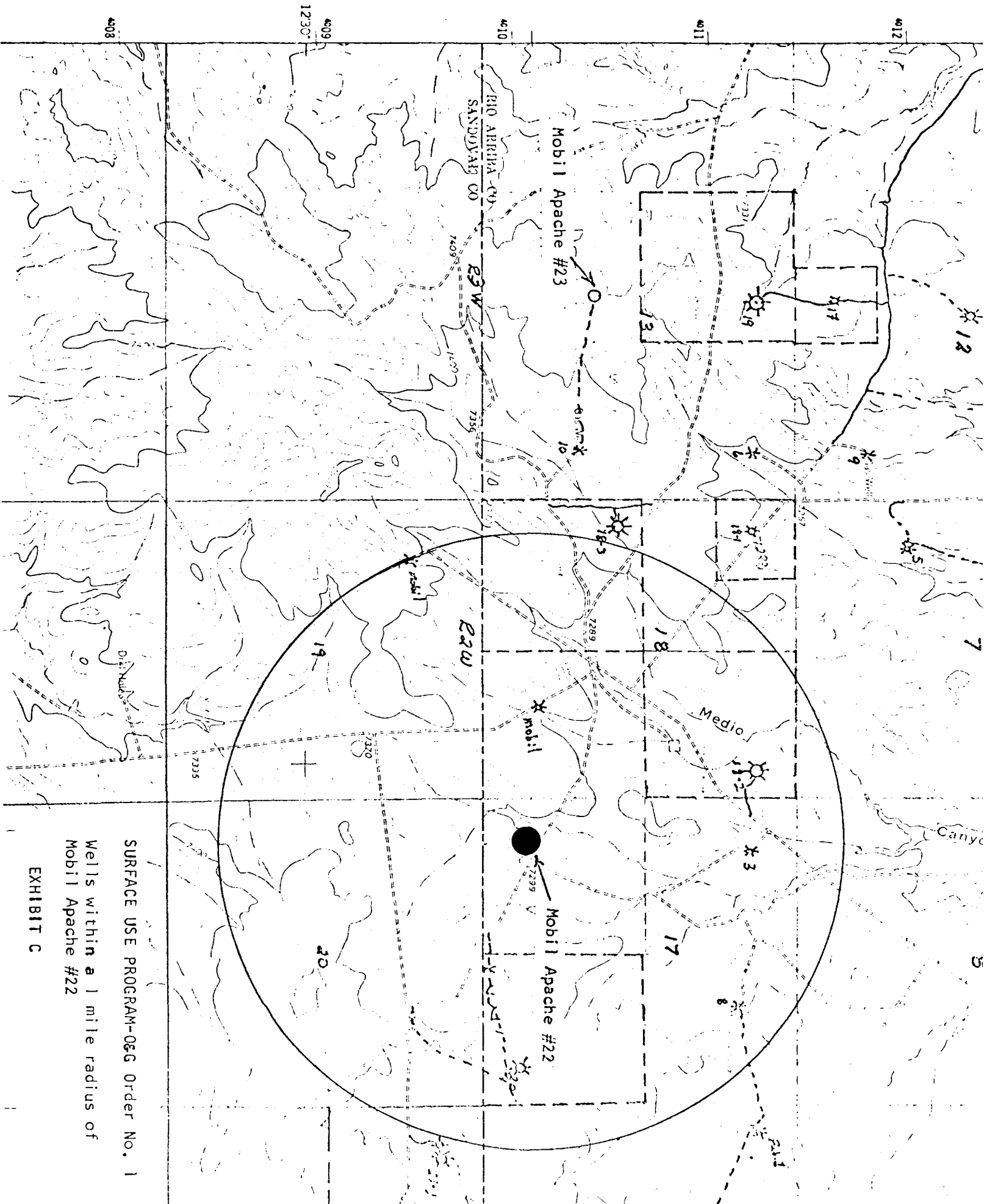
July 13, 1984

Registered Professional Engineer  
and/or Land Surveyor

*Fred D. Marmon*  
Fred D. Marmon

Certificate No.

N.M. 2031



SURFACE USE PROGRAM-06G Order No. 1

Wells within a 1 mile radius of  
Mobil Apache #22

EXHIBIT C