

UNITED STATES
DEPARTMENT OF THE INTERIOR
BUREAU OF LAND MANAGEMENT

APPLICATION FOR PERMIT TO DRILL, DEEPEN, OR PLUG BACK

1a. TYPE OF WORK

DRILL ☒

DEEPEN ☐

PLUG BACK ☐

b. TYPE OF WELL

OIL
WELL ☒

GAS
WELL ☐

OTHER

SINGLE
ZONE ☐

MULTIPLE
ZONE ☐

2. NAME OF OPERATOR

Jack A. Cole

3. ADDRESS OF OPERATOR

P.O. Box 191, Farmington, New Mexico, 87499

4. LOCATION OF WELL (Report location clearly and in accordance with any State requirements.)

At surface

800' FNL, 960' FEL

At proposed prod. zone
same

14. DISTANCE IN MILES AND DIRECTION FROM NEAREST TOWN OR POST OFFICE

Counselor's Trading Post - 4 miles

15. DISTANCE FROM PROPOSED*

LOCATION TO NEAREST
PROPERTY OR LEASE LINE, FT.
(Also to nearest drlg. unit line, if any)

800'

16. NO. OF ACRES IN LEASE

480

17. NO. OF ACRES ASSIGNED
TO THIS WELL

40/160

18. DISTANCE FROM PROPOSED LOCATION*

TO NEAREST WELL, DRILLING, COMPLETED,
OR APPLIED FOR, ON THIS LEASE, FT.

3960'

19. PROPOSED DEPTH

5800'

20. ROTARY OR CABLE TOOLS

Rotary

21. ELEVATIONS (Show whether DF, RT, GR, etc.)

6857' GR

DRILLING OPERATIONS AUTHORIZED ARE
SUBJECT TO COMPLIANCE WITH ATTACHED

22. APPROX. DATE WORK WILL START*

October 22, 1984

23. PROPOSED CASING AND CEMENTING PROGRAM

This action is subject to administrative
appeal pursuant to 30 CFR 290.

SIZE OF HOLE	SIZE OF CASING	WEIGHT PER FOOT	SETTING DEPTH	QUANTITY OF CEMENT
13-1/2"	9-5/8"	36.0	200'	Cement to surface
8-3/4"	7"	23.0	5450'	Determined by Caliper Log
6-1/4"	4-1/2"	10.5	5600'	None

All producing intervals in Gallup Formation will be stimulated as necessary.

EXHIBITS:

- "A" Location and Elevation Plot
- "B" Ten Point Compliance Program
- "C" Blowout Preventor Diagram
- "D" Multi-point Requirements of APD
- "E" Access Road to Location
- "F" Drill Rig Layout
- "G" Fracturing Program Layout
- "H" Location Profile

RECEIVED
OCT 16 1984
OIL CON. DIV.
DIST. 3

The gas for this well is committed. The NE 1/4, Section 7, is dedicated to this well.

IN ABOVE SPACE DESCRIBE PROPOSED PROGRAM: If proposal is to deepen or plug back, give data on present productive zone and proposed new productive zone. If proposal is to drill or deepen directionally, give pertinent data on subsurface locations and measured and true vertical depths. Give blowout preventer program, if any.

24.

SIGNED

Dewayne Blancett

TITLE Production Superintendent

(This space for Federal or State office use)

PERMIT NO.

APPROVAL DATE

APPROVED BY

TITLE

CONDITIONS OF APPROVAL, IF ANY:

APPROVED

AS AMENDED
OCT 12 1984

AREA MANAGER
FARMINGTON RESOURCE AREA

NMOCC
*See Instructions On Reverse Side

OIL CONSERVATION DIVISION

P. O. BOX 2088

SANTA FE, NEW MEXICO 87501

Form C-107
Revised 10-1-78

STATE OF NEW MEXICO

OIL AND MINERALS DEPARTMENT

All distances must be from the outer boundaries of the Section.

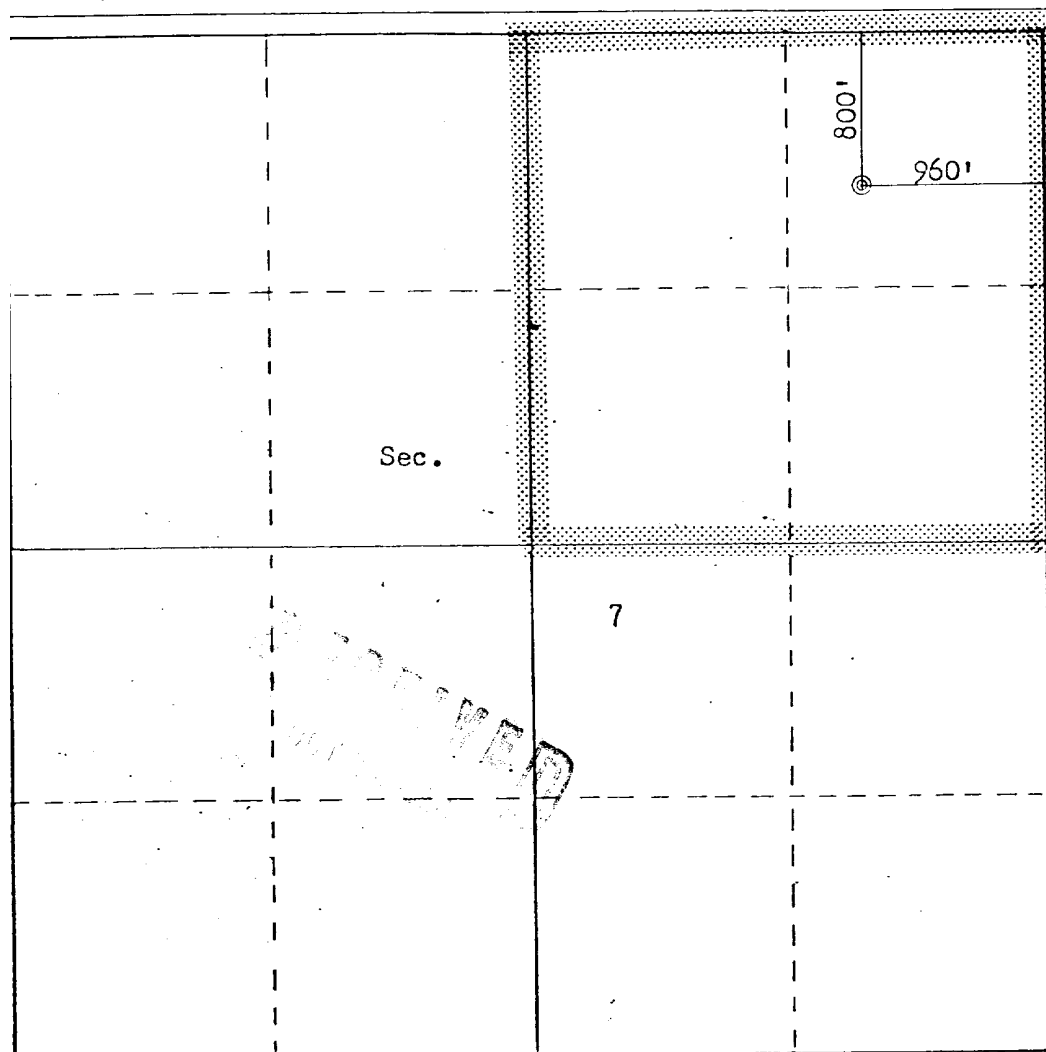
Operator JACK A. COLE			Lease MARCUS		Well No. 1
Unit Letter A	Section 7	Township 23N	Range 6W	County Rio Arriba	
Actual Footage Location of Well:					
800 feet from the North line and		960 feet from the East line			
Ground Level Elev: 6857	Producing Formation Gallup	Pool Counselor's Gallup		Dedicated Acreage: 160	Acres

1. Outline the acreage dedicated to the subject well by colored pencil or hachure marks on the plat below.
2. If more than one lease is dedicated to the well, outline each and identify the ownership thereof (both as to working interest and royalty).
3. If more than one lease of different ownership is dedicated to the well, have the interests of all owners been consolidated by communitization, unitization, force-pooling, etc?

☐ Yes ☐ No If answer is "yes," type of consolidation _____

If answer is "no," list the owners and tract descriptions which have actually been consolidated. (Use reverse side of this form if necessary.) _____

No allowable will be assigned to the well until all interests have been consolidated (by communitization, unitization, forced-pooling, or otherwise) or until a non-standard unit, eliminating such interests, has been approved by the Commission.



Scale: 1"=1000'

CERTIFICATION

I hereby certify that the information contained herein is true and complete to the best of my knowledge and belief.

Name
Dwaine Blawie
Position
Production Supt.
Company
Cole Production
Date
October 22, 1984

I hereby certify that the well location shown on this plat was plotted from field notes of actual surveys made by me or under my supervision, and that the same is true and correct to the best of my knowledge and belief.

Date Surveyed
September 24, 1984
Registered Professional Engineer and Land Surveyor
Fred B. Kerr Jr.
Fred B. Kerr Jr.
Certificate No. 3950

JACK A. COLE
MARCUS NO. 1

LIDBROOK QUADRANGLE
NEW MEXICO

UNITED
DEPARTMENT OF
GEOLOGICAL

7.5 MINUTE SERIES (TOPOGRAPHIC)

32°30'N

272

7 W

6 W

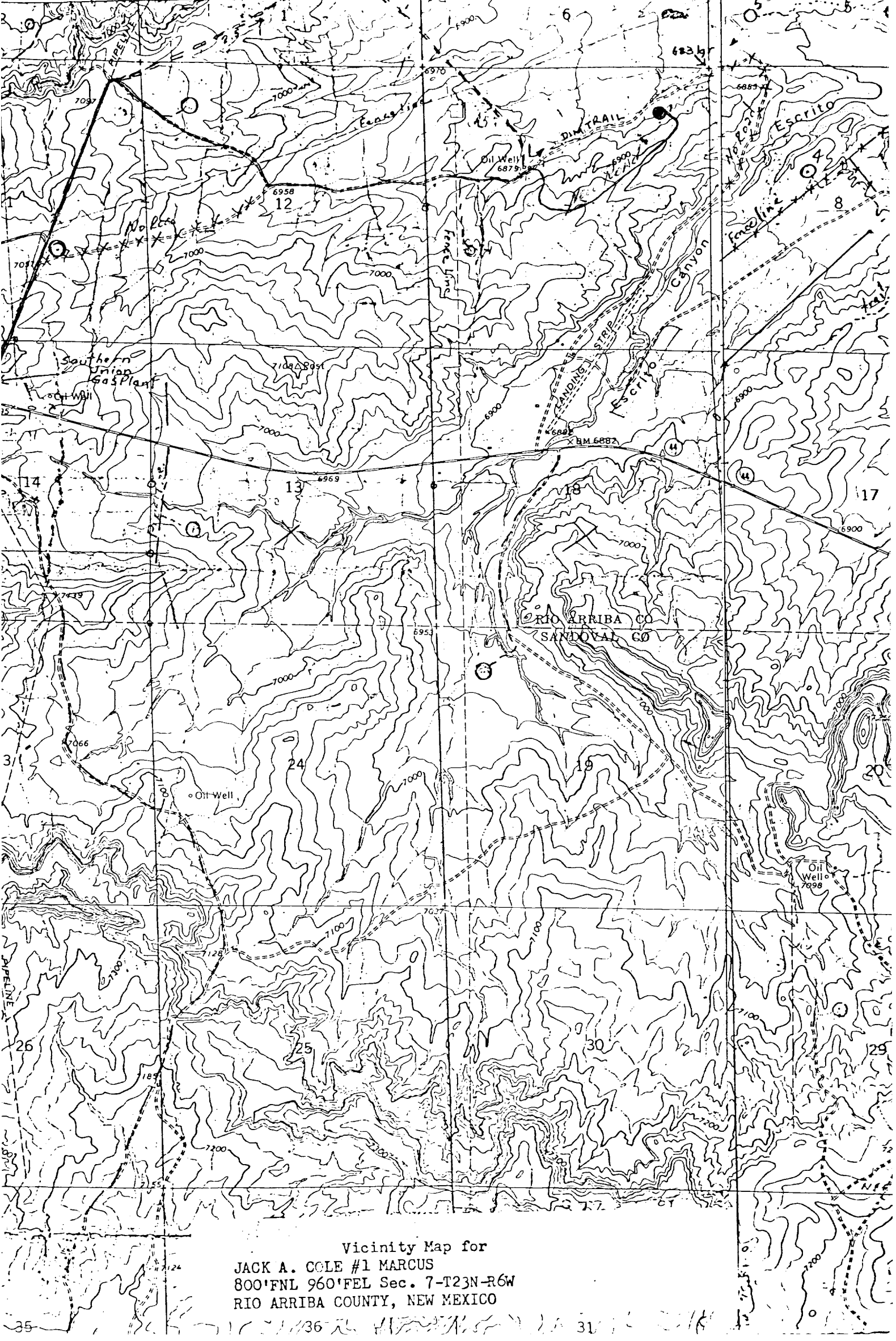
274

130 000 FEET

275

10°30'N

276000 E



Vicinity Map for
JACK A. COLE #1 MARCUS
800'FNL 960'FEL Sec. 7-T23N-R6W
RIO ARRIBA COUNTY, NEW MEXICO