

Form 3160-3  
(November 1983)  
(formerly 9-331C)SUBMIT IN TRIPLICATE\*  
(Other instructions on  
reverse side)Form approved.  
Budget Bureau No. 1004-0136  
Expires August 31, 1985UNITED STATES  
DEPARTMENT OF THE INTERIOR  
BUREAU OF LAND MANAGEMENT

## APPLICATION FOR PERMIT TO DRILL, DEEPEN, OR PLUG BACK

## 1a. TYPE OF WORK

DRILL ☒DEEPEN ☐PLUG BACK ☐

## b. TYPE OF WELL

OIL  
WELL ☒GAS  
WELL ☐OTHER ☐SINGLE  
ZONE ☐MULTIPLE  
ZONE ☒

## 2. NAME OF OPERATOR

BCO, Inc.

## 3. ADDRESS OF OPERATOR

135 Grant Avenue, Santa Fe, New Mexico 87501

## 4. LOCATION OF WELL (Report location clearly and in accordance with any State requirements.)

At surface

990' FSL 1800' FEL Sec. 3 T23N, R7W, N.M.P.M., Rio Arriba County  
At proposed prod. zone New Mexico  
Same

## 14. DISTANCE IN MILES AND DIRECTION FROM NEAREST TOWN OR POST OFFICE\*

Approximately 1½ Miles North of Lybrook, New Mexico

## 15. DISTANCE FROM PROPOSED\*

LOCATION TO NEAREST  
PROPERTY OR LEASE LINE, FT.  
(Also to nearest drlg. unit line, if any)

840 Feet

## 16. NO. OF ACRES IN LEASE

1086, more or less

## 18. DISTANCE FROM PROPOSED LOCATION\*

TO NEAREST WELL, DRILLING, COMPLETED,  
OR APPLIED FOR, ON THIS LEASE, FT.

2710

## 19. PROPOSED DEPTH

6600

## 21. ELEVATIONS (Show whether DF, RT, GR, etc.)

GR 7020'

## DRILLING OPERATIONS AUTHORIZED ARE

SUBJECT TO COMPLIANCE WITH ATTACHED

## 23.

"GENERAL REQUIREMENTS" AND CEMENTING PROGRAM

This action is subject to administrative  
approval pursuant to 30 CFR 290.  
QUANTITY OF CEMENT

SIZE OF HOLE	SIZE OF CASING	WEIGHT PER FOOT	SETTING DEPTH	QUANTITY OF CEMENT
12½"	8 5/8" New	24# 8 Rd	300' ±	195 Sacks Class B
7 7/8"	4½" New	11.6# N-80	6600	1705 Sacks Class H

Drill surface hole to 300' ±. Cement to surface with approximately 195 sacks Class B 3% CaCl, ½# flocele. Drill 7 7/8" hole to T.D. 6600'. Run 4½" casing to T.D. Cement to be as follows:

Stage 1: T.D. to ? 10 bbls. mud flush. Approximately 150 sacks Class H 2% CaCl, 8# salt, ½# flocele, 6½# gilsonite. Mixed at 15.1#s. Yield 1.36 cubic feet per sack or a total of 204 cubic feet. Top of cement will be reported on a subsequent Sundry Notice based on the cement log.

Stage 2: 5680 to ? 10 bbls. mud flush. Approximately 175 sacks Class H 2% CaCl, 8# salt, ½# flocele, 6½# gilsonite. Mixed at 15.1#. Yield 1.36 cubic feet per sack for a total of 238 cubic feet. Top of cement will be reported on a subsequent Sundry Notice based on the cement log.

Stage 3: 4650 to ? 10 bbls water, 1000 gallons Flo Check, 5 bbls water approximately 1380 sacks of 65/35 Class H, 3% gel, 12½ gilsonite, 5.6# salt, 8.2# Calseal. Mixed at 13.4#. Plan to circulate to surface. Actual third stage size will be determined after caliper log determines area to be cemented.

IN ABOVE SPACE DESCRIBE PROPOSED PROGRAM: If proposal is to deepen or plug back, give data on present productive zone and proposed new productive zone. If proposal is to drill or deepen directionally, give pertinent data on subsurface locations and measured and true vertical depths. Give blowout preventer program, if any.

## 24.

SIGNED

Elizabeth B. Keeshan  
Elizabeth B. Keeshan

TITLE

Comptroller

(This space for Federal or State office use)

FEB 06 1985

APPROVED BY  
CONDITIONS OF APPROVAL, IF ANY:

OIL CON. DIV.

DIST 2

B C O. INC.

\*See Instructions On Reverse Side

APPROVED

AS AMENDED

JAN 30 1985

(SGD.) MAT MILLENBACH

AREA MANAGER  
FARMINGTON RESOURCE AREA

STATE OF NEW MEXICO  
ENERGY AND MINERALS DEPARTMENT

OIL CONSERVATION DIVISION

P. O. BOX 2088  
SANTA FE, NEW MEXICO 87501

Form C-102  
Revised 10-1-78

All distances must be from the outer boundaries of the Section.

Operator <b>BCO, Inc.</b>		Lease <b>Dunn</b>		Well No. <b>12</b>
Unit Letter <b>0</b>	Section <b>3</b>	Township <b>23 North</b>	Range <b>7 West</b>	County <b>Rio Arriba</b>
Actual Footage Location of Well: <b>990</b> feet from the <b>South</b> line and <b>1800</b> feet from the <b>East</b> line				
Ground Level Elev. <b>7020</b>	Producing Formation <b>Gallup &amp; Dakota</b>	Pool <b>Lybrook Gallup &amp; Undes. Dakota</b>	Dedicated Acreage: <b>40</b> Acres	

1. Outline the acreage dedicated to the subject well by colored pencil or hatchure marks on the plat below.
2. If more than one lease is dedicated to the well, outline each and identify the ownership thereof (both as to working interest and royalty).
3. If more than one lease of different ownership is dedicated to the well, have the interests of all owners been consolidated by communitization, unitization, force-pooling, etc?

☐ Yes ☐ No If answer is "yes," type of consolidation \_\_\_\_\_

If answer is "no," list the owners and tract descriptions which have actually been consolidated. (Use reverse side of this form if necessary.) \_\_\_\_\_

No allowable will be assigned to the well until all interests have been consolidated (by communitization, unitization, forced-pooling, or otherwise) or until a non-standard unit, eliminating such interests, has been approved by the Division.

CERTIFICATION

I hereby certify that the information contained herein is true and complete to the best of my knowledge and belief.

*Elizabeth B. Keeshan*

Name  
Elizabeth B. Keeshan

Position  
Comptroller

Company  
BCO, Inc.

Date  
January 7, 1985

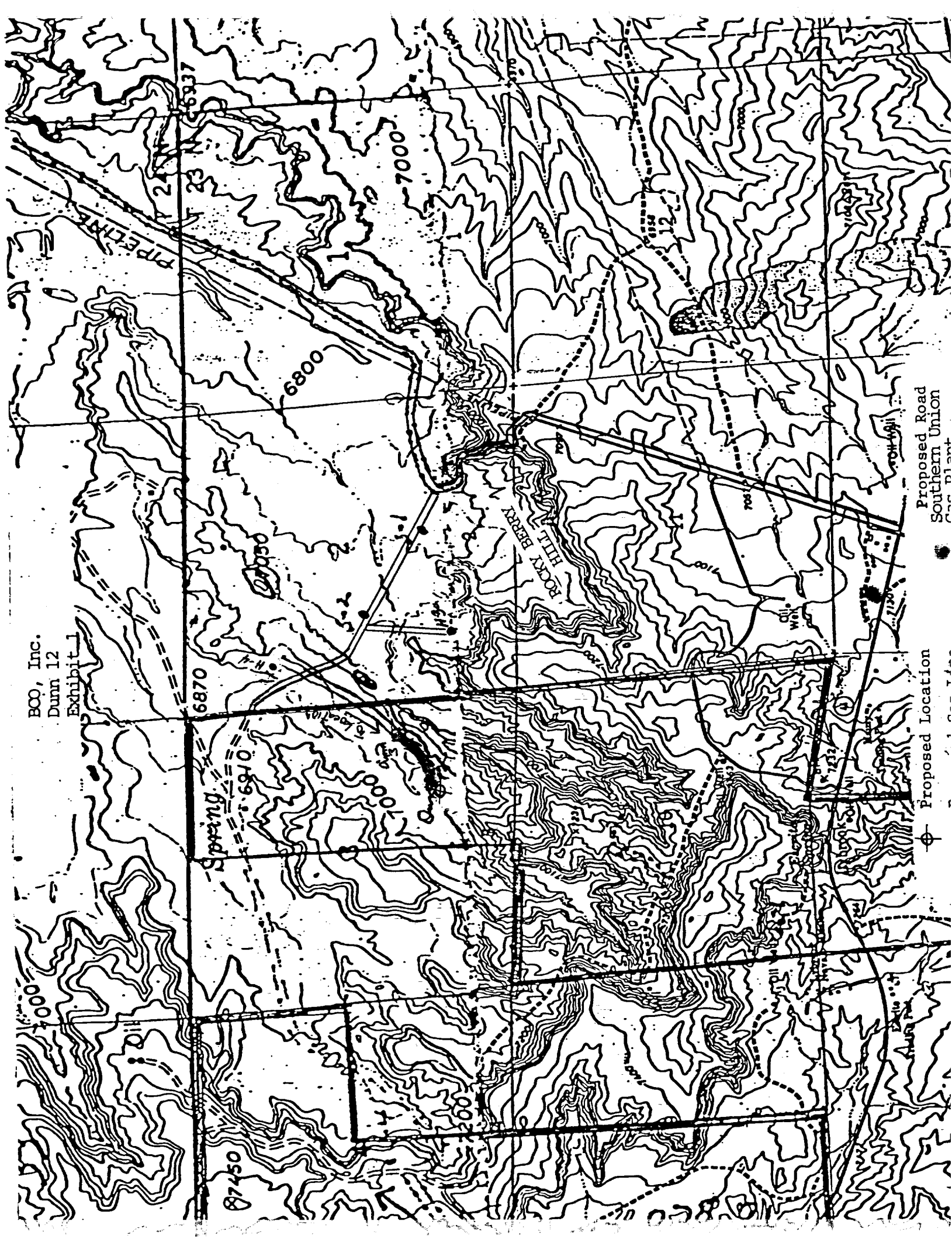
I hereby certify that the location shown on this plat was made by me or under my supervision and that the same is true and correct to the best of my knowledge.

Date Surveyed  
December 7, 1984

Registered Professional Engineer  
and/or Land Surveyor

*Edgar L. Risenhoover*  
Certificate No. 5979  
Edgar L. Risenhoover, L.S.

BCO, Inc.  
Dunn 12  
Exhibit 1



Proposed Road  
Southern Union  
Soc plant

Proposed Location