

UNITED STATES
DEPARTMENT OF THE INTERIOR
BUREAU OF LAND MANAGEMENT

FORM APPROVED
Budget Bureau No. 1004-0135
Expires: March 31, 1993

SUNDRY NOTICES AND REPORTS ON WELLS

Do not use this form for proposals to drill or to deepen or reentry to a different reservoir.
Use "APPLICATION FOR PERMIT—" for such proposals

SUBMIT IN TRIPLICATE

1. Type of Well

☒ Oil Well ☐ Gas Well ☐ Other

2. Name of Operator

Lomak Petroleum, Inc.

3. Address and Telephone No.

3030 Northwest Expressway, Suite 1850 Oklahoma City, OK 73112

4. Location of Well (Footage, Sec., T., R., M., or Survey Description)

(405) 947-3139

1740' FNL, 720' FWL Sec. ^{E-} 6 T23N R6W

5. Lease Designation and Serial No.

SF 478362

6. If Indian, Allottee or Tribe Name

7. If Unit or CA, Agreement Designation

8. Well Name and No.

Marcus #5

9. API Well No.

30-039-23691-00

10. Field and Pool, or Exploratory Area

Lybrook (Gallup) GP

11. County or Parish, State

Rio Arriba, NM

12. CHECK APPROPRIATE BOX(s) TO INDICATE NATURE OF NOTICE, REPORT, OR OTHER DATA

TYPE OF SUBMISSION

- ☒ Notice of Intent
☐ Subsequent Report
☐ Final Abandonment Notice

TYPE OF ACTION

- ☒ Abandonment
☐ Recompletion
☐ Plugging Back
☐ Casing Repair
☐ Altering Casing
☐ Other
☐ Change of Plans
☐ New Construction
☐ Non-Routine Fracturing
☐ Water Shut-Off
☐ Conversion to Injection
☐ Dispose Water

(Note: Report results of multiple completion on Well Completion or Recompletion Report and Log form.)

13. Describe Proposed or Completed Operations (Clearly state all pertinent details, and give pertinent dates, including estimated date of starting any proposed work. If well is directionally drilled, give subsurface locations and measured and true vertical depths for all markers and zones pertinent to this work.)*

Propose to plug and abandon this well per the attached procedure.

RECEIVED
JUN - 9 1997
OIL CON. DIV.
DIST. 3

RECEIVED
JUN 23 PM 3:06
OIL CON. DIV.
DIST. 3

14. I hereby certify that the foregoing is true and correct

Signed Blaise Strong Title Petroleum Engineer Date 5/22/97

(This space for Federal office use)

Approved by AS/Deane W. Spencer Title _____ Date JUN - 5 1997

Conditions of approval, if any:

Title 18 U.S.C. Section 1001, makes it a crime for any person knowingly and willfully to make to any department or agency of the United States any false, fictitious or fraudulent statements or representations as to any matter within its jurisdiction.

*See Instruction on Reverse Side

Marcus #5
6E -T 23N-R 6W
Rio Arriba County, NM

Workover Procedure

Objective: Plug and Abandon Well

Note: All cement volumes use 100' excess outside of pipe and 100' excess inside pipe. The stabilizing wellbore fluid will be 8.3 ppg, sufficient to balance all exposed formation pressures. The Class B cement properties are: 1.18 cf/sk, 5.2 gal/sk, and 15.6 ppg.

- 1.) Prepare blow pit. Install and test location rig anchors if necessary. Comply to all NMOCD and BLM safety regulations.
- 2.) MI & RU workover unit. Kill well w/ 2% KCL water if necessary. ND wellhead. NU BOP.
- 3.) POH and tally 2-3/8" tubing (visually inspect tubing while POH). If necessary, LD and PU 2-3/8" workstring.
- 4.) **Plug #1 (Gallup perforations and top - 5,726'-5,190')**: RIH with open ended tubing to 5,726'. Pump 30 bbls water and attempt to establish circulation. Mix 41 sx Class B cement and spot a balanced plug from 5,726'-5,190'. POH w/ tubing assembly and WOC.
- 5.) **Plug #2 (Mesaverde top - 3,735'-3,635')**: Perforate 4 squeeze holes at 3,735'. RIH w/ gauge ring on wireline to 3,690'. POH w/ gauge ring. RIH w/ 4-1/2" cement retainer and set at 3,685'. Establish rate into squeeze holes. Mix and pump 51 sx Class B cement, squeeze 39 sx cement outside of casing from 3,735'-3,635' to cover Mesaverde top and leave 12 sx inside casing. POH to 2,153'.
- 6.) **Plug #3 (Pictured Cliffs, Fruitland, Kirtland and Ojo Alamo tops, 2,153'-1,445')**: Mix 54 sx Class B cement and set a balanced plug inside casing from 2,153'-1,445' to cover the Pictured Cliffs, Fruitland, Kirtland, and Ojo Alamo formation tops. PUH and set tubing at 310'.
- 7.) **Plug #4 (Surface)**: Attempt to establish rate into bradenhead valve (maximum pressure 300 psi). If able to pump into bradenhead, fill up surface casing/production casing annulus with cement. With tubing at 310', mix approximately 24 sx Class B cement and pump down tubing. Circulate good cement out casing valve. POH and LD tubing and setting tool. SWI and WOC.
- 8.) ND BOP and cut off wellhead below surface casing. Install P&A marker to comply with regulations. RD, MOL, cut off anchors, and restore location.

**Marcus -#5
6E - 23N - 6W
Rio Arriba Co., NM**

Well History

- 5-4-85** Spudded well. Drilled 12-1/4" surf hole. Set 8-5/8", 24#, csg at 260' and cmt'd w/ 250 sx Class 'B' + 3% CaCl + 1/4# flocele/sk.
- 5-14-85** Drilled 7-7/8" hole to 5,841' TD. Attempted to log well 4 times but could not get passed 577'. Got logging tools down on 5th attempt. Logged well from 5,851'.
- 5-17-85** Ran 4-1/2" (10.5#-K-55) prod csg and set at 5,829' KB. Set stage tool at 2,262'. Cmt'd around shoe w/ 400 sx 50/50 Poz, 2% gel, 6.25# gilsonite/sk and 6#/sk salt. Cmt'd through stage tool w/ 350 sx 65-35 Poz + 12% gel + 6.25# gilsonite/sk + 50 sx Class "B" neat.
- 5-22-85** Drilled out stage tool.
- 5-23-85** Perf'd from 5,601-13', 5,616-18', 5,640-42', 5,646-52', 5,666-72', and 5,674-76' (1JSPF, 30 holes). RIH w/ pkr on 2-3/8" tbg. Broke down perfs w/ lease oil at 2,100 psi. Dropped 40 ball sealers and balled off. POH w/ tbg.
- 5-24-85** Fraced down csg w/ 44,000 gals gelled oil and 115,000# 20/40 sd. SWI.
- 5-28-85** SICP 800 psi. Cleaned out sd from 5,673'-5,757'. RIH w/ SN, expendable ck, and 2-3/8" tbg. Set EOT at 5,592'.
- 9-9-85** POH w/ tbg assembly. Set RBP at 5,517'. Perf'd from 5,472'-85' (1 JSPF- 13 holes). Broke down perfs at 3,800 psi. Established rate at 4 BPM at 2,800 psi. Fraced down tbg w/ 15,207 gals gelled oil and 24,000# 20/40 sd at 12 BPM and 3,800 psi. Tagged sd at 5,422'. Cleaned out sand and retrieved RBP. RIH w/ SN and 2-3/8" tbg. Set EOT at 5,462'.

LOMAK PETROLEUM, INC.

WELLBORE SCHEMATIC

WELL NAME: MARCUS #5

FIELD: LYBROOK (GALLUP) GP

LOCATION: SEC 6E - T23N - R6W

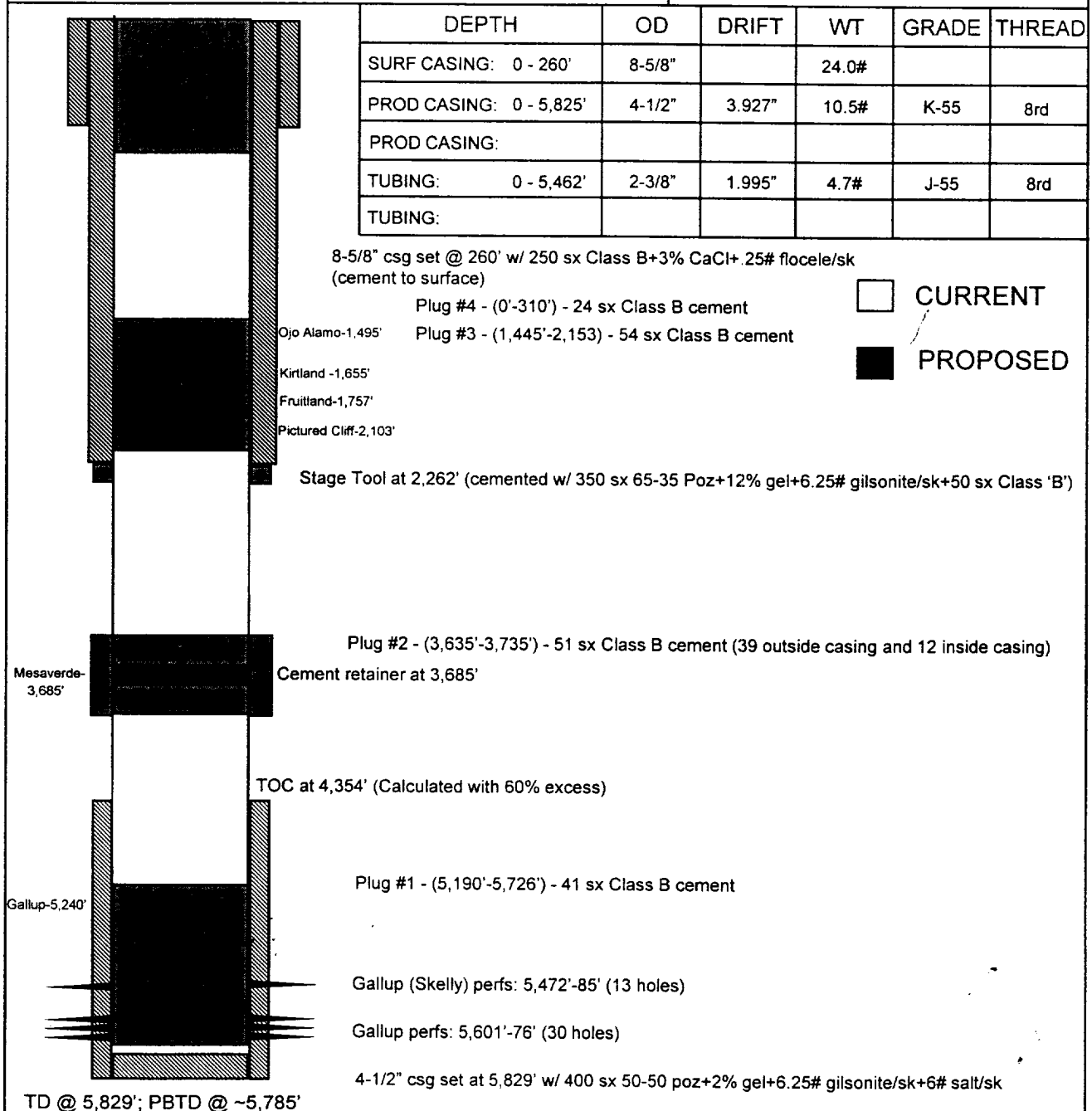
COUNTY, ST: RIO ARRIBA CO., NM

ELEVATION: 6,980' GL; 6,992' KB

COMPLETION DATE: 9-9-85

PREPARED BY: BLAINE STRIBLING

DATE: 5-21-97

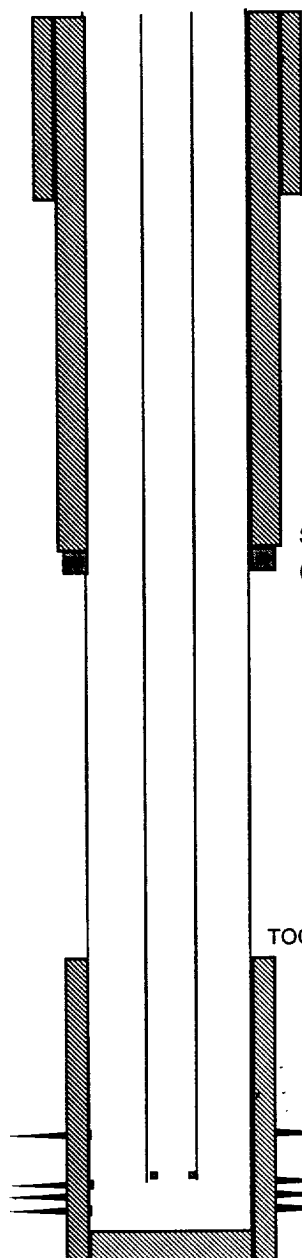


LOMAK PETROLEUM, INC.

WELLBORE SCHEMATIC

WELL NAME: MARCUS #5	FIELD: LYBROOK (GALLUP) GP
LOCATION: SEC 6E - T23N - R6W	COUNTY, ST: RIO ARRIBA, NM
ELEVATION: 6,980' GL; 6,992' KB	COMPLETION DATE: 9-9-85
PREPARED BY: BLAINE STRIBLING	DATE: 5-16-97

DEPTH	OD	DRIFT	WT	GRADE	THREAD
SURF CASING: 0 - 260'	8-5/8"		24.0#		
PROD CASING: 0 - 5,829'	4-1/2"	3.927"	10.5#	K-55	8rd
PROD CASING:					
TUBING: 0 - 5,462'	2-3/8"	1.995"	4.7#	J-55	8rd
TUBING:					



8-5/8" csg set @ 260' w/250 sx Class 'B' + 3% CaCl + .25# Flocele/sk (cement to surface)

☒ CURRENT
☐ PROPOSED

Stage Tool at 2,262' (cemented w/ 350 sx 65-35 Poz+12% gel+6.25# gilsonite/sk+50 sx Class 'B')
(cement to surface)

TOC @ 4,354' (Calculated with 60% excess)

Gallup (Skelly) perms: 5,472'-85' (13 holes)

Gallup perms: 5,601'-76' (30 holes)

4-1/2" csg set at 5,829' w/ 400 sx 50-50 poz+2% gel+ 6.25# gilsonite/sk+6# salt/sk

TD @ 5,829'; PBTD @ ~5,785'