

UNITED STATES  
DEPARTMENT OF THE INTERIOR  
BUREAU OF LAND MANAGEMENT

APPLICATION FOR PERMIT TO DRILL, DEEPEN, OR PLUG BACK

1a. TYPE OF WORK

DRILL ☒

DEEPEN ☐

PLUG BACK ☐

b. TYPE OF WELL

OIL  
WELL ☒

GAS  
WELL ☐

OTHER

SINGLE  
ZONE ☐

MULTIPLE  
ZONE ☒

2. NAME OF OPERATOR

Chace Oil Company, Inc.

3. ADDRESS OF OPERATOR

313 Washington, SE, Albuquerque, NM 87108

4. LOCATION OF WELL (Report location clearly and in accordance with any State requirements.)

At surface

1751' FNL & 1914' FEL

At proposed prod. zone

Unit 'G', Section 3, T23N, R4W

14. DISTANCE IN MILES AND DIRECTION FROM NEAREST TOWN OR POST OFFICE\*

17 miles W-SW of Lindrith, New Mexico

15. DISTANCE FROM PROPOSED\* LOCATION TO NEAREST PROPERTY OR LEASE LINE, FT. (Also to nearest drilg. unit line, if any)

1751' from lease line

431' from unit line

18. DISTANCE FROM PROPOSED LOCATION\* TO NEAREST WELL, DRILLING COMPLETED, OR APPLIED FOR, ON THIS LEASE, FT.

1000'

16. NO. OF ACRES IN LEASE

1920

19. PROPOSED DEPTH

7458'

17. NO. OF ACRES ASSIGNED TO THIS WELL

40

20. ROTARY OR CABLE TOOLS

Rotary

22. APPROX. DATE WORK WILL START\*

9/13/85

21. ELEVATIONS (Show whether DT, RT, GR, etc.)  
7149' GR  
23. DRILLING OPERATIONS AUTHORIZED ARE  
SUBJECT TO COMPLIANCE WITH ATTACHED  
"GENERAL REQUIREMENTS". PROPOSED CASING AND CEMENTING PROGRAM

SIZE OF HOLE	SIZE OF CASING	WEIGHT PER FOOT	SETTING DEPTH	QUANTITY OF CEMENT
12 1/4"	8 5/8"	24# (J-55)	225'	225 sxs (405 CF) Class B cement
7 7/8"	4 1/2"	11.6# (N-80)	7458'	1st stage: 750 sxs (1350 CF) 50/50 pozmix 2nd stage: 505 sxs (909 CF) 40/60 pozmix, 12% gel 40 sxs (72 CF) Class B cement

Drill 230' of 12 1/4" surface hole. Set 225' of 8 5/8" casing. Cement to surface with 225 sxs (405 CF) cement. Using a water base mud, (15% oil), and Schaeffer standard doublegate hydraulic BOP, drill 7 7/8" hole to 7458' to test the Dakota formation. Logging Program: Run Dil, Caliper, GR, SP, FDC-CNL from T. D. to surface.

Estimated Tops:

Ojo Alamo	2481'	Point Lookout	5007'	Dakota 'A'	7167'
Pictured Cliffs	2944'	Gallup	5766'	Dakota 'D'	7303'
Chacra	3296'	Tocito	6762'	Burro Canyon	7383'
Cliff House	4505'	Greenhorn	7081'		

IN ABOVE SPACE DESCRIBE PROPOSED PROGRAM: If proposal is to deepen or plug back, give data on present productive zone and proposed new productive zone. If proposal is to drill or deepen directionally, give pertinent data on subsurface locations and measured and true vertical depths. Give blowout preventer program, if any.

24.

SIGNED

Monte Anderson

TITLE

Geologist

DATE

April 30, 1985

(This space for Federal or State office use)

This action is subject to technical and procedural review pursuant to 43 CFR 3165.3 and appeal pursuant to 43 CFR 3165.4.

APPROVAL DATE

JUN 04 1985

APPROVED  
AS AMENDED

MAY 31 1985

/s/ J. Stan McKee

M. MILLENBACH  
AREA MANAGER

NMOCC

\*See Instructions On Reverse Side

## OIL CONSERVATION DIVISION

P. O. BOX 2088

STATE OF NEW MEXICO  
ENERGY AND MINERALS DEPARTMENT

SANTA FE, NEW MEXICO 87501

Form C-102  
Revised 10-1-78

All distances must be from the outer boundaries of the Section.

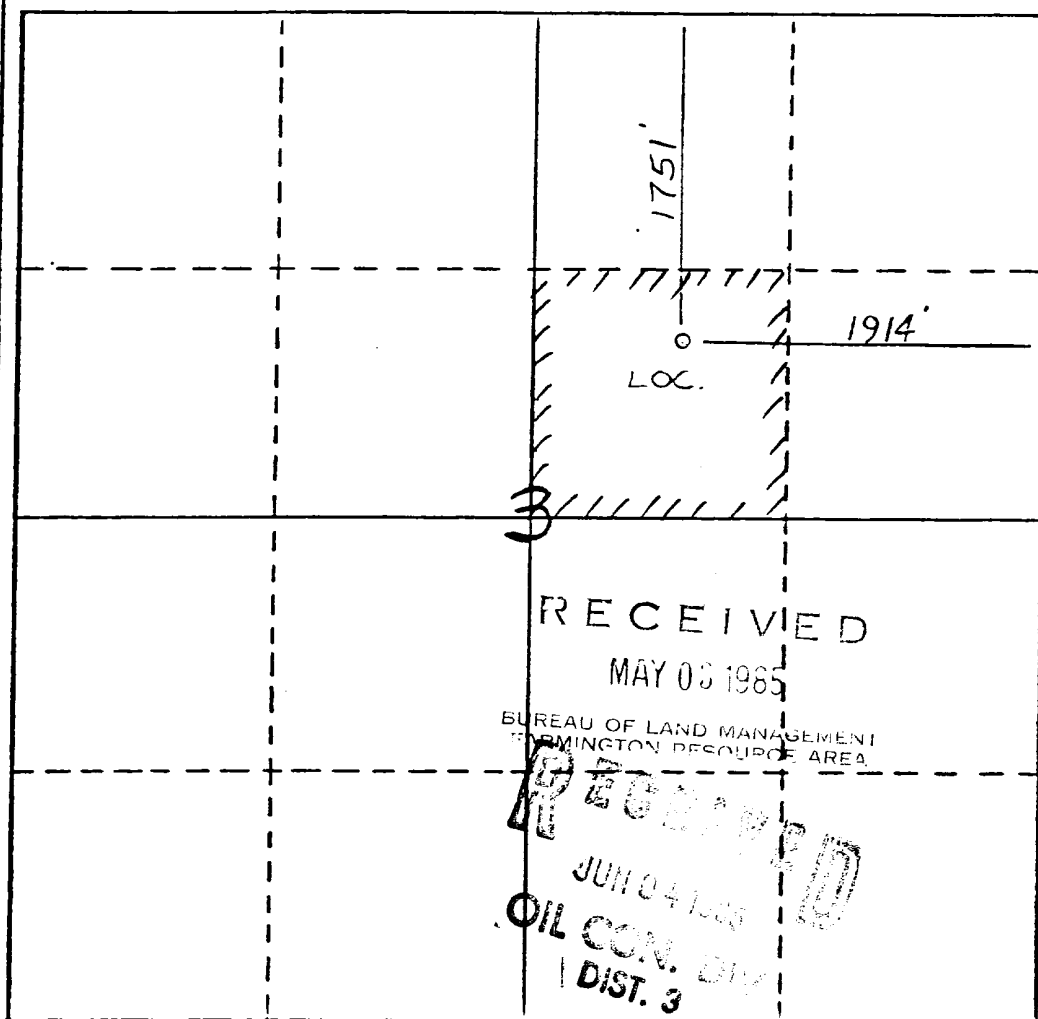
Operator <b>CHACE. OIL COMPANY</b>		Lease <b>JICARILLA 71</b>		Well No. <b>7-43</b>	
Unit Letter <b>G</b>	Section <b>3</b>	Township <b>23 NORTH</b>	Range <b>4 WEST</b>	County <b>RIO ARriba</b>	
Actual Footage Location of Well: <b>1751</b> feet from the <b>NORTH</b> line and <b>1914</b> feet from the <b>EAST</b> line					
Ground Level Elev. <b>7149'</b>	Producing Formation <b>Gallup-Dakota</b>		Pool <b>S. Lindrith Gallup-Dakota</b>		Dedicated Acreage: <b>40</b> Acres

1. Outline the acreage dedicated to the subject well by colored pencil or hatchure marks on the plat below.
2. If more than one lease is dedicated to the well, outline each and identify the ownership thereof (both as to working interest and royalty).
3. If more than one lease of different ownership is dedicated to the well, have the interests of all owners been consolidated by communitization, unitization, force-pooling, etc?

☐ Yes ☐ No If answer is "yes," type of consolidation \_\_\_\_\_

If answer is "no," list the owners and tract descriptions which have actually been consolidated. (Use reverse side of this form if necessary.) \_\_\_\_\_

No allowable will be assigned to the well until all interests have been consolidated (by communitization, unitization, forced-pooling, or otherwise) or until a non-standard unit, eliminating such interests, has been approved by the Division.



## CERTIFICATION

I hereby certify that the information contained herein is true and complete to the best of my knowledge and belief.

**Monte Anderson**

Name

**Geologist**

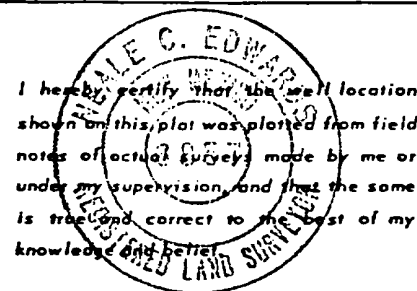
Position

**Chace Oil Company**

Company

**3-29-85**

Date



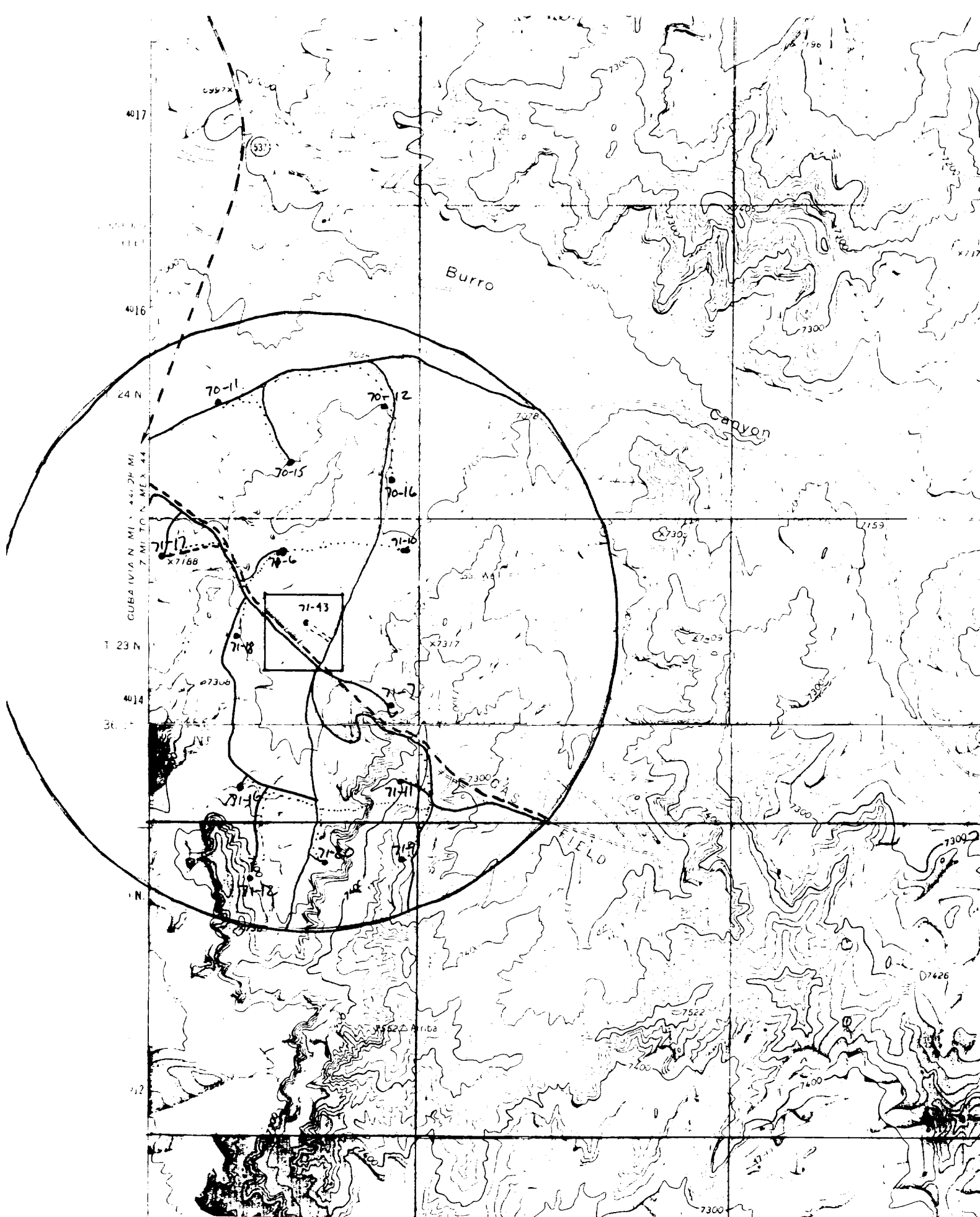
Date Surveyed

**3-21-85**Registered Professional Engineer  
and/or Land Surveyor

Certificate No.

**6957**

0 330 660 990 1320 1650 1980 2310 2640 2970 3300 3630 3960 4290 4620 4950 5280 5610 5940 6270 6600



NTL-6

3. A,B,C,D,E,G, H do not apply.

F. All Chace wells on map are Gallup Dakota wells.

NTL-6

4.A. All tank batteries and production facilities are located on well pads. 4.A.(3), (5), (6) do not apply. All gas lines owned by Chace Oil are temporary surface lines and are indicated by dotted line. .... Dashed line is El Paso buried