

UNITED STATES
DEPARTMENT OF THE INTERIOR
BUREAU OF LAND MANAGEMENT

APPLICATION FOR PERMIT TO DRILL, DEEPEN, OR PLUG BACK

1a. TYPE OF WORK

DRILL ☒

DEEPEN ☐

PLUG BACK ☐

b. TYPE OF WELL

OIL
WELL ☒

GAS
WELL ☐

OTHER

SINGLE
ZONE ☐

MULTIPLE
ZONE ☒

2. NAME OF OPERATOR

Chace Oil Company, Inc.

3. ADDRESS OF OPERATOR

313 Washington, SE, Albuquerque, NM 87108

4. LOCATION OF WELL (Report location clearly and in accordance with any State requirements)

At surface 700' FSL & 2310' FEL

Unit 'O', Section 4, T23N, R4W

At proposed prod. zone

14. DISTANCE IN MILES AND DIRECTION FROM NEAREST TOWN OR POST OFFICE

16 1/2 miles W-SW of Lindrith, New Mexico

15. DISTANCE FROM PROPOSED LOCATION TO NEAREST PROPERTY OR LEASE LINE, FT. (Also to nearest drilg. unit line, if any)

700' from lease line

330' from unit line

18. DISTANCE FROM PROPOSED LOCATION TO NEAREST WELL, DRILLING, COMPLETED, OR APPLIED FOR, ON THIS LEASE, FT.

1600'

21. ELEVATIONS (Show whether DF, RT, GR, etc.)

7136' GR

DRILLING OPERATIONS AUTHORIZED ARE

SUBJECT TO COMPLIANCE WITH ATTACHED

"GENERAL REQUIREMENTS"

23. PROPOSED CASING AND CEMENTING PROGRAM

SIZE OF HOLE	SIZE OF CASING	WEIGHT PER FOOT	SETTING DEPTH	QUANTITY OF CEMENT
12 1/4"	8 5/8"	24# (J-55)	225'	225 sxs (405 CF) Class B cement
7 7/8"	4 1/2"	11.6# (N-80)	7335'	1st stage: 750 sxs (1350 CF) 50/50 pozmix 2nd stage: 505 sxs (909 CF) 40/60 pozmix, 12% gel 40 sxs (72 CF) Class B cement

Drill 230' of 12 1/4" surface hole. Set 225' of 8 5/8" casing. Cement to surface with 225 sxs (405 CF) cement. Using a water base mud, (15% oil), and Schaeffer standard doublegate hydraulic BOP, drill 7 7/8" hole to 7335' to test the Dakota formation. Logging Program: Run Dil, Caliper, GR, SP, FDC-CNL from T. D. to surface.

Estimated Tops:

Ojo Alamo	2358'	Point Lookout	4926'	Dakota 'A'	7034'
Pictured Cliffs	2813'	Gallup	5626'	Dakota 'D'	7154'
Chacra	3153'	Tocito	6636'	Burro Canyon	7260'
Cliff House	4319'	Greenhorn	6942'		

IN ABOVE SPACE DESCRIBE PROPOSED PROGRAM: If proposal is to deepen or plug back, give data on present productive zone and proposed new productive zone. If proposal is to drill or deepen directionally, give pertinent data on subsurface locations and measured and true depths. Give blowout preventer program, if any.

24.

SIGNED

Monte Anderson

TITLE

Geologist

JUN 04 1985

DATE

May 1, 1985

(This space for Federal or State office use)

This action is subject to technical and procedural review pursuant to 43 CFR 3165.3 and appeal pursuant to 43 CFR 3165.4.

REVAL DATE

OIL CON. DIV. APPROVED
DIST. 3 AS AMENDED

DATE MAY 31 1985

78/11 Stan McKee

M. MILLENBACH
AREA MANAGER

*See Instructions On Reverse Side

All distances must be from the outer boundaries of the Section.

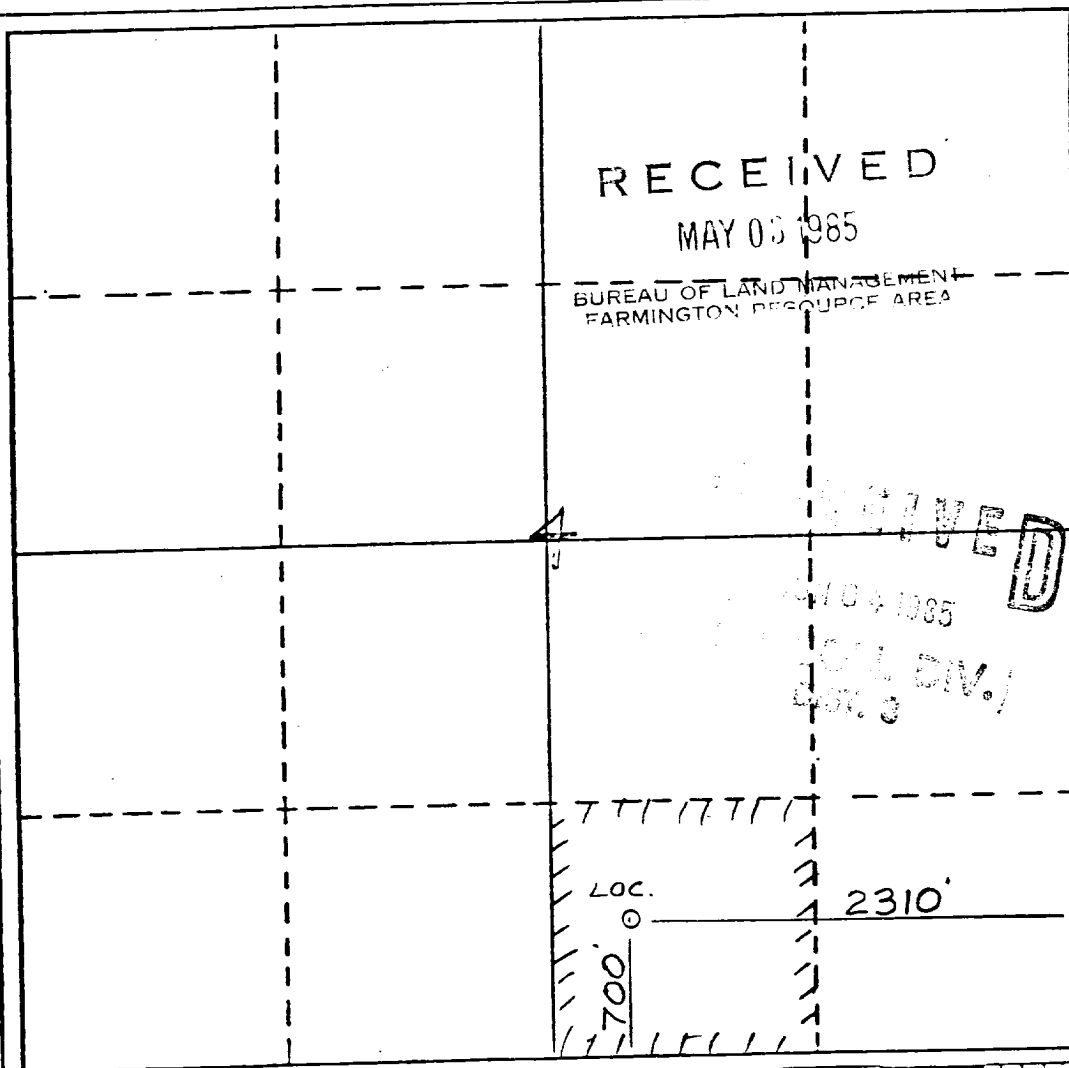
Operator CHACE OIL COMPANY		Lease JICARILLA		Well No. 361-6
Unit Letter O	Section 4	Township 23 NORTH	Range 4 WEST	County RIO ARRIBA
Actual Footage Location of Well: 700 feet from the SOUTH line and 2310 feet from the EAST line				
Ground Level Elev. 7136	Producing Formation Gallup - Dakota	Pool S. Lindrith Gallup - Dakota	Dedicated Acreage: 40 Acres	

1. Outline the acreage dedicated to the subject well by colored pencil or hatchure marks on the plat below.
2. If more than one lease is dedicated to the well, outline each and identify the ownership thereof (both as to working interest and royalty).
3. If more than one lease of different ownership is dedicated to the well, have the interests of all owners been consolidated by communitization, unitization, force-pooling, etc?

☐ Yes ☐ No If answer is "yes," type of consolidation _____

If answer is "no," list the owners and tract descriptions which have actually been consolidated. (Use reverse side of this form if necessary.) _____

No allowable will be assigned to the well until all interests have been consolidated (by communitization, unitization, forced-pooling, or otherwise) or until a non-standard unit, eliminating such interests, has been approved by the Division.



CERTIFICATION

I hereby certify that the information contained herein is true and complete to the best of my knowledge and belief.

Monte Anderson

Name

Geologist

Position

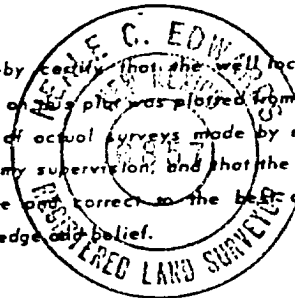
Chace Oil Company

Company

3-29-85

Date

I hereby certify that the well location shown on this plat was plotted from field notes of actual surveys made by me or under my supervision, and that the same is true and correct to the best of my knowledge and belief.



Date Surveyed

3-21-85

Registered Professional Engineer
and/or Land Surveyor

F. C. Edwards

Certificate No.

6857

