

UNITED STATES
DEPARTMENT OF THE INTERIOR
BUREAU OF LAND MANAGEMENT

APPLICATION FOR PERMIT TO DRILL, DEEPEN, OR PLUG BACK

1a. TYPE OF WORK

DRILL ☒

DEEPEN ☐

PLUG BACK ☐

b. TYPE OF WELL

OIL
WELL ☒

GAS
WELL ☐

OTHER

SINGLE
ZONE ☐

MULTIPLE
ZONE ☒

2. NAME OF OPERATOR

Chace Oil Company, Inc.

3. ADDRESS OF OPERATOR

313 Washington, SE, Albuquerque, New Mexico 87108

4. LOCATION OF WELL (Report location clearly and in accordance with any State requirements.)*

At surface

1785' FNL & 840' FWL

At proposed prod. zone Unit 'E', Section 9, T23N, R4W

14. DISTANCE IN MILES AND DIRECTION FROM NEAREST TOWN OR POST OFFICE*

17 miles W-SW of Lindrith, New Mexico

15. DISTANCE FROM PROPOSED*

LOCATION TO NEAREST
PROPERTY OR LEASE LINE, FT. 840' from lease line
(Also to nearest drlg. unit line, if any) 480' from unit line

16. NO. OF ACRES IN LEASE

1920

17. NO. OF ACRES ASSIGNED
TO THIS WELL

40

18. DISTANCE FROM PROPOSED LOCATION*
TO NEAREST WELL, DRILLING COMPLETED,
OR APPLIED FOR, ON THIS LEASE, FT.

1600'

19. PROPOSED DEPTH

7228'

20. ROTARY OR CABLE TOOLS

Rotary

21. ELEVATIONS (Show whether DF, RT, GR, etc.)

7035' GR

DRILLING OPERATIONS AUTHORIZED ARE
SUBJECT TO COMPLIANCE WITH ATTACHED

22. APPROX. DATE WORK WILL START*

5/31/85

23. PROPOSED CASING AND CEMENTING PROGRAM

SIZE OF HOLE	SIZE OF CASING	WEIGHT PER FOOT	SETTING DEPTH	
12 1/4"	8 5/8"	24# (J-55)	225'	225 sxs (405 CF) Class B cement
7 7/8"	4 1/2"	11.6# (N-80)	7228'	1st stage: 750 sxs (1350 CF) 50/50 pozmix. 2nd stage: 505 sxs (909 CF) 40/60 pozmix, 12% gel 40 sxs (72 CF) Class B cement

Drill 230' of 12 1/4" surface hole. Set 225' of 8 5/8" casing. Cement to surface with 225 sxs (405 CF) cement. Using a water base mud (15% oil) and Schaeffer standard doublegate hydraulic BOP, drill 7 7/8 hole to 7228' to test the Dakota formation.
Logging Program: Run Dil, Caliper, Gr, SP, FDC-CNL from T. D. to surface.

Estimated Tops:

Ojo Alamo	2217'	Point Lookout	4831'	Dakota 'A'	6951'
Pictured Cliffs	2693'	Gallup	5496'	Dakota 'B'	7049'
Chacra	3031'	Tocito	6524'	Burro Canyon	7153'
Cliff House	4195'	Greenhorn	6845'		

IN ABOVE SPACE DESCRIBE PROPOSED PROGRAM: If proposal is to deepen or plug back, give data on present productive zone and proposed new productive zone. If proposal is to drill or deepen directionally, give pertinent data on subsurface locations and measured and true vertical depths. Give blowout preventer program, if any.

24.

SIGNED

Monte Anderson

TITLE

Geologist

DATE

4/10/85

(This space for Federal or State office use)

PERMIT NO.

APPROVED BY

CONDITIONS OF APPROVAL, IF ANY:

RECEIVED
JUN 03 1985

APPROVED
AS AMENDED

DATE MAY 30 1985

M. MILLENBACH
AREA MANAGER

*See Instructions On Reverse Side

All distances must be from the outer boundaries of the Section.

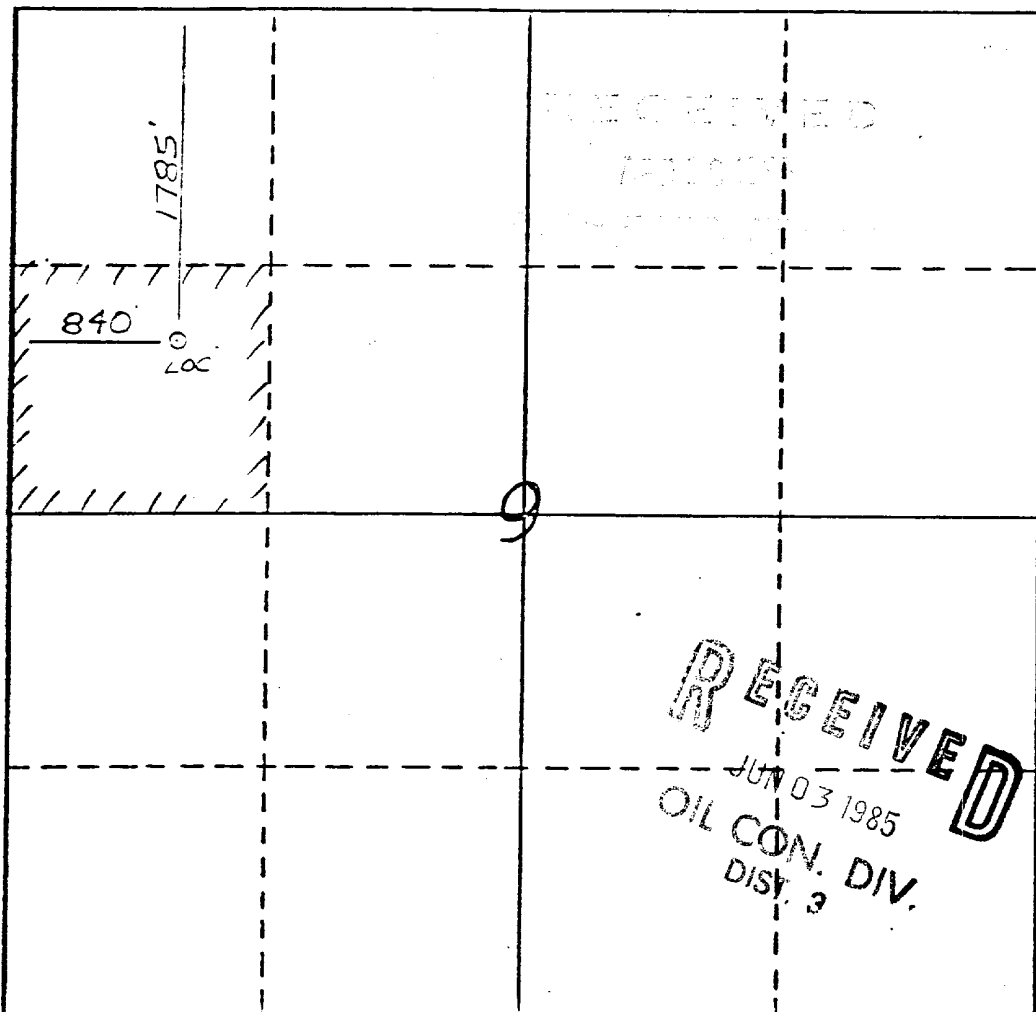
Operator CHACE OIL COMPANY		Lease JICARILLA		Well No. 71-42	
Unit Letter E	Section 9	Township 23 NORTH	Range 4 WEST	County RIO ARriba	
Actual Footage Location of Well: 1785 feet from the NORTH line and 840 feet from the WEST line					
Ground Level Elev. 7035'	Producing Formation Gallup- Dakota	Pool S. Lindrith Gallup- Dakota	Dedicated Acreage: 40 Acres		

1. Outline the acreage dedicated to the subject well by colored pencil or hatchure marks on the plat below.
2. If more than one lease is dedicated to the well, outline each and identify the ownership thereof (both as to working interest and royalty).
3. If more than one lease of different ownership is dedicated to the well, have the interests of all owners been consolidated by communitization, unitization, force-pooling, etc?

☐ Yes ☐ No If answer is "yes," type of consolidation _____

If answer is "no," list the owners and tract descriptions which have actually been consolidated. (Use reverse side of this form if necessary.) _____

No allowable will be assigned to the well until all interests have been consolidated (by communitization, unitization, forced-pooling, or otherwise) or until a non-standard unit, eliminating such interests, has been approved by the Division.



CERTIFICATION

I hereby certify that the information contained herein is true and complete to the best of my knowledge and belief.

Monte Anderson

Name

Geologist

Position

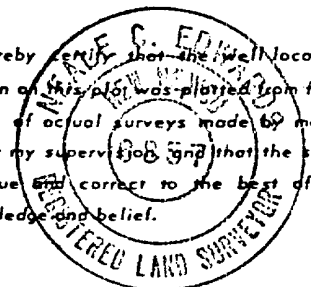
Chace Oil Company

Company

3-29-85

Date

I hereby certify that the well location shown on this plat was plotted from field notes of actual surveys made by me or under my supervision and that the same is true and correct to the best of my knowledge and belief.



Date Surveyed

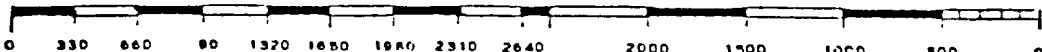
3-21-85

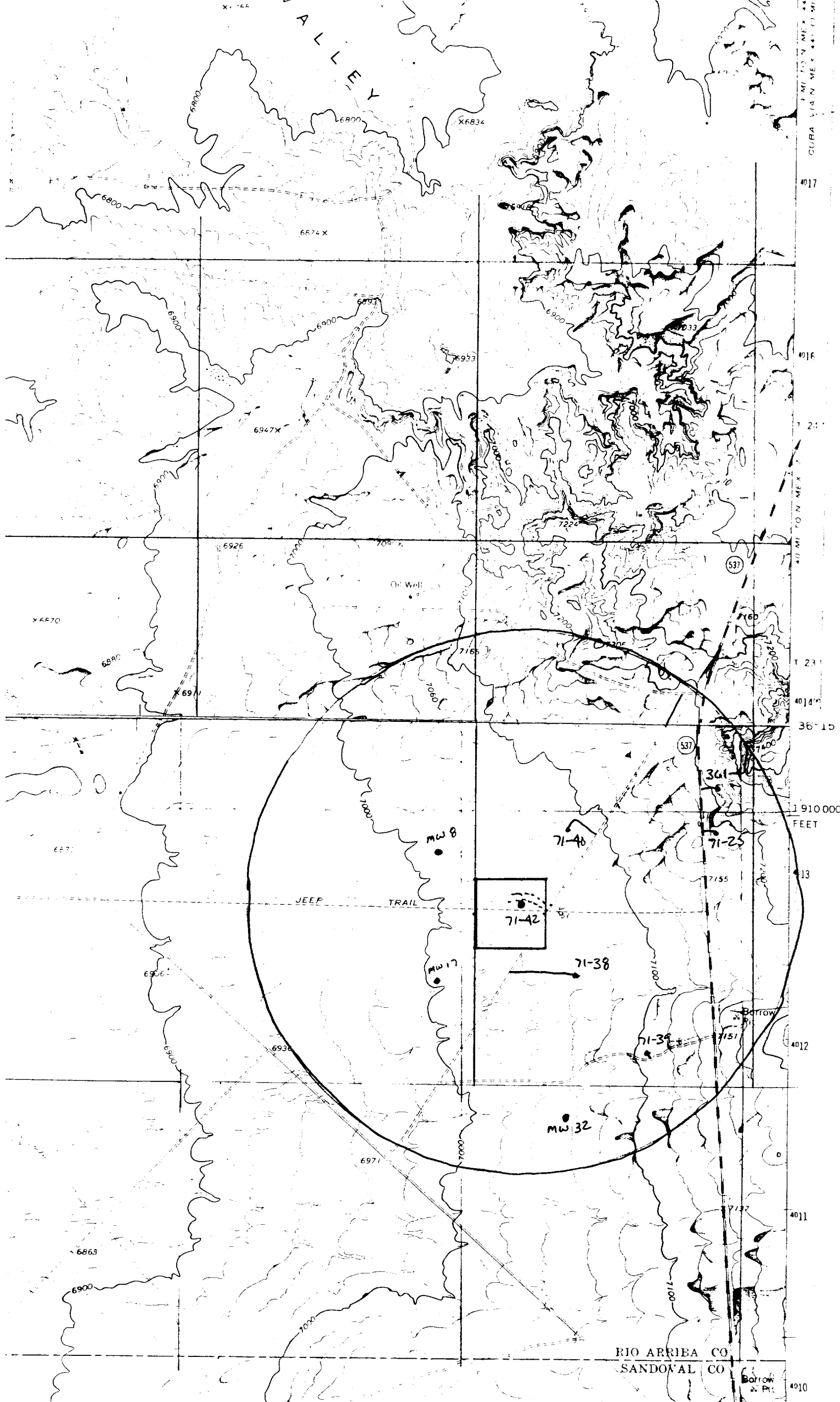
Registered Professional Engineer and/or Land Surveyor

M. C. Edwards

Certificate No.

6857





RIO ARRIEA CO
SANDOVAL CO

BOTTOM
2. Pts