

UNITED STATES
DEPARTMENT OF THE INTERIOR
BUREAU OF LAND MANAGEMENT

APPLICATION FOR PERMIT TO DRILL, DEEPEN, OR PLUG BACK

1a. TYPE OF WORK
DRILL ☒ DEEPEN ☐ PLUG BACK ☐

b. TYPE OF WELL
Oil Well ☒ GAS WELL ☐ OTHER ☐ Comingled ☐ SINGLE ZONE ☐ MULTIPLE ZONE ☒

2. NAME OF OPERATOR
W. B. Martin & Associates

3. ADDRESS OF OPERATOR
709 N. Butler Farmington, N.M. 87401

4. LOCATION OF WELL (Report location clearly and in accordance with any State requirements.)
At proposed prod. zone

790' FSL and 790' FWL

14. DISTANCE IN MILES AND DIRECTION FROM NEAREST TOWN OR POST OFFICE*
20 miles NW of Cuba, N.M.

15. DISTANCE FROM PROPOSED LOCATION TO NEAREST PROPERTY OR LEASE LINE, FT.
(Also to nearest drlg. unit line, if any.) 790'

18. DISTANCE FROM PROPOSED LOCATION TO NEAREST WELL, DRILLING, COMPLETED, OR APPLIED FOR, ON THIS LEASE, FT.
4590'

21. ELEVATIONS (Show whether DF, RT, GR, etc.)
6786' GR

PROPOSED CASING AND CEMENTING PROGRAM

SIZE OF HOLE	SIZE OF CASING	WEIGHT PER FOOT	SETTING DEPTH
12 1/4"	9 5/8"	32#	250'
8 3/4"	7"	23#	5000'
6 1/4"	4 1/2"	11.6#	6660'

PROPOSED OPERATION

1. Drill 12 1/4" hole to 250' with spud mud. Run and cement 9 5/8" casing. WOC 12 hours. Pressure test BOP to 1000 PSI.
2. Drill 8 3/4" hole to 5000' with low solids, low water loss mud. Run and cement 7" casing. WOC 12 hours. Pressure test BOP to 1000 PSI.
3. Drill 6 1/4" hole to 6660' with air. Run and cement 4 1/2" casing.

IN ABOVE SPACE DESCRIBE PROPOSED PROGRAM: If proposal is to deepen or plug back, give data on present productive zone and proposed new productive zone. If proposal is to drill or deepen directionally, give pertinent data on subsurface locations and measured and true vertical depths. Give blowout preventer program, if any.

SIGNED W.B. Martin TITLE Operator

(This space for Federal or State office use)

PERMIT NO. _____ APPROVAL DATE _____

APPROVED BY _____ TITLE _____

CONDITIONS OF APPROVAL, IF ANY:

NMOCC

*See Instructions On Reverse Side

5. LEASE DESIGNATION AND SERIAL NO.
Jicarilla Contract #

6. IF IN AN ALLOTTEE OR TRIBE NAME

Jicarilla Apache

8. FARM OR LEASE NAME

9. WELL NO.

79 Martin-Whittaker

10. FIELD AND POOL OR WILDCAT

SW 1/4 Sec. 12 T. 23N R. 5W

11. SEC. T. R. M. OR BLK. AND SURVEY OR AREA

12. COUNTY OR PARISH 13. STATE

Rio Arriba N.M.

16. NUMBER OF ACRES IN LEASE

2560

17. NUMBER OF ACRES ADJACENT TO THIS WELL

40/40

20. ROTARY OR CABLE TOOLS

Rotary

22. APPROX. DATE WORK WILL START

Dependant upon approval

This action is subject to administrative appeal pursuant to 30 CFR 290.

RECEIVED

JUL 10 1985

OIL CON. DIV.

DIST. 3 APPROVED

AS AMENDED

JUL 9 1985

(SGD.) MAT MILLENBACH

AREA MANAGER
FARMINGTON RESOURCE AREA

NEW MEXICO OIL CONSERVATION COMMISSION
WELL LOCATION AND ACREAGE DEDICATION PLAT

Form C-102
Supersedes C-128
Effective 1-1-55

All distances must be from the outer boundaries of the Section.

Operator W. B. MARTIN & ASSOCIATES			Lease MARTIN-WHITAKER		Well No. 79 79
Unit Letter M	Section 11	Township 23N	Range 5W	County Rio Arriba	
Actual Footage Location of Well: 790 feet from the South line and 790 feet from the West line					
Ground Level Elev. 6786	Producing Formation Gallup-Dakota	Pool S. Lindrith Gallup-Dakota	Dedicated Acreage: 40 Acres		EXT

1. Outline the acreage dedicated to the subject well by colored pencil or hatchure marks on the plat below.
2. If more than one lease is dedicated to the well, outline each and identify the ownership thereof (both as to working interest and royalty).
3. If more than one lease of different ownership is dedicated to the well, have the interests of all owners been consolidated by communitization, unitization, force-pooling, etc?

☐ Yes ☐ No If answer is "yes," type of consolidation _____

If answer is "no," list the owners and tract descriptions which have actually been consolidated. (Use reverse side of this form if necessary.) _____

No allowable will be assigned to the well until all interests have been consolidated (by communitization, unitization, forced-pooling, or otherwise) or until a non-standard unit, eliminating such interests, has been approved by the Commission.

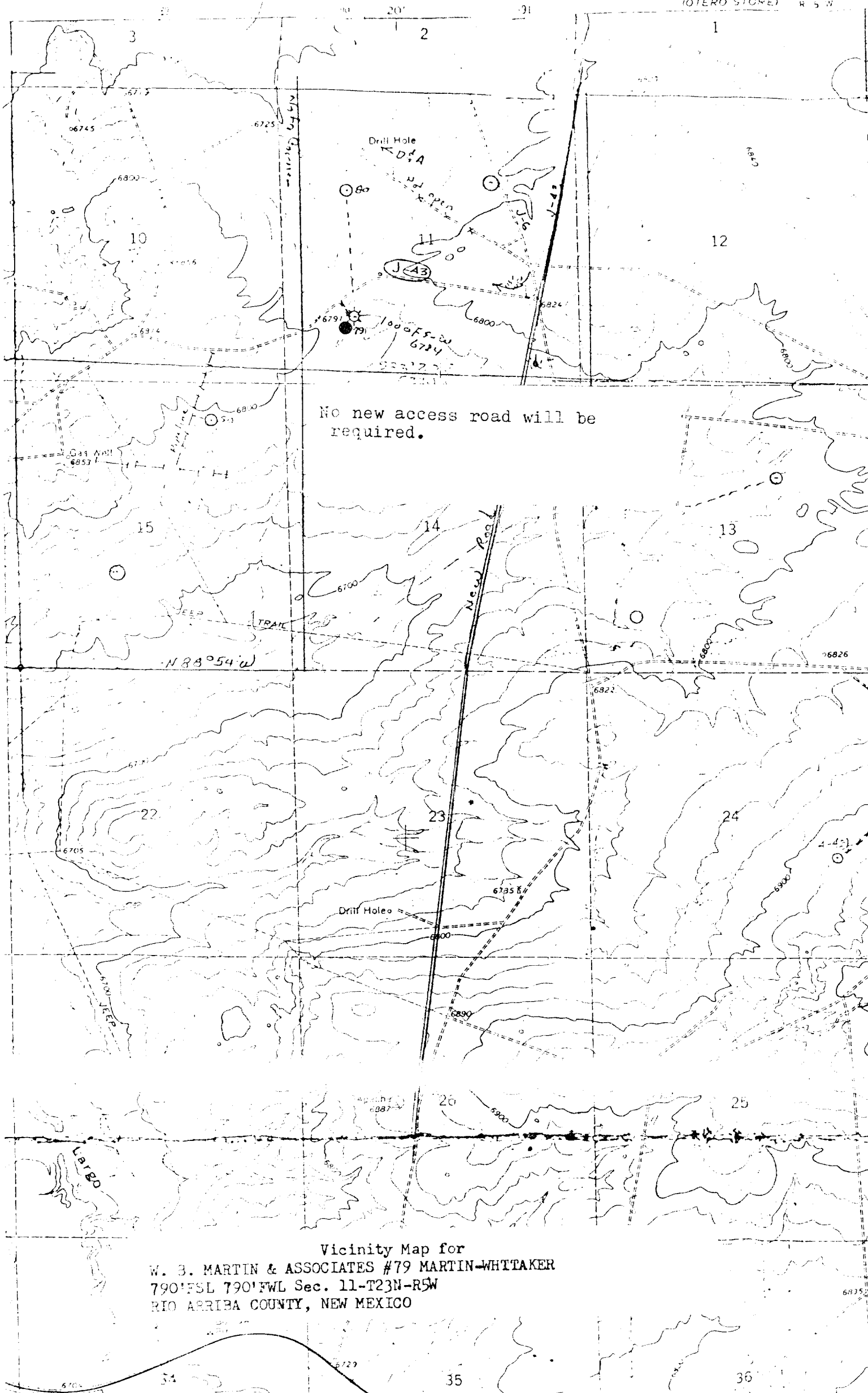
Sec.	<p align="center">RECEIVED JUL 10 1985 OIL CON. DIV. DIST. 3</p>
	<p align="center">11 RECEIVED MAR 13 1985 BUREAU OF LAND MANAGEMENT</p>

790'

720'

Scale: 1"=1000'

CERTIFICATION	
I hereby certify that the information contained herein is true and complete to the best of my knowledge and belief.	
Name <i>W.B. Martin Jr.</i>	
Position President	
Company W.B. Martin & Associates	
Date 3/8/85	
I hereby certify that the well location shown on this plat was plotted from field notes of actual surveys made by me or under my supervision, and that the same is true and correct to the best of my knowledge and belief.	
Date Surveyed March 3, 1985	
Registered Professional Engineer and Land Surveyor <i>Fred B. Kerr Jr.</i>	
Certificate No. 3950	



Vicinity Map for
W. B. MARTIN & ASSOCIATES #79 MARTIN-WHTAKER
790'FSL 790'FWL Sec. 11-T23N-R5W
RIO ARriba COUNTY, NEW MEXICO