

UNITED STATES
DEPARTMENT OF THE INTERIOR
BUREAU OF LAND MANAGEMENT

APPLICATION FOR PERMIT TO DRILL, DEEPEN, OR PLUG BACK

1a. TYPE OF WORK

DRILL ☒

DEEPEN ☐

PLUG BACK ☐

b. TYPE OF WELL

OIL
WELL ☒

GAS
WELL ☐

OTHER ☒ Comingled

SINGLE
ZONE ☐

MULTIPLE
ZONE ☐

2. NAME OF OPERATOR

W.B. Martin & Associates

3. ADDRESS OF OPERATOR

709 N. Butler Farmington, N.M. 87401

4. LOCATION OF WELL (Report location clearly and in accordance with any State requirements.)

At surface

990' FSL and 1785' FEL

At proposed prod. zone

14. DISTANCE IN MILES AND DIRECTION FROM NEAREST TOWN OR POST OFFICE

20 miles W of Cuba, N.M.

15. DISTANCE FROM PROPOSED LOCATION TO NEAREST PROPERTY OR LEASE LINE, FT.

(Also to nearest dog-unit line, if any)

990'

16. NO. OF ACRES IN LEASE

2560

17. NO. OF ACRES ASSIGNED TO THIS WELL

40 / 40

18. DISTANCE FROM PROPOSED LOCATION TO NEAREST WELL DRILLING COMPLETED OR APPLIED FOR, ON THIS LEASE, FT.

350'

19. PROPOSED DEPTH

6520'

20. ROTARY OR CABLE TOOLS

Rotary

21. ELEVATIONS (Show surface, top of hole, etc.)

6594' GR

22. APPROX. DATE WORK WILL START

Dependant upon approval

DRILLING OPERATIONS AUTHORIZED ARE
SUBJECT TO COMPLIANCE WITH ATTACHED
"GENERAL REQUIREMENTS"

PROPOSED CASING AND CEMENTING PROGRAM

This action is subject to administrative
appeal pursuant to 30 CFR 290.

SIZE OF HOLE	SIZE OF CASING	WEIGHT PER FOOT	SETTING DEPTH	
12 1/4"	9 5/8"	32#	250'	206.50 ft ³
7 7/8"	5 1/2"	17#	6520'	1500.00 ft ³

PROPOSED OPERATIONS

1. Drill 12 1/4" hole to 250' with spud mud. Run and cement 9 5/8" casing. WOC 12 hours. Pressure test BOP to 1000 PSI.
2. Drill 7 7/8" hole to 6520' with low solids, low water loss mud. Run and cement 5 1/2" casing.

RECEIVED
AUG 28 1985
OIL CON. DIV

IN ABOVE SPACE DESCRIBE PROPOSED PROGRAM: If proposal is to deepen or plug back, give data on present productive zone and proposed new productive zone. If proposal is to drill or deepen directionally, give pertinent data on subsurface locations and measured and true vertical depths. Give blowout preventer program, if any.

24

SIGNED

W.B. Martin

TITLE Operator

DATE 1/16/85

(This space for Federal or State office use)

APPROVED
AS AMENDED

PERMIT NO.

APPROVAL DATE

APPROVED BY

TITLE

DATE

CONDITIONS OF APPROVAL, IF ANY:

AUG 26 1985
(SGD.) MAT MILLENBACH
M. MILLENBACH
AREA MANAGER

*See Instructions On Reverse Side

NEW MEXICO OIL CONSERVATION COMMISSION
WELL LOCATION AND ACREAGE DEDICATION PLAT

Form C-102
Supersedes C-128
Effective 1-1-65

All distances must be from the outer boundaries of the Section.

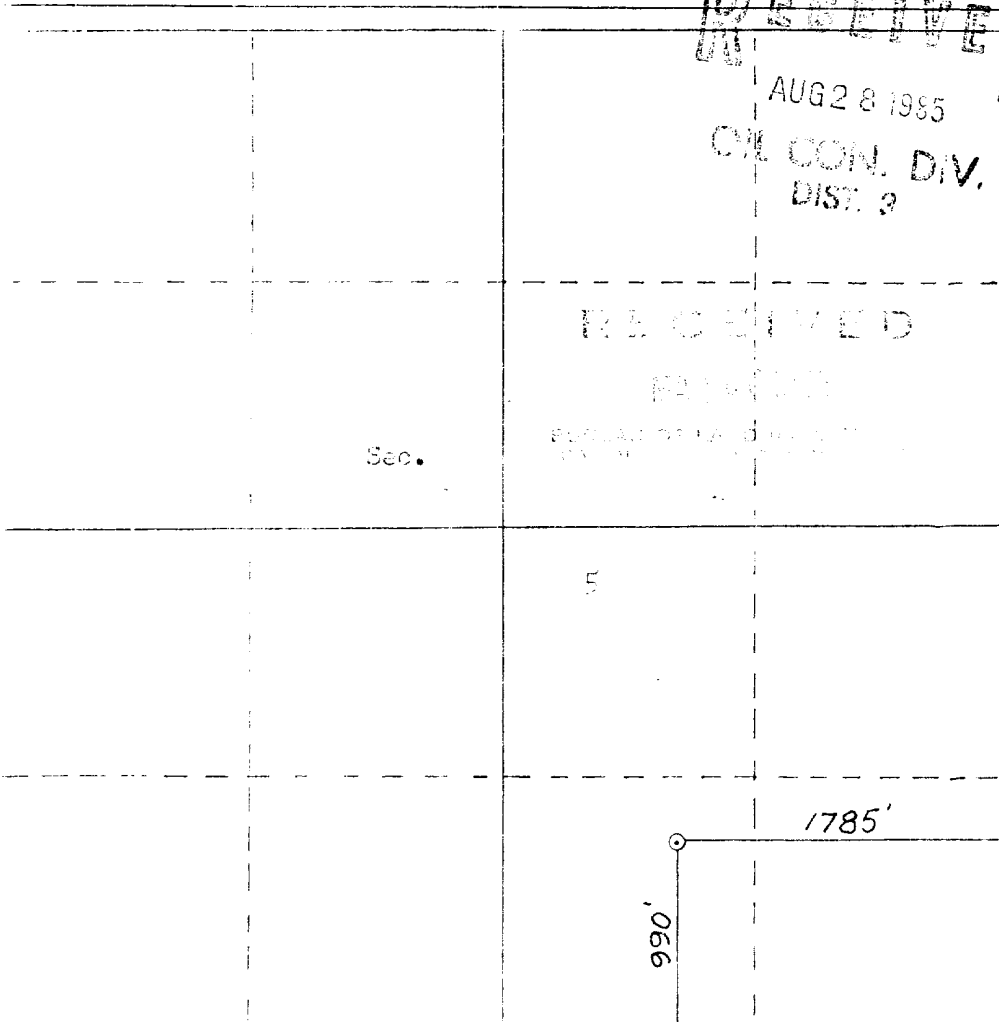
W.B. MARTIN & ASSOCIATES, INC.			Lease MARTIN-WHITTAKER		Well No. 75
Section 0	Section 5	Township 23N	Range 5W	County Rio Arriba	
Actual Footage Location of Well: 990 feet from the South line and 1785 feet from the East line					
Ground Level Elev. 7591	Producing Formation Garfield Dakota	Pool Wildcat	Dedicated Acreage: 40 Acres		

1. Outline the acreage dedicated to the subject well by colored pencil or hatchure marks on the plat below.
2. If more than one lease is dedicated to the well, outline each and identify the ownership thereof (both as to working interest and royalty).
3. If more than one lease of different ownership is dedicated to the well, have the interests of all owners been consolidated by communitization, unitization, force-pooling, etc?

☐ Yes ☐ No If answer is "yes," type of consolidation _____

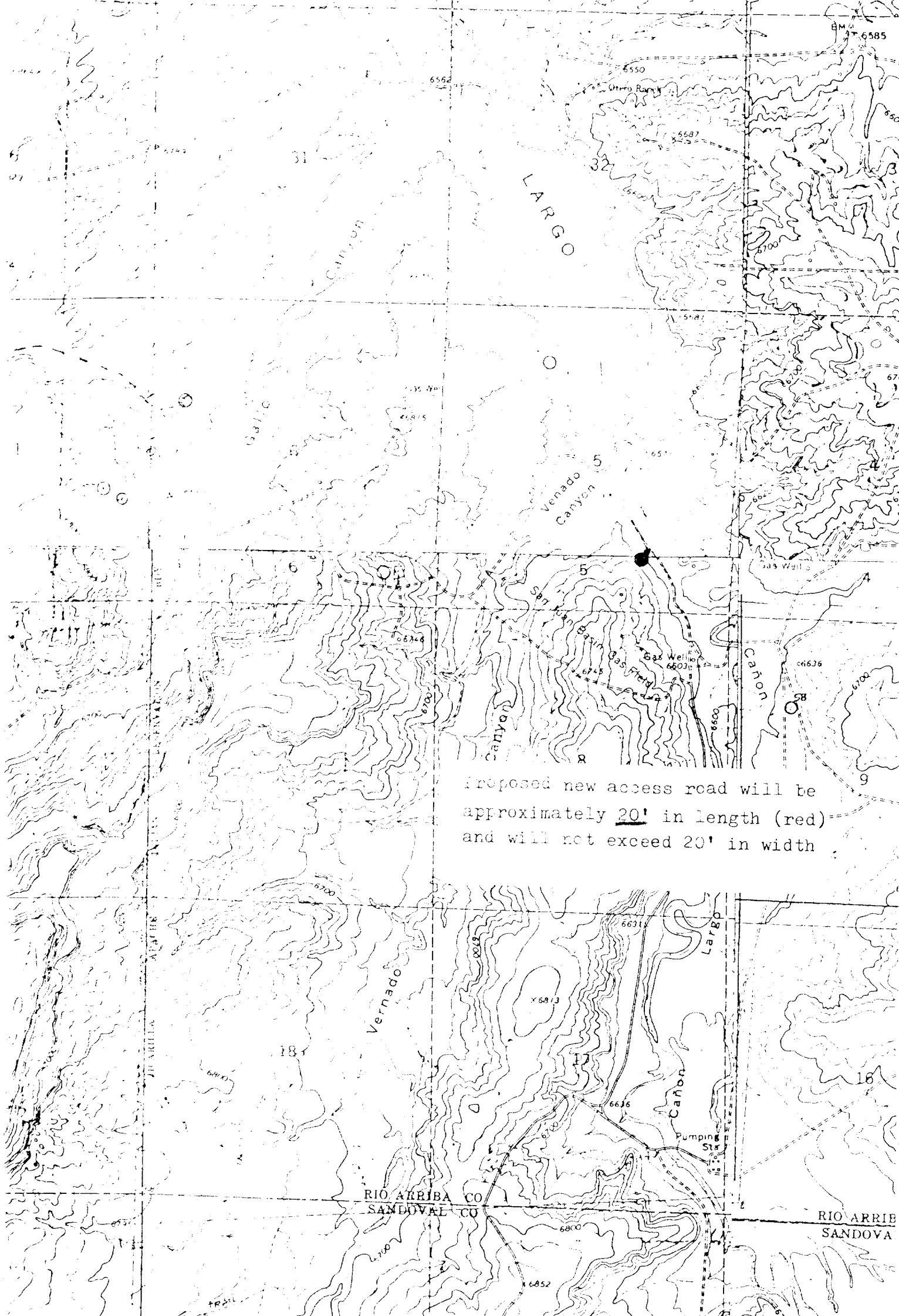
If answer is "no," list the owners and tract descriptions which have actually been consolidated. (Use reverse side of this form if necessary.) _____

No allowable will be assigned to the well until all interests have been consolidated (by communitization, unitization, forced-pooling, or otherwise) or until a non-standard unit, eliminating such interests, has been approved by the Commission.



Scale: 1"=1000'

CERTIFICATION	
I hereby certify that the information contained herein is true and complete to the best of my knowledge and belief.	
Name	W.B. Martin & Associates
Position	President
Company	W.B. Martin & Associates
Date	2/6/85
I hereby certify that the well location shown on this plat was plotted from field notes of actual surveys made by me or under my supervision, and that the same is true and correct to the best of my knowledge and belief.	
Date Surveyed	2-6-85
Registered Professional Engineer and Land Surveyor	William E. Mahne II
Certificate No.	8466



Proposed new access road will be approximately 20' in length (red) and will not exceed 20' in width

Vicinity Map for
W. B. MARTIN & ASSOCIATES #75 MARTIN-WHITAKER
990'FSL 1735'FEL Sec. 5-T23N-R5W
RIO ARRIBA COUNTY, NEW MEXICO