

UNITED STATES
DEPARTMENT OF THE INTERIOR
BUREAU OF LAND MANAGEMENT

APPLICATION FOR PERMIT TO DRILL, DEEPEN, OR PLUG BACK

1a. TYPE OF WORK

DRILL ☒

DEEPEN ☐

PLUG BACK ☐

b. TYPE OF WELL

OIL
WELL ☒

GAS
WELL ☐

OTHER

SINGLE
ZONE ☐

MULTIPLE
ZONE ☐

2. NAME OF OPERATOR

JACK A. COLE

3. ADDRESS OF OPERATOR

P. O. BOX 191, FARMINGTON, N.M. 87499

4. LOCATION OF WELL (Report location clearly and in accordance with any State requirements.)

At surface
1650' FSL, 660' FWL

At proposed prod. zone SAME

14. DISTANCE IN MILES AND DIRECTION FROM NEAREST TOWN OR POST OFFICE

4 MILES FROM COUNSELORS TRADING POST

15. DISTANCE FROM PROPOSED*

LOCATION TO NEAREST
PROPERTY OR LEASE LINE, FT.
(Also to nearest drilg. unit line, if any)

660'

18. DISTANCE FROM PROPOSED LOCATION*
TO NEAREST WELL, DRILLING, COMPLETED,
OR APPLIED FOR, ON THIS LEASE, FT.

1540'

16. NO. OF ACRES IN LEASE

1940-2461.69

19. PROPOSED DEPTH

5650'

17. NO. OF ACRES ASSIGNED
TO THIS WELL

160

20. ROTARY OR CABLE TOOLS

ROTARY

21. ELEVATIONS (Show whether DF, RT, GR, etc.)

6824' GR

DRILLING OPERATIONS AUTHORIZED ARE
SUBJECT TO COMPLIANCE WITH ATTACHED

23. "GENERAL REQUIREMENTS"

"PROPOSED CASING AND CEMENTING PROGRAM"

22. APPROX. DATE WORK WILL START*

AUGUST 20, 1985

This action is subject to technical and
procedural review pursuant to 43 CFR 3165.3
and appeal pursuant to 43 CFR 3165.4.
QUANTITY OF CEMENT

SIZE OF HOLE	SIZE OF CASING	WEIGHT PER FOOT	SETTING DEPTH	QUANTITY OF CEMENT
12-1/4"	8-5/8"	24.0 J-55	250'	295 CU. FT.
7-7/8"	4-1/2"	10.50 K-55	5650'	TO BE DETERMINED AFTER LOGGING

ALL PRODUCING INTERVALS IN GALLUP FORMATION WILL BE STIMULATED AS NECESSARY.

EXHIBITS:

"A" LOCATION AND ELEVATION PLOT
"B" TEN POINT COMPLIANCE PROGRAM
"C" BLOWOUT PREVENTOR DIAGRAM
"D" MULTI-POINT REQUIREMENTS OF APD

"E" ACCESS ROAD TO LOCATION
"F" DRILL RIG LAYOUT
"G" FRACTURING PROGRAM LAYOUT
"H" LOCATION PROFILE

THE GAS FOR THIS WELL IS COMMITTED.

THE SW 1/4, 160 ACRES, SECTION 8-T23N-R6W IS DEDICATED TO THIS WELL

IN ABOVE SPACE DESCRIBE PROPOSED PROGRAM: If proposal is to deepen or plug back, give data on present productive zone and proposed new productive zone. If proposal is to drill or deepen directionally, give pertinent data on subsurface locations and measured and true vertical depths. Give blowout preventer program, if any.

24. SIGNED Debra J. Blum TITLE PRODUCTION SUPERINTENDENT DATE JULY 25, 1985

(This space for Federal or State office use)

PERMIT NO.

APPROVAL DATE

APPROVED BY

CONDITIONS OF APPROVAL, IF ANY:

TITLE

NMOCC

See Instructions On Reverse Side

APPROVED
AS AMENDED

SEP 04 1985

Stan McKee
M. MILLENBACH
AREA MANAGER

Form C-102
Supersedes C-128
Effective 1-1-65

Operator JACK A. COLE		Lease MARCUS "A"		Well No. 1
Unit Letter L	Section 8	Township 23N	Range 6W	County Rio Arriba
Actual Footage Location of Well: 1650 feet from the South line and 660 feet from the West line				
Ground Level Elev. 6824	Producing Formation GALLUP	Pool COUNSELORS GALLUP-DAKOTA	Dedicated Acreage: 160 Acres	

- No allowable will be assigned to the well until all interests have been consolidated (by communitization, unitization, forced-pooling, or otherwise) or until a non-standard unit, eliminating such interests, has been approved by the Commission.

Fd.

Sec.

Fd.

660'

1650'

Fd.

RECEIVED

JUG 02 1985

BUREAU OF LAND MANAGEMENT

WYOMING RESOURCE AREA

8

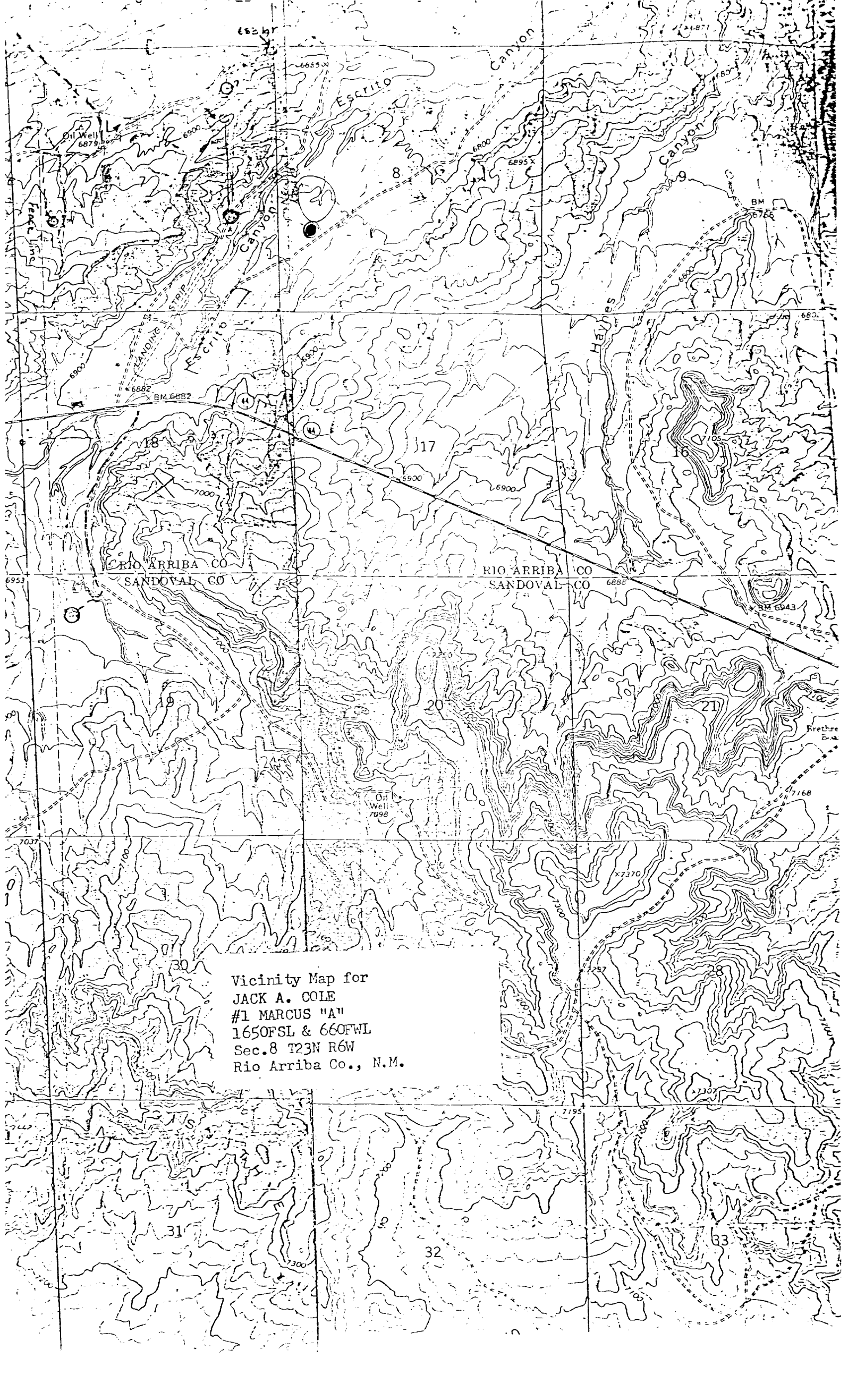
RECEIVED

SEP 06 1985

OIL CON. DIV.

DIST. 3

7-17-85
Date Surveyed
WILLIAM E. MAHNEK, II
Registered Professional Engineer
and Land Surveyor
#8466
REGISTERED PROFESSIONAL LAND SURVEYOR
Certified Professional



Vicinity Map for
JACK A. COLE
#1 MARCUS "A"
1650FSL & 660FWL
Sec. 8 T23N R6W
Rio Arriba Co., N.M.