

UNITED STATES  
DEPARTMENT OF THE INTERIOR  
BUREAU OF LAND MANAGEMENT

APPLICATION FOR PERMIT TO DRILL, DEEPEN, OR PLUG BACK

1a. TYPE OF WORK

DRILL ☒

DEEPEN ☐

PLUG BACK ☐

b. TYPE OF WELL

OIL  
WELL ☐

GAS  
WELL ☒

OTHER

SINGLE  
ZONE ☒

MULTIPLE  
ZONE ☐

2. NAME OF OPERATOR

Robert L. Bayless

3. ADDRESS OF OPERATOR

P.O. Box 168, Farmington, NM 87499

4. LOCATION OF WELL (Report location clearly and in accordance with applicable requirements.)

At surface

1450' FSL & 1450' FEL

At proposed prod. zone

same

14. DISTANCE IN MILES AND DIRECTION FROM NEAREST TOWN OR POST OFFICE

BUREAU OF LAND MANAGEMENT  
FARMINGTON RESOURCE AREA

15. DISTANCE FROM PROPOSED\*

LOCATION TO NEAREST  
PROPERTY OR LEASE LINE, FT.  
(Also to nearest drlg. unit line, if any)

18. DISTANCE FROM PROPOSED LOCATION\*  
TO NEAREST WELL, DRILLING, COMPLETED,  
OR APPLIED FOR, ON THIS LEASE, FT.

21. ELEVATIONS (Show whether DF, RT, GR, etc.)

7092' GL

23. PROPOSED CASING AND CEMENTING PROGRAM

SIZE OF HOLE	SIZE OF CASING	WEIGHT PER FOOT	SETTING DEPTH
9"	7"	23#/ft	90'
6 1/4"	2-7/8"	6.5#/ft	2765'

16. NO. OF ACRES IN LEASE

1280

19. PROPOSED DEPTH

2765'

17. NO. OF ACRES ASSIGNED  
TO THIS WELL

160

20. ROTARY OR CABLE TOOLS

0 - TD

22. APPROX. DATE WORK WILL START\*

ASAP

This action is subject to technical and  
procedural review pursuant to 43 CFR 3165.3  
and appeal pursuant to 43 CFR 3165.4.  
QUANTITY OF CEMENT

24 ft<sup>3</sup> Class B, circ. to surface  
218 ft<sup>3</sup> Class B

Will drill 9" hole to 90' and set 90' 7", 23#/ft J-55 used casing w/24 ft<sup>3</sup> Class B cement, circulated to surface. Will drill 6 1/4" hole to 2765' and run 2765' of 2-7/8" 6.5#/ft J-55 EUE casing and cement w/218 ft<sup>3</sup> Class B cement circulated above the Ojo Alamo. Circulating medium will be clear water, natural mud and water loss control additives. No abnormal pressures or temperatures are anticipated. Will run Induction and Density logs. Blowout preventer schematic is attached. The gas from this formation is dedicated to a gas contract.

ESTIMATED TOPS: Surface - Clays and Sand  
1524' - Ojo Alamo  
2265' - Fruitland  
2613' - Pictured Cliffs  
2765' - T.D.

RECEIVED

DEC 12 1985

OIL CON. DIV.

DIST. 3

IN ABOVE SPACE DESCRIBE PROPOSED PROGRAM: If proposal is to deepen or plug back, give data on present productive zone and proposed new productive zone. If proposal is to drill or deepen directionally, give pertinent data on subsurface locations and measured and true vertical depths. Give blowout preventer program, if any.

24.

SIGNED

TITLE Operator

DATE 10/17/85

(This space for Federal or State office use)

PERMIT NO.

APPROVAL DATE

APPROVED  
AS AMENDED

APPROVED BY

TITLE

CONDITIONS OF APPROVAL, IF ANY:

DEC 10 1985

/s/ J. Stan McKee

M. MILLENBACH  
AREA MANAGER

NMOCC

\*See Instructions On Reverse Side

**NEW MEXICO OIL CONSERVATION COMMISSION  
WELL LOCATION AND ACREAGE DEDICATION PLAT**

Form C-128  
Supersedes C-128  
Effective 1-1-83

All distances must be from the outer boundaries of the Section.

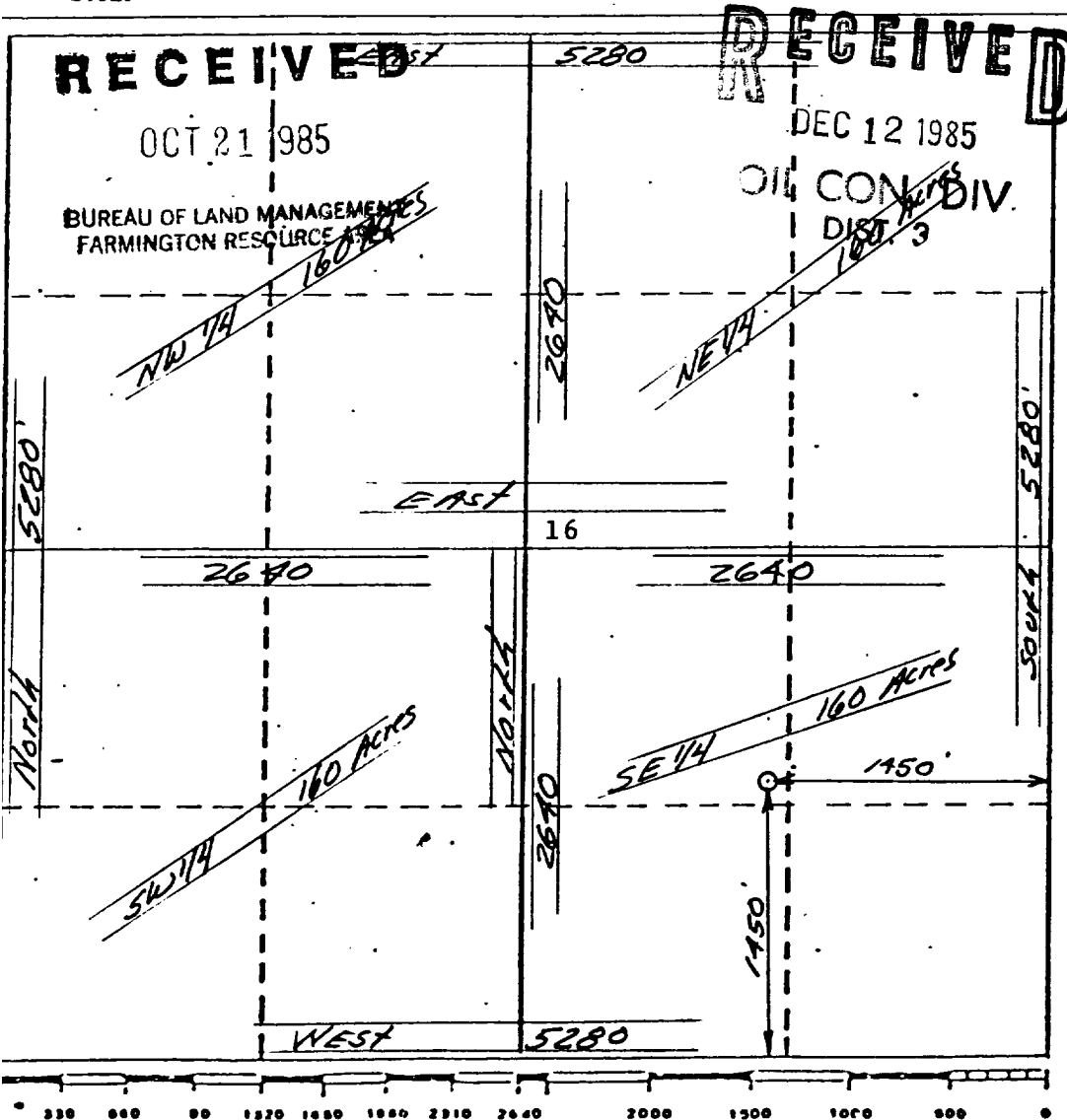
Operator <b>Robert L. Bayless</b>		Lease <b>JICARILLA 398</b>		Well No. <b>3</b>
Unit Letter <b>J</b>	Section <b>16</b>	Township <b>23 NORTH</b>	Range <b>4 WEST</b>	County <b>RIO ARRIBA</b>
Actual Footage Location of Well: <div style="display: flex; justify-content: space-between;"> <span>1450 feet from the SOUTH line and</span> <span>1450 feet from the EAST line</span> </div>				
Ground Level Elev. <b>7092</b>	Producing Formation <b>Pictured Cliff</b>	Pool <b>Ballard Pictured Cliff</b>	Dedicated Acreage: <b>160</b> Acres	

1. Outline the acreage dedicated to the subject well by colored pencil or hachure marks on the plat below.
2. If more than one lease is dedicated to the well, outline each and identify the ownership thereof (both as to working interest and royalty).
3. If more than one lease of different ownership is dedicated to the well, have the interests of all owners been consolidated by communitization, unitization, force-pooling, etc?

☐ Yes   ☐ No   If answer is "yes," type of consolidation \_\_\_\_\_

If answer is "no," list the owners and tract descriptions which have actually been consolidated. (Use reverse side of this form if necessary.) \_\_\_\_\_

No allowable will be assigned to the well until all interests have been consolidated (by communitization, unitization, forced-pooling, or otherwise) or until a non-standard unit, eliminating such interests, has been approved by the Commission.



<b>CERTIFICATION</b>	
I hereby certify that the information contained herein is true and complete to the best of my knowledge and belief.	
Name	<b>Robert L. Bayless</b>
Position	<b>Operator</b>
Company	<b>Robert L. Bayless</b>
Date	<b>10/17/85</b>
I hereby certify that the well location shown on this plat was plotted from field notes of actual surveys made by me or under my supervision, and that the same is true and correct to the best of my knowledge and belief.	
Date Surveyed	<b>OCTOBER 7 1985</b>
Registered Professional Engineer and Registered Surveyor	<b>GEORGE R. TOMPKINS</b>
Certificate No.	<b>7259</b>

