

6 BLM 1 4/C Expl 1 File
UNITED STATES
DEPARTMENT OF THE INTERIOR
GEOLOGICAL SURVEYSUBMIT IN TRIPLICATE*
(Other instructions on
reverse side)Form Approved
Budget Bureau No. 42-R142530-637-23775
5. LEASE DESIGNATION AND SERIAL NO.

SF-078272-C

6. IF INDIAN, ALLOTTEE OR TRIBE NAME

7. UNIT AGREEMENT NAME

8. FARM OR LEASE NAME

Lybrook

9. WELL NO.

2

10. FIELD AND POOL, OR WILDCAT

Lybrook Gallup

11. SEC., T., R., M., OR BLK.
AND SURVEY OR AREA

I Sec. 4, T23N, R7W, NMPM

12. COUNTY OR PARISH 13. STATE

Rio Arriba

NM

17. NO. OF ACRES ASSIGNED
TO THIS WELL

40 37.27

20. ROTARY OR CABLE TOOLS

Rotary

22. APPROX. DATE WORK WILL START*

ASAP

This action is subject to technical and
procedural review pursuant to 43 CFR 3165.3
and appeal pursuant to 43 CFR 3165.4.159 cf circulated to surface
1888 cf circulated to surface

APPLICATION FOR PERMIT TO DRILL, DEEPEN, OR PLUG BACK

1a. TYPE OF WORK

DRILL ☒DEEPEN ☐PLUG BACK ☐

b. TYPE OF WELL

OIL
WELL ☒GAS
WELL ☐

OTHER

SINGLE
ZONE ☒MULTIPLE
ZONE ☐

2. NAME OF OPERATOR

Four Corners Exploration Co.

3. ADDRESS OF OPERATOR

P O Box 208, Farmington, NM 87499

4. LOCATION OF WELL (Report location clearly and in accordance with any State requirements.)

At surface

1700' FSL & 370' FEL

At proposed prod. zone

14. DISTANCE IN MILES AND DIRECTION FROM NEAREST TOWN OR POST OFFICE*

approx. 7 1/2 miles NW of Counselors, NM

15. DISTANCE FROM PROPOSED*

LOCATION TO NEAREST
PROPERTY OR LEASE LINE, FT.

370'

(Also to nearest drlg. unit line, if any)

18. DISTANCE FROM PROPOSED LOCATION*

TO NEAREST WELL, DRILLING, COMPLETED
OR APPLIED FOR, ON THIS LEASE, FT.

approx. 790'

NE of Byron Oils
Dunn Fed. #2

19. PROPOSED DEPTH

5800'

21. ELEVATIONS (Show whether DF, RT, GR, etc.)

7150' GL; 7162' RKB

23. OPERATIONS AUTHORIZED ARE

PROPOSED CASING AND CEMENTING PROGRAM

GENERAL REQUIREMENTS

SIZE OF HOLE	SIZE OF CASING	WEIGHT PER FOOT	SETTING DEPTH
8-5/8"	8-5/8"	24#	200'
7-7/8"	4-1/2"	10.5#	5800'

Plan to drill a 12-1/4" hole and set 200' of 8-5/8" OD, 24#, J-55 surface casing;
then plan to drill a 7-7/8" hole to total depth with gel-water-mud program
to test Gallup formation. Plan to run IES and CDL logs. If determined productive,
will run 4-1/2", 10.5#, J-55 casing, selectively perforate, frac, clean out
after frac and complete well.

RECEIVED

FEB-20 1986

OIL CON. DIV.
DIST. 3

IN ABOVE SPACE DESCRIBE PROPOSED PROGRAM: If proposal is to deepen or plug back, give data on present productive zone and proposed new productive zone. If proposal is to drill or deepen directionally, give pertinent data on subsurface locations and measured and true vertical depths. Give blowout preventer program, if any.

24.

SIGNED

Barbara Williams

TITLE Petroleum Engineer

DATE

2-3-86

(This space for Federal or State office use)

PERMIT NO.

APPROVAL DATE

APPROVED BY

TITLE

CONDITIONS OF APPROVAL, IF ANY:

*See Instructions On Reverse Side

NMOCC

J. Stan McKee
M. McKee
AREA MAN

OIL CONSERVATION DIVISION

STATE OF NEW MEXICO
ENERGY AND MINERALS DEPARTMENTP. O. BOX 2088
SANTA FE, NEW MEXICO 87501Form C-102
Revised 10-1-78

All distances must be from the outer boundaries of the Section.

Operator Four Corners Exploration Company			Lease Lybrook		Well No. 2
Unit Letter 1	Section 4	Township 23 North	Range 7 West	County Rio Arriba	
Actual Footage Location of Well:					
1700 feet from the South line and		370 feet from the East line			
Ground Level Elev. 7150	Producing Formation Gallup		Pool Lybrook Gallup		Dedicated Acreage: 40 37.27 Acres

1. Outline the acreage dedicated to the subject well by colored pencil or hachure marks on the plat below.
2. If more than one lease is dedicated to the well, outline each and identify the ownership thereof (both as to working interest and royalty).
3. If more than one lease of different ownership is dedicated to the well, have the interests of all owners been consolidated by communitization, unitization, force-pooling, etc?

☐ Yes ☐ No If answer is "yes," type of consolidation _____

If answer is "no," list the owners and tract descriptions which have actually been consolidated. (Use reverse side of this form if necessary.) _____

No allowable will be assigned to the well until all interests have been consolidated (by communitization, unitization, forced-pooling, or otherwise) or until a non-standard unit, eliminating such interests, has been approved by the Division.

RECEIVED FEB 03 1986 BUREAU OF LAND MANAGEMENT FEDERAL OIL FIELD AREA		SEC. 4	
		Four Corner's Exploration Co. Ls#SF-078272-C	
FEB 20 1986 OIL CON. DIV. DIST. 3		1700'	

CERTIFICATION

I hereby certify that the information contained herein is true and complete to the best of my knowledge and belief.

Sherman E. Dugan
Name Sherman E. Dugan

Position
Geologist

Company
Dugan Production Corp.

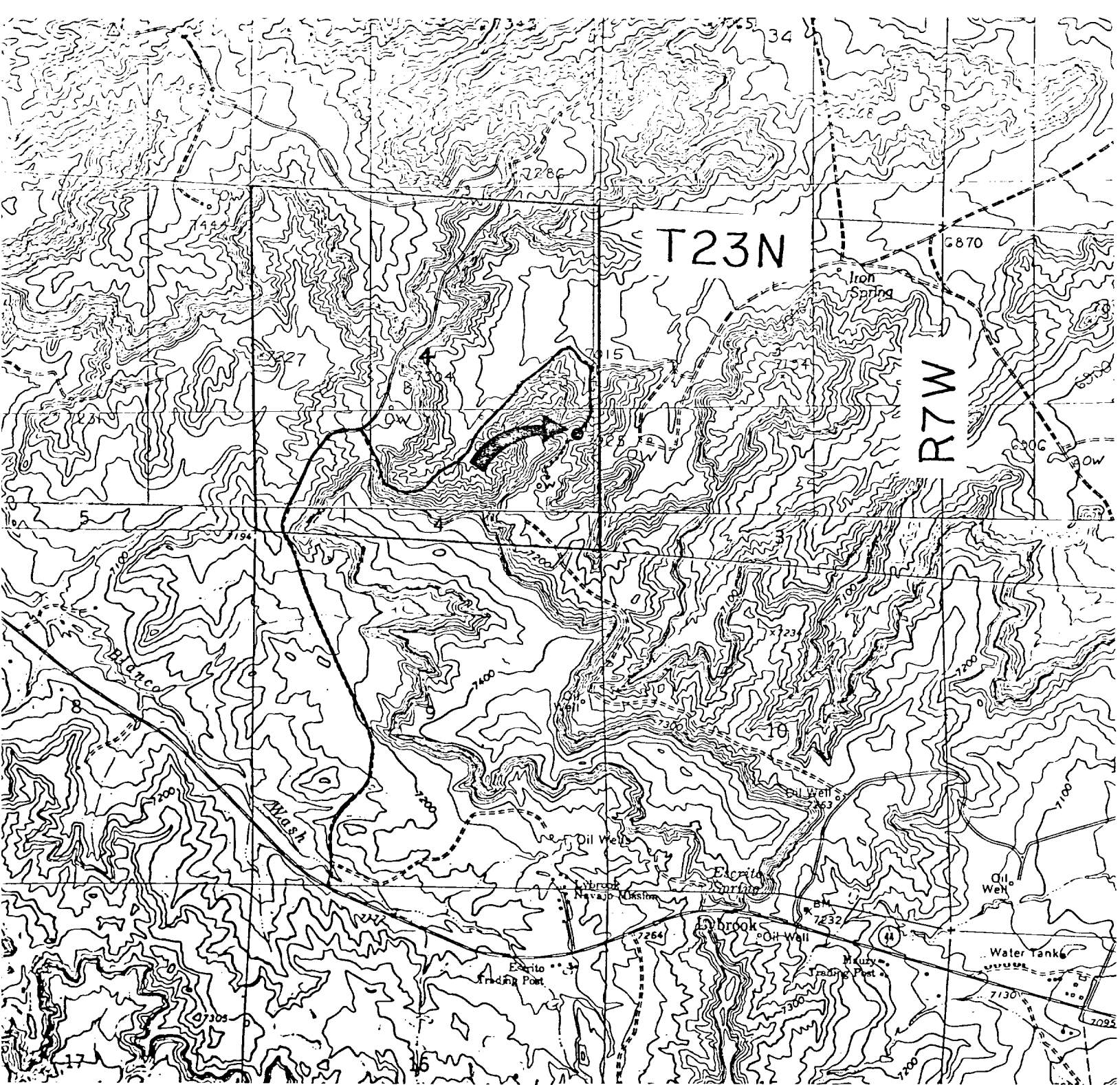
Date
2-3-86

I hereby certify that the location shown on this plat was obtained from field notes of actual surveys made by me or under my supervision, and that the same is true and correct to the best of my knowledge and belief.

Date Surveyed
January 16, 1986

Registered Professional Engineer
and/or Land Surveyor

Edgar L. Risenhoover
Certificate No. 5979
Edgar L. Risenhoover, L.S.



FOUR CORNERS EXPLORATION - Lybrook #2
Existing Roads Exhibit E

Distance from nearest town or reference pt.
 Approx. 1 1/2 miles north of Escrito Trading Post

Type of surface dirt

Conditions good

Other _____

Reference Maps: USGS Crow Mesa East, NM
 Provisional Edition 1985, 7.5'; Lybrook,
 NM 7.5' Series 1966

FOUR CORNERS EXPLORATION - Lybrook #2
Planned Access Road(s) Exhibit E

Width _____ Maximum grades _____

Drainage design _____

Cuts & Fills _____

Surfacing material _____

↳ Turnouts

▢ Culverts

▣ Gates

▤ Cattleguards

▥ Fence cuts

**NO ACCESS ROAD
 REQUIRED**

Access road(s) do/do not cross Fed/Ind land.