

UNITED STATES
DEPARTMENT OF THE INTERIOR
BUREAU OF LAND MANAGEMENT

APPLICATION FOR PERMIT TO DRILL, DEEPEN, OR PLUG BACK

1a. TYPE OF WORK

DRILL ☒

DEEPEN ☐

PLUG BACK ☐

b. TYPE OF WELL

OIL
WELL ☒

GAS
WELL ☐

OTHER Comingled

SINGLE
ZONE ☒

MULTIPLE
ZONE ☐

2. NAME OF OPERATOR

W. B. Martin and Associates

3. ADDRESS OF OPERATOR

709 N. Butler Farmington, N.M. 87401

4. LOCATION OF WELL (Report location clearly and in accordance with any State requirements.)

At surface

At proposed prod. zone

1650' FSL and 990' RECEIVED

14. DISTANCE IN MILES AND DIRECTION FROM NEAREST TOWN OR POST OFFICE* OCT 10 1984

19 miles NW of Cuba, N.M.

10. DISTANCE FROM PROPOSED*

LOCATION TO NEAREST
PROPERTY OR LEASE LINE, FT.
(Also to nearest drlg. unit line, if any)

3630' FNL

18. DISTANCE FROM PROPOSED LOCATION*

TO NEAREST WELL, DRILLING, COMPLETED,
OR APPLIED FOR, ON THIS LEASE, FT.

150'

21. ELEVATIONS (Show whether DF, RT, GR, etc.)

6694' GR

DRILLING OPERATIONS AUTHORIZED ARE

SUBJECT TO COMPLIANCE WITH ATTACHED

GENERAL REQUIREMENTS CEMENTING PROGRAM

17. NO. OF ACRES ASSIGNED
TO THIS WELL

40

20. ROTARY OR CABLE TOOLS

Rotary

22. APPROX. DATE WORK WILL START*

Dependant upon approval

This action is subject to administrative
appeal pursuant to 30 CFR 290.

SIZE OF HOLE	SIZE OF CASING	WEIGHT PER FOOT	SETTING DEPTH	QUANTITY OF CEMENT
12 1/4"	9 5/8"	32#	250'	206.50 ft ³
7 7/8"	5 1/2"	17#	6595'	1200.00 ft ³

PROPOSED OPERATIONS

1. Drill 12 1/4" hole to $\pm 250'$. Run and cement 9 5/8" casing.
WOC 12 hours. Pressure test BOP to 1000 PSI.

2. Drill 7 7/8" hole to 6595' with low solids-low water loss
mud. Run and cement 5 1/2" casing.

RECEIVED
FEB 24 1986
OIL CON. DIV.
DIST. 3

IN ABOVE SPACE DESCRIBE PROPOSED PROGRAM: If proposal is to deepen or plug back, give data on present productive zone and proposed new productive zone. If proposal is to drill or deepen directionally, give pertinent data on subsurface locations and measured and true vertical depths. Give blowout preventer program, if any.

24.

SIGNED

W.B. Martin

TITLE Operator

(This space for Federal or State office use)

PERMIT NO.

APPROVAL DATE

APPROVED BY

CONDITIONS OF APPROVAL, IF ANY:

TITLE

APPROVED 8/84
AS AMENDED
DEC 26 1984
DATE
<i>Mike Shiloh</i>
AREA MANAGER
FARMINGTON RESOURCE AREA

*See Instructions On Reverse Side

All distances must be from the outer boundaries of the Section.

Operator W. B. MARTIN & ASSOCIATES			Lease MARTIN-WHITAKER		Well No. 66
Unit Letter I	Section 9	Township 23N	Range 5W	County Rio Arriba	
Actual Footage Location of Well: 1650 feet from the South line and 990 feet from the East line					
Ground Level Elev. 6694	Producing Formation Gallup-Dakota	Pool South Lindrith Gallup Dakota Extension		Dedicated Acreage 40 Acres	

1. Outline the acreage dedicated to the subject well by colored pencil or hatchure marks on the plat below.
2. If more than one lease is dedicated to the well, outline each and identify the ownership thereof (both as to working interest and royalty).
3. If more than one lease of different ownership is dedicated to the well, have the interests of all owners been consolidated by communitization, unitization, force-pooling, etc?

☐ Yes ☐ No If answer is "yes," type of consolidation _____

If answer is "no," list the owners and tract descriptions which have actually been consolidated. (Use reverse side of this form if necessary.) _____

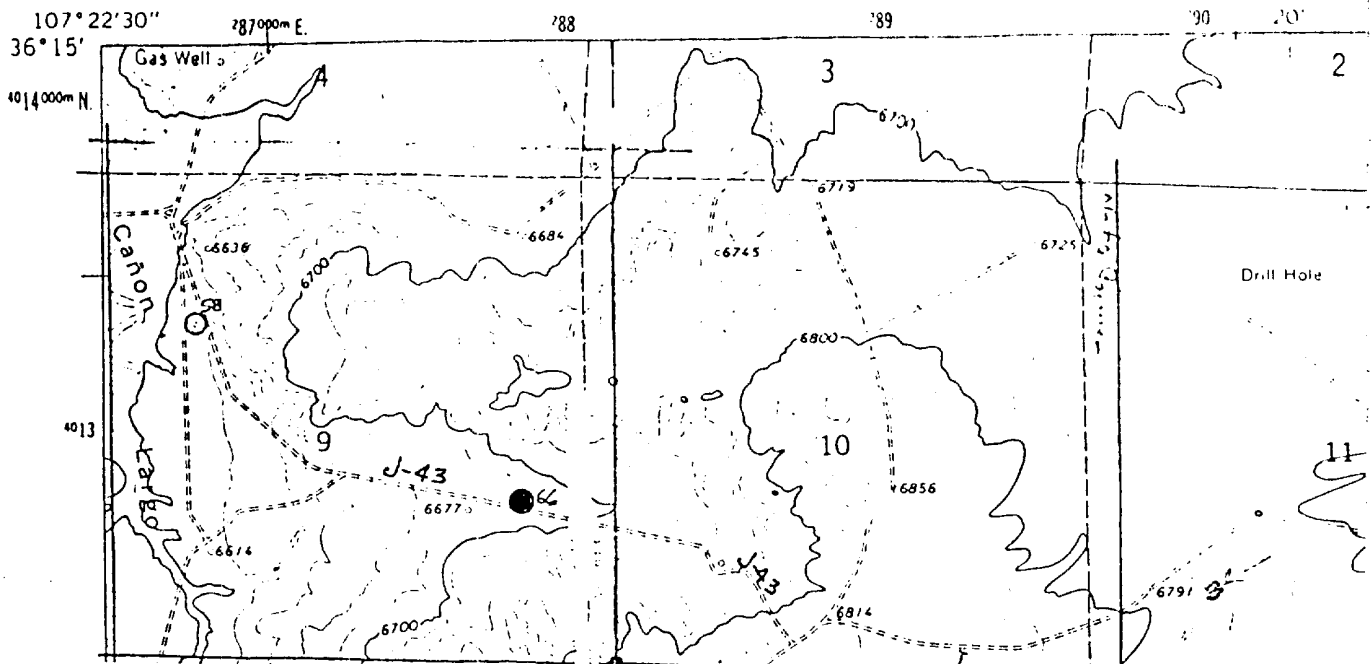
No allowable will be assigned to the well until all interests have been consolidated (by communitization, unitization, forced-pooling, or otherwise) or until a non-standard unit, eliminating such interests, has been approved by the Commission.

Sec.		<p align="center">RECEIVED OCT 10 1984 BUREAU OF OIL AND MINERALS SANTA FE, NEW MEXICO</p>	
<p align="center">RECEIVED FEB 24 1986 OIL CON. DIV. DIST. 3</p>		<p align="center">990'</p> <p align="center">1650'</p>	

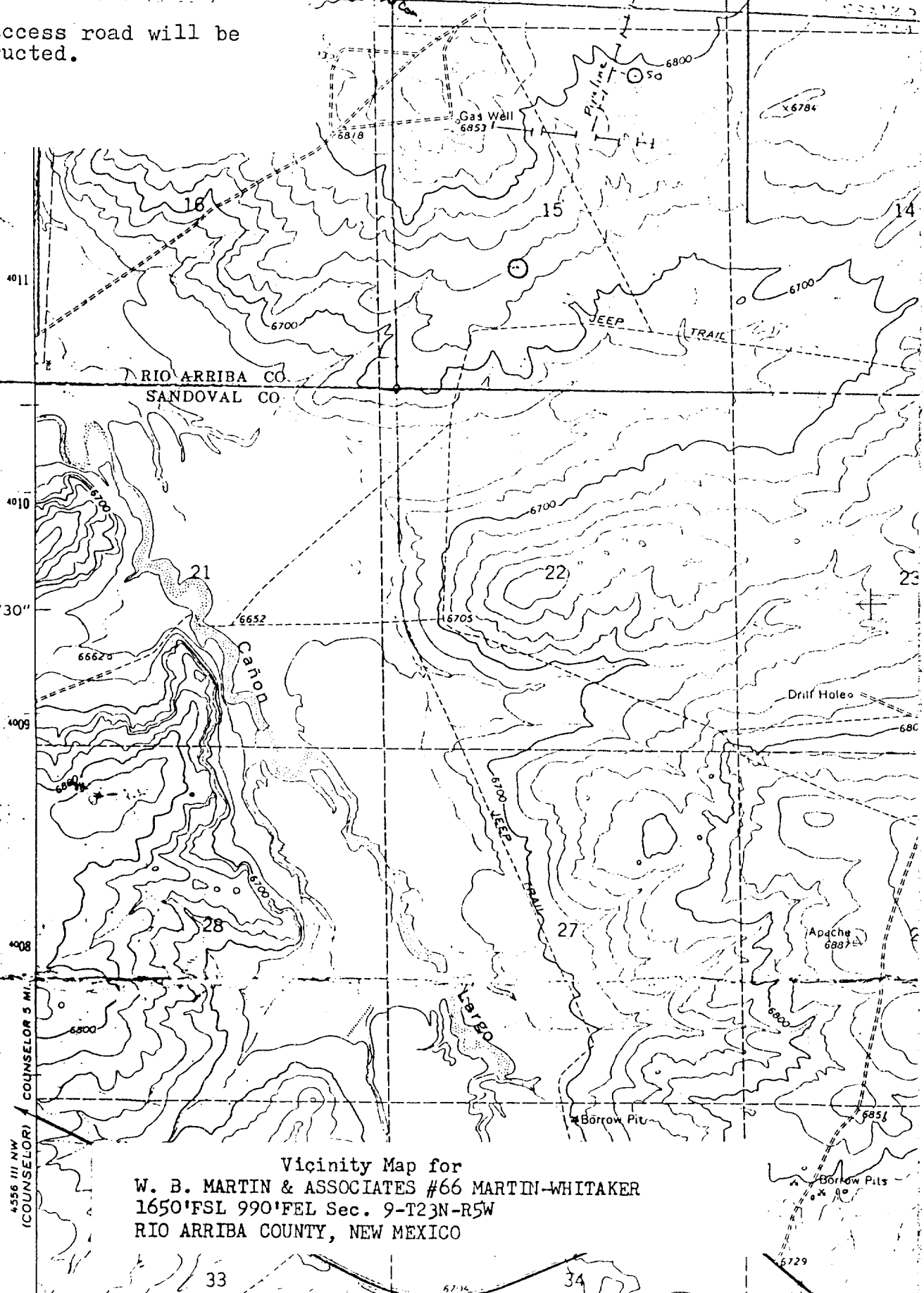
Scale: 1"=1000'

<p align="center">CERTIFICATION</p> <p>I hereby certify that the information contained herein is true and complete to the best of my knowledge and belief.</p>	
Name	<i>W.B. Martin Jr.</i>
Position	Operator
Company	W.B. Martin & Associates
Date	10/8/84
<p>I hereby certify that the well location shown on this plat was plotted from field notes of actual surveys made by me or under my supervision, and that the same is true and correct to the best of my knowledge and belief.</p>	
Date Surveyed	October 7, 1984
Registered Professional Engineer and Land Surveyor	<i>Fred B. Kerr Jr.</i>
Certificate No.	3950

DEPARTMENT OF THE INTERIOR
GEOLOGICAL SURVEY



No new access road will be constructed.



Vicinity Map for
W. B. MARTIN & ASSOCIATES #66 MARTIN-WHITAKER
1650'FSL 990'FEL Sec. 9-T23N-R5W
RIO ARRIBA COUNTY, NEW MEXICO