

UNITED STATES
DEPARTMENT OF THE INTERIOR
BUREAU OF LAND MANAGEMENT

APPLICATION FOR PERMIT TO DRILL, DEEPEN, OR PLUG BACK

1a. TYPE OF WORK

DRILL ☒

DEEPEEN ☐

PLUG BACK ☐

b. TYPE OF WELL

OIL
WELL ☒

GAS
WELL ☐

OTHER ☐

SINGLE
ZONE ☐

MULTIPLE
ZONE ☒

2. NAME OF OPERATOR

Chace Oil Company, Inc.

3. ADDRESS OF OPERATOR

313 Washington SE, Albuquerque, NM 87108

4. LOCATION OF WELL (Report location clearly and in accordance with any State requirements.)

At surface 989' FSL & 592' FEL, Unit 'P', Section 11, T23N, R4W

At proposed prod. zone

14. DISTANCE IN MILES AND DIRECTION FROM NEAREST TOWN OR POST OFFICE

15 miles west-southwest of Lindrith, New Mexico

15. DISTANCE FROM PROPOSED LOCATION TO NEAREST PROPERTY OR LEASE LINE, FT. (Also to nearest drilg unit line, if any.)

4291' from lease line
331' from unit line

18. DISTANCE FROM PROPOSED LOCATION TO NEAREST WELL, DRILLING, COMPLETED, OR APPLIED FOR, ON THIS LEASE, FT.

1400'

19. PROPOSED DEPTH

7575'

21. ELEVATIONS (Show whether DF, RT, GR, etc.)

7388' GR

DRILLING OPERATIONS AUTHORIZED ARE
SUBJECT TO COMPLIANCE WITH ATTACHED

"GENERAL REQUIREMENTS"
PROPOSED CASING AND CEMENTING PROGRAM

This action is subject to technical and
procedural review pursuant to 43 CFR 3165.3
and appeal pursuant to 43 CFR 3165.4.

SIZE OF HOLE	SIZE OF CASING	WEIGHT PER FOOT	SETTING DEPTH	QUANTITY OF CEMENT
12 1/4"	8 5/8"	24# (J-55)	225'	225 sks (405 CF) Class B cement
7 7/8"	4 1/2"	11.6# (N-80)	7575'	1st stage: 750 sks (1350 CF) 50/50 pozmix. 2nd stage: 505 sks (909 CF) 40/60 pozmix (12% gel) 40 sks (72 CF) Class B cement

Drill 230' of 12 1/4" surface hole. Set 225' of 8 5/8" casing. Cement to surface with 225 sks (405 CF) cement. Using a water base mud (15% oil) and Schaeffer 5000# standard doublegate hydraulic BOP, drill 7 7/8" hole to 7575' to test the Dakota formation. Logging program: Run Dil, Caliper, GR, SP, FDC-CNL from T. D. to surface.

Estimated Tops:

Ojo Alamo	2594'	Point Lookout	5139'	Dakota 'A'	7245'
Picture Cliffs	3009'	Gallup	5839'	Dakota 'D'	7385'
Chacra	3359'	Tocito	6851'	Burro Canyon	7489'
Cliff House	4559'	Greenhorn	7154'		

IN ABOVE SPACE DESCRIBE PROPOSED PROGRAM: If proposal is to deepen or plug back, give data on existing productive zone and proposed new productive zone. If proposal is to drill or deepen directionally, give pertinent data on subsurface locations and measured and true vertical depths. Give blowout preventer program, if any.

SIGNED

TITLE

Land Manager

(This space for Federal or State office use)

PERMIT NO.

APPROVAL DATE

APPROVED BY

TITLE

DATE

CONDITIONS OF APPROVAL, IF ANY:

NMOCC

*See Instructions On Reverse Side

Title 18 U.S.C. Section 1001, makes it a crime for any person knowingly and willfully to make or cause to be made any false statement.

All distances must be from the outer boundaries of the Section.

Operator CHACE OIL COMPANY		Lease JICARILLA 47		Well No. 47-27
Unit Letter P	Section 11	Township 23 NORTH	Range 4 WEST	County RIO ARriba
Actual Footage Location of Well: 989 feet from the SOUTH line and 592 feet from the EAST line				
Ground Level Elev. 7388'	Producing Formation Gallup - Dakota	Pool South Lindvith Gallup Dakota	Dedicated Acreage: 40 Acres	

1. Outline the acreage dedicated to the subject well by colored pencil or hatchure marks on the plat below.
2. If more than one lease is dedicated to the well, outline each and identify the ownership thereof (both as to working interest and royalty).
3. If more than one lease of different ownership is dedicated to the well, have the interests of all owners been consolidated by communitization, unitization, force-pooling, etc?

☐ Yes ☐ No If answer is "yes," type of consolidation _____

If answer is "no," list the owners and tract descriptions which have actually been consolidated. (Use reverse side of this form if necessary.) _____

No allowable will be assigned to the well until all interests have been consolidated (by communitization, unitization, forced-pooling, or otherwise) or until a non-standard unit, eliminating such interests, has been approved by the Division.

<p align="center">RECEIVED MAY 07 1986 BUREAU OF LAND MANAGEMENT FARMINGTON RESOURCE AREA</p>		<p align="center">RECEIVED MAY 15 1986 CON. DIV. 1 DIST. 3</p>
<p align="right">LOC. 592' 989'</p>		

CERTIFICATION

I hereby certify that the information contained herein is true and complete to the best of my knowledge and belief.

Mante Anderson

Name

Geologist

Position

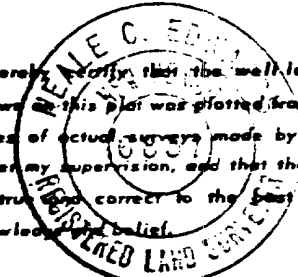
Chace Oil Comp.

Company

1-30-86

Date

I hereby certify that the well location shown on this plat was plotted from field notes of actual surveys made by me or under my supervision, and that the same is true and correct to the best of my knowledge and belief.



Date Surveyed

1-20-86

Registered Professional Engineer and/or Land Surveyor

Mark C. Edwards

Certificate No.

6857

