

UNITED STATES
DEPARTMENT OF THE INTERIOR
BUREAU OF LAND MANAGEMENT

APPLICATION FOR PERMIT TO DRILL, DEEPEN, OR PLUG BACK

1a. TYPE OF WORK

DRILL ☒

DEEPEN ☐

PLUG BACK ☐

b. TYPE OF WELL

OIL WELL ☒

GAS WELL ☐

OTHER

SINGLE ZONE ☒

MULTIPLE ZONE ☐

2. NAME OF OPERATOR

JACK A. COLE

3. ADDRESS OF OPERATOR

P. O. BOX 191, FARMINGTON, NM 87499

4. LOCATION OF WELL (Report location clearly and in accordance with any State requirements.)

At surface

860' FNL, 2270' FEL

At proposed prod. zone

SAME

14. DISTANCE IN MILES AND DIRECTION FROM NEAREST TOWN OR POST OFFICE*

5 MILES NW COUNSELORS TRADING POST

15. DISTANCE FROM PROPOSED*

LOCATION TO NEAREST
PROPERTY OR LEASE LINE, FT.
(Also to nearest drlg. unit line, if any)

18. DISTANCE FROM PROPOSED LOCATION*

TO NEAREST WELL, DRILLING, COMPLETED,
OR APPLIED FOR, ON THIS LEASE, FT.

16. NO. OF ACRES IN LEASE

2567.37

19. PROPOSED DEPTH

5665'

17. NO. OF ACRES ASSIGNED
TO THIS WELL

40-159-90

20. ROTARY OR CABLE TOOLS

ROTARY

21. ELEVATIONS (Show whether DF, RT, GR, etc.)

6847' GR SUBJECT TO COMPLIANCE WITH ATTACHED

22. APPROX. DATE WORK WILL START*

NOVEMBER 15, 1987

23. "GENERAL REQUIREMENTS" PROPOSED CASING AND CEMENTING PROGRAM

SIZE OF HOLE	SIZE OF CASING	WEIGHT PER FOOT	SETTING DEPTH	
12-1/4"	8-5/8"	24.0 LB. J-55	250'	250 SKS (295 CU. FT.)
7-7/8"	4-1/2"	10.50 LB. K-55	5665'	875 SKS (1874 CU. FT.)

ALL PRODUCING INTERVALS IN GALLUP FORMATION WILL BE STIMULATED AS NECESSARY.

EXHIBITS:

"A" LOCATION AND ELEVATION PLAT
"B" TEN POINT COMPLIANCE PROGRAM
"C" BLOWOUT PREVENTOR DIAGRAM
"D" MULTI-POINT REQUIREMENTS OF APD

"E" ACCESS ROAD TO LOCATION
"F" DRILL RIG LAYOUT
"G" FRACTURING PROGRAM LAYOUT
"H" LOCATION PROFILE
"I" PROPOSED PIPELINE

THE GAS FOR THIS WELL IS COMMITTED

RECEIVED
NOV 23 1987

IN ABOVE SPACE DESCRIBE PROPOSED PROGRAM: If proposal is to deepen or plug back, give data on present productive zone and proposed new productive zone. If proposal is to drill or deepen directionally, give pertinent data on subsurface locations and measured and true vertical depths. Give blowout preventer program, if any.

24.

SIGNED Dwayne Blawett

TITLE PRODUCTION SUPERINTENDENT

DATE NOVEMBER 3, 1987

(This space for Federal or State office use)

PERMIT NO. _____

APPROVAL DATE _____

APPROVED BY _____

TITLE _____

DATE _____

CONDITIONS OF APPROVAL, IF ANY:

NMOCC

APPROVED
AS AMENDED
NOV 19 1987
AREA MANAGER

*See Instructions On Reverse Side

OIL CONSERVATION DIVISION

STATE OF NEW MEXICO
ENERGY AND MINERALS DEPARTMENT

P. O. BOX 2088

SANTA FE, NEW MEXICO 87501

Form C-102
Revised 10-1-78

All distances must be from the outer boundaries of the Section.

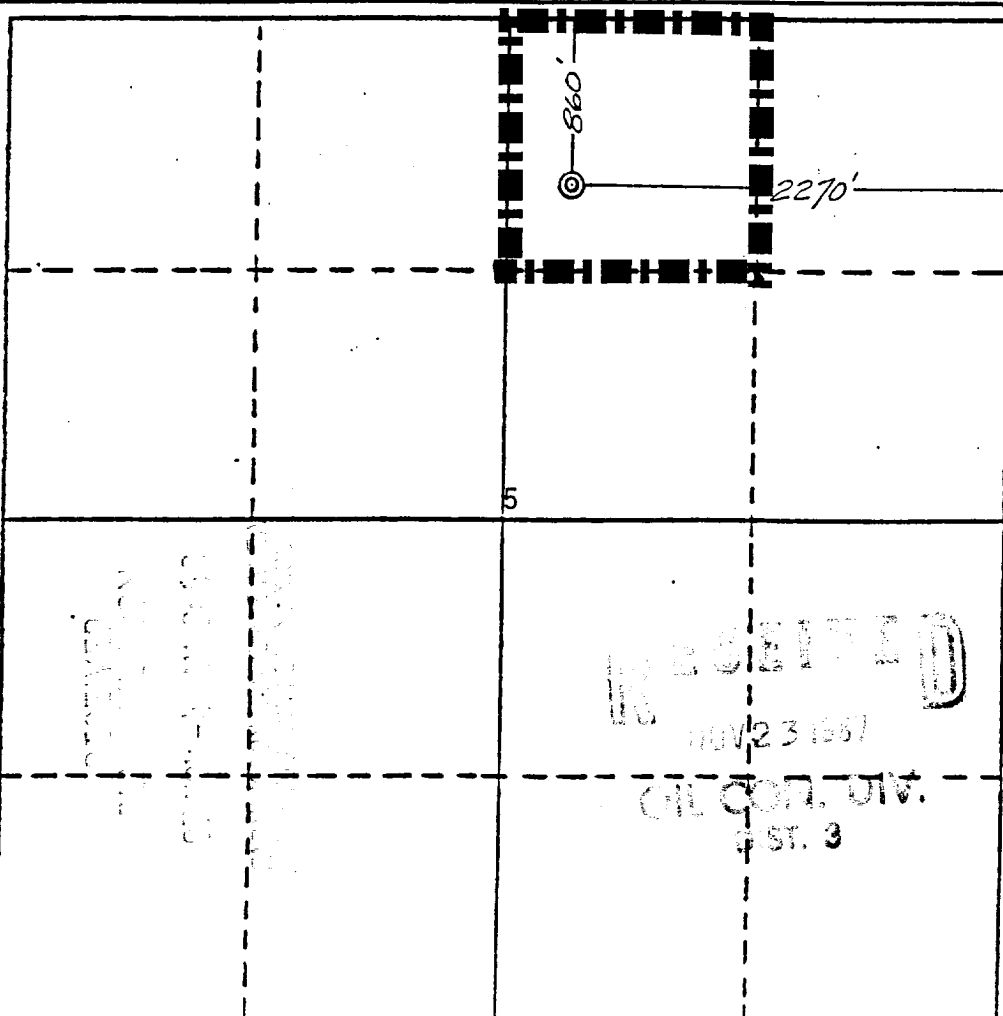
Operator JACK A. COLE		Lessee MARCUS A		Well No. # 12	
Unit Letter B	Section 5	Township 23 NORTH	Range 6 WEST	County RIO ARRIBA	
Actual Footage Location of Well 860 feet from the NORTH line and 2270 feet from the EAST line					
Ground Level Elev. 6847	Producing Formation GALLUP	Pool COUNSELLOR'S GAL/DK LYBROOK GALLUP EXT		Dedicated Acreages 40 159.90 Acres	

1. Outline the acreage dedicated to the subject well by colored pencil or hachure marks on the plat below.
2. If more than one lease is dedicated to the well, outline each and identify the ownership thereof (both as to working interest and royalty).
3. If more than one lease of different ownership is dedicated to the well, have the interests of all owners been consolidated by communitization, unitization, force-pooling, etc.?

☐ Yes ☐ No If answer is "yes," type of consolidation _____

If answer is "no," list the owners and tract descriptions which have actually been consolidated. (Use reverse side of this form if necessary.) _____

No allowable will be assigned to the well until all interests have been consolidated (by communitization, unitization, forced-pooling, or otherwise) or until a non-standard unit, eliminating such interests, has been approved by the Division.



CERTIFICATION

I hereby certify that the information contained herein is true and complete to the best of my knowledge and belief.

Name

Dwayne Blumett

Position

PRODUCTION SUPERINTENDENT

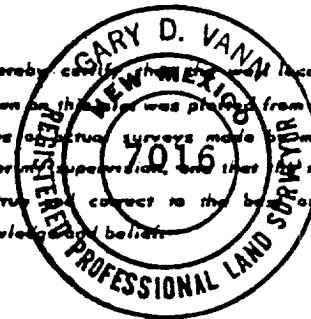
Company

JACK A. COLE

Date

NOVEMBER 3, 1987

I hereby certify that the well location shown on this plat was plotted from field notes of actual surveys made by me or under my supervision, and that the same is true and correct to the best of my knowledge and belief.



Date Surveyed

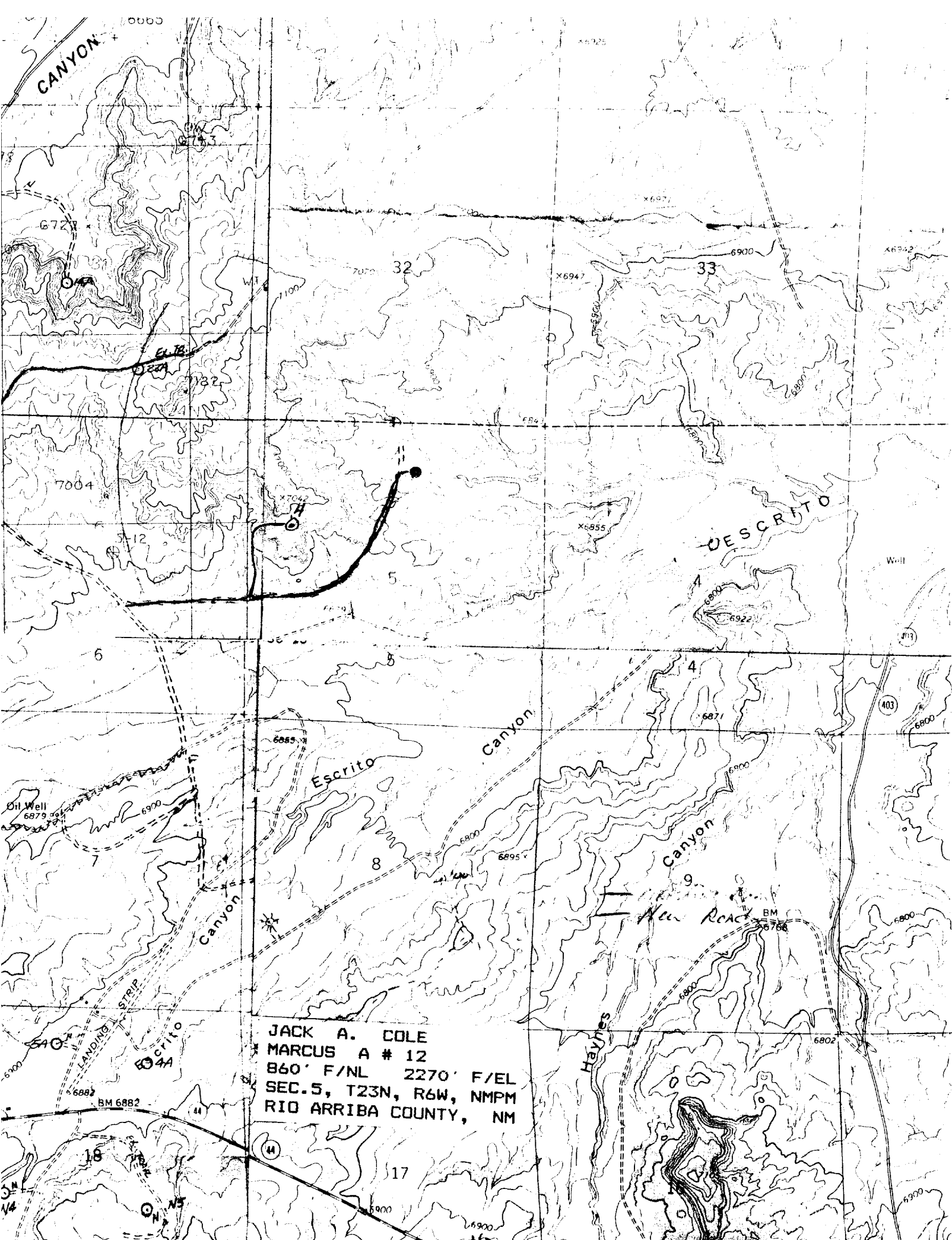
October 31, 1987

Registered Professional Engineer
and/or Land Surveyor*Gary D. Vann*
Gary D. Vann

Certificate No.

7016

RECEIVED
NOV 23 1987
OIL CON. DIV.
ST. 3



JACK A. COLE
MARCUS A # 12
B60' F/NL 2270' F/EL
SEC. 5, T23N, R6W, NMPM
RIO ARRIBA COUNTY, NM