

UNITED STATES  
DEPARTMENT OF THE INTERIOR  
BUREAU OF LAND MANAGEMENT

SUBMIT IN TRIPLICATE\*  
(Other instructions on  
reverse side)

Form approved.  
Budget Bureau No. 1004-0136  
Expires August 31, 1985

APPLICATION FOR PERMIT TO DRILL, DEEPEN, OR PLUG BACK

1a. TYPE OF WORK

DRILL ☒

DEEPEN ☐

PLUG BACK ☐

b. TYPE OF WELL

OIL WELL ☒

GAS WELL ☐

OTHER

2. NAME OF OPERATOR

Chace Oil Company, Inc.

3. ADDRESS OF OPERATOR

313 Washington SE, Albuquerque, NM 87108

4. LOCATION OF WELL (Report location clearly and in accordance with any State requirements.)

At surface

782' FSL & 2189' FWL, Unit 'N' Section 11, T23N, R4W  
At proposed prod. zone

14. DISTANCE IN MILES AND DIRECTION FROM NEAREST TOWN OR POST OFFICE\*

15 miles west-southwest of Lindrith, New Mexico

15. DISTANCE FROM PROPOSED\* LOCATION TO NEAREST PROPERTY OR LEASE LINE, FT. (Also to nearest drg. unit line, if any)

2189' from lease line  
451' from unit line

18. DISTANCE FROM PROPOSED LOCATION\* TO NEAREST WELL, DRILLING, COMPLETED, OR APPLIED FOR, ON THIS LEASE, FT.

1410'

21. ELEVATIONS (Show whether DF, RT, GR, etc.)

This action is subject to technical and procedural review pursuant to 43 CFR 3165.3 and appeal pursuant to 43 CFR 3165.4.

PROPOSED CASING AND CEMENTING PROGRAM

SIZE OF HOLE	SIZE OF CASING	WEIGHT PER FOOT	SETTING DEPTH
12 1/4"	8 5/8"	24#, (J-55)	225'
7 7/8"	4 1/2"	11.6# (N-80)	7625'

22. APPROX. DATE WORK WILL START\*

11/15/88

DRILLING OPERATIONS AUTHORIZED ARE  
SUBJECT TO COMPLIANCE WITH ATTACHED  
"GENERAL REQUIREMENTS"

170 sks (220 cf) Class B Cement  
1st stage: 950 sks (1359 cf)  
50/50 pozmix  
2nd stage: 500 sks (1060 cf)  
65/35 pozmix (12% gel)  
50 sks (59 cf) Class B cement

Drill 230' of 12 1/4" surface hole. Set 225' of 8 5/8" casing. Cement to surface with 170 sks (220 cf) cement. Using a water base mud and Schaeffer 5000# standard doublegate hydraulic BOP, drill 7 7/8" hole to 7625' to test the Dakota formation.

Logging program: Run Dil, Caliper, GR, SP, FDC-CNL from T.D. to surface. Casing program: Cementing tool at 3270' KB. 1st stage cement top: 3000'KB; 2nd stage cement top: surface. Estimated tops:

Ojo Alamo	2655'	Point Lookout	5200'	Dakota 'A'	7306'
Picture Cliffs	3070'	Gallup	5900'	Dakota 'D'	7446'
Chacra	3420'	Tocito	6912'	Burro Canyon	7550'
Cliff House	4620'	Greenhorn	7215'		

IN ABOVE SPACE DESCRIBE PROPOSED PROGRAM: If proposal is to deepen or plug back, give data on present productive zone and proposed new productive zone. If proposal is to drill or deepen directionally, give pertinent data on subsurface locations and measured and true vertical depths. Give blowout preventer program, if any.

24.

SIGNED

TITLE

Engineer

DATE

8/10/88

(This space for Federal or State office use)

PERMIT NO.

APPROVAL DATE

APPROVED BY

TITLE

DATE

CONDITIONS OF APPROVAL, IF ANY:

NMOCC

\*See Instructions On Reverse Side

All distances must be from the outer boundaries of the Section.

Operator <b>CHACE OIL COMPANY</b>		Lease <b>JICARILLA 47</b> <i>Tribal Cont.</i>		Well No. <b>21</b>
Unit Letter <b>N</b>	Section <b>11</b>	Township <b>23 NORTH</b>	Range <b>4 WEST</b>	County <b>RIO ARRIBA</b>

Actual Footage Location of Well:

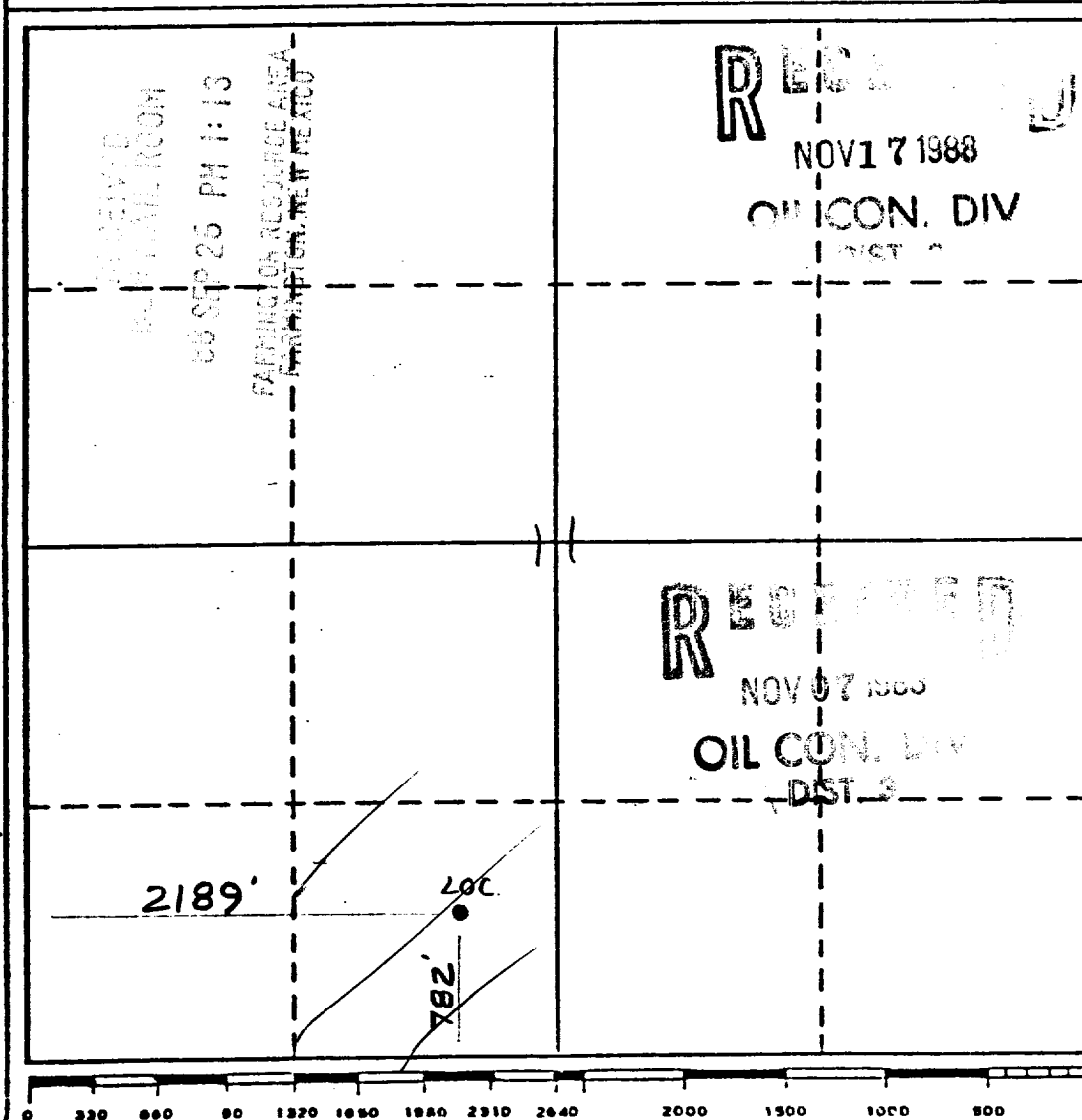
<b>782</b>	feet from the <b>SOUTH</b> line and	<b>2189</b>	feet from the <b>WEST</b> line
Ground Level Elev. <b>7403'</b>	Producing Formation <b>Gallup-Dakota</b>	Pool <b>South-Lindbergh Gallup-Dakota</b>	Dedicated Acreage: <b>40</b> Acres

1. Outline the acreage dedicated to the subject well by colored pencil or hatchure marks on the plat below.
2. If more than one lease is dedicated to the well, outline each and identify the ownership thereof (both as to working interest and royalty).
3. If more than one lease of different ownership is dedicated to the well, have the interests of all owners been consolidated by communitization, unitization, force-pooling, etc?

☐ Yes ☐ No If answer is "yes," type of consolidation \_\_\_\_\_

If answer is "no," list the owners and tract descriptions which have actually been consolidated. (Use reverse side of this form if necessary.) \_\_\_\_\_

No allowable will be assigned to the well until all interests have been consolidated (by communitization, unitization, forced-pooling, or otherwise) or until a non-standard unit, eliminating such interests, has been approved by the Division.

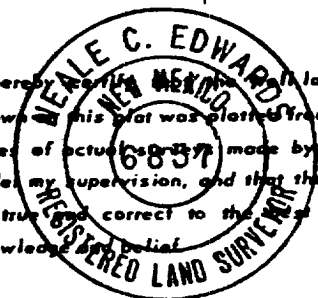


CERTIFICATION

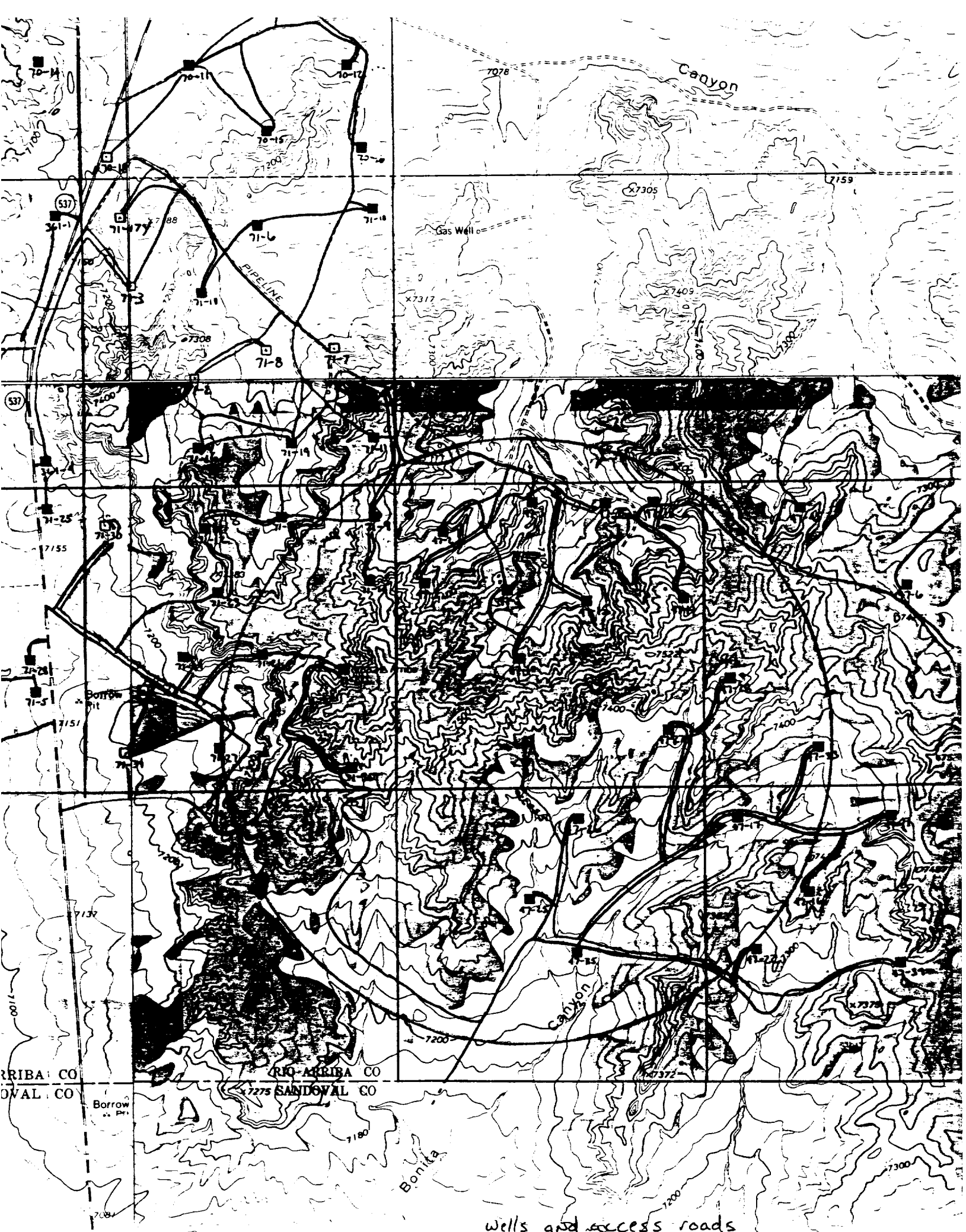
I hereby certify that the information contained herein is true and complete to the best of my knowledge and belief.

Name Frank A. Walker  
Position Vice President  
Company Chace Oil Co.  
Date November 15, 1988

I hereby certify that the location shown on this plat was plotted from field notes of actual survey made by me or under my supervision, and that the same is true and correct to the best of my knowledge and belief.



Date Surveyed 8-17-88  
Registered Professional Engineer and/or Land Surveyor  
Neale C. Edwards  
Certificate No. 6857



ARRIBA CO  
SANDOVAL CO

RIO ARRIBA CO  
SANDOVAL CO

Borrow  
Pit

wells and access roads