

STATE OF NEW MEXICO
ENERGY AND MINERALS DEPARTMENT

6 NMOCD 1 File
OIL CONSERVATION DIVISION
P. O. BOX 2088
SANTA FE, NEW MEXICO 87501

30-039-24359

Form C-101
Revised 10-1-78

NO. OF COPIES RECEIVED	
DISTRIBUTION	
SANTA FE	
FILE	
U.S.G.S.	
LAND OFFICE	
OPERATOR	

5A. Indicate Type of Lease
STATE ☒ FEE ☐
5. State Oil & Gas Lease No.
V-2258

APPLICATION FOR PERMIT TO DRILL, DEEPEN, OR PLUG BACK

1a. Type of Work

7. Unit Agreement Name

b. Type of Well DRILL ☒ DEEPEN ☐ PLUG BACK ☐
OIL WELL ☒ GAS WELL ☐ OTHER ☐ SINGLE ZONE ☒ MULTIPLE ZONE ☐

8. Form or Lease Name
State "J"

2. Name of Operator

9. Well No.

BCO, Inc.

2

3. Address of Operator

135 Grant, Santa Fe, NM 87501

10. Field and Pool, or Wildcat
Lybrook Gallup Ext.

4. Location of Well

UNIT LETTER J LOCATED 1805 FEET FROM THE South LINE

AND 1730 FEET FROM THE East LINE OF SEC. 16 TWP. 23N RGE. 7W NMPM

12. County
Rio Arriba

19. Proposed Depth 6008'	19A. Formation Gallup	20. Rotary or C.T. Rotary
21. Elevations (Show whether DF, RT, etc.) 7382' GL	21A. Kind & Status Plug. Bond State-wide	22. Approx. Date Work will start 4-1-89

23.

PROPOSED CASING AND CEMENT PROGRAM

SIZE OF HOLE	SIZE OF CASING	WEIGHT PER FOOT	SETTING DEPTH	SACKS OF CEMENT	EST. TOP
12-1/4"	8-5/8"	23#	200'	150 sx (190 cu ft.)	surface
7-7/8"	4-1/2"	11.6#	6008'	2165 cu.ft.	surface

Plan to drill a 12-1/4" hole and set ±200' of 8-5/8" OD, 23#, limited service, range 3 surface casing; then plan to drill a 7-7/8" hole to total depth with gel-water-mud program to test Gallup formation. Plan to run IES and CDL logs. If determined productive, will run 4 1/2", 11.6#, J-55 casing, selectively perforate, frac, clean out after frac and complete well.

APPROVAL EXPIRES 6-21-89
UNLESS DRILLING IS COMMENCED.
SPUD NOTICE MUST BE SUBMITTED
WITHIN 10 DAYS.

1. ABOVE SPACE DESCRIBE PROPOSED PROGRAM; IF PROPOSAL IS TO DEEPEN OR PLUG BACK, GIVE DATA ON PRESENT PRODUCTIVE ZONE AND PROPOSED NEW PRODU-
VE ZONE. GIVE BLOWOUT PREVENTER PROGRAM, IF ANY.

I hereby certify that the information above is true and complete to the best of my knowledge and belief.

signed Elizabeth B. Keeshan Title Vice-President Date 12/14/89
Elizabeth B. Keeshan
(This space for State Use)

APPROVED BY Emir Bunel TITLE DEPUTY OIL & GAS INSPECTOR, DIST. #3 DATE DEC 21 1988
CONDITIONS OF APPROVAL, IF ANY:

OIL CONSERVATION DIVISION

STATE OF NEW MEXICO
ENERGY AND MINERALS DEPARTMENTP. O. BOX 2088
SANTA FE, NEW MEXICO 87501Form C-102
Revised 10-1-78

All distances must be from the outer boundaries of the Section.

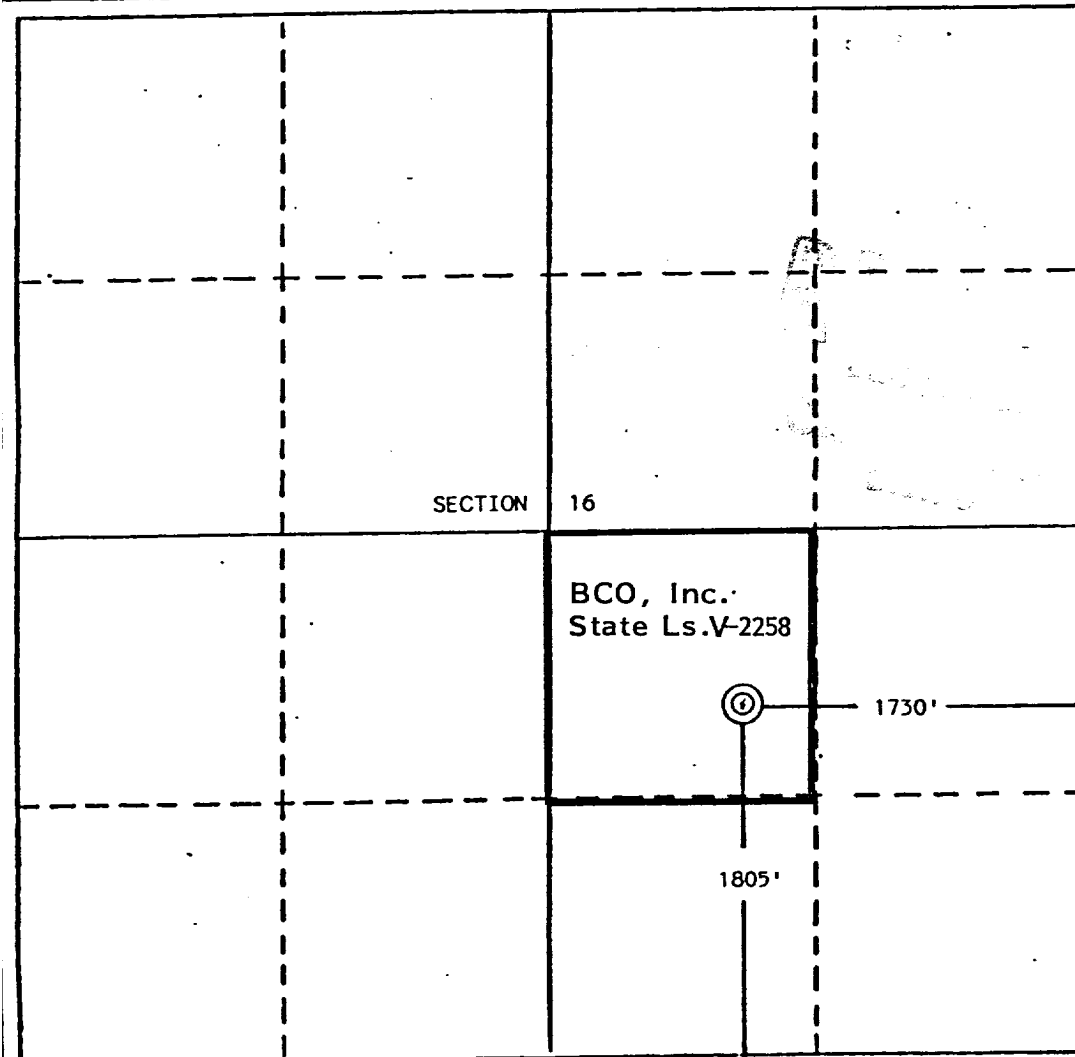
Operator BCO, Inc.		Lease State "J"		Well No. 2	
Unit Letter J	Section 16	Township 23 North	Range 7 West	County Rio Arriba	
Actual Footage Location of Well: 1805 feet from the South line and 1730 feet from the East line					
Ground Level Elev. 7382 7515	Producing Formation Gallup	Pool Lybrook Gallup Ext.		Dedicated Acreage; 40 Acres	

1. Outline the acreage dedicated to the subject well by colored pencil or hachure marks on the plat below.
2. If more than one lease is dedicated to the well, outline each and identify the ownership thereof (both as to working interest and royalty).
3. If more than one lease of different ownership is dedicated to the well, have the interests of all owners been consolidated by communitization, unitization, force-pooling, etc?

☐ Yes ☐ No If answer is "yes," type of consolidation _____

If answer is "no," list the owners and tract descriptions which have actually been consolidated. (Use reverse side of this form if necessary.) _____

No allowable will be assigned to the well until all interests have been consolidated (by communitization, unitization, forced-pooling, or otherwise) or until a non-standard unit, eliminating such interests, has been approved by the Division.



CERTIFICATION

I hereby certify that the information contained herein is true and complete to the best of my knowledge and belief.

Elizabeth B. Keeshan

Name

Elizabeth B. Keeshan

Position

Vice-President

Company

BCO, Inc.

Date

12/14/88

I hereby certify that the well location shown on this plat was plotted from field notes of actual surveys made by me or under my supervision, and that the same is true and correct to the best of my knowledge and belief.

Date Surveyed

November 25, 1988

Registered Professional Engineer
and/or Land Surveyor*Edgar L. Risenhoover*

Certificate No. 5979

Edgar L. Risenhoover, L.S.