

UNITED STATES
DEPARTMENT OF THE INTERIOR
BUREAU OF LAND MANAGEMENT

APPLICATION FOR PERMIT TO DRILL, DEEPEN, OR PLUG BACK

1a. TYPE OF WORK

DRILL ☒

DEEPEN ☐

PLUG BACK ☐

b. TYPE OF WELL

OIL
WELL ☒

GAS
WELL ☐

OTHER

2. NAME OF OPERATOR

Jack A. Cole

3. ADDRESS OF OPERATOR

P. O. Box 191, Farmington, New Mexico 87499

4. LOCATION OF WELL (Report location clearly and in accordance with any State requirements.)

At surface

740 FNL, 680 FEL

At proposed prod. zone

Same

14. DISTANCE IN MILES AND DIRECTION FROM NEAREST TOWN OR POST OFFICE*

13. DISTANCE FROM PROPOSED*
LOCATION TO NEAREST
PROPERTY OR LEASE LINE, FT.
(Also to nearest drig. unit line, if any)

18. DISTANCE FROM PROPOSED LOCATION*
TO NEAREST WELL, DRILLING, COMPLETED,
OR APPLIED FOR, ON THIS LEASE, FT.

16. NO. OF ACRES IN LEASE

2567.37

19. PROPOSED DEPTH

5735

17. NO. OF ACRES ASSIGNED
TO THIS WELL

160-jointed with Marcus A#12

20. ROTARY OR CABLE TOOLS

Rotary

21. ELEVATIONS (Show whether DF, RT, GR, etc.)

6811 GR

22. APPROX. DATE WORK WILL START*

April 1, 1989

PROPOSED CASING AND CEMENTING PROGRAM

SIZE OF HOLE	SIZE OF CASING	WEIGHT PER FOOT	SETTING DEPTH	QUANTITY OF CEMENT
12 1/4	8 5/8	24.0 lb.	250	250 sks.
7 7/8	4 1/2	10.50 lb.	5735	800 sks.

All producing intervals in Gallup formation will be stimulated as necessary.

EXHIBITS:

- "A" Location and Elevation Plat
- "B" Ten Point Compliance Program
- "C" Blowout Preventor Diagram
- "D" Multi-Point Requirements of APD

- "E" Access Road to Location
- "F" Drill Rig Layout
- "G" Fracturing Program Oayout
- "H" Location Profile
- "I" Proposed Pipeline

The gas for this well is committed.

IN ABOVE SPACE DESCRIBE PROPOSED PROGRAM: If proposal is to deepen or plug back, give data on present productive zone and proposed new productive zone. If proposal is to drill or deepen directionally, give pertinent data on subsurface locations and measured and true vertical depths. Give blowout preventer program, if any.

SIGNED Suzanne Blainett

TITLE Production Superintendent

DATE January 26, 1989

(This space for Federal or State office use)

PERMIT NO.

APPROVAL DATE

APPROVED BY

TITLE

DATE

CONDITIONS OF APPROVAL, IF ANY:

**APPROVED
AS AMENDED**
MAY 24 1989
AREA MANAGER

*See Instructions On Reverse Side

STATE OF NEW MEXICO
ENERGY AND MINERALS DEPARTMENT

P. O. BOX 2088
SANTA FE, NEW MEXICO 87501

Form C-102
Revised 10-1-78

All distances must be from the outer boundaries of the Section.

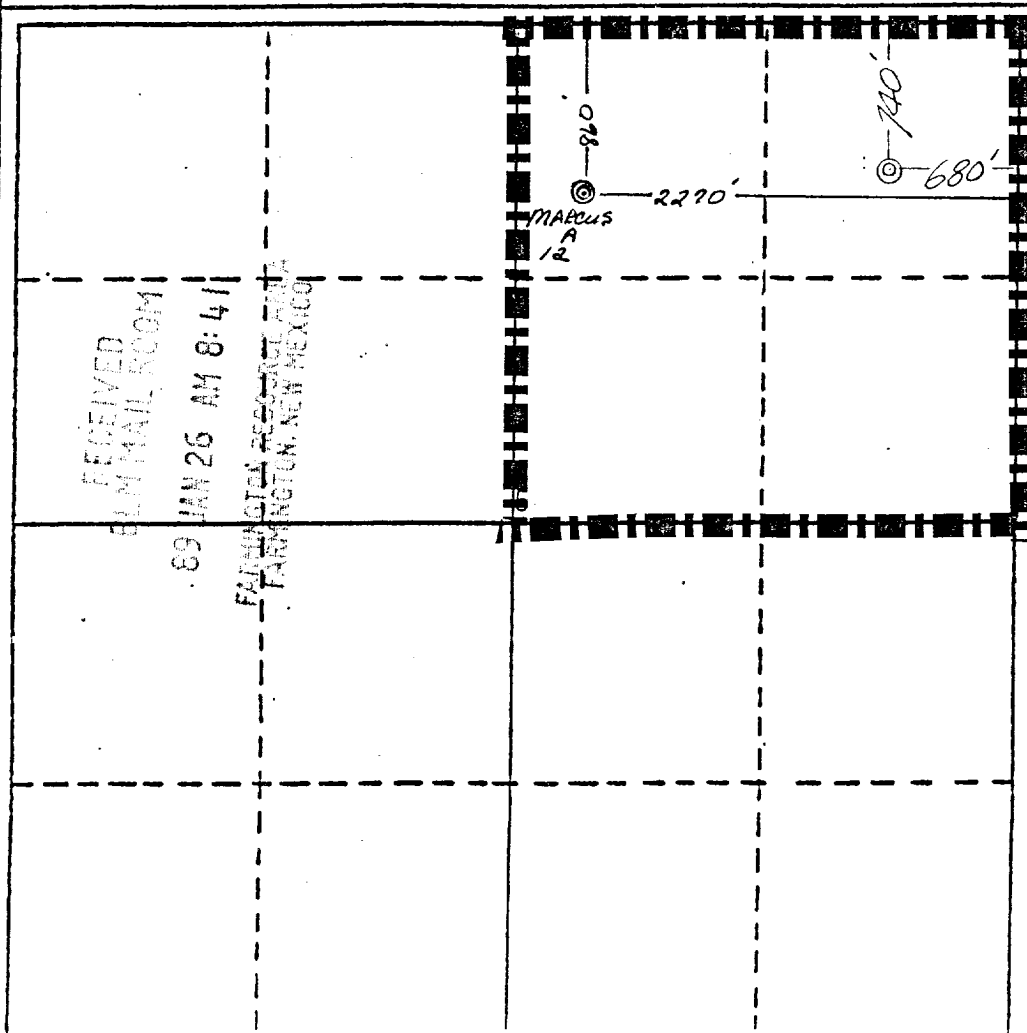
Operator JACK A. COLE			Lease RINCON		Well No. # 5
Unit Letter A	Section 5	Township 23 NORTH	Range 6 WEST	County RIO ARRIBA	
Actual Footage Location of Wells 740 feet from the NORTH line and 680 feet from the EAST line					
Ground Level Elev. 6811	Producing Formation GALLUP	Pool COUNSELORS GALLUP-DAKOTA		Dedicated Acreage 159.76 joined with Acres	

1. Outline the acreage dedicated to the subject well by colored pencil or hatchure marks on the plat below. Marcus A12
2. If more than one lease is dedicated to the well, outline each and identify the ownership thereof (both as to working interest and royalty).
3. If more than one lease of different ownership is dedicated to the well, have the interests of all owners been consolidated by communization, unitization, force-pooling, etc?

☐ Yes ☐ No If answer is "yes," type of consolidation _____

If answer is "no," list the owners and tract descriptions which have actually been consolidated. (Use reverse side of this form if necessary.) _____

No allowable will be assigned to the well until all interests have been consolidated (by communization, unitization, forced-pooling, or otherwise) or until a non-standard unit, eliminating such interests, has been approved by the Division.



CERTIFICATION

I hereby certify that the information contained herein is true and complete to the best of my knowledge and belief.

Dewayne Blancett
Name

Dewayne Blancett

Position

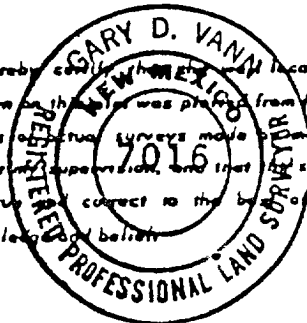
Production Superintendent

Company Jack A. Cole dba
Cole Production Co.

Date

January 26, 1989

I hereby certify that the location shown on this plat was plotted from field notes of actual surveys made by me or under my supervision, and that the same is true and correct to the best of my knowledge and belief.



Date Surveyed

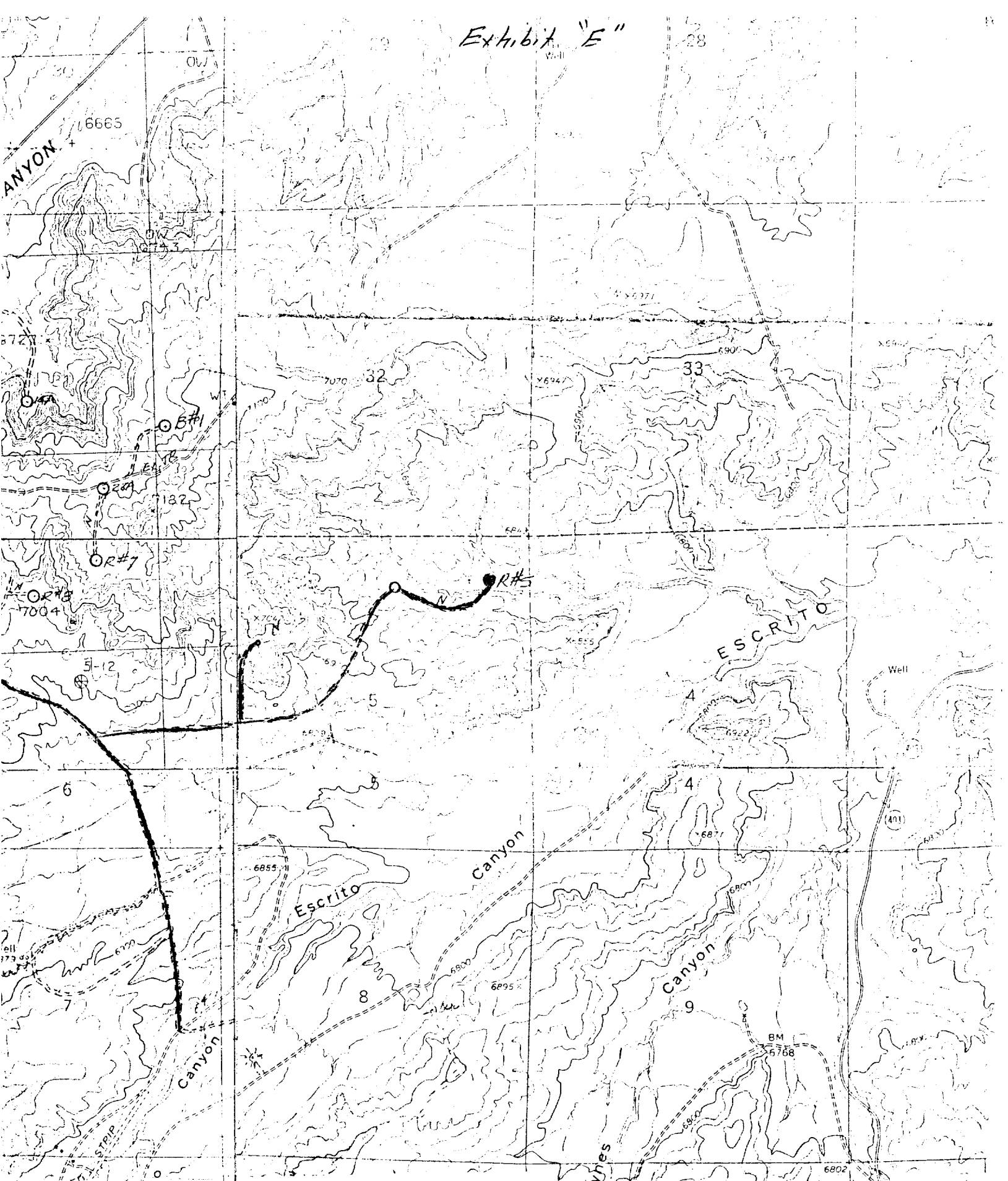
November 10, 1988

Registered Professional Engineer
and/or Land Surveyor

Gary D. Vann
Gary D. Vann

Certificate No.

7016



— New Land pipeline

JACK A. COLE
RINCON # 5
740' F/NL 680' F/EL
SEC. 5, T23N, R6W, NMPM
RIO ARRIBA COUNTY, NM