

STATE OF NEW MEXICO
ENERGY, MINERALS AND NATURAL RESOURCES DEPARTMENT
OIL CONSERVATION DIVISION

GARREY CARRUTHERS
GOVERNOR

POST OFFICE BOX 2068
STATE LAND OFFICE BUILDING
SANTA FE, NEW MEXICO 87504
(505) 827-5800

May 22, 1990

Bannon Energy Incorporated
c/o Holcomb Oil and Gas
P.O. Box 2058
Farmington, NM 87499

Attention: W.J. Holcomb

RECEIVED
MAY 29 1990
OIL CON. DIV.
DIST. 3

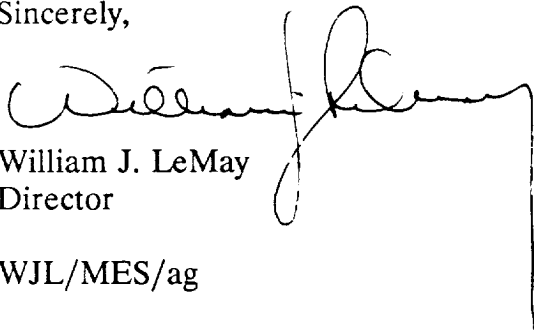
Administrative Order NSL-2799

Dear Mr. Holcomb:

Reference is made to your application dated March 7, 1990 for a non-standard oil well location for your State "2" Well No. 2 to be located 1183 feet from the North line and 1594 feet from the West line (Unit C) of Section 2, Township **23 North, Range 6 West**, NMPM, Counselors-Gallup Dakota Oil Pool, Rio Arriba County, New Mexico. Lots 3 and 4 and the S/2 NW/4 (NW/4 equivalent) of said Section 2 shall be dedicated to the well forming a 161.58-acre oil spacing and proration unit.

By the authority granted me under the provisions of Rule 5 of the Special Rules and Regulations for the Counselors-Gallup Dakota Oil Pool, as promulgated by Division Order No. R-7034, as amended, the above-described unorthodox oil location is hereby approved.

Sincerely,


William J. LeMay
Director

WJL/MES/ag

cc: Oil Conservation Division - Aztec
NM State Land Office - Santa Fe



STATE OF NEW MEXICO
ENERGY AND MINERALS DEPARTMENT
OIL CONSERVATION DIVISION
AZTEC DISTRICT OFFICE

RREY CARRUTHERS
GOVERNOR

1000 MID BRAZOS ROAD
AZTEC, NEW MEXICO 87410
(505) 334-6178

Date: 3-15-70

ATTN: Mike Stoguer

Oil Conservation Division
P.O. Box 2088
Santa Fe, NM 87504-2088

Re: Proposed MC _____
Proposed DHC _____
Proposed NSL X _____
Proposed SWD _____
Proposed WFX _____
Proposed PMX _____

Gentlemen:

I have examined the application dated 3-8-70
for the Burns Energy Inc. State 2#2
Operator Lease & Well No.

C-2-23N-6W and my recommendations are as follows:
Unit, S-T-R

Approve

Yours truly,

Ernie Bush

BANNON ENERGY INCORPORATED

3934 F.M. 1960 West, Suite 240
Houston, Texas 77068
(713) 537-9000
FAX (713) 537-8624

March 7, 1990

Oil Conservation Division
ATTN: Michael Stogner
P.O. Box 2088
Santa Fe, New Mexico 87504

Re: Non-Standard Location - State 2-2
Section 2 T23N R6W
Unit C - 1183' FNL x 1594' FWL
Counselors Gallup Dakota Pool
Rio Arriba County, New Mexico

Non-Standard Location - State 2-4
Section 2 T23N R6W
Unit K - 1422' FSL x 1758' FWL
Counselors Gallup Dakota Pool
Rio Arriba County, New Mexico

RECEIVED
MAR 08 1990
OIL CON. DIV.
DIST. 3

Dear Mr. Stogner

This letter is presented to request approval for non-standard locations for the above referenced wells. The wells were staked at these locations due to archaeologic restrictions. The archaeology surveys were conducted on December 13 and 14, 1989, respectively. Please find enclosed Technical Reports Nos. 1766 and 1768 recommending clearance for the proposed well pads and access roads. Also enclosed are copies of certified letters to offset operators, C-102s and topo maps of the area.

Should you have any questions regarding this matter, please call William Holcomb at (505) 326-0550. Thank you for your consideration in this matter.

Sincerely



W. J. Holcomb
Agent, Bannon Energy

WJH/ck

Enclosures

xc: Ernie Busch, Aztec OCD

RECEIVED

NOV 19 1943

OIL COM. DIV.
DIST. 3

Submit to Appropriate
District Office
State Lease - 4 copies
Fee Lease - 3 copies

State of New-Mexico
Energy, Minerals and Natural Resources Department

Form C-102
Revised 1-1-89

OIL CONSERVATION DIVISION

DISTRICT I
P.O. Box 1980, Hobbs, NM 88240

P.O. Box 2088

Santa Fe, New Mexico 87504-2088

DISTRICT II
P.O. Drawer DD, Artesia, NM 88210

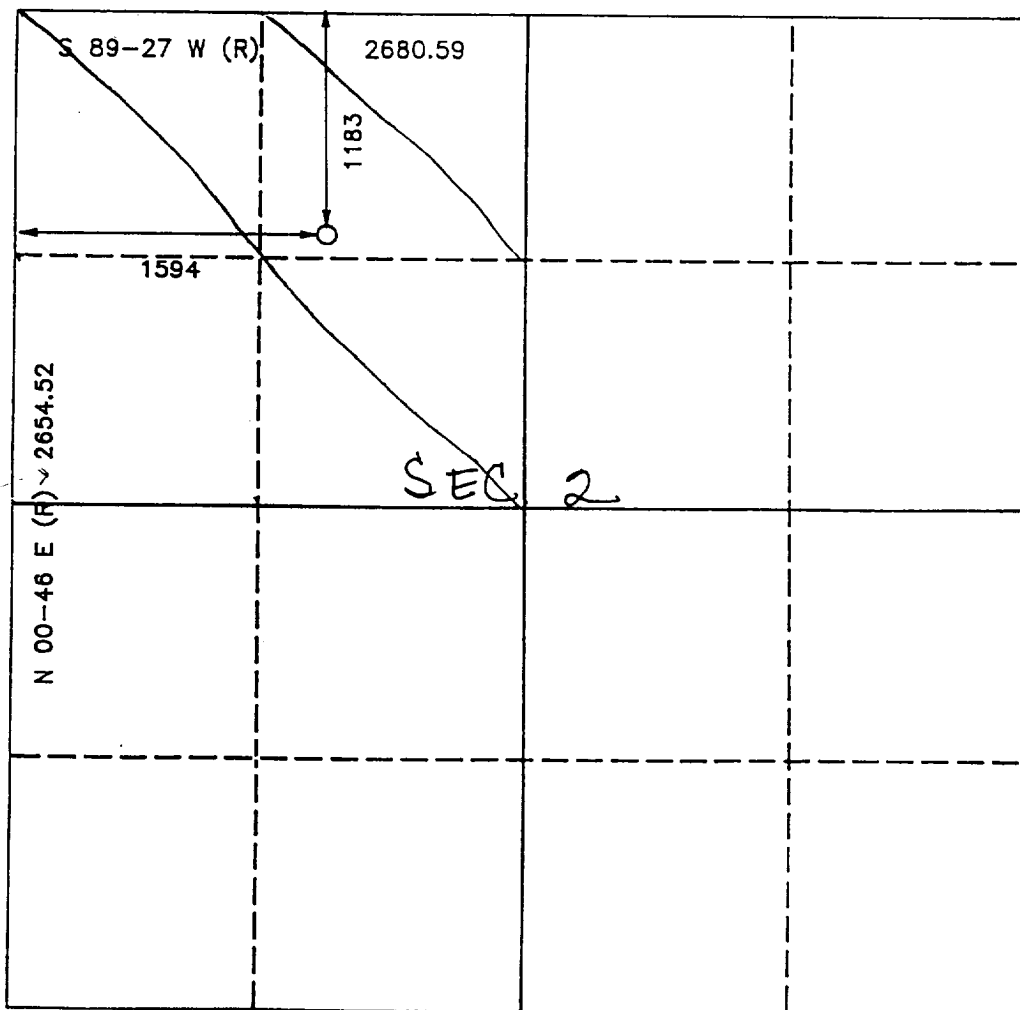
DISTRICT III
1000 Rio Brazos Rd., Aztec, NM 87410

WELL LOCATION AND ACREAGE DEDICATION PLAT

All Distances must be from the outer boundaries of the section

Operator BANNON ENERGY, INC.			Lease STATE 2		Well No. 2
Unit Letter C	Section 2	Township T.23 N.	Range R.6 W.	County RIO ARRIBA	
Actual Footage Location of Well: 1183 feet from the NORTH line and 1594 feet from the WEST line					
Ground level Elev. 6670		Producing Formation Gallup		Pool Counselors Dakota	Dedicated Acreage: 160 Acres

- Outline the acreage dedicated to the subject well by colored pencil or hatchure marks on the plat below.
- If more than one lease is dedicated to the well, outline each and identify the ownership thereof (both as to working interest and royalty).
- If more than one lease of different ownership is dedicated to the well, have the interest of all owners been consolidated by communization, unitization, force-pooling, etc?
☐ Yes ☐ No If answer is "yes" type of consolidation _____
If answer is "no" list the owners and tract descriptions which have actually been consolidated. (Use reverse side of this form if necessary).
No allowable will be assigned to the well until all interests have been consolidated (by communization, unitization, forced-pooling, or otherwise) or until a non-standard unit, eliminating such interest, has been approved by the Division.



OPERATOR CERTIFICATION

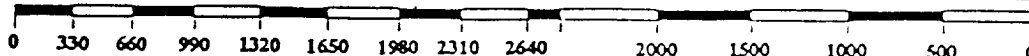
I hereby certify that the information contained herein is true and complete to the best of my knowledge and belief.

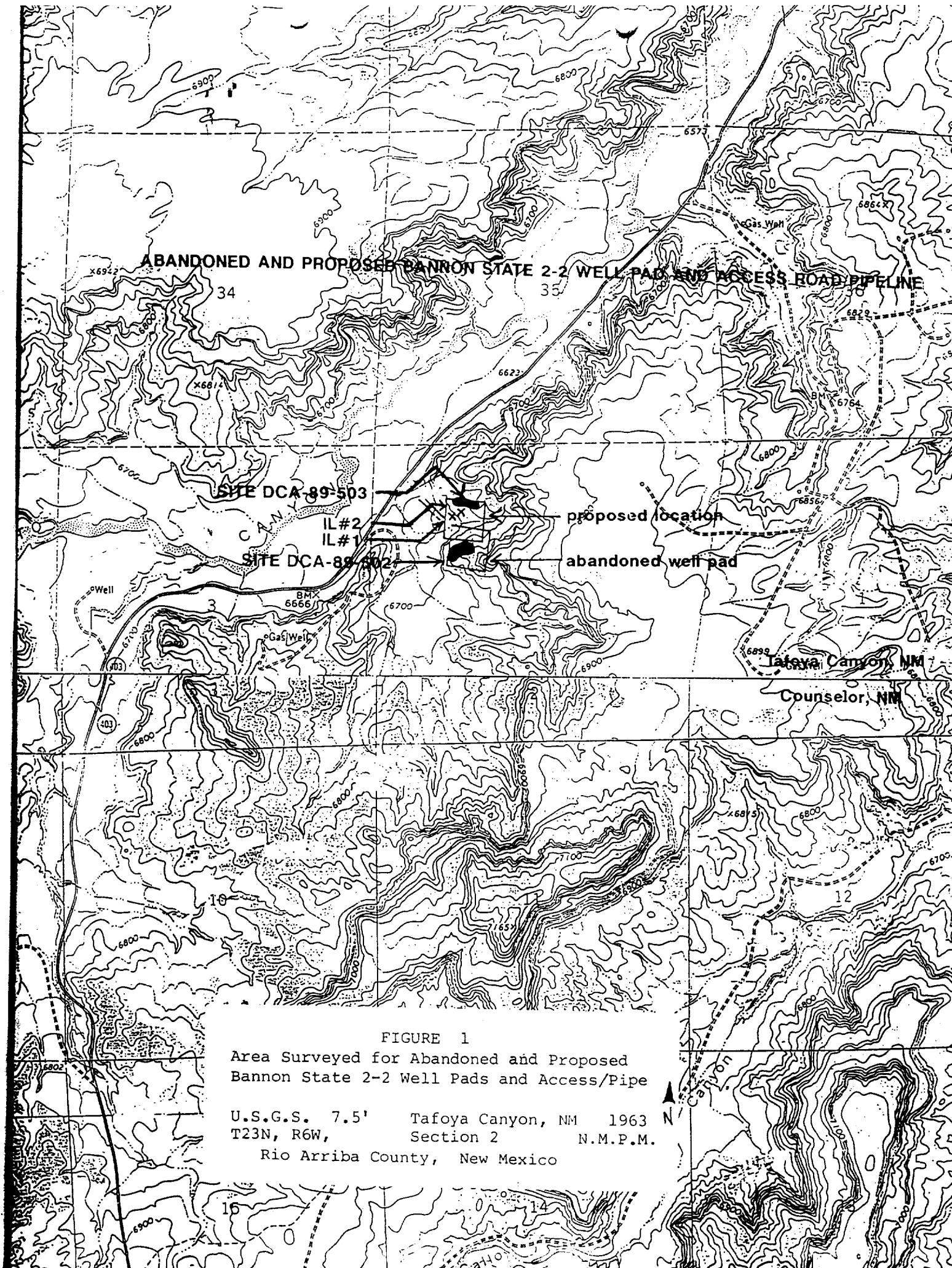
Signature *[Signature]*
Printed Name
W. J. Holcomb
Position
Agent
Company
Bannon Energy, Inc.
Date

SURVEYOR CERTIFICATION

I hereby certify that the well location shown on this plat was plotted from field notes of actual surveys made by me or under my supervision, and that the same is true and correct to the best of my knowledge and belief.

Date Surveyed
NOV 10 1988
Signature & Seal of Professional Surveyor
R. HOWARD DAGGETT
Certificate No. **9579**
Registered Professional
Land Surveyor





State 2-2
 1183' FNL x 1594' FWL
 Sec. 2 T23N R6W
 Rio Arriba Co., NM

