

UNITED STATES
DEPARTMENT OF THE INTERIOR
BUREAU OF LAND MANAGEMENT

APPLICATION FOR PERMIT TO DRILL, DEEPEN, OR PLUG BACK

1a. TYPE OF WORK

DRILL ☒

DEEPEN ☐

PLUG BACK ☐

b. TYPE OF WELL

OIL
WELL ☒

GAS
WELL ☐

OTHER

SINGLE
ZONE ☐

MULTIPLE
ZONE ☐

2. NAME OF OPERATOR

HIXON DEVELOPMENT COMPANY

3. ADDRESS OF OPERATOR

P. O. Box 2810, Farmington, New Mexico 87499

4. LOCATION OF WELL (Report location clearly and in accordance with any State requirements.*)

At surface

2140' FSL, 515' FWL, Section 15, T23N, R7W, NMMP

At proposed prod. zone

14. DISTANCE IN MILES AND DIRECTION FROM NEAREST TOWN OR POST OFFICE*

40.2 miles south of Bloomfield, New Mexico

15. DISTANCE FROM PROPOSED*

LOCATION TO NEAREST
PROPERTY OR LEASE LINE, FT.
(Also to nearest drig. unit line, if any)

515'

16. NO. OF ACRES IN LEASE

480

17. NO. OF ACRES ASSIGNED
TO THIS WELL

40

18. DISTANCE FROM PROPOSED LOCATION*
TO NEAREST WELL, DRILLING, COMPLETED,
OR APPLIED FOR, ON THIS LEASE, FT.

4270'

19. PROPOSED DEPTH

5875'

20. ROTARY OR CABLE TOOLS

Rotary

21. ELEVATIONS (Show whether DF, RT, GR, etc.)

7277' GLE

22. APPROX. DATE WORK WILL START*

April 8, 1990

23.

PROPOSED CASING AND CEMENTING PROGRAM

This action is subject to technical and
procedural review pursuant to 43 CFR 3165.3
and appeal pursuant to 43 CFR 3165.4.

| SIZE OF HOLE | SIZE OF CASING | WEIGHT PER FOOT | SETTING DEPTH | |
|--------------|----------------|-----------------|---------------|---------|
| 12-1/4 | 8-5/8 | 24# | 220 | 190 sks |
| 7-7/8 | 5-1/2 | 15.5# | 5875 | 530 sks |

It is proposed to drill the subject Lybrook Gallup oil well. This well will be evaluated on the basis of open hole logs. Please see attached Onshore Oil and Gas Order No. 1 data.

RECEIVED
MAY 21 1990
OIL CON. DIST. 3

IN ABOVE SPACE DESCRIBE PROPOSED PROGRAM: If proposal is to deepen or plug back, give data on present productive zone and proposed new productive zone. If proposal is to drill or deepen directionally, give pertinent data on subsurface locations and measured and true vertical depths. Give blowout preventer program, if any.

24.

SIGNED

John C. Corbett
John C. Corbett

TITLE Vice President-Exploration DATE March 22, 1990

(This space for Federal or State office use)

AS APPROVED

PERMIT NO.

APPROVAL DATE

APPROVED BY

TITLE

CONDITIONS OF APPROVAL, IF ANY:

NMOCD

MAY 16 1990
John C. Corbett
AREA MANAGER

*See Instructions On Reverse Side

Submit to Appropriate
District Office
State Lease - 4 copies
Fee Lease - 3 copies

STATE OF NEW MEXICO
Energy, Minerals and Natural Resources Department

Form C-102
Revised 1-1-89

OIL CONSERVATION DIVISION

P.O. Box 2088
Santa Fe, New Mexico 87504-2088

DISTRICT I
P.O. Box 1980, Hobbs, NM 88240

DISTRICT II
P.O. Drawer DD, Artesia, NM 88210

DISTRICT III
1000 Rio Brazos Rd., Aztec, NM 87410

WELL LOCATION AND ACREAGE DEDICATION PLAT

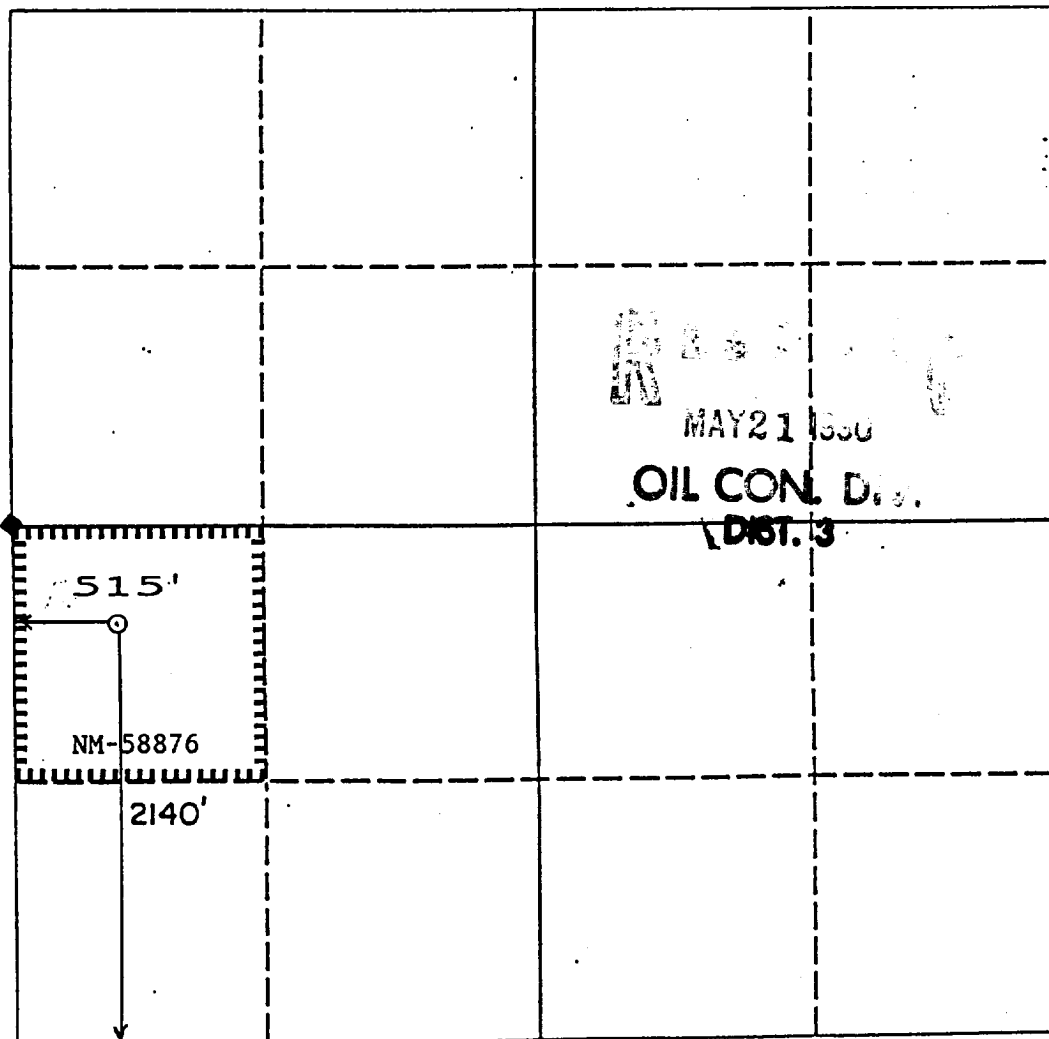
All Distances must be from the outer boundaries of the section

| | | | | | |
|--|----------------------|-----------------------------|----------------------------|-----------------------------|--|
| Operator HIXON DEVELOPMENT COMPANY | | | Lease Eric Hixon | | Well No. # 2 Erie Hixon |
| Unit Letter L | Section 15 | Township 23 North | Range 7 West | County Rio Arriba | |

Actual Footage Location of Well:
2140' feet from the **South** line and **515** feet from the **West** line

| | | | |
|------------------------------------|--------------------------------------|-------------------------------|---------------------------------------|
| Ground level Elev. 7277' | Producing Formation Gallup | Pool Lybrook Gallup | Dedicated Acreage: 40 Acres |
|------------------------------------|--------------------------------------|-------------------------------|---------------------------------------|

1. Outline the acreage dedicated to the subject well by colored pencil or hatchure marks on the plat below.
2. If more than one lease is dedicated to the well, outline each and identify the ownership thereof (both as to working interest and royalty).
3. If more than one lease of different ownership is dedicated to the well, have the interest of all owners been consolidated by communitization, unitization, force-pooling, etc.?
☐ Yes ☐ No If answer is "yes" type of consolidation _____
If answer is "no" list the owners and tract descriptions which have actually been consolidated. (Use reverse side of this form if necessary.)
No allowable will be assigned to the well until all interests have been consolidated (by communitization, unitization, forced-pooling, or otherwise) or until a non-standard unit, eliminating such interest, has been approved by the Division.



OPERATOR CERTIFICATION

I hereby certify that the information contained herein is true and complete to the best of my knowledge and belief.

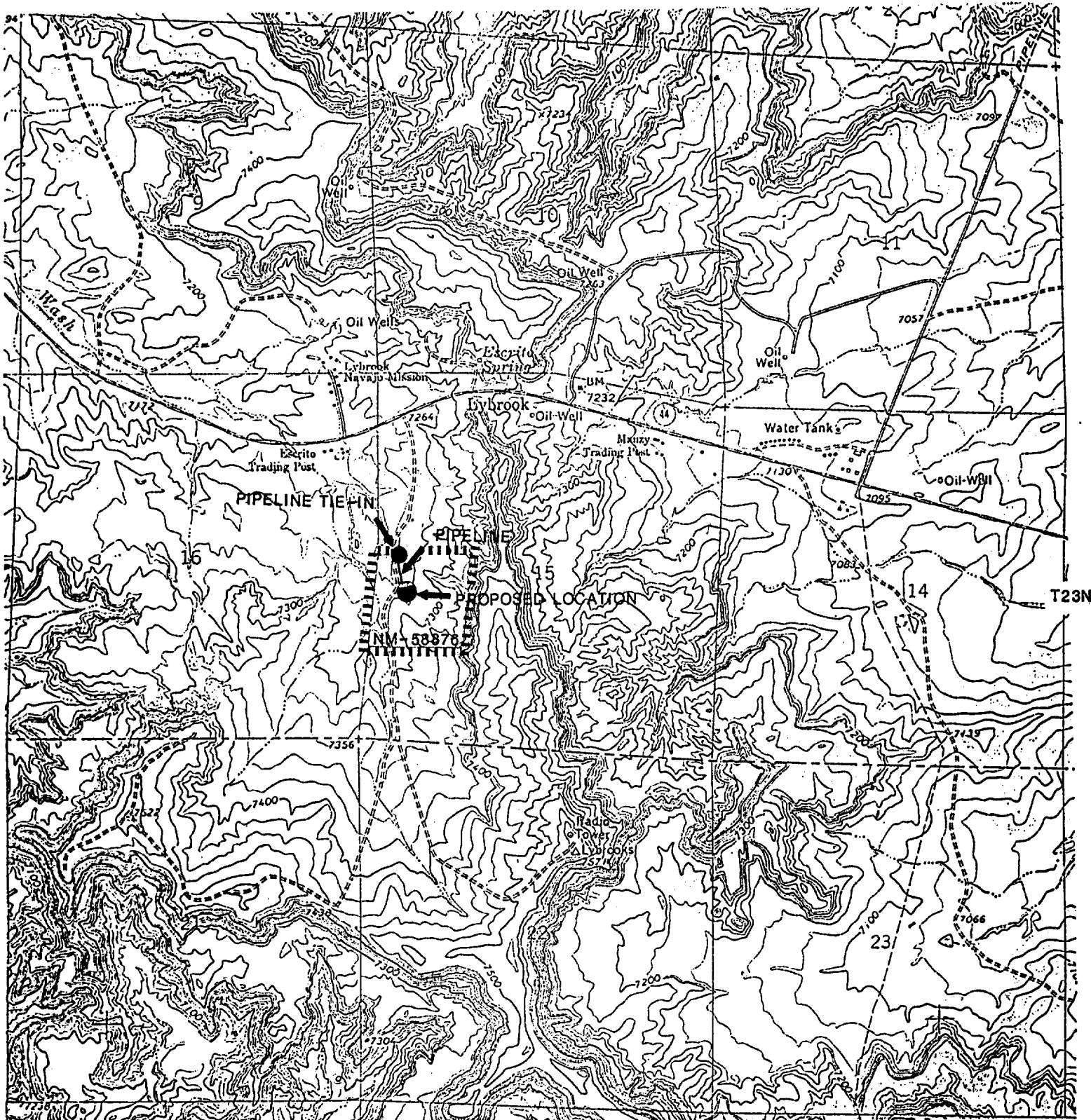
Signature
John C. Corbett
Printed Name
John C. Corbett
Position
Vice President-Exploration
Company
Hixon Development Company
Date
March 7, 1990

SURVEYOR CERTIFICATION

I hereby certify that the well location shown on this plat was plotted from field notes of actual surveys made by me or under my supervision, and that the same is true and correct to the best of my knowledge and belief.

Date Surveyed
2-7-90
Signature & Seal of Professional Surveyor
Donald H. Huddleston
Certificate No. **6844**
NEW MEXICO
REGISTERED LAND SURVEYOR

R 7 W



HIXON DEVELOPMENT COMPANY

Eric Hixon No. 2
2140' FSL, 515' FWL
Section 15, T23N, R7W
Rio Arriba County, NM