

UNITED STATES
DEPARTMENT OF THE INTERIOR
BUREAU OF LAND MANAGEMENT

APPLICATION FOR PERMIT TO DRILL, DEEPEN, OR PLUG BACK

1a. TYPE OF WORK

DRILL ☒

DEEPEN ☐

PLUG BACK ☐

b. TYPE OF WELL

OIL
WELL ☐

GAS
WELL ☐

OTHER ☐

2. NAME OF OPERATOR

Chace Oil Company, Inc.

3. ADDRESS OF OPERATOR

313 Washington SE, Albuquerque, NM 87108

4. LOCATION OF WELL (Report location clearly and in accordance with any State requirements)

At surface

429' FWL & 938' FNL, Unit 'D', Section 12, T23N, R4W

At proposed prod. zone

14. DISTANCE IN MILES AND DIRECTION FROM NEAREST TOWN OR POST OFFICE*

15 miles west-southwest of Lindrith, New Mexico

15. DISTANCE FROM PROPOSED*

LOCATION TO NEAREST 938' from lease line

PROPERTY OR LEASE LINE, FT. (Also to nearest drig. unit line, if any) 429' from unit

18. DISTANCE FROM PROPOSED LOCATION*

TO NEAREST WELL, DRILLING, COMPLETED,
OR APPLIED FOR, ON THIS LEASE, FT.

1300'

16. NO. OF ACRES IN LEASE

2560

19. PROPOSED DEPTH

7675'

17. NO. OF ACRES ASSIGNED

TO THIS WELL

40

20. ROTARY OR CABLE TOOLS

Rotary

21. ELEVATIONS (Show whether DF, RT, GR, etc.)

22. APPROX. DATE WORK WILL START*

6/15/86

This action is subject to technical and

procedural review pursuant to 43 CFR 3165.2

and appeal pursuant to 43 CFR 3165.4.

SIZE OF HOLE	SIZE OF CASING	WEIGHT PER FOOT	SETTING DEPTH	DRILLING OPERATIONS AUTHORIZED ARE SUBJECT TO COMPLIANCE WITH ATTACHED GENERAL REQUIREMENTS
12 1/4"	8 5/8"	24# (J-55)	225'	225 sks (405 cf) Class B cement
7 7/8"	4 1/2"	11.6# (N-80)	7675'	1st stage: 750 sks (1350 cf) 50/50 pozmix 2nd stage: 505 sks (909 cf) 40/60 pozmix (12% gel) 40 sks (72 cf) Class B cement

Drill 230' of 12 1/4" surface hole. Set 225' of 8 5/8" casing. Cement to surface with 225 sks (405 cf) cement. Using a water base mud (15% oil) and Schaeffer 5000# standard doublegate hydraulic BOP, drill 7 7/8" hole to 7675' to test the Dakota formation.

Logging program: Run Dil, Caliper, GR, SP, FDC-CNL from T.D. to surface.

Estimated tops:

Ojo Alamo	2693'	Point Lookout	5238'	Dakota 'A'	7344'
Picture Cliffs	3108'	Gallup	5938'	Dakota 'D'	7484'
Chacra	3458'	Tocito	6950'	Burro Canyon	7588'
Cliff House	4658'	Greenhorn	7253'		

IN ABOVE SPACE DESCRIBE PROPOSED PROGRAM: If proposal is to deepen or plug back, give data on present productive zone and proposed new productive zone. If proposal is to drill or deepen directionally, give pertinent data on subsurface locations and measured and true vertical depths. Give blowout preventer program, if any.

24.

SIGNED

Frank Wilber

TITLE Vice President Production

DATE 8/9/88

(This space for Federal or State office use)

PERMIT NO.

APPROVAL DATE

APPROVED BY

TITLE

DATE

CONDITIONS OF APPROVAL, IF ANY:

NMOCC

*See Instructions On Reverse Side

Title 18 U.S.C. Section 1001, makes it a crime for any person knowingly and willfully to make to any department or agency of the United States any false, fictitious or fraudulent statements or representations as to any matter within its jurisdiction.

All distances must be from the outer boundaries of the Section.

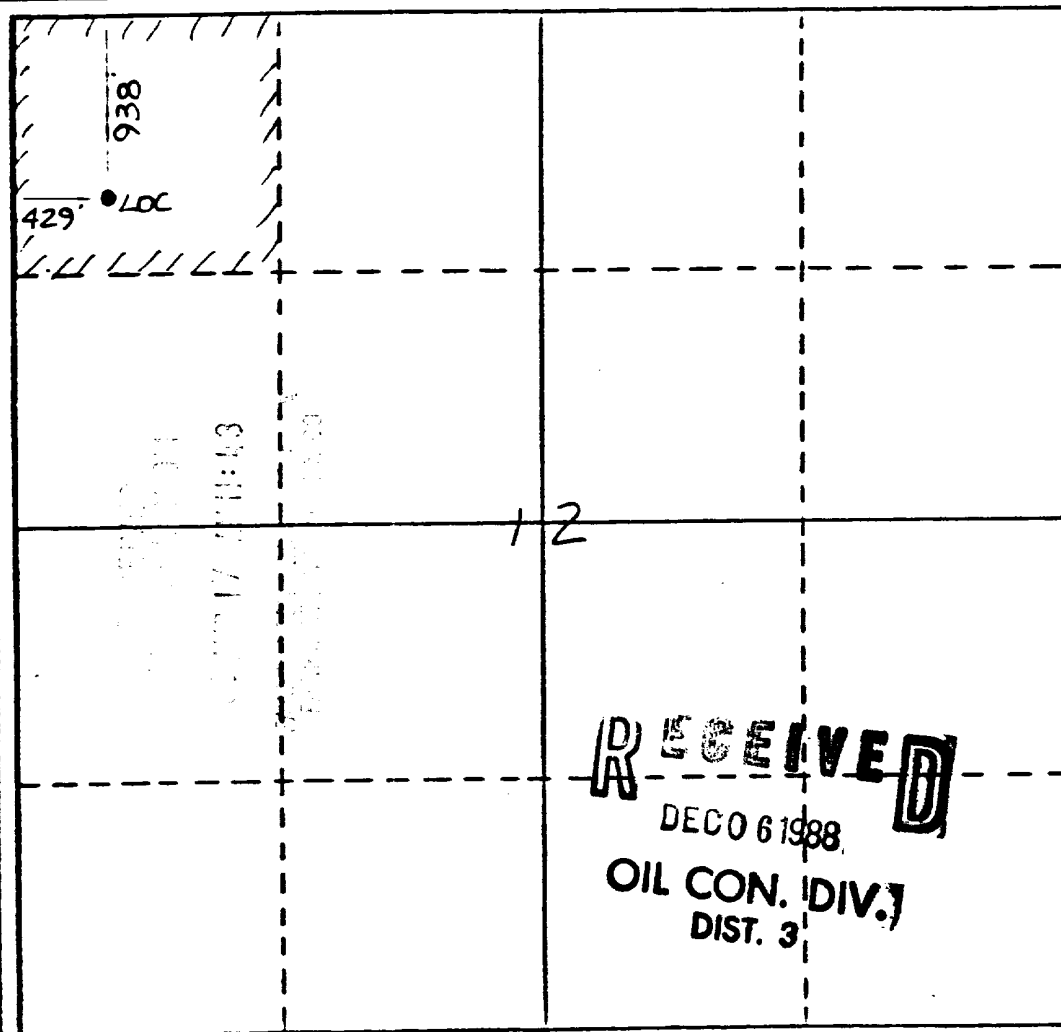
Operator CHACE OIL COMPANY		Lease JICARILLA Tribal Cont-47		Well No. 30
Unit Letter D	Section 12	Township 23 NORTH	Range 4 WEST	County RIO ARriba
Actual Footage Location of Well: 938' feet from the NORTH line and 429' feet from the WEST line				
Ground Level Elev. 7430'	Producing Formation Gallup - Dakota	Pool South Lindrieth Gallup - Dakota	Dedicated Acreage: 40 Acres	

1. Outline the acreage dedicated to the subject well by colored pencil or hatchure marks on the plat below.
2. If more than one lease is dedicated to the well, outline each and identify the ownership thereof (both as to working interest and royalty).
3. If more than one lease of different ownership is dedicated to the well, have the interests of all owners been consolidated by communitization, unitization, force-pooling, etc?

☐ Yes ☐ No If answer is "yes," type of consolidation _____

If answer is "no," list the owners and tract descriptions which have actually been consolidated. (Use reverse side of this form if necessary.) _____

No allowable will be assigned to the well until all interests have been consolidated (by communitization, unitization, forced-pooling, or otherwise) or until a non-standard unit, eliminating such interests, has been approved by the Division.



CERTIFICATION

I hereby certify that the information contained herein is true and complete to the best of my knowledge and belief.

Monte Anderson

Name

Geologist

Position

Chace Oil Comp.

Company

1-30-86

Date

I hereby certify that the well location shown on this plat was plotted from field notes of actual surveys made by me or under my supervision, and that the same is true and correct to the best of my knowledge and belief.



Date Surveyed

1-21-86

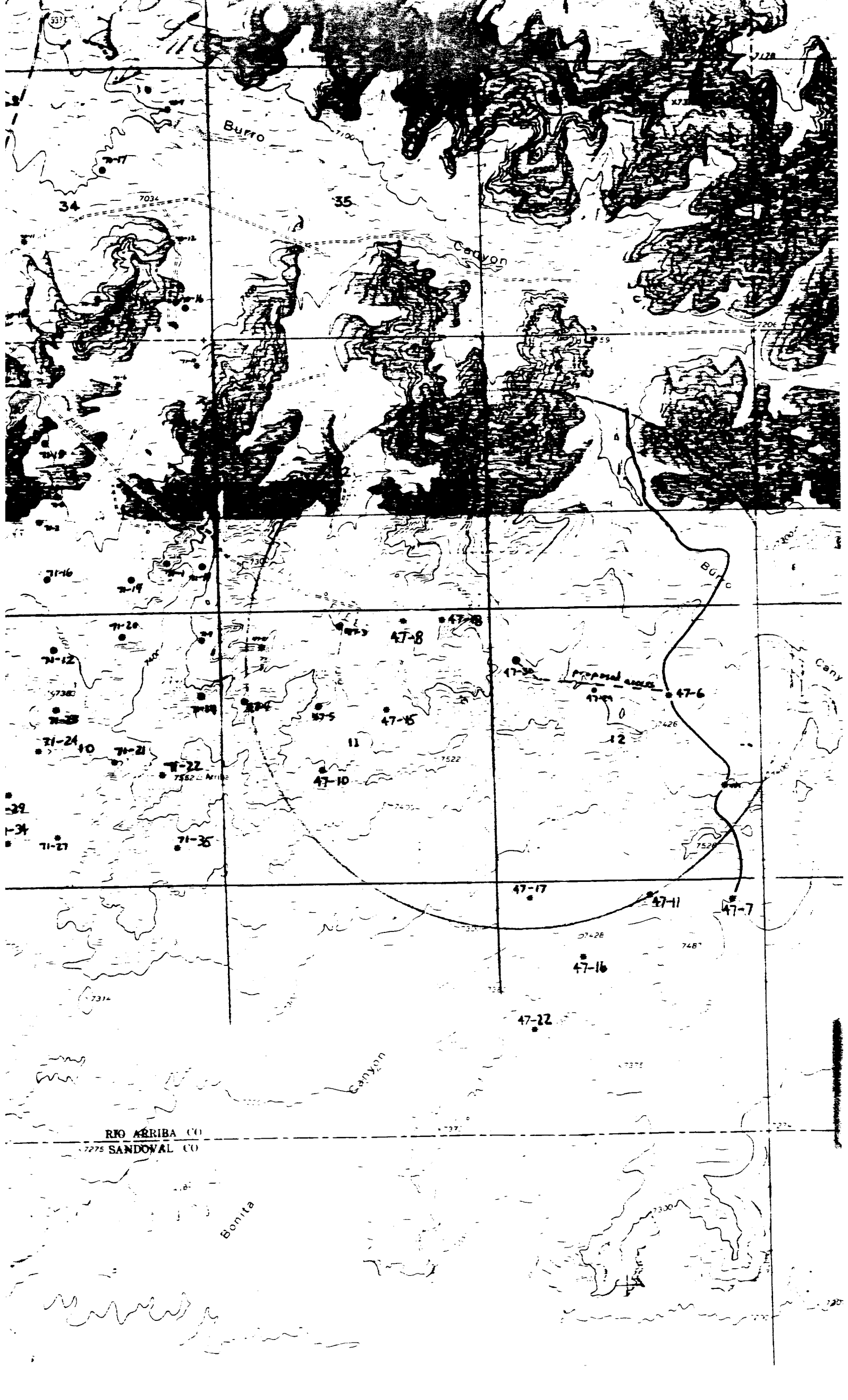
Registered Professional Engineer and/or Land Surveyor

Mark C. Edwards

Certificate No.

6857

RECEIVED
DEC 6 1988
OIL CON. DIV.
DIST. 3



RIO ARRIBA CO
SANDOVAL CO

Bonita

47-16

47-22

47-8

47-15

47-10

47-17

748'

752'

7426

12

47-6

Proposed canal

47-30

47-28

47-5

47-5

71-24

71-21

71-22

71-21

71-24

71-23

71-12

71-20

71-16

71-19

71-17

7034

35

34

Burro

Canyon

Cany

7128

7206

7100

X72

33

7275

7276

7300

7370

7371

7372

7373

7374

7375

7376

7377

7378

7379

7380

7381

7382

7383

7384

7385

7386

7387

7388

7389

7390

7391

7392

7393

7394

7395

7396

7397

7398

7399

7400

7401

7402

7403

7404

7405

7406

7407

7408

7409

7410

7411

7412

7413

7414

7415

7416

7417

7418

7419

7420

7421

7422

7423

7424

7425

7426

7427

7428

7429

7430

7431

7432

7433

7434

7435

7436

7437

7438

7439

7440

7441

7442

7443

7444

7445

7446

7447

7448

7449

7450

7451

7452

7453

7454

7455

7456

7457

7458

7459

7460

7461

7462

7463

7464

7465

7466

7467

7468

7469

7470

7471

7472

7473

7474

7475

7476

7477

7478

7479

7480

7481

7482

7483

7484

7485

7486

7487

7488

7489

7490

7491

7492

7493

7494

7495

7496

7497

7498

7499

7500

7501

7502

7503

7504

7505

7506

7507

7508

7509

7510

7511

7512

7513

7514

7515

7516

7517

7518

7519

7520

7521

7522

7523

7524

7525

7526

7527

7528

7529

7530

7531

7532

7533

7534

7535

7536

7537

7538

7539

7540

7541

7542

7543

7544

7545

7546

7547

7548

7549

7550

7551

7552

7553

7554

7555

7556

7557

7558

7559

7560

7561

7562

7563

7564

7565

7566

7567

7568

7569

7570

7571

7572

7573

7574

7575

7576

7577

7578

7579

7580

7581

7582

7583

7584

7585

7586

7587

7588

7589

7590

7591

7592

7593

7594

7595

7596

7597

7598

7599

7600

7601

7602

7603

7604

7605

7606

7607

7608

7609

7610

7611

7612

7613

7614

7615

7616

7617

7618

7619

7620

7621

7622

7623

7624

7625

7626

7627

7628

7629

7630

7631

7632

7633

7634

7635

7636

7637

7638

7639

7640

7641

7642

7643

7644

7645

7646

7647

7648

7649

7650

7651

7652

7653

7654

7655

7656