

Submit to Appropriate
District Office
State Lease - 6 copies
Fee Lease - 5 copies

State of New Mexico
Energy, Minerals and Natural Resources Department

Form C-101
Revised 1-1-89

DISTRICT I
P.O. Box 1980, Hobbs, NM 88240

DISTRICT II
P.O. Drawer DD, Artesia, NM 88210

DISTRICT III
1000 Rio Brazos Rd., Aztec, NM 87410

OIL CONSERVATION DIVISION

P.O. Box 2088
Santa Fe, New Mexico 87504-2088

API NO. (assigned by OCD on New Wells)

7-039-25138

5. Indicate Type of Lease

STATE ☒

FEE ☐

6. State Oil & Gas Lease No.

V-2258

7. Lease Name or Unit Agreement Name

STATE "J"

8. Well No.

6

9. Pool name or Wildcat

LYBROOK GALLUP

APPLICATION FOR PERMIT TO DRILL, DEEPEN, OR PLUG BACK

1a. Type of Work:

DRILL ☒

RE-ENTER ☐

DEEPEN ☐

PLUG BACK ☐

b. Type of Well:

OIL
WELL ☒

GAS
WELL ☐

OTHER ☐

SINGLE
ZONE ☒

MULTIPLE
ZONE ☐

2. Name of Operator

BCO, INC.

3. Address of Operator

135 GRANT, SANTA FE, NEW MEXICO 87501

4. Well Location

Unit Letter

P

: 900

Feet From The

SOUTH

Line and

400

Feet From The

EAST

Line

Section 16

Township 23N

Range 7W

NMPM

RIO ARRIBA County

10. Proposed Depth

5800'

11. Formation

GALLUP

12. Rotary or C.T.

ROTARY

13. Elevations (Show whether DF, RT, GR, etc.)

GL: 7295'

KB: 7307'

14. Kind & Status Plug. Bond

50,000 BLANKET PLUGGING

15. Drilling Contractor

WALTERS
DRILLING

16. Approx. Date Work will start

01 MARCH 1992

17. PROPOSED CASING AND CEMENT PROGRAM

SIZE OF HOLE	SIZE OF CASING	WEIGHT PER FOOT	SETTING DEPTH	SACKS OF CEMENT	EST. TOP
12.250	8.625"	24# J-55	360'	275	SURFACE
7.875	4.500"	11.6# J-55	5800'	1550	SURFACE

Plan to drill a 12.250" hole and set 360' of 8.625" casing. Thence drill a 7 7/8" hole to total depth with gel-water mud program to test Gallup formation. Plan to run dual induction and density log. If productive, will set 4 1/2" casing and cement in two stages with stage tool at +/- 4900'. Cement volumes and location of the stage tool will be adjusted after logging to ensure that cement is successfully circulated.

Well will be perforated, fracture stimulated, and placed on production following the drilling process.

APPROVAL EXPIRES 5-13-92
UNLESS DRILLING IS COMMENCED.
SPUD NOTICE MUST BE SUBMITTED
WITHIN 10 DAYS

IN ABOVE SPACE DESCRIBE PROPOSED PROGRAM: IF PROPOSAL IS TO DEEPEN OR PLUG BACK, GIVE DATA ON PRESENT PRODUCTIVE ZONE AND PROPOSED NEW PRODUCTIVE ZONE. GIVE BLOWOUT PREVENTER PROGRAM, IF ANY.

I hereby certify that the information above is true and complete to the best of my knowledge and belief.

SIGNATURE

TITLE

PETROLEUM ENGINEER

DATE 11/4/91

TYPE OR PRINT NAME

TELEPHONE NO.

(This space for State Use)

APPROVED BY

TITLE

DEPUTY OIL & GAS INSPECTOR, DIST. #3

DATE

NOV 13 1991

CONDITIONS OF APPROVAL, IF ANY:

Submit to Appropriate
District Office
State Lease - 4 copies
Fee Lease - 3 copies

State of New Mexico
Energy, Minerals and Natural Resources Department

Form C-102
Revised 1-1-89

OIL CONSERVATION DIVISION

DISTRICT I
P.O. Box 1980, Hobbs, NM 88240

P.O. Box 2088

Santa Fe, New Mexico 87504-2088

DISTRICT II
P.O. Drawer DD, Artesia, NM 88210

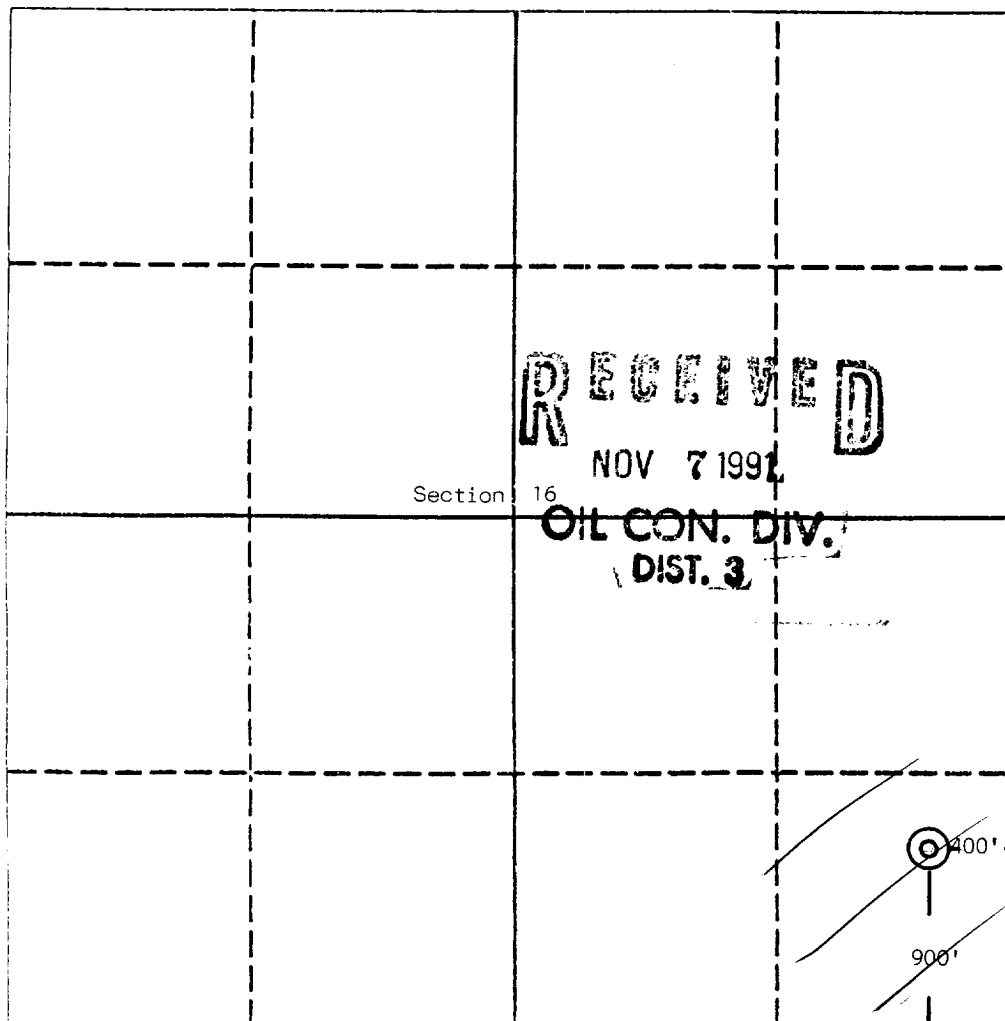
DISTRICT III
1000 Rio Brazos Rd., Aztec, NM 87410

WELL LOCATION AND ACREAGE DEDICATION PLAT

All Distances must be from the outer boundaries of the section

Operator BCO, Inc.		Lease State J		Well No. 6
Unit Letter P	Section 16	Township 23 North	Range 7 West	County Rio Arriba
Actual Footage Location of Well: 900 feet from the South line and 400 feet from the East line				
Ground level Elev. 7295 Est.	Producing Formation <i>Gallup</i>	Pool <i>Lycerbrook</i>	Dedicated Acreage: <i>40</i> Acres	

1. Outline the acreage dedicated to the subject well by colored pencil or hatchure marks on the plat below.
2. If more than one lease is dedicated to the well, outline each and identify the ownership thereof (both as to working interest and royalty).
3. If more than one lease of different ownership is dedicated to the well, have the interest of all owners been consolidated by communization, unitization, force-pooling, etc.?
☐ Yes ☐ No If answer is "yes" type of consolidation _____
If answer is "no" list the owners and tract descriptions which have actually been consolidated. (Use reverse side of this form if necessary.) _____
No allowable will be assigned to the well until all interests have been consolidated (by communization, unitization, forced-pooling, or otherwise) or until a non-standard unit, eliminating such interest, has been approved by the Division.



OPERATOR CERTIFICATION

I hereby certify that the information contained herein is true and complete to the best of my knowledge and belief.

Signature

Printed Name

NEEL L. DUNCAN

Position

PETROLEUM ENGINEER

Company

BCO, INC

Date

04 NOV 91

SURVEYOR CERTIFICATION

I hereby certify that the well location shown on this plat was plotted from field notes of actual surveys made by me or under my supervision, and that the same is true and correct to the best of my knowledge and belief.

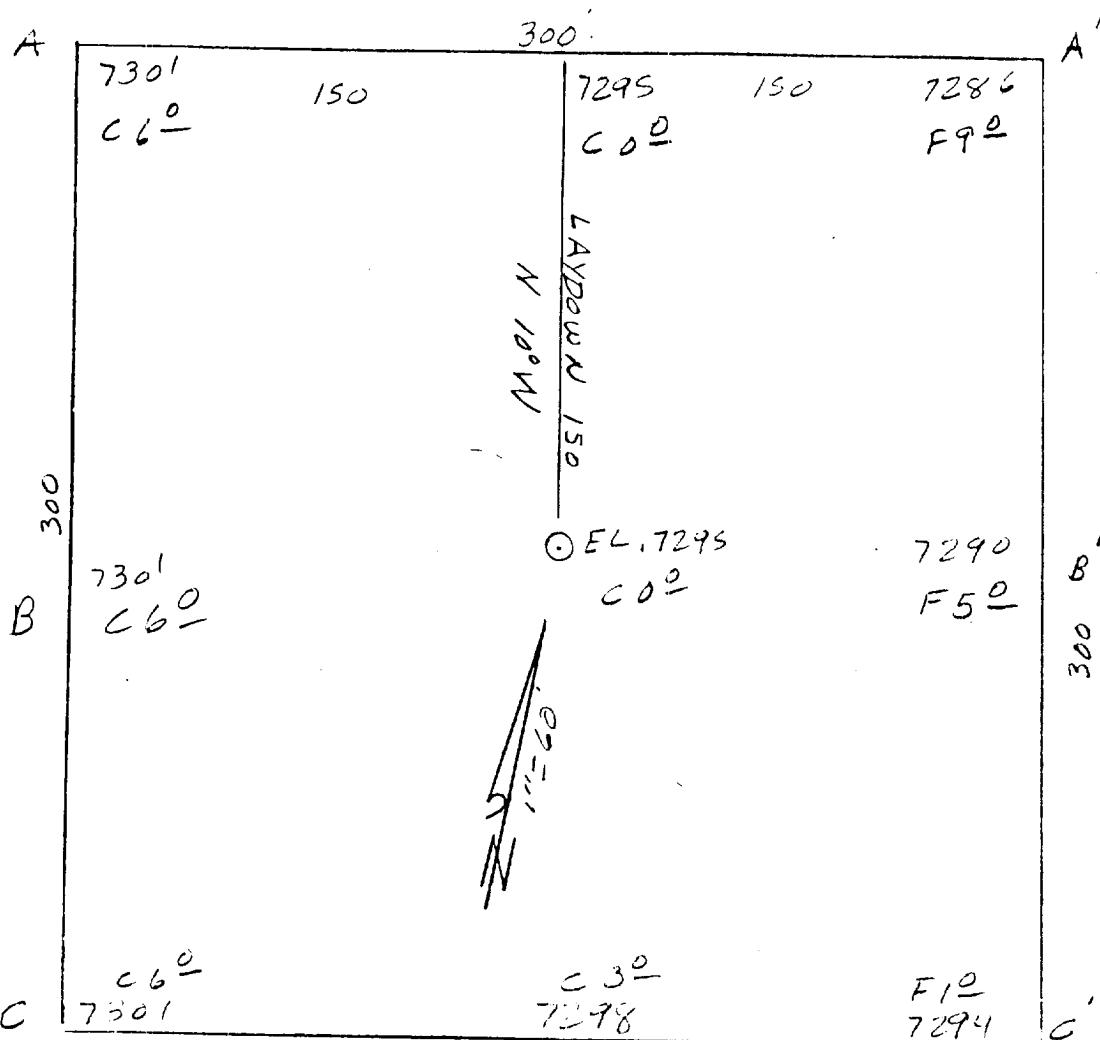
Date Surveyed

October 23, 1991

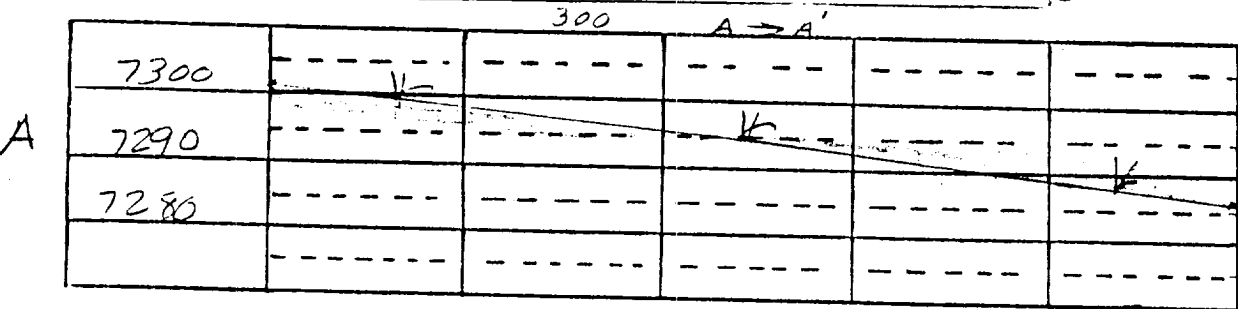
Signature & Seal of
Professional Surveyor

Edgar L. Risenhoover
Certificate No. 5979

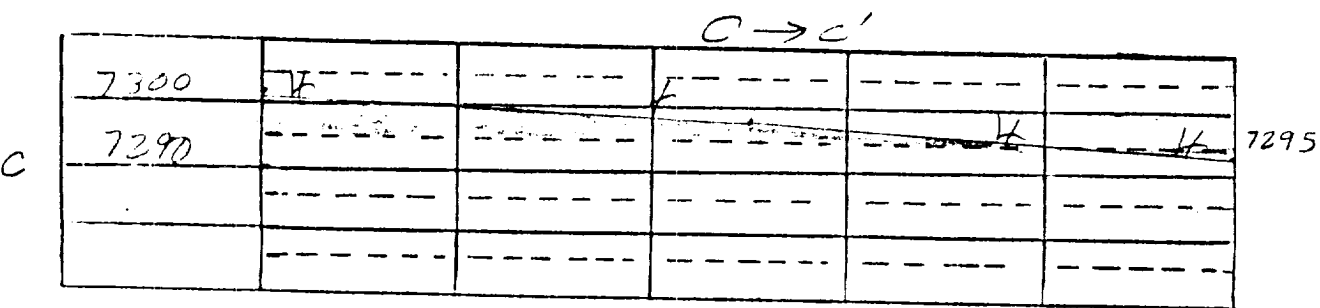
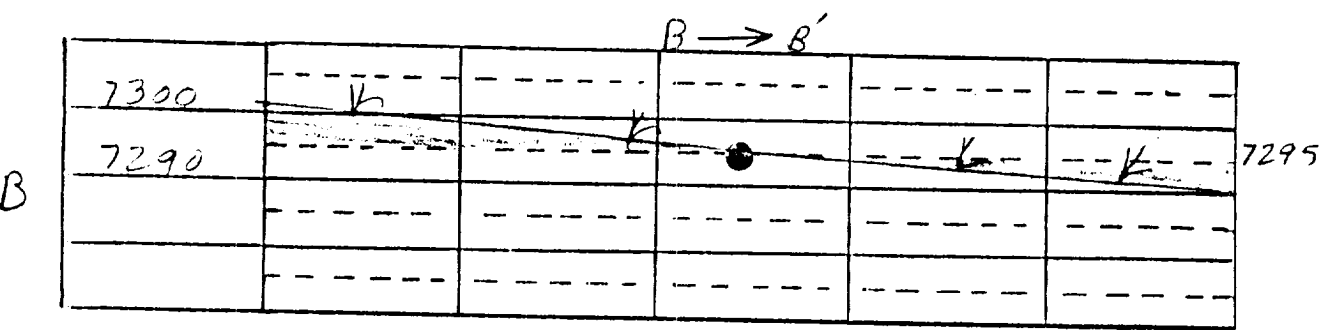
Edgar L. Risenhoover, P.S.



BCO, Inc.
 OPERATOR
 State J #6
 WELL NAME and NUMBER
 900' F/SL 400' F/EL
 FOOTAGES
 16 23N 7W
 SEC. TWP. RGE.
 Rio Arriba, New Mexico
 COUNTY STATE
 October 23, 1991
 DATE

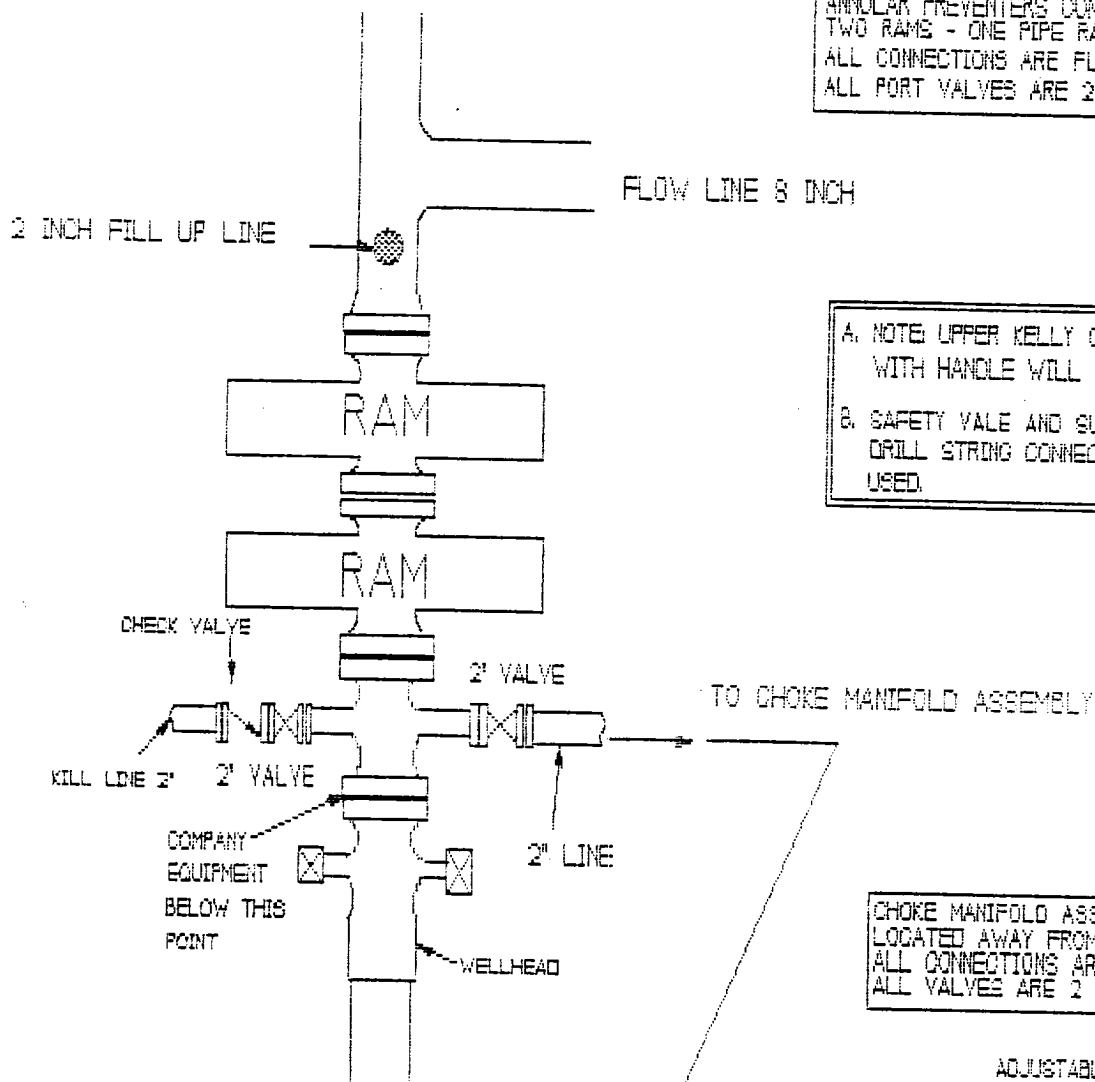


SCALE
 Horiz. 1" = 60'
 Vert. 1" = 30'



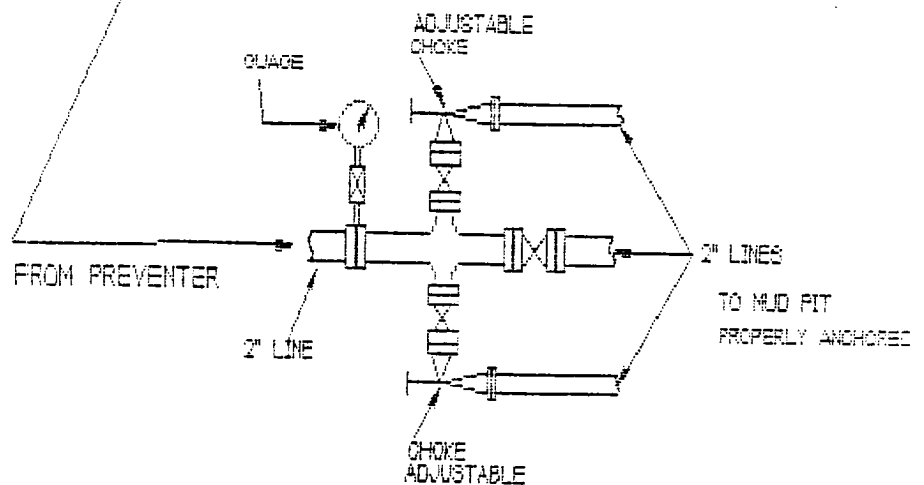
BCO, Inc.

BLOWOUT PREVENTER ASSEMBLY
ANNULAR PREVENTERS CONSIST OF -
TWO RAMS - ONE PIPE RAM AND ONE BLIND RAM
ALL CONNECTIONS ARE FLANGED
ALL PORT VALVES ARE 2 INCH



A. NOTE: UPPER KELLY COCK VALVE
WITH HANDLE WILL BE AVAILABLE
B. SAFETY VALE AND SUBS TO FIT ALL
DRILL STRING CONNECTIONS WILL BE
USED.

CHOKER MANIFOLD ASSEMBLY
LOCATED AWAY FROM SUBSTRUCTURE
ALL CONNECTIONS ARE FLANGED
ALL VALVES ARE 2 INCH



"2-H" BOP SYSTEM