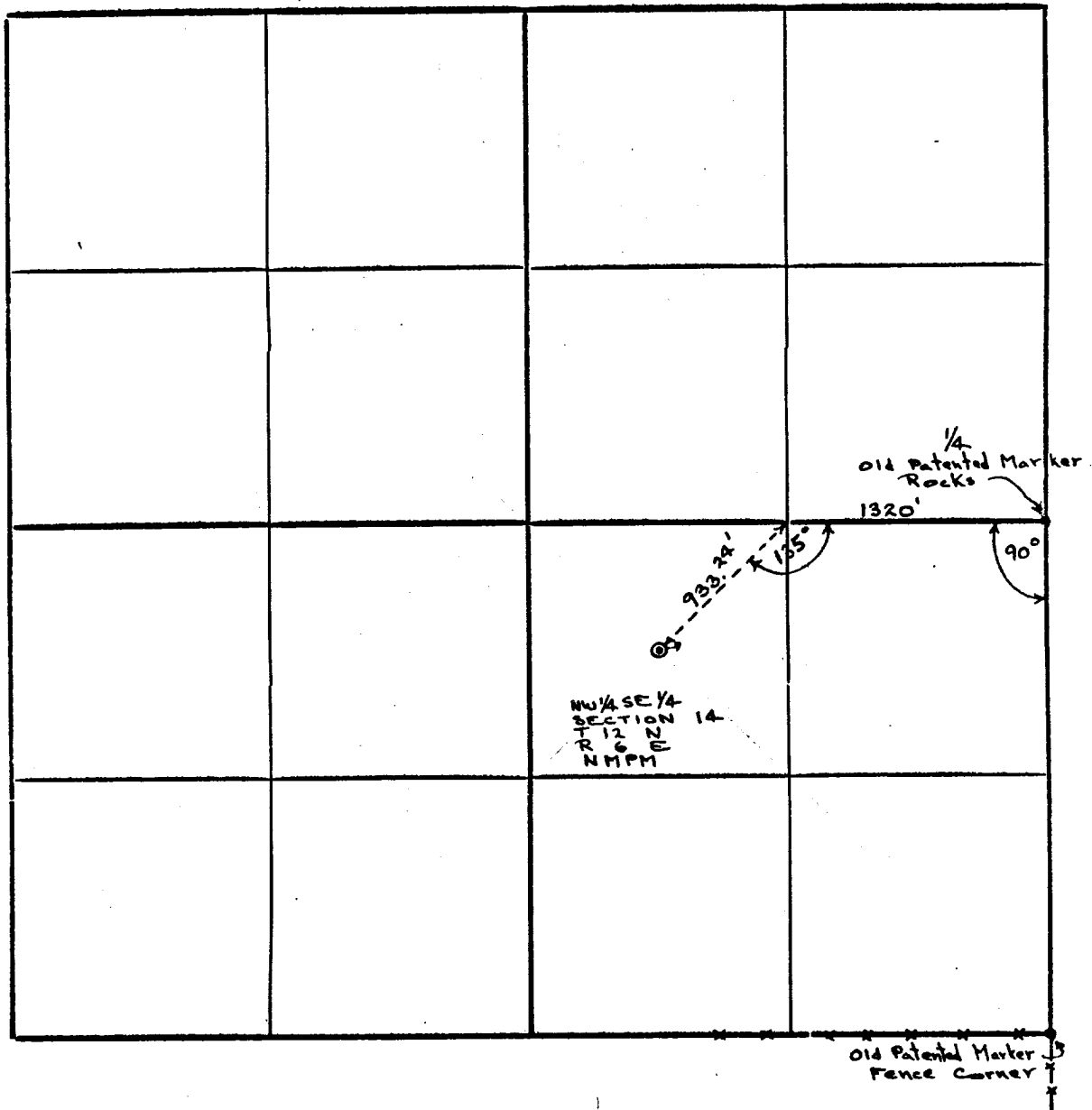


Section 14 Township 12 N Range 6 E County SANDOVAL
NEW MEXICO
~~NORA E. SUMMERS, BONDED ABSTRACTOR, SANTA FE, NEW MEXICO~~



Surveyed on August 13, 1951

This is to certify that I am a registered professional engineer and land surveyor, that the above plat was prepared from field notes of an actual survey made under my direction, and that the plat is true and correct to the best of my knowledge and belief.

Date August 15, 1951

Elwood C. Metz
Elwood C. Metz