

UNITED STATES
DEPARTMENT OF THE INTERIOR
GEOLOGICAL SURVEY

APPLICATION FOR PERMIT TO DRILL, DEEPEN, OR PLUG BACK

1A. TYPE OF WORK

DRILL ☒DEEPEN ☐PLUG BACK ☐

B. TYPE OF WELL

OIL
WELL ☐GAS
WELL ☐

OTHER Core Test for

SINGLE
ZONE ☐MULTIPLE
ZONE ☐

2. NAME OF OPERATOR

Geol. Data.

Tenneco Oil Company

3. ADDRESS OF OPERATOR

P. O. Box 1714, Durango, Colorado 81301

4. LOCATION OF WELL (Report location clearly and in accordance with any State requirements.)*

At surface

1650 FNL, 1650 FWL Unit F

At proposed prod. zone

14. DISTANCE IN MILES AND DIRECTION FROM NEAREST TOWN OR POST OFFICE*

Cuba, New Mexico, 20 miles SW

15. DISTANCE FROM PROPOSED*

LOCATION TO NEAREST
PROPERTY OR LEASE LINE, FT.
(Also to nearest drlg. unit line, if any)

16. NO. OF ACRES IN LEASE

17. NO. OF ACRES ASSIGNED
TO THIS WELL

None

18. DISTANCE FROM PROPOSED LOCATION*
TO NEAREST WELL, DRILLING, COMPLETED,
OR APPLIED FOR, ON THIS LEASE, FT.

19. PROPOSED DEPTH

1500'

20. ROTARY OR CABLE TOOLS

Rotary

21. ELEVATIONS (Show whether DF, RT, GR, etc.)

6410 Gr.

22. APPROX. DATE WORK WILL START*

May 18, 1967

23.

PROPOSED CASING AND CEMENTING PROGRAM

SIZE OF HOLE	SIZE OF CASING	WEIGHT PER FOOT	SETTING DEPTH	QUANTITY OF CEMENT
11"	8-5/8"		30'	10 SX.

Well will be drilled to approximately 1500', to top of Mancos Shale. After coring program is completed, wells will be plugged or cased and completed as warranted by information. It is requested that no information (including locations) be released for a period of one year or at an earlier date if specified by Tenneco.

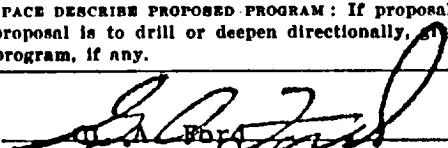
CONFIDENTIAL

THIS WELL IS BEING DRILLED AS A STRATIGRAPHIC TEST-HOLE FOR GEOLOGICAL INFORMATION ONLY AND UNDER NO CIRCUMSTANCES WILL IT BE PRODUCED.

IN ABOVE SPACE DESCRIBE PROPOSED PROGRAM: If proposal is to deepen or plug back, give pertinent data on present productive zone and proposed new productive zone. If proposal is to drill or deepen directionally, give pertinent data on subsurface locations and measured and true vertical depths. Give blowout preventer program, if any.

24.

SIGNED



TITLE

Senior Production Clerk

DATE

May 10, 1967

(This space for Federal or State office use)

PERMIT NO.

APPROVAL DATE

APPROVED BY

TITLE

DATE

CONDITIONS OF APPROVAL, IF ANY:

5 USGS

1 File

*See Instructions On Reverse Side

RECEIVED

MAY 11 1967

U. S. GEOLOGICAL SURVEY
FARMINGTON, N. M.

RECEIVED

MAY 12 1967

OIL CON. COM.

DIST. 3

16501-New

5-17-3

6410

NEW MEXICO OIL CONSERVATION COMMISSION
WELL LOCATION AND ACERAGE DEDICATION PLAT

All distances must be from the outer boundaries of the Section

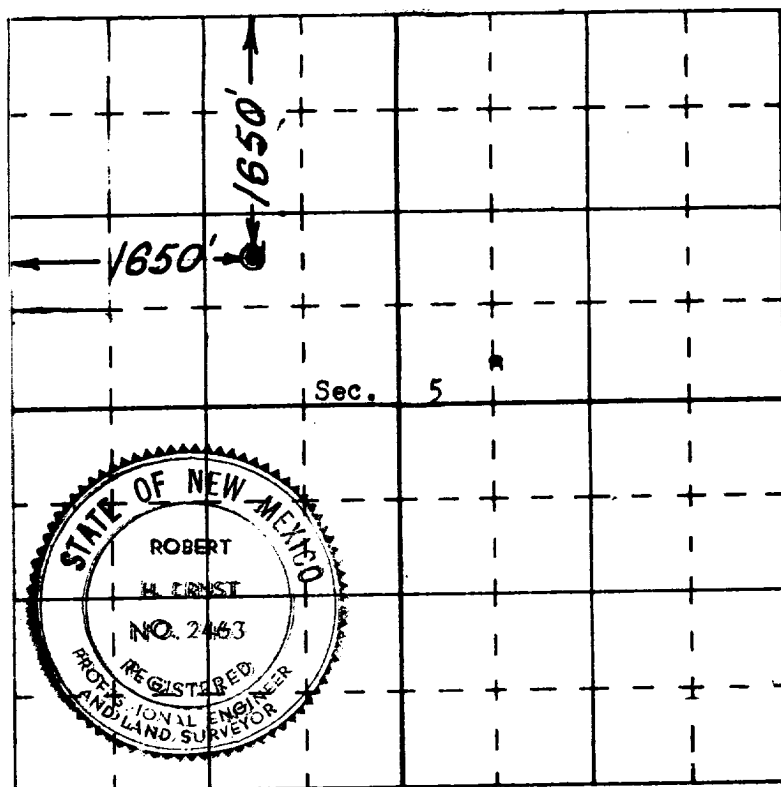
Operator TENNECO OIL COMPANY			Lease TORREON CORE HOLE		Well No. 2
Unit Letter 7	Section 5	Township 17 North	Range 3 West	County Sandoval	
Actual Footage Location of Well: 1650 feet from the North line and 1650 feet from the West line					
Ground Level Elev. 6410' ungraded		Producing Formation Wildcat		Dedicated Acreage: Acres	

1. Outline the acreage dedicated to the subject well by colored pencil or hatchure marks on the plat below.
2. If more than one lease is dedicated to the well, outline each and identify the ownership thereof (both as to working interest and royalty).
3. If more than one lease of different ownership is dedicated to the well, have the interests of all owners been consolidated by communitization, unitization, force-pooling, etc?

() Yes () No If answer is "yes," type of consolidation

If answer is "no," list the owners and tract descriptions which have actually consolidated. (Use reverse side of this form if necessary.)

No allowable will be assigned to the well until all interests have been consolidated (by communitization, unitization, forced-pooling, or otherwise) or until a non standard unit, eliminating such interests, has been approved by the Commission.



CERTIFICATION

I hereby certify that the information contained herein is true and complete to the best of my knowledge and belief.

G. A. Ford

Name **G. A. Ford**
Position **Senior Production Clerk**
May 10, 1967
Company **Tenneco Oil Company**
Date

I hereby certify that the well location shown on this plat was plotted from field notes of actual surveys made by me or under my supervision, and that the same is true and correct to the best of my knowledge and belief.

3 May 1967

Date Surveyed
Robert H. Ernst
Registered Professional Engineer
and/or Land Surveyor

Robert H. Ernst
N. Mex. PE & LS 2463

Certificate No.

Ernst Engineering Co.
Durango, Colorado