

UNITED STATES
DEPARTMENT OF THE INTERIOR
GEOLOGICAL SURVEY

30-043-20099

APPLICATION FOR PERMIT TO DRILL, DEEPEN, OR PLUG BACK

1a. TYPE OF WORK

DRILL ☒DEEPEN ☐PLUG BACK ☐

b. TYPE OF WELL

OIL
WELL ☒GAS
WELL ☐

OTHER

SINGLE
ZONE ☒MULTIPLE
ZONE ☐

2. NAME OF OPERATOR

Tesoro Petroleum Corporation

1776 LINCOLN ST. Denver Center Bldg
Denver, Colorado 80203

4. LOCATION OF WELL (Report location clearly and in accordance with any State requirements.)*

At surface

1980 'FWL, 660' FWL Sec. 11 T-18N, R-3-W

At proposed prod. zone

Same

14. DISTANCE IN MILES AND DIRECTION FROM NEAREST TOWN OR POST OFFICE*

8 miles E.N.E. Torreon, New Mexico

15. DISTANCE FROM PROPOSED*

LOCATION TO NEAREST
PROPERTY OR LEASE LINE, FT.
(Also to nearest drlg. unit line, if any) 660'

16. NO. OF ACRES IN LEASE

40±

17. NO. OF ACRES ASSIGNED
TO THIS WELL

40

NS

18. DISTANCE FROM PROPOSED LOCATION*
TO NEAREST WELL, DRILLING, COMPLETED,
OR APPLIED FOR, ON THIS LEASE, FT.

None

19. PROPOSED DEPTH

5200'

20. ROTARY OR CABLE TOOLS

Rotary

21. ELEVATIONS (Show whether DF, RT, GR, etc.)

6685 Gr.

22. APPROX. DATE WORK WILL START*

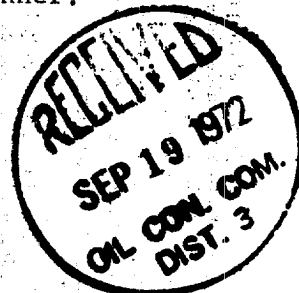
October 1, 1972

23.

PROPOSED CASING AND CEMENTING PROGRAM

SIZE OF HOLE	SIZE OF CASING	WEIGHT PER FOOT	SETTING DEPTH	QUANTITY OF CEMENT
13 3/4	9 5/8"	36.0	250'	250 sx Class "A"
7 7/8	5 1/2"	15.5	5200'	300 sx Class "A"

We propose to drill the surface hole to a minimum of 250' and set 9 5/8" surface casing. We will then drill a 7 7/8" hole to 5200 ± to evaluate the Gallup, Dakota and Entrada zones. If the well proves to be commercially productive we will run and cement 5 1/2" casing to total depth and complete the well in an approved manner.



IN ABOVE SPACE DESCRIBE PROPOSED PROGRAM: If proposal is to deepen or plug back, give data on present productive zone and proposed new productive zone. If proposal is to drill or deepen directionally, give pertinent data on subsurface locations and measured and true vertical depths. Give blowout preventer program, if any.

24.

SIGNED

TITLE

Operations Manager

DATE

9/13/72

(This space for Federal or State office use)

PERMIT NO.

APPROVAL DATE

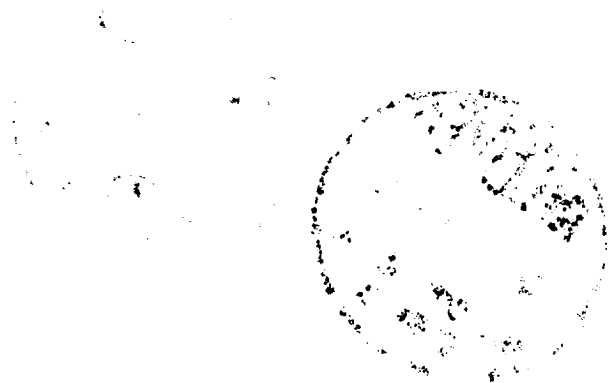
APPROVED BY

TITLE

DATE

CONDITIONS OF APPROVAL, IF ANY:

*See Instructions On Reverse Side



**NEW MEXICO OIL CONSERVATION COMMISSION
WELL LOCATION AND ACERAGE DEDICATION PLAT**

All distances must be from the outer boundaries of the Section

Operator TESORO PETROLEUM CORP.		Lease FEDERAL - San Luis		Well No. 1
Unit Letter E	Section 11	Township 18 North	Range 3 West	County Sandoval
Actual Footage Location of Well 1980 feet from the North line and 660 feet from the West line				
Ground Level Elev. 6685' ungraded		Producing Formation DK Estrada	Per WC	Dedicated Acreage 40 ^{ACS} Acres

1. Outline the acreage dedicated to the subject well by colored pencil or machine marks on the plat below.
 2. If more than one lease is dedicated to the well, outline each and identify the ownership thereof (both as to working interest and royalty).
 3. If more than one lease of different ownership is dedicated to the well, have the interests of all owners been consolidated by communitization, unitization, force-pooling, etc?
- Yes ☐ No ☐ If answer is "yes," type of consolidation: _____

If answer is "no," list the owners and tract descriptions which have actually consolidated: (Use reverse side of this form if necessary) _____

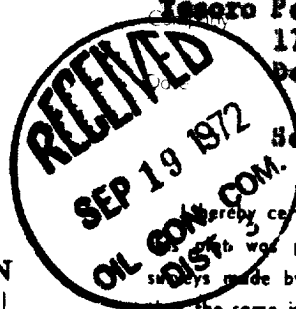
No allowable will be assigned to the well until all interests have been consolidated (by communitization, unitization, forced-pooling, or otherwise) or until a non standard unit, eliminating such interests, has been approved by the Commission.

CERTIFICATION

I hereby certify that the information contained herein is true and complete to the best of my knowledge and belief.

J. Harvey Ashford Jr.
Name **J. Harvey Ashford Jr.**
Position **Operations Manager**

Tesoro Petroleum Corporation
1776 Lincoln St
Denver, Colorado 80203



September 13, 1972

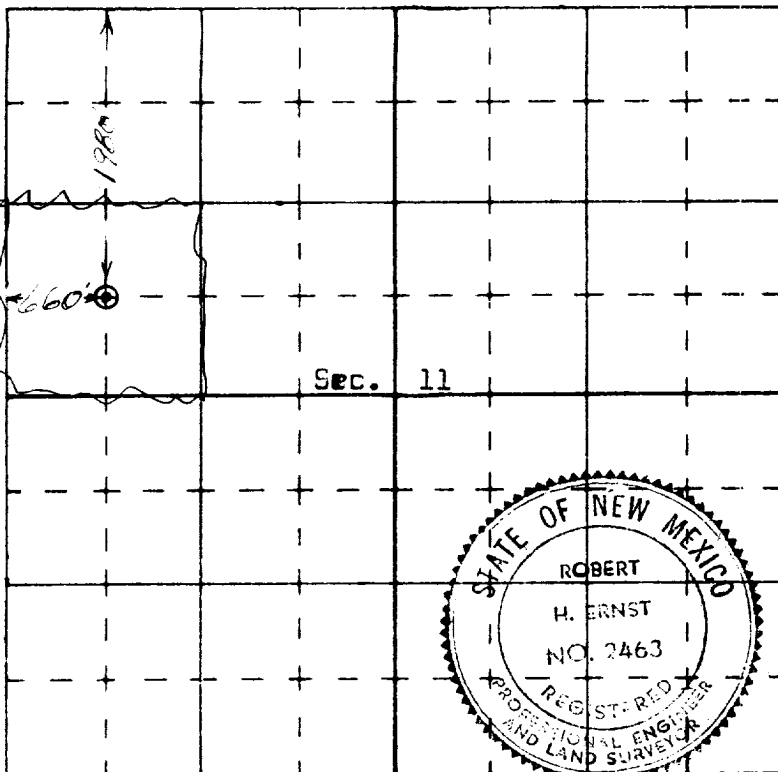
I hereby certify that the well location shown on this plat was plotted from field notes of actual surveys made by me or under my supervision, and that the same is true and correct to the best of my knowledge and belief.

9 September 1972
Date Surveyed

Robert H. Ernst
Registered Professional Engineer
and/or Land Surveyor

Robert H. Ernst
N. Mex. PE & LS 2483

Certificate No. _____



ERNST ENGINEERING CO.
Durango, Colorado

