

UNITED STATES
DEPARTMENT OF THE INTERIOR
GEOLOGICAL SURVEY30-043-20124
5. LEASE DESIGNATION AND SERIAL NO.

14-20-0603-1678

6. IF INDIAN, ALLOTTEE OR TRIBE NAME

4C-25 Navajo

7. UNIT AGREEMENT NAME

8. FARM OR LEASE NAME

Toledo

9. WELL NO.

1

10. FIELD AND POOL, OR WILDCAT

Wildcat

11. SEC., T., R., M., OR BLK.
AND SURVEY OR AREA

Sec 18-T18N-R4W

12. COUNTY OR PARISH 13. STATE

Sandoval

New Mexico

APPLICATION FOR PERMIT TO DRILL, DEEPEN, OR PLUG BACK

1a. TYPE OF WORK

DRILL ☒DEEPEN ☐PLUG BACK ☐

b. TYPE OF WELL

OIL
WELL ☐GAS
WELL ☒

OTHER

SINGLE
ZONE ☐MULTIPLE
ZONE ☐

2. NAME OF OPERATOR

JESCO, INC.

3. ADDRESS OF OPERATOR

Petroleum Plaza Farmington, New Mexico 87401

4. LOCATION OF WELL (Report location clearly and in accordance with any State requirements.)*

At surface

1980'E & 790'S Sec 18, T18N - R4W

At proposed prod. zone

1060
Same

14. DISTANCE IN MILES AND DIRECTION FROM NEAREST TOWN OR POST OFFICE*

1½ miles west of Torreon Trading Post

15. DISTANCE FROM PROPOSED*

LOCATION TO NEAREST

PROPERTY OR LEASE LINE, FT.

(Also to nearest drlg. unit line, if any)

790'

16. NO. OF ACRES IN LEASE

160

17. NO. OF ACRES ASSIGNED

TO THIS WELL

160

18. DISTANCE FROM PROPOSED LOCATION*

TO NEAREST WELL, DRILLING, COMPLETED,
OR APPLIED FOR, ON THIS LEASE, FT.

None

19. PROPOSED DEPTH

1600'

20. ROTARY OR CABLE TOOLS

Rotary

21. ELEVATIONS (Show whether DF, RT, GR, etc.)

6500' ground

22. APPROX. DATE WORK WILL START*

6/20/73

23.

PROPOSED CASING AND CEMENTING PROGRAM

SIZE OF HOLE	SIZE OF CASING	WEIGHT PER FOOT	SETTING DEPTH	QUANTITY OF CEMENT
12¼"	8 5/8"	28.00#	60'	45 sks
7 7/8"	4½"	9.55#	1600'	150 sks

See Attachment

It is intended to drill this well to a depth of 1600' to test the Point Lookout Lithic Unit of the Mesa Verde formation, and complete behind 4½" casing.

RECEIVED
JUN 1 1973
U. S. GEOLOGICAL SURVEY
DURANGO, COLO.

IN ABOVE SPACE DESCRIBE PROPOSED PROGRAM: If proposal is to deepen or plug back, give data on present productive zone and proposed new productive zone. If proposal is to drill or deepen directionally, give pertinent data on subsurface locations and measured and true vertical depths. Give blowout preventer program, if any.

24.

SIGNED

TITLE

Geologist

DATE

4/30/73

(This space for Federal or State office use)

PERMIT NO.

APPROVAL DATE

APPROVED BY

GA

TITLE

DATE

CONDITIONS OF APPROVAL, IF ANY:

St.

*See Instructions On Reverse Side

**NEW MEXICO OIL CONSERVATION COMMISSION
WELL LOCATION AND ACREAGE DEDICATION PLAT**

Form C-102
Supersedes C-128
Effective 1-1-65

All distances must be from the outer boundaries of the Section.

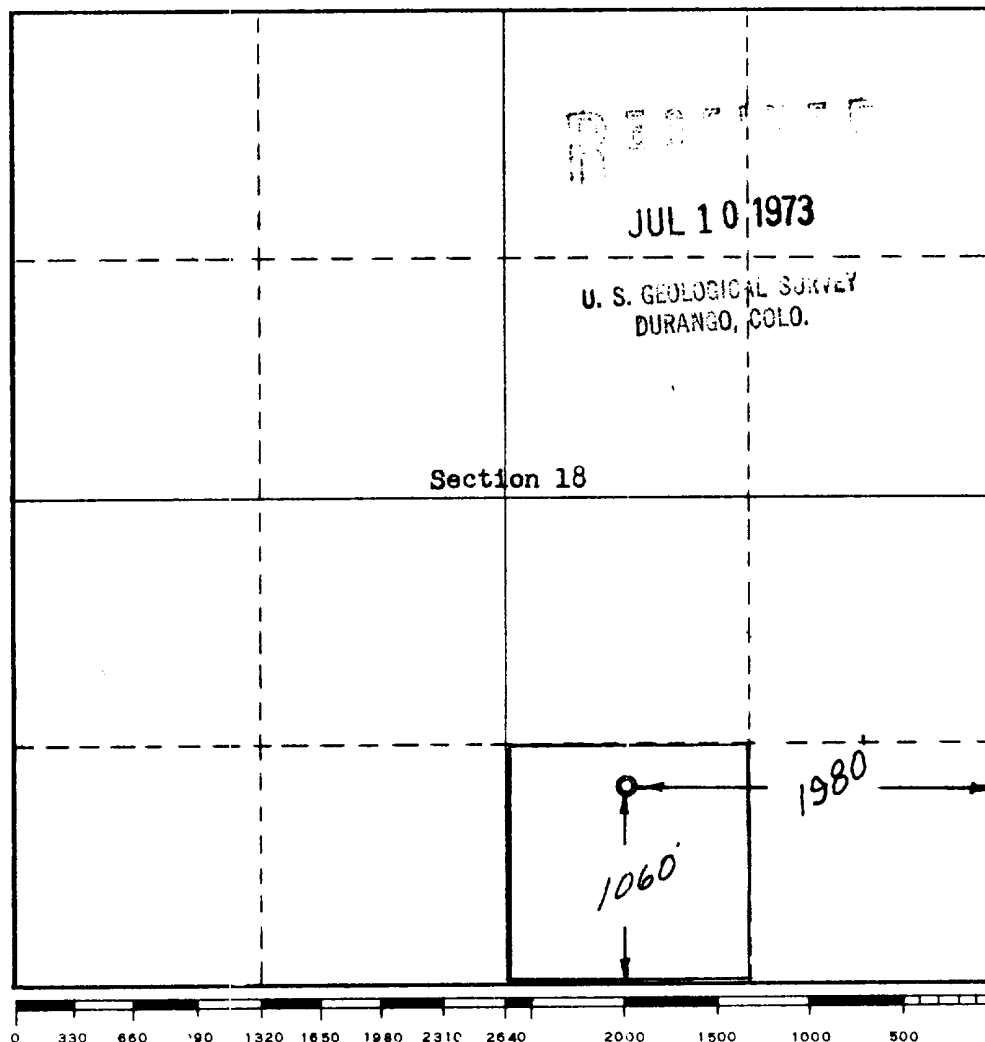
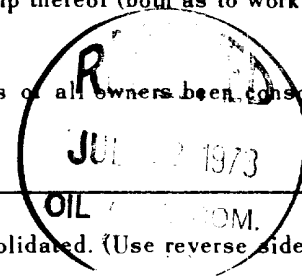
Operator Jesco, Inc.		Lease Toledo		Well No. 1
Unit Letter 0	Section 18	Township 18 North	Range 4 West	County Sandoval
Actual Footage Location of Well: 1060 feet from the South line and 1980 feet from the East line				
Ground Level Elev. 6496	Producing Formation Menofee	Pool Wildcat	Dedicated Acreage: 40 Acres	

1. Outline the acreage dedicated to the subject well by colored pencil or hatchure marks on the plat below.
2. If more than one lease is dedicated to the well, outline each and identify the ownership thereof (both as to working interest and royalty).
3. If more than one lease of different ownership is dedicated to the well, have the interests of all owners been consolidated by communitization, unitization, force-pooling, etc?

☐ Yes ☐ No If answer is "yes," type of consolidation _____

If answer is "no," list the owners and tract descriptions which have actually been consolidated. (Use reverse side of this form if necessary.) _____

No allowable will be assigned to the well until all interests have been consolidated (by communitization, unitization, forced-pooling, or otherwise) or until a non-standard unit, eliminating such interests, has been approved by the Commission.



CERTIFICATION

I hereby certify that the information contained herein is true and complete to the best of my knowledge and belief.

Name **W. D. Stricklin**
Position **Exploration Manager**
Company **JESCO, INC.**
Date **July 6, 1973**

I hereby certify that the well location shown on this plat was plotted from field notes of actual surveys made by me or under my supervision, and that the same is true and correct to the best of my knowledge and belief.

Date Surveyed **July 2, 1973**
Registered Professional Engineer and Land Surveyor

Certificate No. **3081**

JESCO, INC.

THE ENERGY SERVICE COMPANY

P.O. Box 2158
Farmington, N.M. 87401

Phone:
505-325-8626

May 31, 1973

Mr. Jerry Long
U.S.G.S.
Durango, Colorado 81301

Re: Development plan for surface use.
JESCO, INC. #1 Toledo.

Dear Mr. Long:

The following is a development plan for surface use for the JESCO, INC. #1 Toledo, located 1980'/E and 790'/S in Section 18, Township 18 North, Range 4 West, Sandoval County, New Mexico.

Numbers 1 thru 4 of the guideline information sheet are all found on the attached Tinian, New Mexico topo quad. The exit from Highway 44 is at Cuba, New Mexico.

Information which deals with Nos. 5, 7, 8, and 10 will be found on the attached drawing.

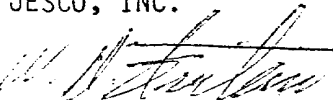
Water for drilling operations will be trucked from the Johnston Trading Post.

We will build no airstrips.

The surface will be cleaned of any and all debris, the mud pits filled and leveled and a dry hole marker erected in the event of a dry hole. In the event of a producer, the surface will be cleaned and leveled, signs depicting well name, etc. will be placed. The completed well location will conform to standard oil field and government requirements.

Sincerely,

JESCO, INC.



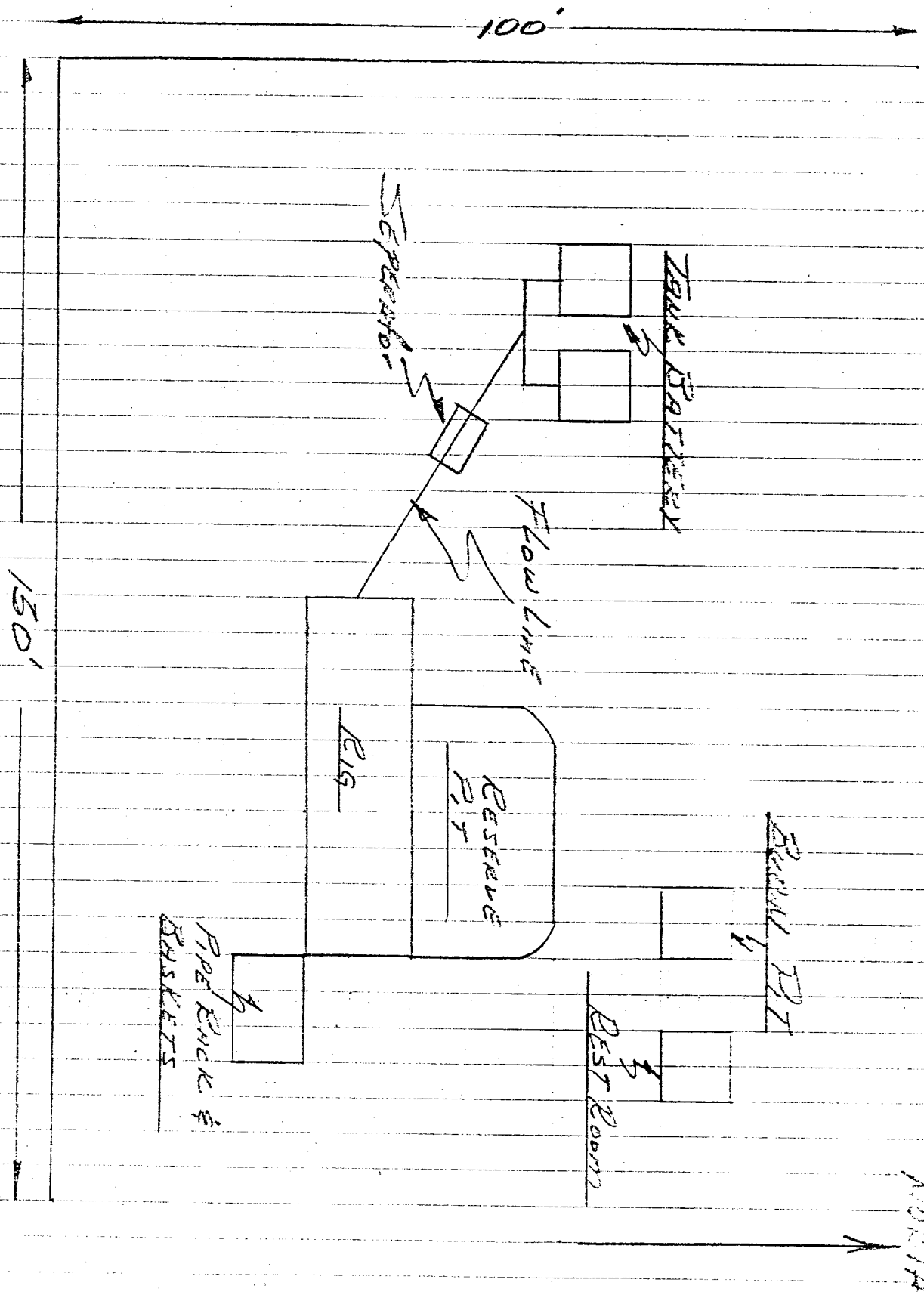
W. D. STRICKLIN
Exploration Manager

WDS/su
Enclosure

RECEIVED

JUN 1 1973

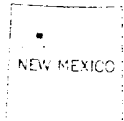
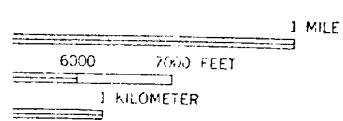
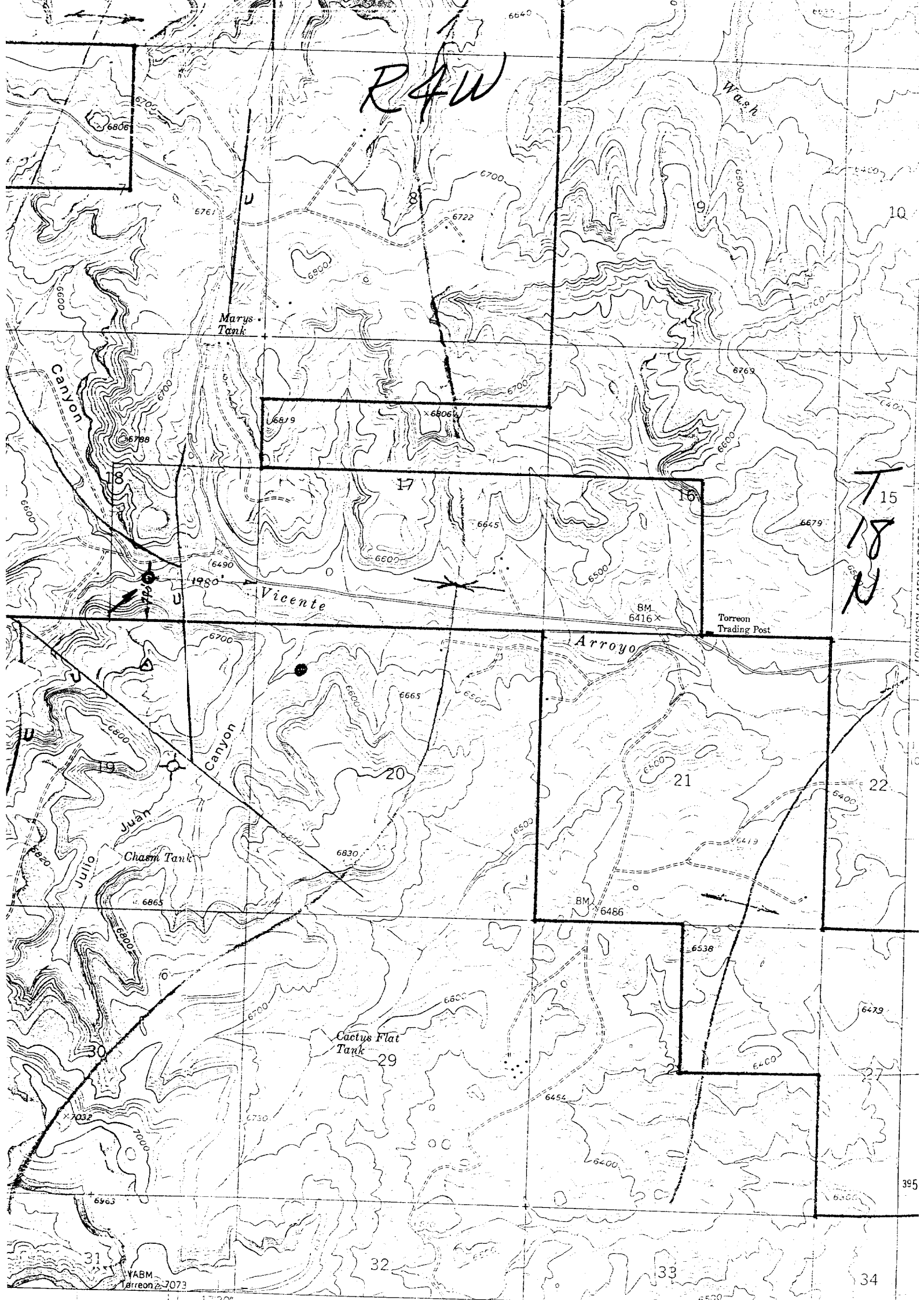
U. S. GEOLOGICAL SURVEY
DURANGO, COLO.



RECEIVED

JUN 1 1973

U. S. GEOLOGICAL SURVEY
BIRMINGHAM, ALA.



295000m. E. 35° 107°15'

INTERIOR-GEOLOGICAL SURVEY, WASHINGTON, D.C. - 1963
MR 7570 200 000 FEET (CENTRAL)

ROAD CLASSIFICATION
Light-duty ————— Unimproved dirt —————