

UNITED STATES  
DEPARTMENT OF THE INTERIOR  
GEOLOGICAL SURVEY

30-043-20126

APPLICATION FOR PERMIT TO DRILL, DEEPEN, OR PLUG BACK

5. LEASE DESIGNATION AND SERIAL NO.  
~~1-23-0001-12095~~

6. IF INDIAN, ALLOTTEE OR TRIBE NAME

7. UNIT AGREEMENT NAME  
LANS MIPAS GAS STORAGE

8. FARM OR LEASE NAME  
SAN YSIDRO

9. WELL NO.  
5

10. FIELD AND POOL, OR WILDCAT  
WILDCAT

11. SEC., T., R., M., OR BLK. AND SURVEY OR AREA  
Sec. 20, T-15N, R-1E  
T15N, R1E

12. COUNTY OR PARISH  
SANDOVAL

13. STATE  
NEW MEXICO

1a. TYPE OF WORK  
DRILL  DEEPEN  PLUG BACK

b. TYPE OF WELL  
OIL WELL  GAS WELL  OTHER WILDCAT

2. NAME OF OPERATOR  
SOUTHERN UNION GAS COMPANY

3. ADDRESS OF OPERATOR  
P. O. Box 308, FARMINGTON, NEW MEXICO

4. LOCATION OF WELL (Report location clearly and in accordance with any State requirements.)  
At surface  
369 FT. FROM THE SOUTH LINE & 1886 FT. FROM THE WEST LINE.  
At proposed prod. zone SAME AS ABOVE.

14. DISTANCE IN MILES AND DIRECTION FROM NEAREST TOWN OR POST OFFICE\*  
5 MILES WEST OF SAN YSIDRO, NEW MEXICO

15. DISTANCE FROM PROPOSED\* LOCATION TO NEAREST PROPERTY OR LEASE LINE, FT. (Also to nearest drlg. unit line, if any)  
369 FT.

16. NO. OF ACRES IN LEASE  
2560

17. NO. OF ACRES ASSIGNED TO THIS WELL  
60 ACRES

18. DISTANCE FROM PROPOSED LOCATION\* TO NEAREST WELL, DRILLING, COMPLETED, OR APPLIED FOR, ON THIS LEASE, FT.  
1090 FT.

19. PROPOSED DEPTH  
2415 FT.

20. ROTARY OR CABLE TOOLS  
ROTARY

21. ELEVATIONS (Show whether DF, RT, GR, etc.)  
3517 FT. UNGRADED GROUND LEVEL.

22. APPROX. DATE WORK WILL START\*  
JULY 20, 1973

23. PROPOSED CASING AND CEMENTING PROGRAM

SIZE OF HOLE	SIZE OF CASING	WEIGHT PER FOOT	SETTING DEPTH	QUANTITY OF CEMENT
12-1/4"	8-5/8"	24.0#	400 FT.	300 BAGS
7-7/8"	5-1/2"	15.50#	2415 FT.	900 CU. FT.

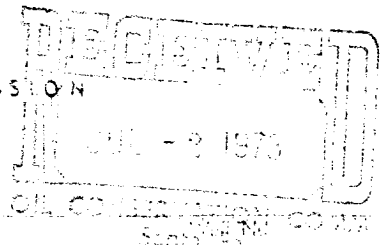
1. WE PROPOSE TO DRILL A 7-7/8" HOLE TO TOTAL DEPTH OF APPROX. 2415 FT.
2. IT IS OUR INTENTION TO CORE THE AQUA ZARCO FORMATION AND THE POLEO FORMATION.
3. RUN 5-1/2", 15.50#, K-55 CASING TO TOTAL DEPTH OF 2415 FT. R.I.C.D. 1ST STAGE CEMENTED W/APPROX. 300 CU. FT. OF CEMENT. STAGE COLLAR WILL BE SET AT APPROX. 1100 FT. AND CEMENTED W/400 CU. FT. OF CEMENT.
4. THE AQUA ZARCO FORMATION WILL BE PERFORATED AND EVALUATED FOR POSSIBLE GAS STORAGE.
5. 2" E.U.E., 4.70#, J-55 TUBING WILL BE RUN AND SET AT APPROX. 2350 FT. R.I.C.D.

IN ABOVE SPACE DESCRIBE PROPOSED PROGRAM: If proposal is to deepen or plug back, give data on present productive zone and proposed new productive zone. If proposal is to drill or deepen directionally, give pertinent data on subsurface locations and measured and true vertical depths. Give blowout preventer program, if any.

24. Original signed by  
GILBERT D. NOLAND, JR.  
SIGNED GILBERT D. NOLAND, JR. TITLE DRILLING SUPERINTENDENT DATE JUNE 26, 1973  
(This space for Federal or State office use)

PERMIT NO. \_\_\_\_\_ APPROVAL DATE \_\_\_\_\_  
APPROVED BY [Signature] TITLE \_\_\_\_\_ DATE \_\_\_\_\_  
CONDITIONS OF APPROVAL, IF ANY:

NEW MEXICO OIL CONSERVATION COMMISSION  
WELL LOCATION AND ACERAGE DEDICATION PLAT



All distances must be from the outer boundaries of the Section

Operator: SOUTHERN UNION PRODUCTION CO. Lease: SAN YSIDRO

County: SANDOVAL Section: 20 Township: 15 NORTH Range: E Block: 1 WEST

Acres: 369 feet from the SOUTH line of 1836 feet from the WEST line

Ground Level Elev: 5827.0 Producing Formation: WILDCAT Pool: NONE Dedicated Acreage: SE/4, SW/4 40 Acres

1. Outline the acreage dedicated to the subject well by colored pencil or hatchure marks on the plat below.
2. If more than one lease is dedicated to the well, outline each and identify the ownership thereof (both as to working interest and royalty).
3. If more than one lease of different ownership is dedicated to the well, have the interests of all owners been consolidated by communization, unitization, force-pooling, etc?  
 Yes  No If answer is "yes," type of consolidation: \_\_\_\_\_  
 If answer is "no," list the owners and tract descriptions which have actually consolidated. (Use reverse side of this form if necessary.) \_\_\_\_\_  
 No allowable will be assigned to the well until all interests have been consolidated (by communization, unitization, forced-pooling, or otherwise) or until a non standard unit, eliminating such interests, has been approved by the Commission.

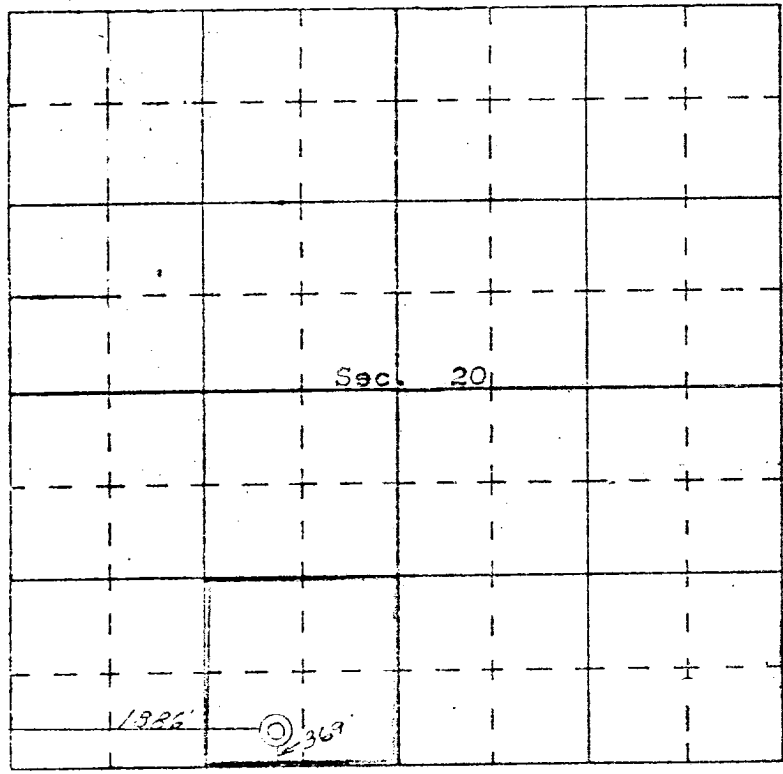
CERTIFICATION

I hereby certify that the information contained herein is true and complete to the best of my knowledge and belief.

Original signed by  
GILBERT D. NOLAND, JR.  
 Name  
GILBERT D. NOLAND, JR.  
 Position  
DRILLING SUPERINTENDENT  
 Company  
SOUTHERN UNION PRODUCTION  
 Date  
JUNE 26, 1973

I hereby certify that the well location shown on this plat was plotted from field notes of actual surveys made by me or under my supervision, and that the same is true and correct to the best of my knowledge and belief.

Date: 25 June, 1973  
 Registered Professional Engineer  
 and Land Surveyor  
JAMES P. LEESE  
 Certificate No. 2483



SCALE—4 INCHES EQUALS 1 MILE