

DEVELOPMENT PLAN FOR

SURFACE USE

This development plan is attached to Application to Drill a Menefee test located 695 feet from the North line and 500 feet from the West line of Section 20, T18N, R4W, Sandoval County, New Mexico. The test is to be designated as Bennett-Federal #1 on Federal lease number NM 19398.

This test is to be drilled with a small rotary rig to a depth of approximately 450 feet.

1. Existing Roads and Exit

Attached to this statement is a copy of USGS topographic map designated as Map #1. The locatable reference point is Torreon Trading Post, New Mexico in Section 16, T18N, R4W. The main access road is a paved road from San Luis, New Mexico passing through Torreon. The exit from this road is approximately 1/8 mile west of Torreon Trading Post South on an existing road and then West one mile to the location. These roads are shown on Map #1.

2. Planned Access Roads

No new roads are planned for this location. Access can be made from existing roads.

3. Location of Existing Wells

Map #1 shows location of wells drilled within a two-mile radius of the proposed location.

4. Lateral Roads to Well Locations

See Map #1.

5. Location of Tank Batteries and Flow Lines

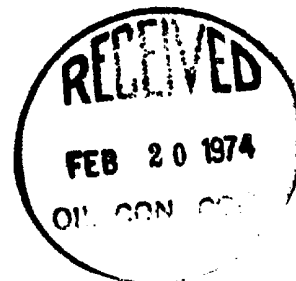
The tank battery will be located approximately 200 feet east of the location and the flow line will be direct from the well to the battery. This location is marked on Map #1 with a red "T".

6. Location and Type of Water

Fresh water will be hauled to drill this test.

7. Methods of Handling Waste Disposal

Upon completion of the test, all waste material will be placed in the pit, covered over and buried.



8. Location of Camps

No camps are anticipated. Crews will drive to and from work daily.

9. Location of Airstrips

No airstrip will be constructed.

10. Location of Layout

Map #2 shows the position of the rig, pits, racks and houses. The immediate area is flat and the pad will not need to be surfaced or compacted.

11. Restoration of the Surface

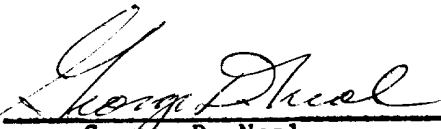
Upon completion of operations, the surface will be cleared of all waste, pits filled, and leveled.

12. Additional Information

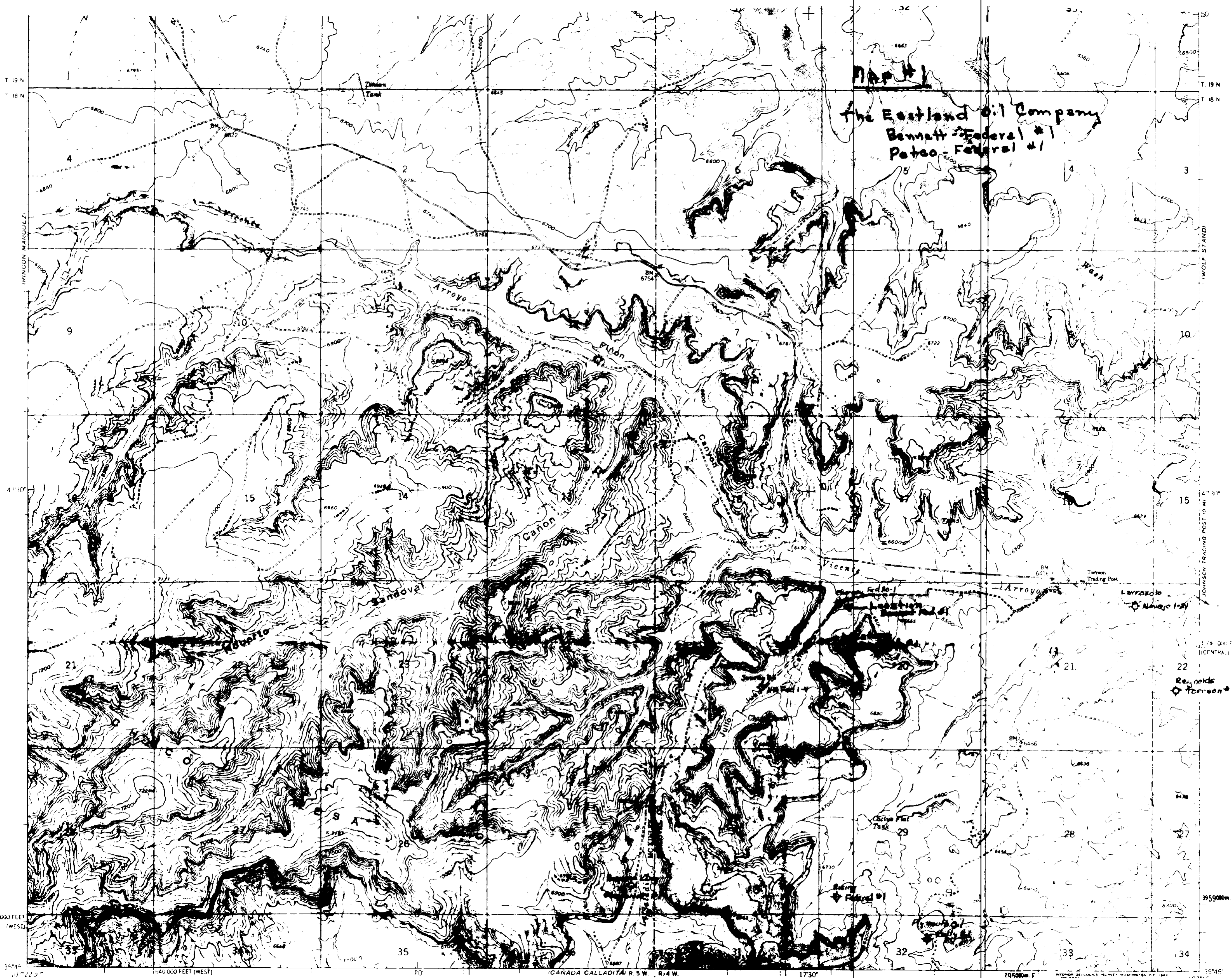
The immediate area will not require any cuts or fills. There is little vegetation.

THE EASTLAND OIL COMPANY

By

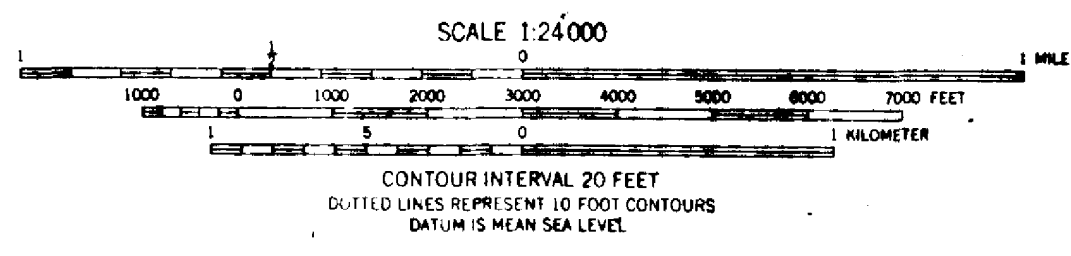
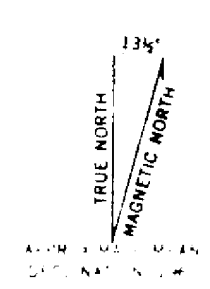

George D. Neal
Superintendent
2-15-74





Map #1
The Eastland Oil Company
Bennett Federal #1
Petee Federal #1

Maped, edited, and published by the Geological Survey
Control by USGS and USC&GS
Topography by photogrammetric methods from aerial
photographs taken 1958. Field checked 1961.
Projections: 1927 North American datum
10,000 foot grids based on New Mexico coordinate system,
west and central zones
1000 meter Universal Transverse Mercator grid ticks,
zone 13 shown in blue



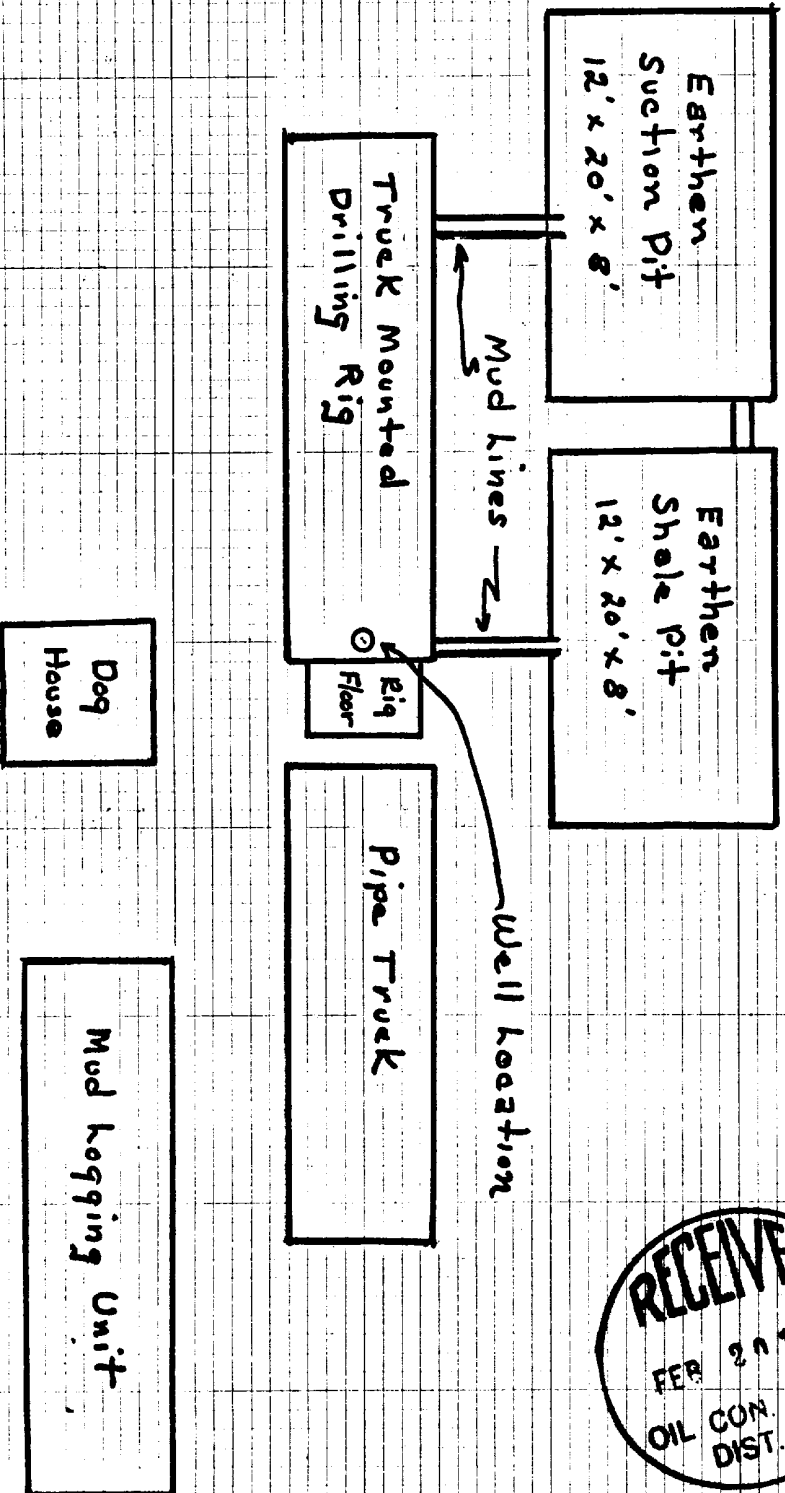
ROAD CLASSIFICATION
Light-duty Unimproved dirt

FOR SALE BY U.S. GEOLOGICAL SURVEY, DENVER 25, COLORADO OR WASHINGTON 25, D.C.
A FOLDER DESCRIBING TOPOGRAPHIC MAPS AND SYMBOLS IS AVAILABLE ON REQUEST

Development Plan For Surface Use The Eastland Oil Company Bennett-Federal #1

Map #2

Petro
Chorney 20 Fed #1



Scale: 1" = 10'