

UNITED STATES  
DEPARTMENT OF THE INTERIOR  
GEOLOGICAL SURVEY

APPLICATION FOR PERMIT TO DRILL, DEEPEN, OR PLUG BACK

1A. TYPE OF WORK

DRILL ☒

DEEPEN ☐

PLUG BACK ☐

B. TYPE OF WELL

OIL  
WELL ☐

GAS  
WELL ☒

OTHER

SINGLE  
ZONE ☐

MULTIPLE  
ZONE ☐

2. NAME OF OPERATOR

Chace Oil Company

3. ADDRESS OF OPERATOR

313 Washington, S.E., Albuquerque, N.M. 87108

4. LOCATION OF WELL (Report location clearly and in accordance with any State requirements.)

At surface 800' FSL, 800' FEL

At proposed prod. zone

Same

14. DISTANCE IN MILES AND DIRECTION FROM NEAREST TOWN OR POST OFFICE\*

15 miles Counselors, N.M. 87

15. DISTANCE FROM PROPOSED\*

LOCATION TO NEAREST  
PROPERTY OR LEASE LINE, FT.  
(Also to nearest drig. unit line, if any)

800'

16. NO. OF ACRES IN LEASE

1160

17. NO. OF ACRES ASSIGNED  
TO THIS WELL

160

18. DISTANCE FROM PROPOSED LOCATION\*

TO NEAREST WELL, DRILLING, COMPLETED,  
OR APPLIED FOR, ON THIS LEASE, FT.

None

19. PROPOSED DEPTH

4200' Pt. Lookout

20. ROTARY OR CABLE TOOLS

Rotary

21. ELEVATIONS (Show whether DF, RT, GR, etc.)

6990' GR.

22. APPROX. DATE WORK WILL START\*

July 30, 1974

23.

PROPOSED CASING AND CEMENTING PROGRAM

SIZE OF HOLE	SIZE OF CASING	WEIGHT PER FOOT	SETTING DEPTH	QUANTITY OF CEMENT
11 1/2"	8-5/8"	20	100'	100 SXS.
6 1/2"	2-7/8"	6.50	4200'	125 SXS

Set 8-5/8" surface casing at 100' and circulate cement.  
Drill to 4200', run logs, if production is indicated,  
set and cement 2-7/8" production casing with 125 sacks cement.  
Gun Perforate, fracture treat in a completion attempt. Plug  
and abandon in accordance with U.S.G.S. instructions if  
non-productive.

IN ABOVE SPACE DESCRIBE PROPOSED PROGRAM: If proposal is to deepen or plug back, give data on present productive zone and proposed new productive zone. If proposal is to drill or deepen directionally, give pertinent data on subsurface locations and measured and true vertical depths. Give blowout preventer program, if any.

24.

SIGNED

*Charles C. Bundy*

TITLE Drilling Supt.

DATE

7-1-74

(This space for Federal or State office use)

PERMIT NO.

APPROVAL DATE

APPROVED BY

*gm*

TITLE

DATE

CONDITIONS OF APPROVAL, IF ANY:

*st*

\*See Instructions On Reverse Side

**NEW MEXICO OIL CONSERVATION COMMISSION  
WELL LOCATION AND ACREAGE DEDICATION PLAT**

Form C-102  
Supersedes C-128  
Effective 1-1-65

All distances must be from the outer boundaries of the Section.

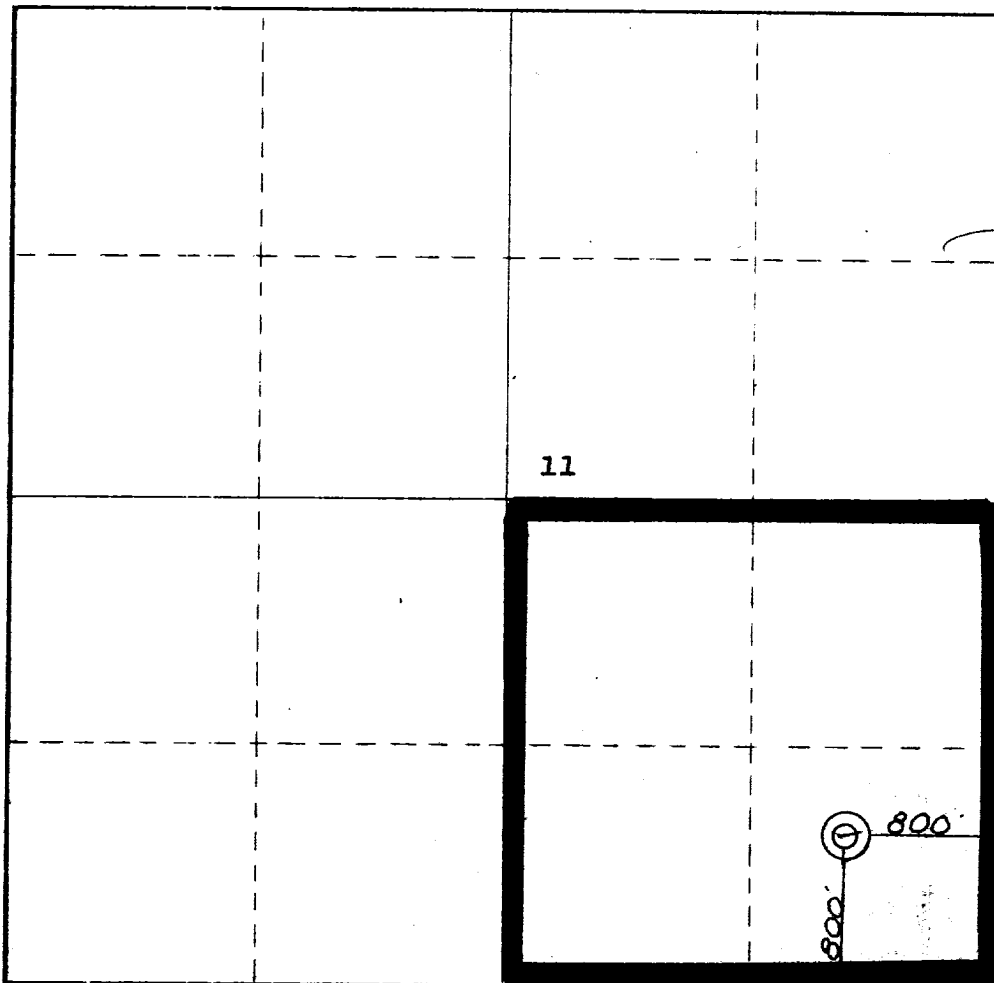
Operator <b>CHACE OIL COMPANY</b>			Lease <b>RUSTY FEDERAL</b>		Well No. <b>1</b>
Unit Letter <b>P</b>	Section <b>11</b>	Township <b>22 NORTH</b>	Range <b>7 WEST</b>	County <b>SANDOVAL</b>	
Actual Footage Location of Well:					
<b>800</b>		<b>SOUTH</b>		line and <b>800</b>	
feet from the				feet from the <b>EAST</b>	
Ground Level Elev. <b>6990</b>	Producing Formation <b>Mesaverde</b>		Pool <b>Wildcat</b>	Dedicated Acreage: <b>160</b> Acres	

1. Outline the acreage dedicated to the subject well by colored pencil or hachure marks on the plat below.
2. If more than one lease is dedicated to the well, outline each and identify the ownership thereof (both as to working interest and royalty).
3. If more than one lease of different ownership is dedicated to the well, have the interests of all owners been consolidated by communitization, unitization, force-pooling, etc?

☐ Yes    ☐ No    If answer is "yes," type of consolidation \_\_\_\_\_

If answer is "no," list the owners and tract descriptions which have actually been consolidated. (Use reverse side of this form if necessary.) \_\_\_\_\_

No allowable will be assigned to the well until all interests have been consolidated (by communitization, unitization, forced-pooling, or otherwise) or until a non-standard unit, eliminating such interests, has been approved by the Commission.



**CERTIFICATION**

I hereby certify that the information contained herein is true and complete to the best of my knowledge and belief.

*Claude C. Kennedy*  
Name

**Claude C. Kennedy**

Position  
**Drilling Supt.**

Company  
**Chace Oil Co.**

Date  
**7-1-74**

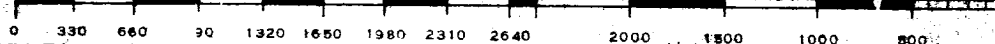
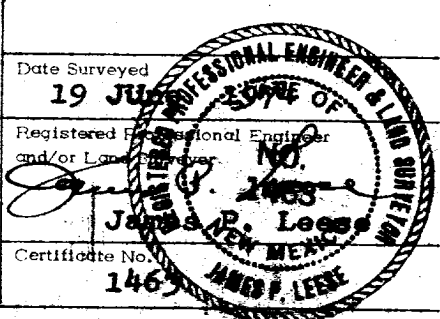
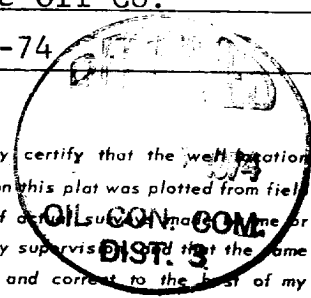
I hereby certify that the well location shown on this plat was plotted from field notes of actual survey made by me or under my supervision and that the same is true and correct to the best of my knowledge and belief.

Date Surveyed  
**19 JUL 1974**

Registered Professional Engineer and/or Land Surveyor

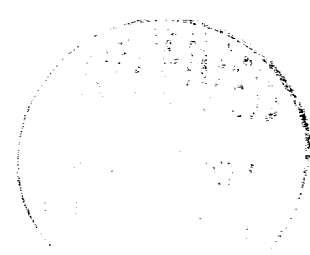
*James P. Leese*  
No. **2463**

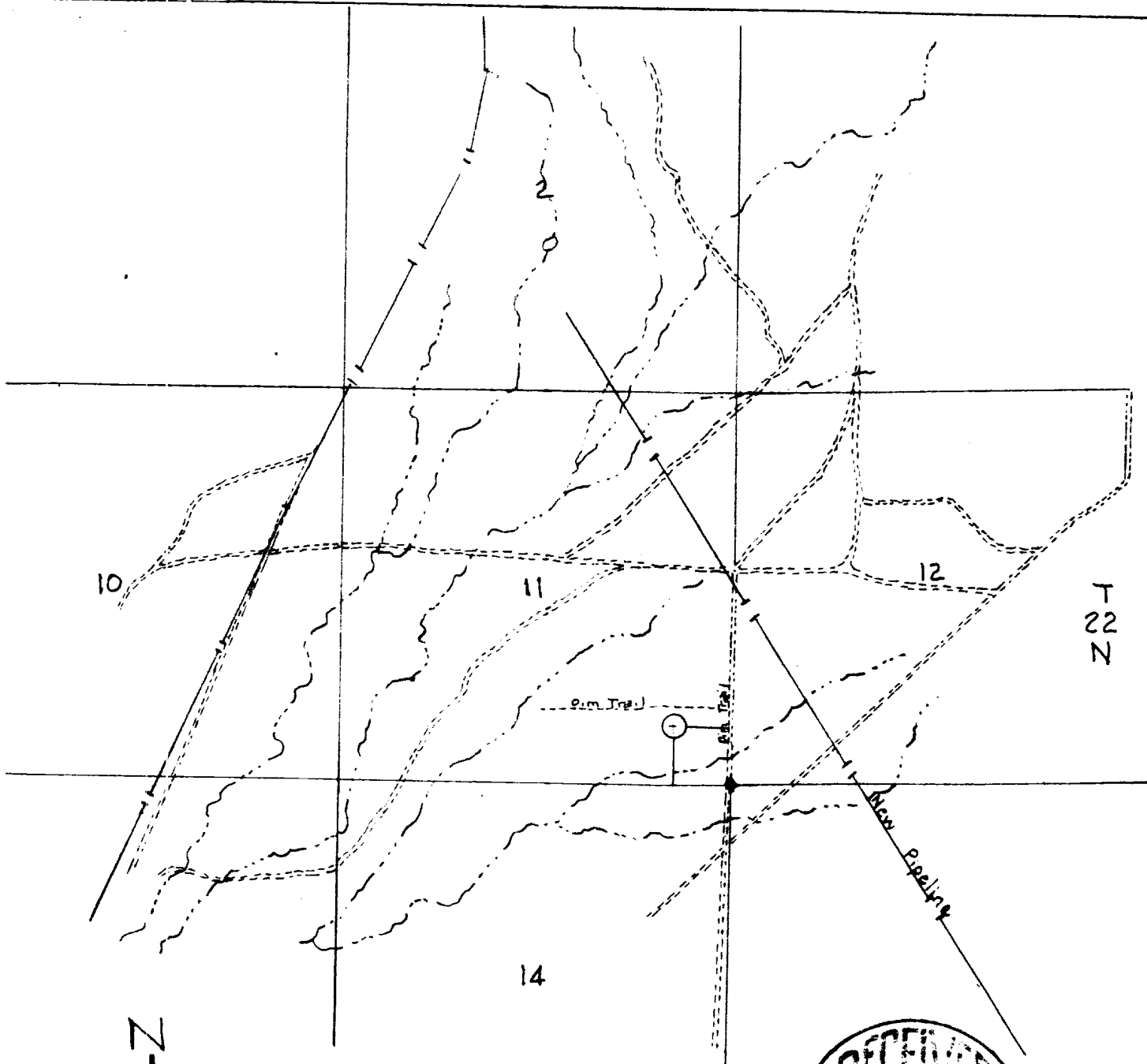
Certificate No. **1463**



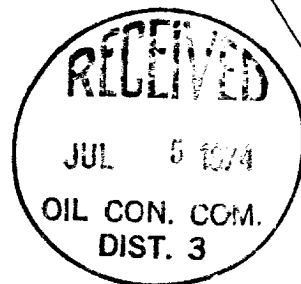
## DEVELOPMENT PLAN FOR SURFACE RESUME

Chace Oil Co. #1 Rusty Federal  
800' FSL, 800' FEL, Section 11  
T-22-N, R-7-W

1. Location and vicinity map, San Juan Engineering Company - Exit Hwy. 44 at Lybrook.
  2. 200 to 500' of road to be compacted to connect drill site with existing area roads - Road width to be 20'.
  3. Well site is 1 mile southwest of a dry hole in Unit M, Sec. 1, T-22-N, R-7W.
  4. Roads shown on vicinity plat and location plat.
  5. In case of production (gas) well will be tied into a gathering line, but market has not been established. No tank batteries or separators are anticipated at this time.
  6. Water to come from private source at Escrito Trading Post.
  7. All trash and waste material will be placed in the mud pit and covered. No additional surface to be used, such as air strips or campsites.
  8. None
  9. None
  10. Rig layout shown on township plat attached.
  11. The topography is flat, covered with blow sand and sagebrush.
  12. Drilling pad to be compacted.
  13. After well completion, location to be restored to original condition less a few sagebrush, no other vegetation seems to grow at this location.
  14. Field representative to contact is Royce McCary, Telephone 266-5562 at 313 Washington, S.E., Albuquerque, N.M. 87108.
- 



R 7 W



VICINITY MAP FOR  
CHACE OIL CO.

Showing  
Well Location in SE/4 SE/4  
Sec. 11, T22N, R7W, N.M.P.M.,  
Sandoval County, New Mexico

Scale: 1" = 2000'  
Date: 20 June, 1974

San Juan Engineering Company

Farmington, New Mexico

Township 22N, Range 7W, County SANDOVAL, State N.M.

Township 22N

Range 7W

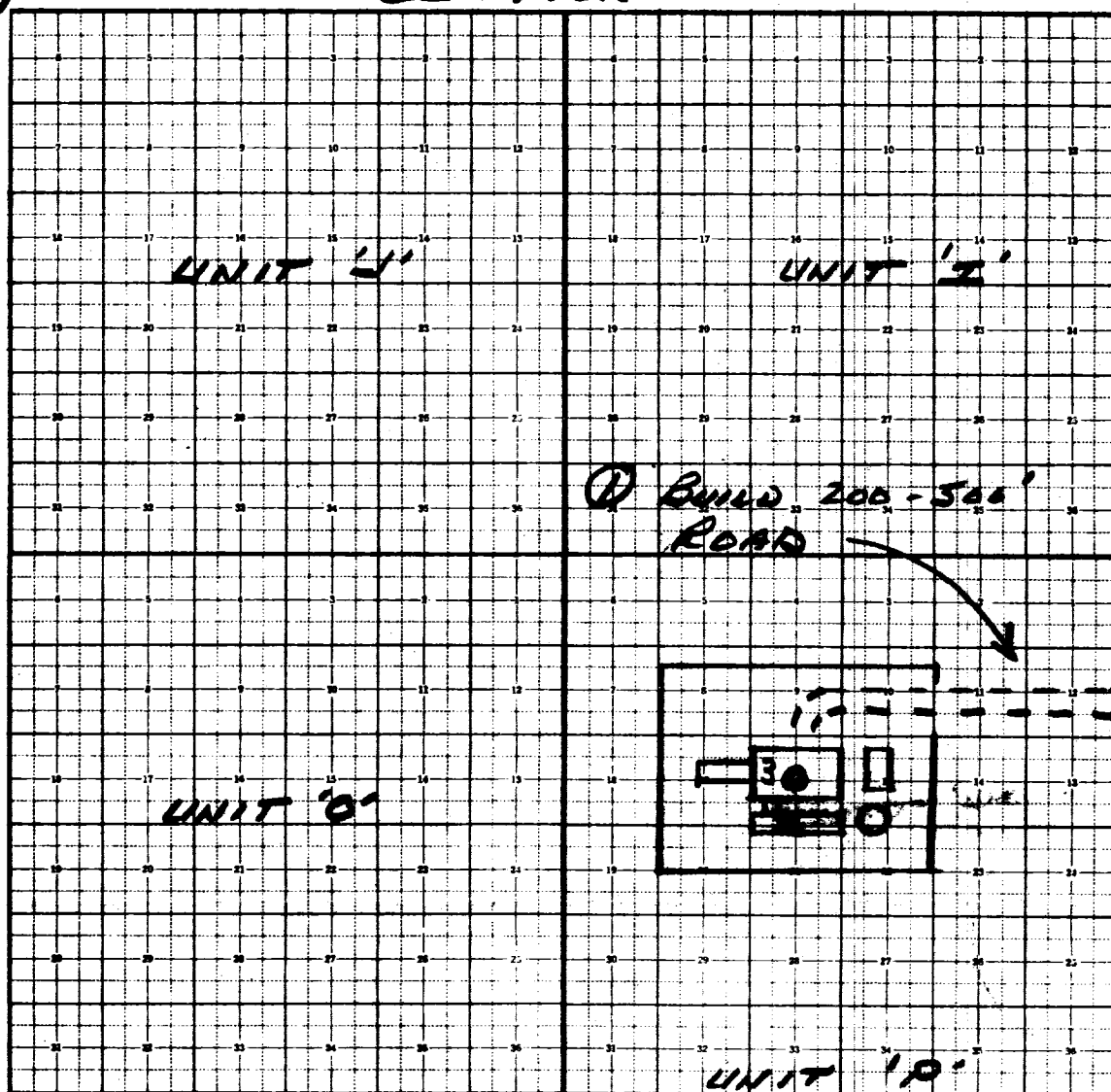
County SANDOVAL

State N. H.

11

## SECTION 11

TO  
HWY  
44



- ① BUILD 200-500' ROAD
- ② MUD SYSTEM
- ③ RIG