

UNITED STATES
DEPARTMENT OF THE INTERIOR
GEOLOGICAL SURVEY

30-043-20159

APPLICATION FOR PERMIT TO DRILL, DEEPEN, OR PLUG BACK

1a. TYPE OF WORK

DRILL ☒DEEPEN ☐PLUG BACK ☐

b. TYPE OF WELL

OIL
WELL ☒GAS
WELL ☐

OTHER

SINGLE
ZONE ☐MULTIPLE
ZONE ☐

2. NAME OF OPERATOR

Chace Oil Company, Inc.

3. ADDRESS OF OPERATOR

313 Washington, S.E. Albuquerque, N.M. 87108

4. LOCATION OF WELL (Report location clearly and in accordance with any State requirements.)*

At surface

Unit C - 500 FNL, 1800 FWL, Sec. 13,

At proposed prod. zone T-22-N, R-7-W

14. DISTANCE IN MILES AND DIRECTION FROM NEAREST TOWN OR POST OFFICE*

6 miles south of Lybrook, N.M.

15. DISTANCE FROM PROPOSED*

LOCATION TO NEAREST

PROPERTY OR LEASE LINE, FT.

(Also to nearest drlg. unit line, if any)

500'

16. NO. OF ACRES IN LEASE

540

17. NO. OF ACRES ASSIGNED
TO THIS WELL

40

18. DISTANCE FROM PROPOSED LOCATION*
TO NEAREST WELL, DRILLING, COMPLETED,
OR APPLIED FOR, ON THIS LEASE, FT.

19. PROPOSED DEPTH

4000'

20. ROTARY OR CABLE TOOLS

Rotary

21. ELEVATIONS (Show whether DF, RT, GR, etc.)

GR 7022'

22. APPROX. DATE WORK WILL START*

1-31-75

23.

PROPOSED CASING AND CEMENTING PROGRAM

SIZE OF HOLE	SIZE OF CASING	WEIGHT PER FOOT	SETTING DEPTH	QUANTITY OF CEMENT
12 1/2"	8-5/8"	22	100'	100 SXS
7-7/8"	4 1/2"	9.5	4000'	600 SXS

Set 8-5/8" surface casing @ 100' and circulate cement. Drill to 4000' run logs, if production is indicated set and cement 4 1/2" casing and cement to surface with approximately 600 sacks cement. Gun perforate, break down formation with 15% Hcl and swab in. Plug and abandon in accordance with U.S.G.S. instructions if non-productive.

IN ABOVE SPACE DESCRIBE PROPOSED PROGRAM: If proposal is to deepen or plug back, give data on present productive zone and proposed new productive zone. If proposal is to drill or deepen directionally, give pertinent data on subsurface locations and measured and true vertical depths. Give blowout preventer program, if any.

24.

SIGNED

Loyce M. Cary

TITLE President

DATE 1-12-75

(This space for Federal or State office use)

PERMIT NO.

APPROVAL DATE

APPROVED BY

CONDITIONS OF APPROVAL, IF ANY:

Chace

TITLE

RECEIVED
JAN 17 1975U. S. GEOLOGICAL SURVEY
BIRMINGHAM, COLO.

*See Instructions On Reverse Side

WELL LOCATION AND ACREAGE DEDICATION PLAT

DATE: 1-12-75

CHACE OIL COMPANY

Gulf

FEDERAL

1

C

13

22 NORTH

7 WEST

SANDOVAL

500

NORTH

1800

WEST

7022.0

Undesignated Mesquite

40

1. Outline the acreage dedicated to the subject well by colored pencil or hatchure marks on the plat below.
2. If more than one lease is dedicated to the well, outline each and identify the ownership thereof (both as to working interest and royalty).
3. If more than one lease of different ownership is dedicated to the well, have the interests of all owners been consolidated by communitization, unitization, force-pooling, etc?

Yes

No

If answer is "yes," type of consolidation _____

If answer is "no," list the owners and tract descriptions which have actually been consolidated. (Use reverse side of this form if necessary.) _____

No allowable will be assigned to the well until all interests have been consolidated (by communitization, unitization, force-pooling, or otherwise) or until a non-standard unit, including such interests, has been approved by the Commission.

CERTIFICATION

I hereby certify that the information contained herein is true and complete to the best of my knowledge and belief.

Royce McCary
Royce McCary

President

Chace Oil Company, Inc.

1-12-75

I hereby certify that the well location shown on this plat is true and correct to the best of my knowledge and belief.

January, 1975

JAMES P. LOESCH

James P. Loesch
2563

Sec. 13

JAN 20 1975

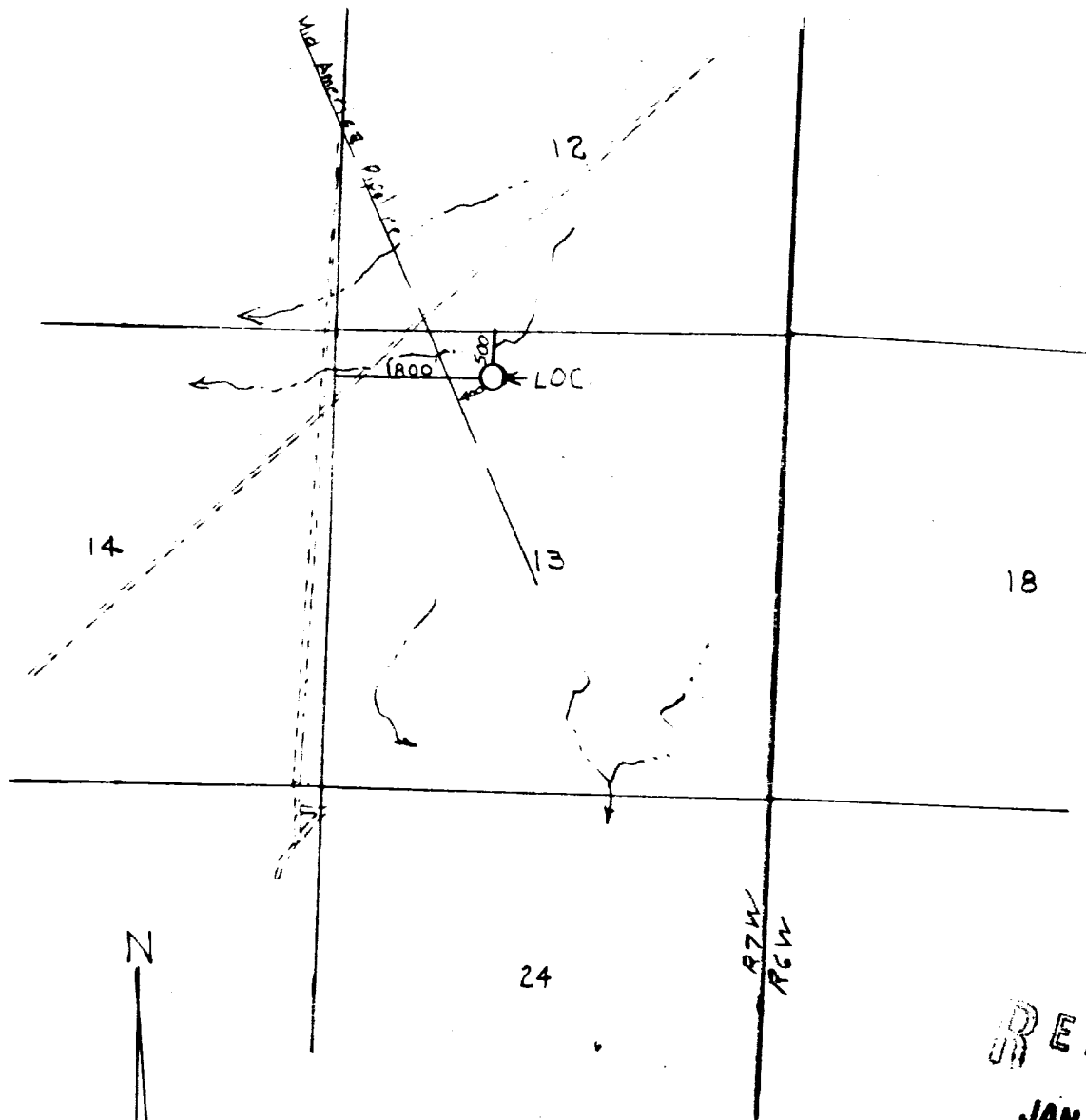
OIL CON. COM.
DIST 3

DEVELOPMENT PLAN FOR SURFACE RESUME

Chace Oil Company, Inc. #1 Gulf Federal
500 FNL, 1800 FWL Section 13
T22N, R7W - Sandoval County N.M.

1. Location and vicinity map, San Juan Engineering Company; Exit highway 44 going southwest at Lybrook N.M.
2. 900 feet of road to be compacted to connect drill site with existing area road. Road width to be 20 feet.
3. Well site is 6,690 feet south-southwest of a dry hole in unit M section 1, and 2900 feet south and east of Chace Oil Company's oil well in the SE $\frac{1}{4}$ of section 11, both wells being in T22N, R7W.
4. Roads shown on vicinity plat and on the rig location plat.
5. In case of production (gas), well will be tied into gathering line, but market has not been established. No tank battery or separators are planned at this time.
6. Water to come from private source at Lybrook.
7. All trash and waste material will be placed in the mud pit and covered. No additional surface to be used, such as air strips or campsites.
8. None
9. None
10. Rig layout shown on township plat attached.
11. The topography is flat, covered with blow sand and sagebrush.
12. Drilling pad to be compacted.
13. After well completion, location to be restored to original condition less a few sagebrush, no other vegetation seems to grow at this location.
14. Field representative to contact is Royce McCary, Telephone 266-5562 at 313 Washington, S.E, Albuquerque, N.M. 87104

RECEIVED
JAN 17 1975
U. S. GEOLOGICAL SURVEY
DURANGO, COLO.



RECEIVED

JAN 17 1975

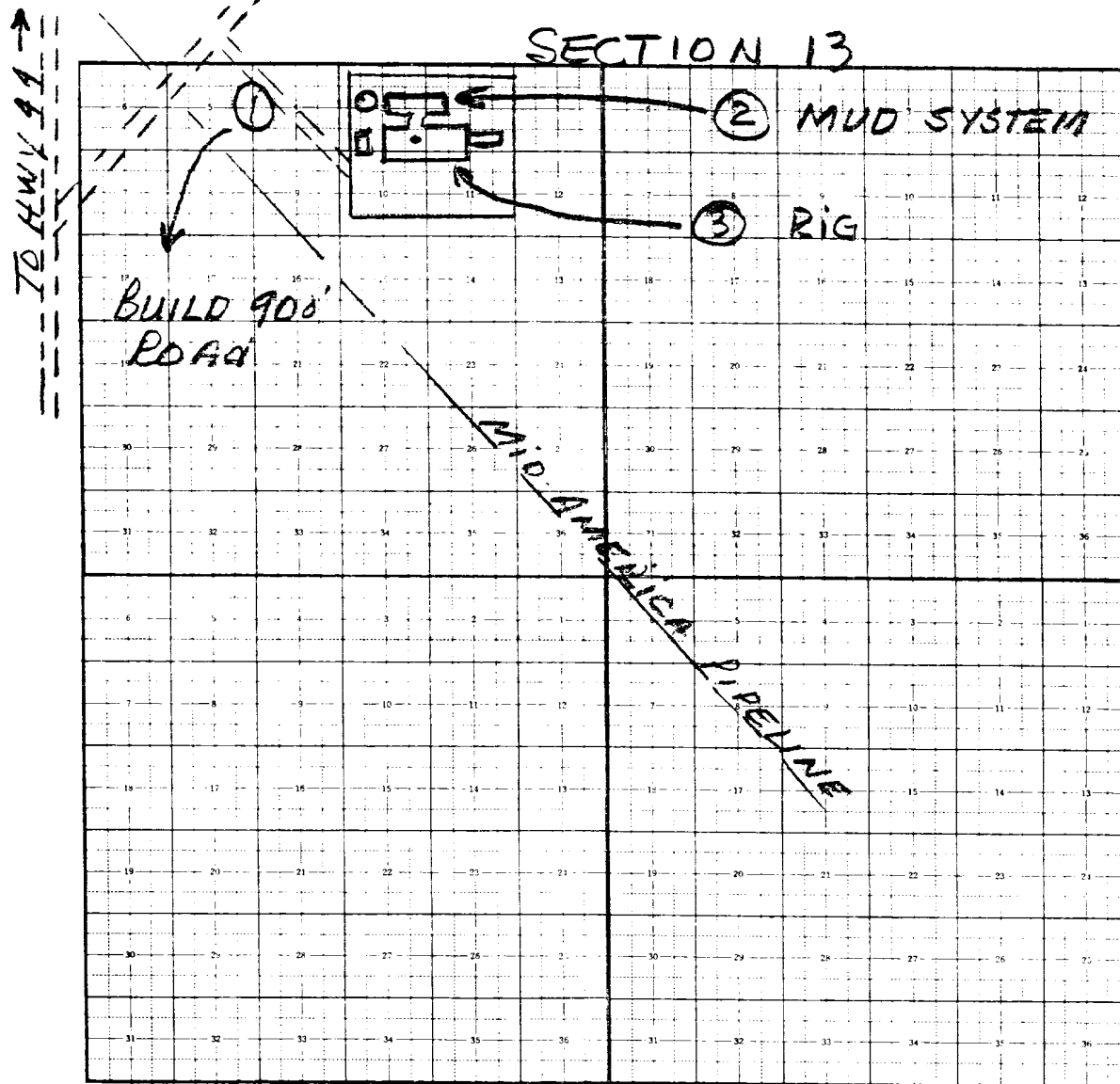
U.S. GEOLOGICAL SURVEY
DURANGO, COLO.

Vicinity Map For
CHACE OIL COMPANY
showing
Well Location in NE/4NW/4
Sec. 13, T22N, R7W, N.M.P.M.,
Sandoval County, New Mexico

Scale 1" = 2000' Date 1-8-1975

TOWNSHIP PLAT

Township 22N Range 7W County SANDOVAL State N.M.



- ① Build 900' Road
- ② MUD SYSTEM
- ③ Rig

RECEIVED

JAN 17 1975

U. S. GEOLOGICAL SURVEY
DURANGO, COLO.