

UNITED STATES  
DEPARTMENT OF THE INTERIOR  
GEOLOGICAL SURVEY

30-043-20166

5. LEASE DESIGNATION AND SERIAL NO.

NM 17180

6. IF INDIAN, ALLOTTEE OR TRIBE NAME

7. UNIT AGREEMENT NAME

8. FARM OR LEASE NAME

FEDERAL 19

9. WELL NO.

#1

10. FIELD AND POOL, OR WILDCAT

WILDCAT

11. SEC., T., R., M., OR BLK.  
AND SURVEY OR AREA

SEC. 19, T20N, R2W

12. COUNTY OR PARISH 13. STATE

SANDOVAL N.M.

## 1a. TYPE OF WORK

DRILL ☒DEEPEN ☐PLUG BACK ☐

## b. TYPE OF WELL

OIL  
WELL ☒GAS  
WELL ☐

OTHER

SINGLE  
ZONE ☒MULTIPLE  
ZONE ☐

## 2. NAME OF OPERATOR

FILON EXPLORATION CORPORATION

## 3. ADDRESS OF OPERATOR

c/o MINERALS MANAGEMENT INC.

501 AIRPORT DR., SUITE 210, FARMINGTON, NEW MEXICO

## 4. LOCATION OF WELL (Report location clearly and in accordance with any State requirements.)\*

At surface

990FSL, 1980FWL, SEC. 19, T20N, R2W  
At proposed prod. zone

## 14. DISTANCE IN MILES AND DIRECTION FROM NEAREST TOWN OR POST OFFICE\*

10 MILES SW OF CUBA, NEW MEXICO

## 15. DISTANCE FROM PROPOSED\*

LOCATION TO NEAREST

PROPERTY OR LEASE LINE, FT.

(Also to nearest drlg. unit line, if any)

990'

## 16. NO. OF ACRES IN LEASE

1992.50

## 17. NO. OF ACRES ASSIGNED

TO THIS WELL

40

## 18. DISTANCE FROM PROPOSED LOCATION\*

TO NEAREST WELL, DRILLING, COMPLETED,  
OR APPLIED FOR, ON THIS LEASE, FT.

-

## 19. PROPOSED DEPTH

6100

## 20. ROTARY OR CABLE TOOLS

ROTARY

## 21. ELEVATIONS (Show whether DF, RT, GR, etc.)

6900 GR

## 22. APPROX. DATE WORK WILL START\*

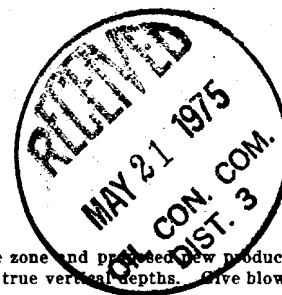
JUNE 15, 1975

## 23.

## PROPOSED CASING AND CEMENTING PROGRAM

SIZE OF HOLE	SIZE OF CASING	WEIGHT PER FOOT	SETTING DEPTH	QUANTITY OF CEMENT
15"	10 3/4"	40.5	300	300 sx.
8 3/4"	7"	20-26#	6100	300-500 sx. (2 stage)

Filon Exploration Corporation (Operator) proposes to drill well to test Entrada formation. Completion will be determined from logs. A Series 900 (3000 psi w p) blowout preventer will be used under surface pipe. Designation of operator will be filed.



IN ABOVE SPACE DESCRIBE PROPOSED PROGRAM: If proposal is to deepen or plug back, give data on present productive zone and proposed new productive zone. If proposal is to drill or deepen directionally, give pertinent data on subsurface locations and measured and true vertical depths. Give blowout preventer program, if any.

24.

SIGNED

*J. Arnold Snell*

Area Manager

TITLE Minerals Management Inc. DATE 5-19-75

(This space for Federal or State office use)

PERMIT NO.

APPROVAL DATE

APPROVED BY

*SM*

TITLE

DATE

CONDITIONS OF APPROVAL, IF ANY:

\*See Instructions On Reverse Side

**NEW MEXICO OIL CONSERVATION COMMISSION  
WELL LOCATION AND ACREAGE DEDICATION PLAT**

Form C-102  
Supersedes C-128  
Effective 1-1-65

All distances must be from the outer boundaries of the Section.

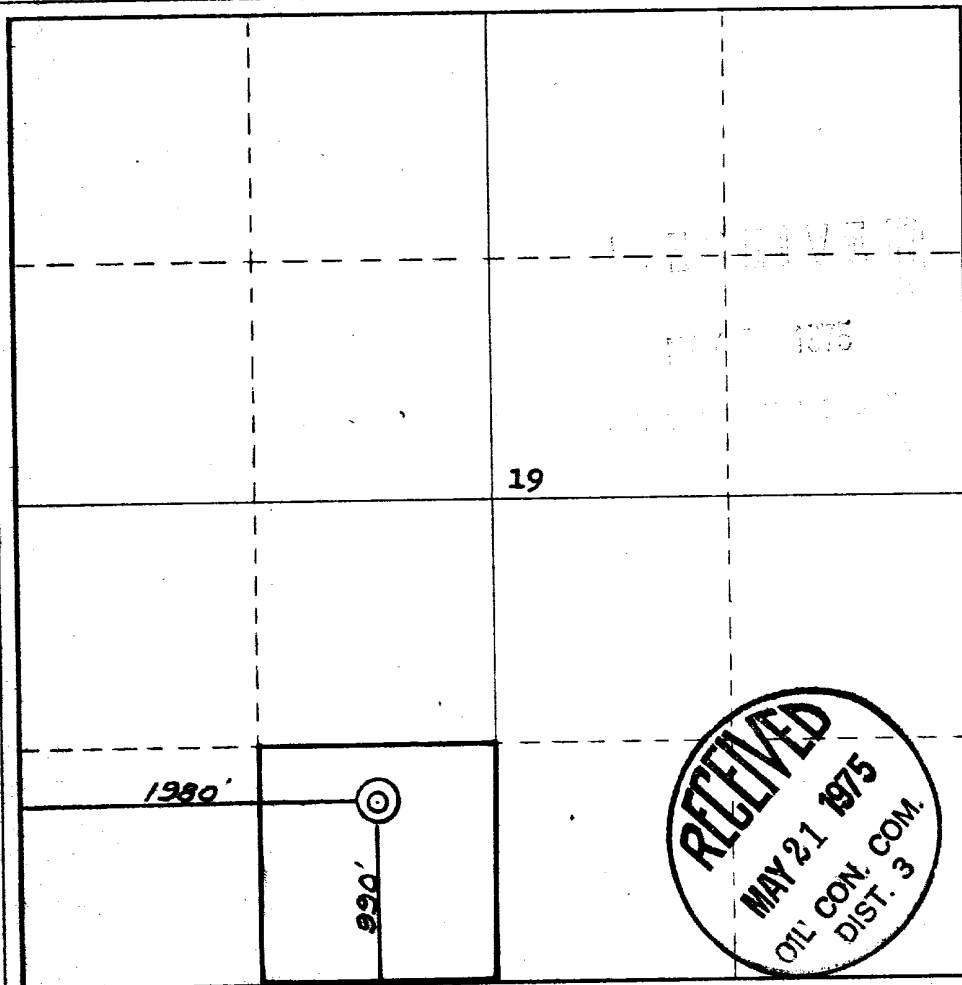
Operator <b>PILON EXPLORATION CORPORATION</b>			Lease <b>FEDERAL 19</b>		Well No. <b>#1</b>
Unit Letter <b>N</b>	Section <b>19</b>	Township <b>20 NORTH</b>	Range <b>2 WEST</b>	County <b>SANDOVAL</b>	
Actual Footage Location of Well:					
<b>990</b> feet from the <b>SOUTH</b> line and		<b>1980</b> feet from the <b>WEST</b> line			
Ground Level Elev. <b>6900</b>	Producing Formation <b>ENTRADA</b>	Pool <b>WILDCAT</b>	Dedicated Acreage: <b>40</b> Acres		

1. Outline the acreage dedicated to the subject well by colored pencil or hachure marks on the plat below.
2. If more than one lease is dedicated to the well, outline each and identify the ownership thereof (both as to working interest and royalty).
3. If more than one lease of different ownership is dedicated to the well, have the interests of all owners been consolidated by communitization, unitization, force-pooling, etc?

☐ Yes    ☐ No    If answer is "yes," type of consolidation \_\_\_\_\_

If answer is "no," list the owners and tract descriptions which have actually been consolidated. (Use reverse side of this form if necessary.) \_\_\_\_\_

No allowable will be assigned to the well until all interests have been consolidated (by communitization, unitization, forced-pooling, or otherwise) or until a non-standard unit, eliminating such interests, has been approved by the Commission.



**CERTIFICATION**

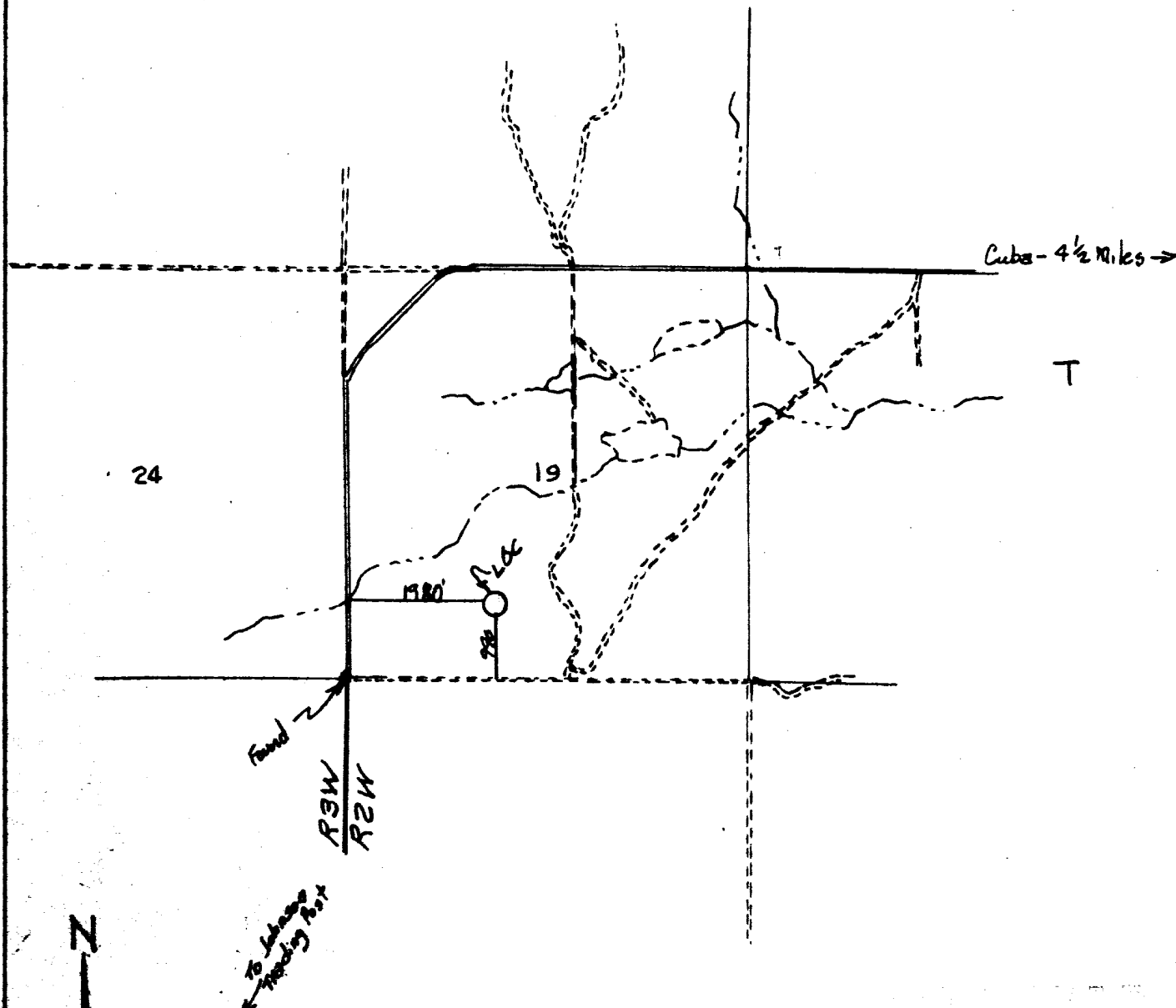
I hereby certify that the information contained herein is true and complete to the best of my knowledge and belief.

Name J. Arnold Inell  
 Position AREA MANAGER  
 Company MINERALS MANAGEMENT INC.  
 Date MAY 19, 1975

I hereby certify that the well location shown on this plat was plotted from field notes of actual surveys made by me or under my supervision, and that the same is true and correct to the best of my knowledge and belief.

Date Surveyed 15 May 1975  
 Registered Professional Engineer and/or Land Surveyor  
James P. Reese  
 Certificate No. JAMES P. REESE

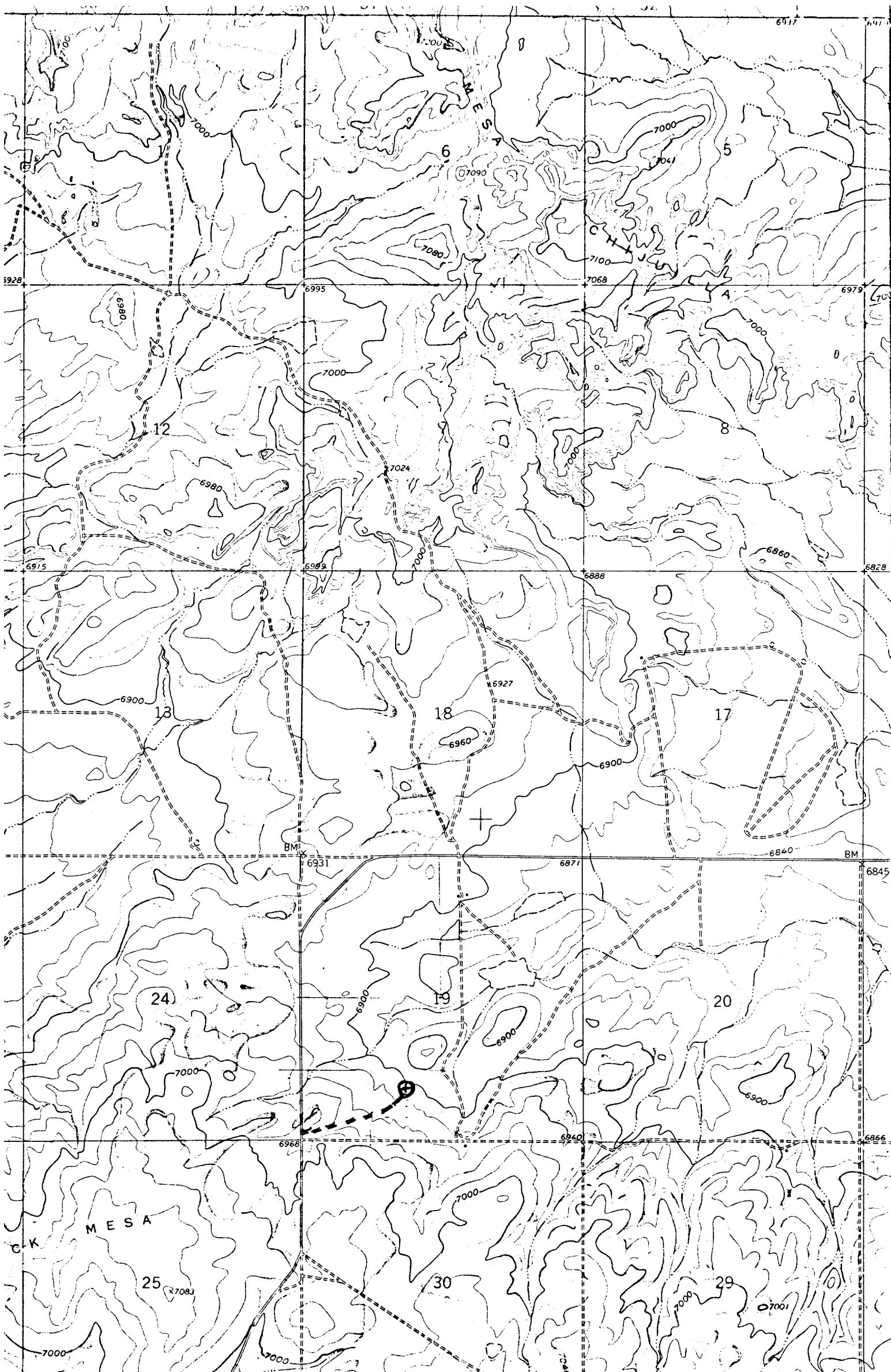
0 330 660 990 1320 1650 1980 2310 2640 2000 1500 1000 500 0



MAY 21 1975

San Juan Engineering Company  
Farmington, N.M.

VICINITY MAP FOR  
FILON EXPLORATION CORPORATION  
Well Location in SE/4 SW/4 sec. 19,  
T20N, R2W, N.M.P.M., Sandoval  
County, New Mexico  
Scale: 1" = 2000' Date: 5/15/1975  
San Juan Engineering Company  
Farmington, New Mexico



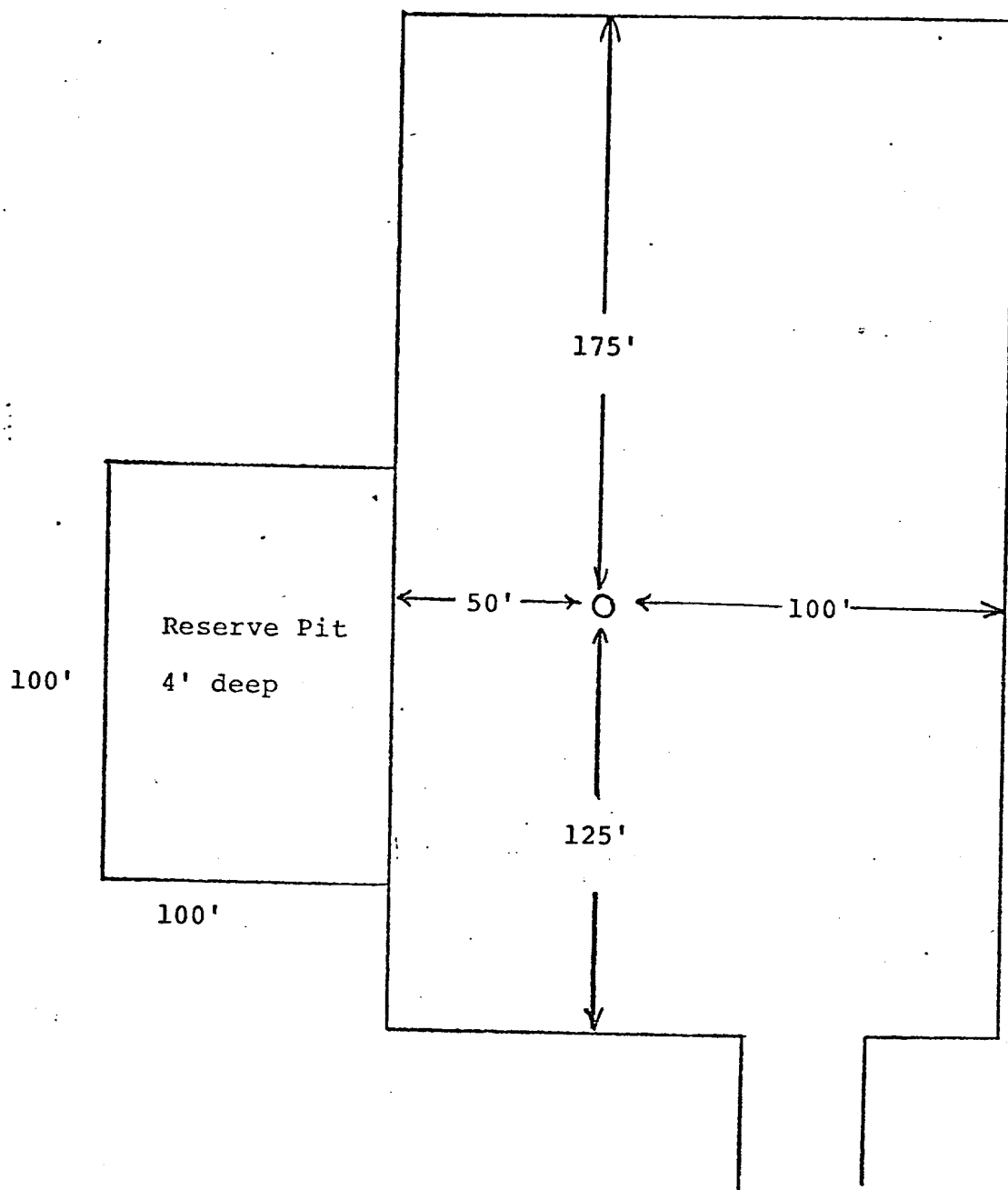
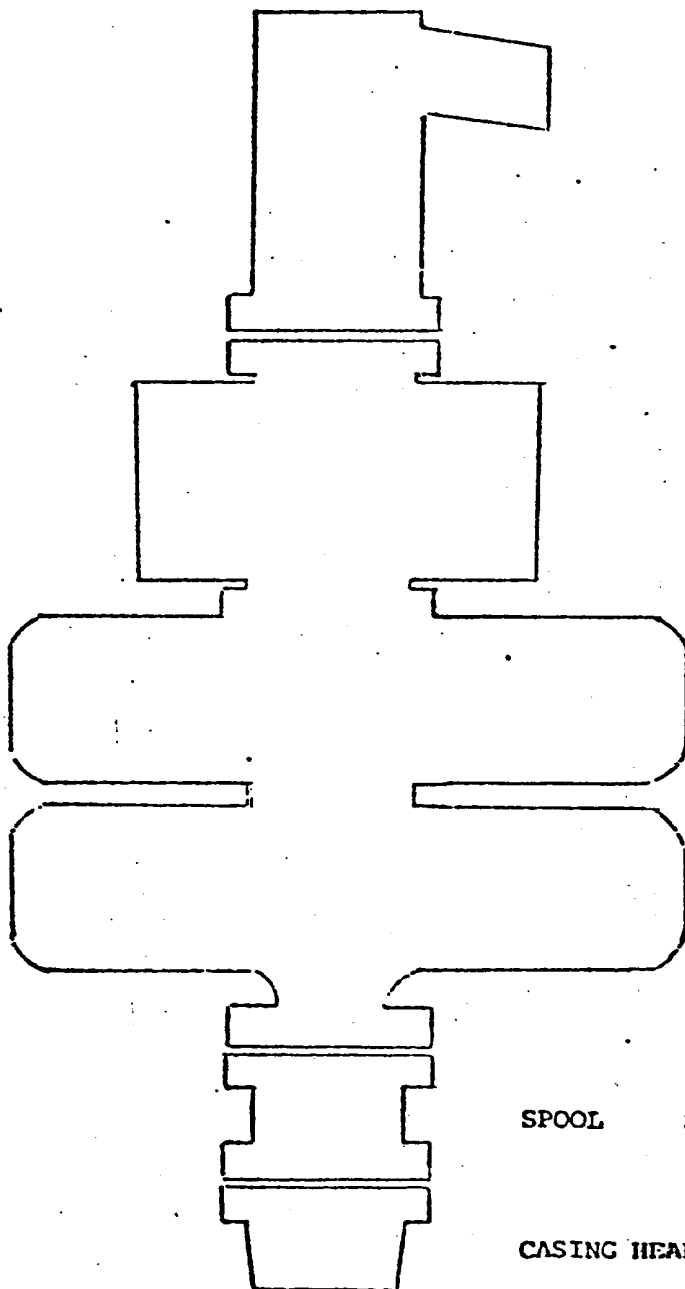


DIAGRAM OF WELL LOCATION

MMI BLOWOUT PREVENTER DIAGRAM (HYDRAULIC)

CHOKE MANIFOLD IS X IS NOT \_\_\_\_\_ REQUIRED



HYDRIL SIZE \_\_\_\_\_ SERIES \_\_\_\_\_

DOUBLE GATE SIZE 10"  
SERIES 900

SPOOL SIZE \_\_\_\_\_ SERIES \_\_\_\_\_

CASING HEAD SIZE 10" SERIES 900



MINERALS  
MANAGEMENT INC.

TELEPHONE (505) 327-4441  
501 AIRPORT DRIVE—PETROLEUM CENTER BUILDING  
SUITE 210  
FARMINGTON, NEW MEXICO 87401

May 19, 1975



DEVELOPMENT PLAN FOR SURFACE USE

FILON EXPLORATION CORPORATION

FEDERAL 19 WELL NO. 1

990 FSL, 1980 FWL, SECTION 19, T20N, R2W

SANDOVAL COUNTY, NEW MEXICO

1. Existing Roads

The drillsite is located approximately .4 miles east of New Mexico State Highway 197 as shown on the attached topographic map.

2. Planned Access Roads

It is anticipated that approximately .4 miles of new road will be required. The trail shown on the topographic map is narrow and tree lined with pinon trees. The proposed access route will not disturb any trees.

3. Location of Existing Wells

None in the immediate area.

4. Lateral Roads

Shown on the attached topographic map.

5. Location of Tank Batteries and Flowlines

Will be initially located on the drill pad approximately 150 feet from the well if production is encountered.

6. Water Supply

Water will be hauled from water well in Media Dome Field approximately six miles southwest of proposed drillsite.

7. Method of Handling Waste Disposal

Waste will be buried in the reserve pit on completion of the well. The reserve pit will be backfilled. Toilet facilities will be provided.

8. Location of Camp

No camp will be used.

9. Location of Airstrip

None

10. Diagram of Well Location

See attached diagram

11. Plans for Restoration of Surface

The surface will be restored and reseeded as directed by Bureau of Land Management.

12. Impact on the Environment

Impact on the environment will be minimal. The access road and well location is sparsely vegetated and no trees will be disturbed.