

UNITED STATES
DEPARTMENT OF THE INTERIOR
GEOLOGICAL SURVEY

30-043-20174

APPLICATION FOR PERMIT TO DRILL, DEEPEN, OR PLUG BACK

1a. TYPE OF WORK

DRILL ☒

DEEPEN ☐

PLUG BACK ☐

b. TYPE OF WELL

OIL
WELL ☒

GAS
WELL ☐

OTHER

SINGLE
ZONE ☐

MULTIPLE
ZONE ☒

2. NAME OF OPERATOR

Nuclear Corporation of New Mexico

3. ADDRESS OF OPERATOR

411 Grant Ave., Santa Fe, New Mexico 87501

4. LOCATION OF WELL (Report location clearly and in accordance with any State requirements.)*

At surface

SW1/4 14, T19N, R1W

At proposed prod. zone

same

14. DISTANCE IN MILES AND DIRECTION FROM NEAREST TOWN OR POST OFFICE*

10 miles S. Cuba, New Mexico

15. DISTANCE FROM PROPOSED*

LOCATION TO NEAREST

PROPERTY OR LEASE LINE, FT.

(Also to nearest drlg. unit line, if any, 97' to N-S

16. NO. OF ACRES IN LEASE

2.480

17. NO. OF ACRES ASSIGNED
TO THIS WELL

18. DISTANCE FROM PROPOSED LOCATION*

TO NEAREST WELL, DRILLING, COMPLETED,

OR APPLIED FOR, ON THIS LEASE, FT.

None

19. PROPOSED DEPTH

2807

20. ROTARY OR CABLE TOOLS

Rotary

21. ELEVATIONS (Show whether DF, RT, GR, etc.)

Ground Level

22. APPROX. DATE WORK WILL START*

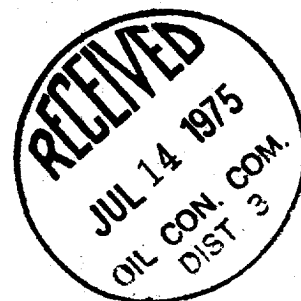
December 1974

23.

PROPOSED CASING AND CEMENTING PROGRAM

SIZE OF HOLE	SIZE OF CASING	WEIGHT PER FOOT	SETTING DEPTH	QUANTITY OF CEMENT
6 3/4	5 1/2	14 J-55	2800	120 Barrels

This was a uranium test which discovered shows of oil and completion as an oil well will be attempted.



IN ABOVE SPACE DESCRIBE PROPOSED PROGRAM: If proposal is to deepen or plug back, give data on present productive zone and proposed new productive zone. If proposal is to drill or deepen directionally, give pertinent data on subsurface locations and measured and true vertical depths. Give blowout preventer program, if any.

24. Nuclear Corporation of NM

SIGNED

Barthelme

TITLE

President

DATE

June 30, 1975

(This space for Federal or State office use)

PERMIT NO.

APPROVAL DATE

APPROVED BY

TITLE

DATE

CONDITIONS OF APPROVAL, IF ANY:

Instructions

General: This form is designed for submitting proposals to perform certain well operations, as indicated, on all types of lands and leases for appropriate action by either a Federal or a State agency, or both, pursuant to applicable Federal and/or State laws and regulations. Any necessary special instructions concerning the use of this form and the number of copies to be submitted, particularly with regard to local, area, or regional procedures and practices, either are shown below or will be issued by, or may be obtained from, the local Federal and/or State office.

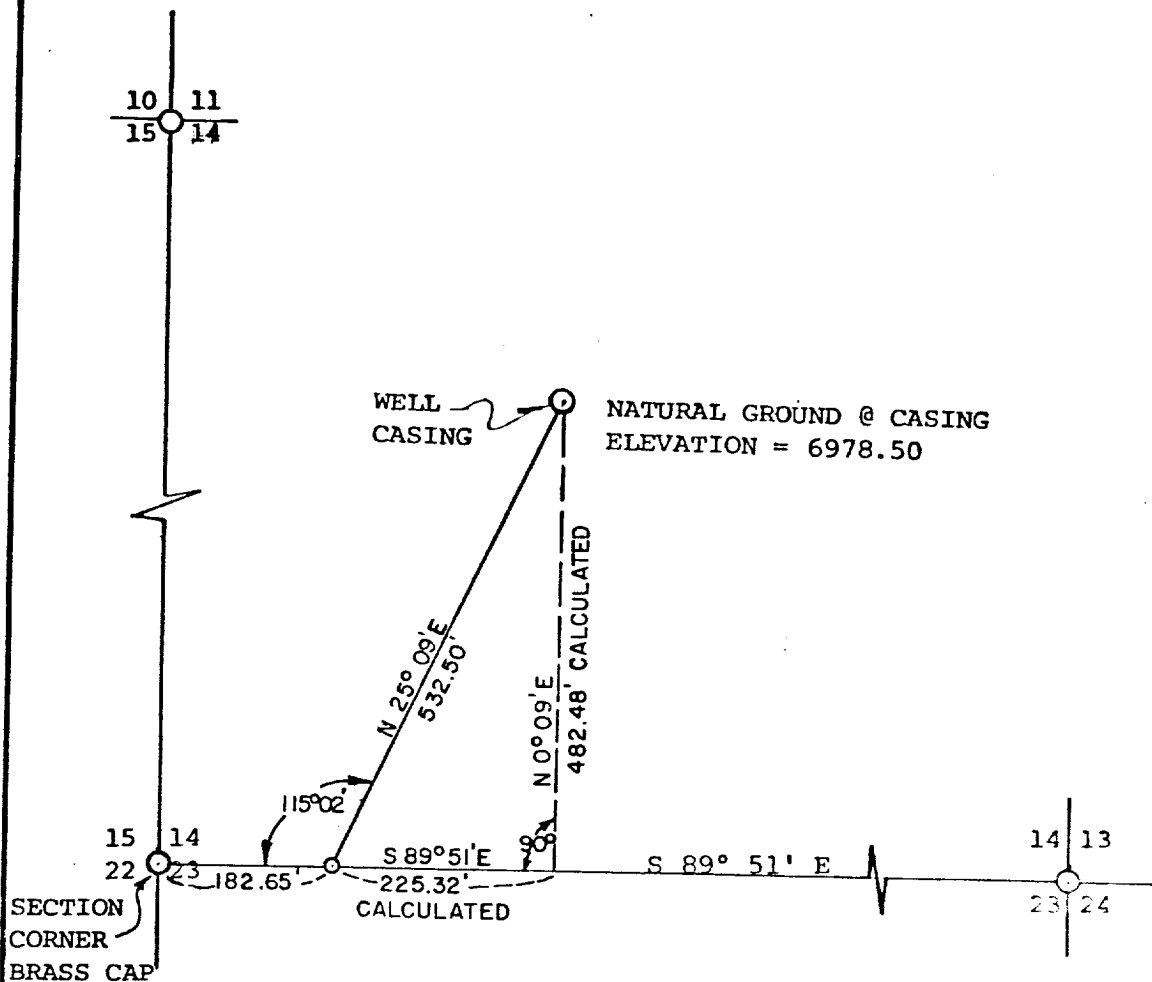
Item 1: If the proposal is to Federal to the same reservoir at a different subsurface location or to a new reservoir, use this form with appropriate notations. Consult applicable State or Federal regulations concerning subsequent work proposals or reports on the well.

Item 4: If there are no applicable State requirements concerning locations on Federal or Indian land should be described in accordance with Federal requirements. Consult local State or Federal office for specific instructions.

Item 14: Needed only when location of well cannot readily be found by road from the land or lease description. A plat, or plats, separate or on this reverse side, showing the roads to, and the surveyed location of the well, and any other required information, should be furnished when required by Federal or State agency offices.

Items 15 and 18: If well is to be, or has been, directionally drilled, give distances for subsurface location of hole in any present or objective production zone.

Item 22: Consult applicable Federal or State regulations, or appropriate officials, concerning approval of the proposal before operations are started.



I HEREBY CERTIFY THAT THIS PLAT REPRESENTS A
FIELD SURVEY OF A STEEL CASING WELL LOCATION
AND THAT SURVEY IS TRUE AND CORRECT TO THE
BEST OF MY KNOWLEDGE AND BELIEF.

John West
JOHN WEST

JOHN W. WEST
REGISTERED PROFESSIONAL ENGINEER AND LAND SURVEYOR
NEW MEXICO NO. 676 TEXAS NO. 1138 COLORADO NO. 2980

SURVEY LOCATION: SECTION 14 T19N R1W
OF THE NEW MEXICO PRINCIPAL MERIDIAN
IN NEW MEXICO

SURVEYED BY: JOHN WEST & ASSOCIATES
CONSULTING ENGINEERS
117 JEFFERSON STREET
SANTA FE, NEW MEXICO

DATE JULY 3, 1975

SCALE: 1"=200'

NEW MEXICO OIL CONSERVATION COMMISSION
WELL LOCATION AND ACREAGE DEDICATION PLAT

Form C-102
Supersedes C-128
Effective 1-1-65

All distances must be from the outer boundaries of the Section.

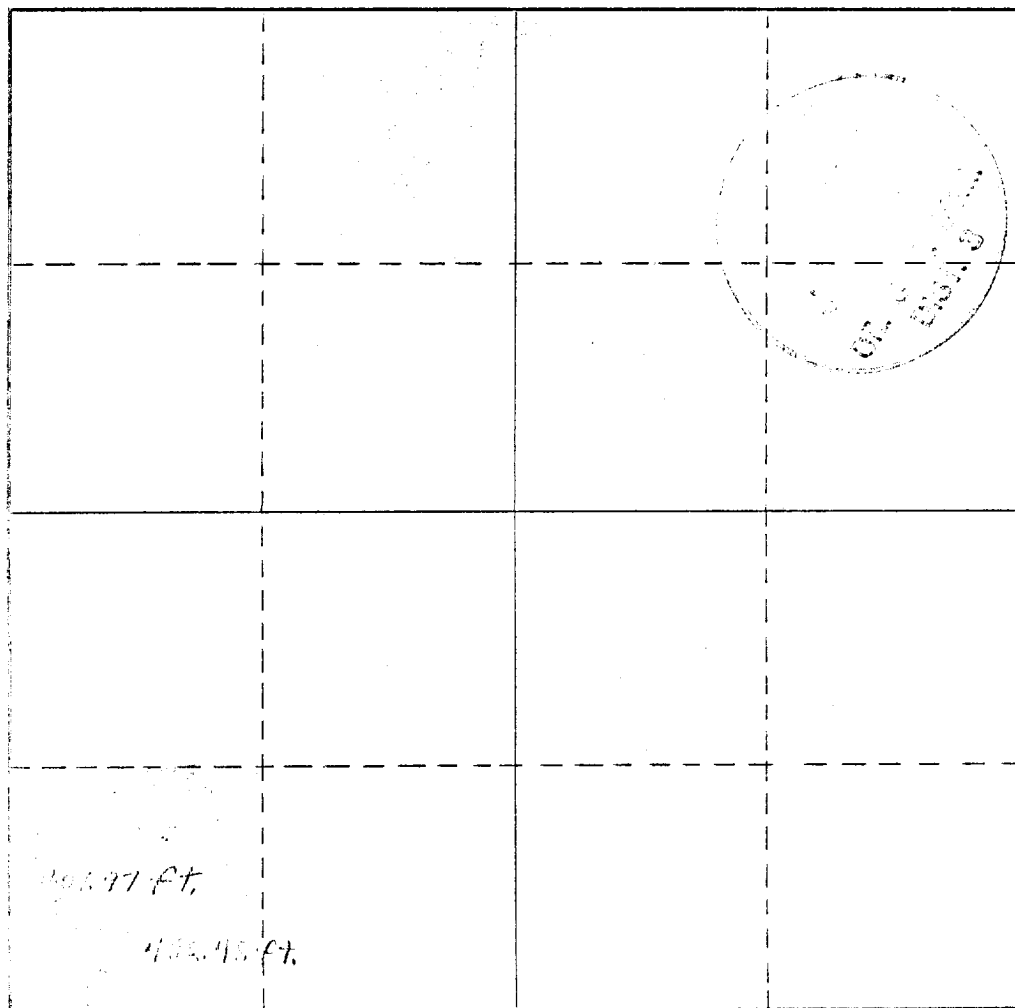
Operator Nuclear Corp. of NM		Lease Federal		Well No. La Ventana #1	
Unit Letter 1A	Section 14	Township 19 North	Range 1 West	County Sandoval	
Actual Footage Location of Well: (407.97) 408 feet from the West line and (482.48) 484 feet from the South line					
Ground Level Elev. 6978.50	Producing Formation		Pool Wildcat	Dedicated Acreage: 40 Acres	

1. Outline the acreage dedicated to the subject well by colored pencil or hachure marks on the plat below.
2. If more than one lease is dedicated to the well, outline each and identify the ownership thereof (both as to working interest and royalty).
3. If more than one lease of different ownership is dedicated to the well, have the interests of all owners been consolidated by communitization, unitization, force-pooling, etc?

☐ Yes ☐ No If answer is "yes," type of consolidation not applicable

If answer is "no," list the owners and tract descriptions which have actually been consolidated. (Use reverse side of this form if necessary.)

No allowable will be assigned to the well until all interests have been consolidated (by communitization, unitization, forced-pooling, or otherwise) or until a non-standard unit, eliminating such interests, has been approved by the Commission.



CERTIFICATION

I hereby certify that the information contained herein is true and complete to the best of my knowledge and belief.

Name
Garrett R. Quintana

Position
President

Company
Nuclear Corp. of NM

Date
July 18, 1975

I hereby certify that the well location shown on this plat was plotted from field notes of actual surveys made by me or under my supervision, and that the same is true and correct to the best of my knowledge and belief.

Date Surveyed
July 3, 1975

Registered Professional Engineer and/or Land Surveyor

John West & Assoc.

Certificate No.
676

