

UNITED STATES  
DEPARTMENT OF THE INTERIOR  
GEOLOGICAL SURVEY

30-043-20184

## APPLICATION FOR PERMIT TO DRILL, DEEPEN, OR PLUG BACK

## 1a. TYPE OF WORK

DRILL ☒DEEPEN ☐PLUG BACK ☐

## b. TYPE OF WELL

OIL

WELL ☒

GAS

WELL ☐

OTHER

SINGLE  
ZONE ☒MULTIPLE  
ZONE ☐

## 2. NAME OF OPERATOR

FILON EXPLORATION CORPORATION c/o Minerals Management Inc.

## 3. ADDRESS OF OPERATOR

501 Airport Dr., Suite 210, Farmington, New Mexico

## 4. LOCATION OF WELL (Report location clearly and in accordance with any State requirements.)\*

At surface

2130' FNL, 2000 FEL, SEC. 18, T20N, R2W

At proposed prod. zone

## 14. DISTANCE IN MILES AND DIRECTION FROM NEAREST TOWN OR POST OFFICE\*

9 miles SW of Cuba, New Mexico

## 15. DISTANCE FROM PROPOSED\*

LOCATION TO NEAREST

PROPERTY OR LEASE LINE, FT.

(Also to nearest drlg. unit line, if any)

2000'

## 16. NO. OF ACRES IN LEASE

800

## 18. DISTANCE FROM PROPOSED LOCATION\*

TO NEAREST WELL, DRILLING, COMPLETED,  
OR APPLIED FOR, ON THIS LEASE, FT.

-

## 19. PROPOSED DEPTH

6300'

## 21. ELEVATIONS (Show whether DF, RT, GR, etc.)

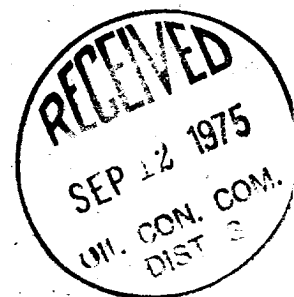
6933 GR

## 23.

## PROPOSED CASING AND CEMENTING PROGRAM

SIZE OF HOLE	SIZE OF CASING	WEIGHT PER FOOT	SETTING DEPTH	QUANTITY OF CEMENT
15"	10 3/4"	40.5#	400	400 SX
8 3/4"	7"	23-26#	6300	300-500 SX (2stage)

Filon Exploration Corporation (Operator) proposes a Jurassic test to 6300'. Completion will be determined from logs. A Series 900 (3000 psi W p) blowout preventer will be used under surface pipe. Designation of operator will be filed.



IN ABOVE SPACE DESCRIBE PROPOSED PROGRAM: If proposal is to deepen or plug back, give data on present productive zone and proposed new productive zone. If proposal is to drill or deepen directionally, give pertinent data on subsurface locations and measured and true vertical depths. Give blowout preventer program, if any.

## 24.

SIGNED

J. Arnold Sull

Area Manager

TITLE Minerals Management Inc. DATE 9-8-75

(This space for Federal or State office use)

PERMIT NO.

APPROVAL DATE

APPROVED BY

TITLE

DATE

CONDITIONS OF APPROVAL, IF ANY:

\*See Instructions On Reverse Side

SEP 12 1975

U.S. GEOLOGICAL SURVEY  
WASHINGTON, D.C.

NEW MEXICO OIL CONSERVATION COMMISSION  
WELL LOCATION AND ACREAGE DEDICATION PLAT

Form C-102  
Supersedes C-128  
Effective 1-1-65

All distances must be from the outer boundaries of the Section.

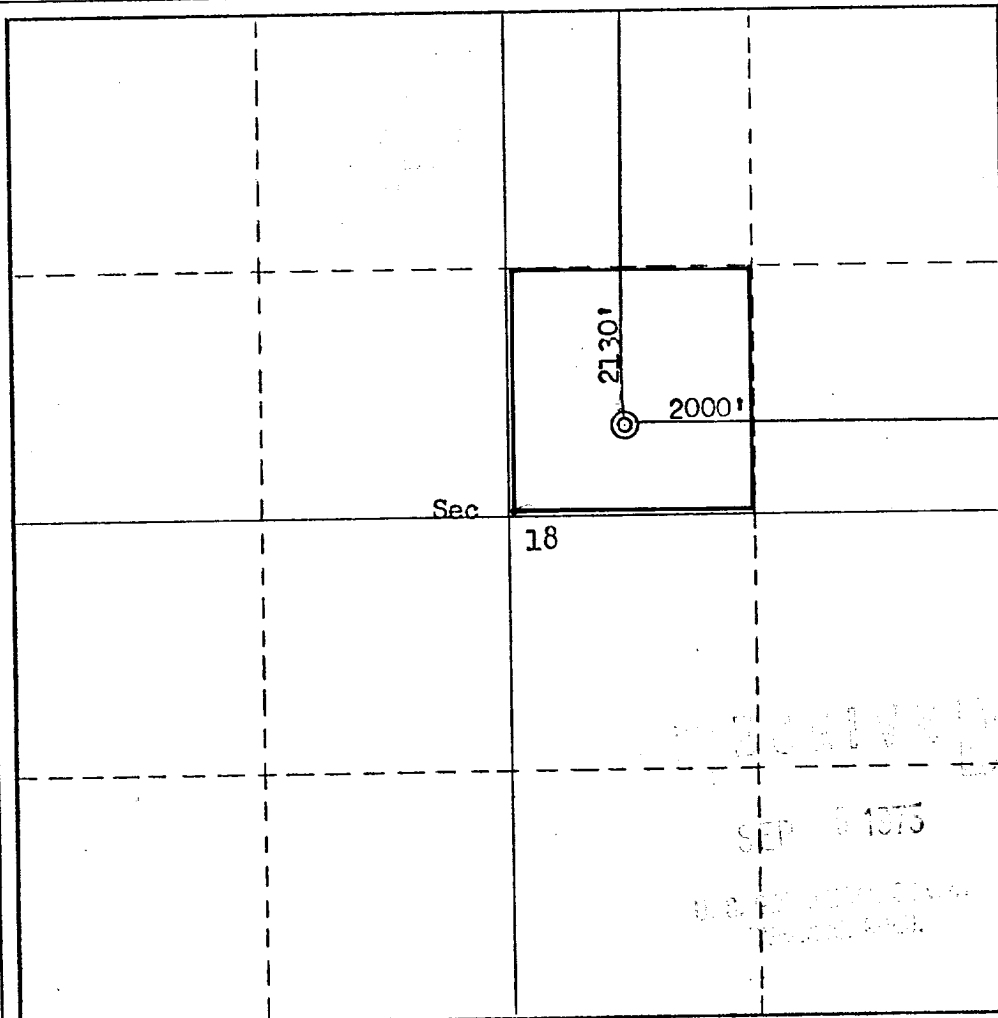
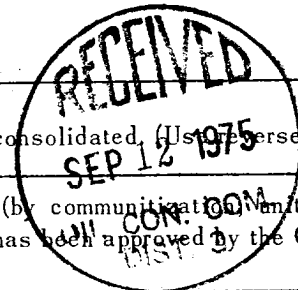
Operator <b>Filon Exploration</b>			Lease <b>Federal 18</b>		Well No. <b>1</b>
Unit Letter <b>G</b>	Section <b>18</b>	Township <b>20N</b>	Range <b>2W</b>	County <b>Sandoval</b>	
Actual Footage Location of Well: <b>2130</b> feet from the <b>North</b> line and <b>2000</b> feet from the <b>East</b> line					
Ground Level Elev. <b>6933</b>	Producing Formation <b>Entrada</b>		Pool <b>Wildcat</b>		Dedicated Acreage: <b>40</b> Acres

1. Outline the acreage dedicated to the subject well by colored pencil or hachure marks on the plat below.
2. If more than one lease is dedicated to the well, outline each and identify the ownership thereof (both as to working interest and royalty).
3. If more than one lease of different ownership is dedicated to the well, have the interests of all owners been consolidated by communitization, unitization, force-pooling, etc?

☐ Yes ☐ No If answer is "yes," type of consolidation \_\_\_\_\_

If answer is "no," list the owners and tract descriptions which have actually been consolidated (Use reverse side of this form if necessary.) \_\_\_\_\_

No allowable will be assigned to the well until all interests have been consolidated (by communitization, forced-pooling, or otherwise) or until a non-standard unit, eliminating such interests, has been approved by the Commission.



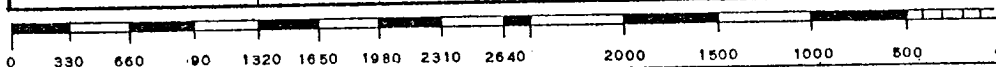
CERTIFICATION

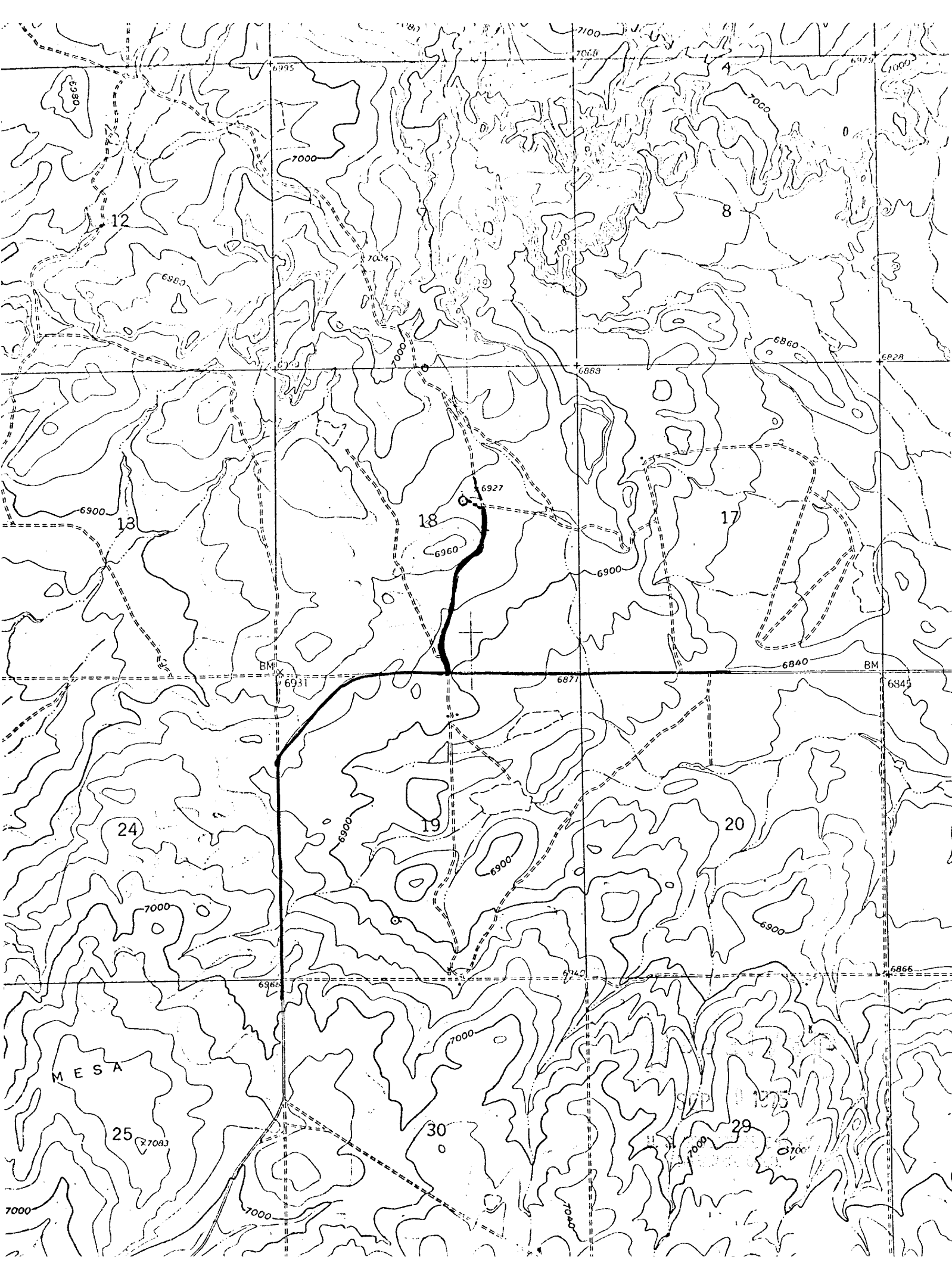
I hereby certify that the information contained herein is true and complete to the best of my knowledge and belief.

Name J. Arnold Inell  
Position \_\_\_\_\_  
Area Manager  
Company \_\_\_\_\_  
Minerals Management Inc.  
Date  
Sept. 8, 1975

I hereby certify that the well location shown on this plat was plotted from field notes of actual surveys made by me or under my supervision, and that the same is true and correct to the best of my knowledge and belief.

Date Surveyed  
September 5, 1975  
Registered Professional Engineer and/or Land Surveyor  
Fred B. Kerr Jr.  
Certificate No.  
3950





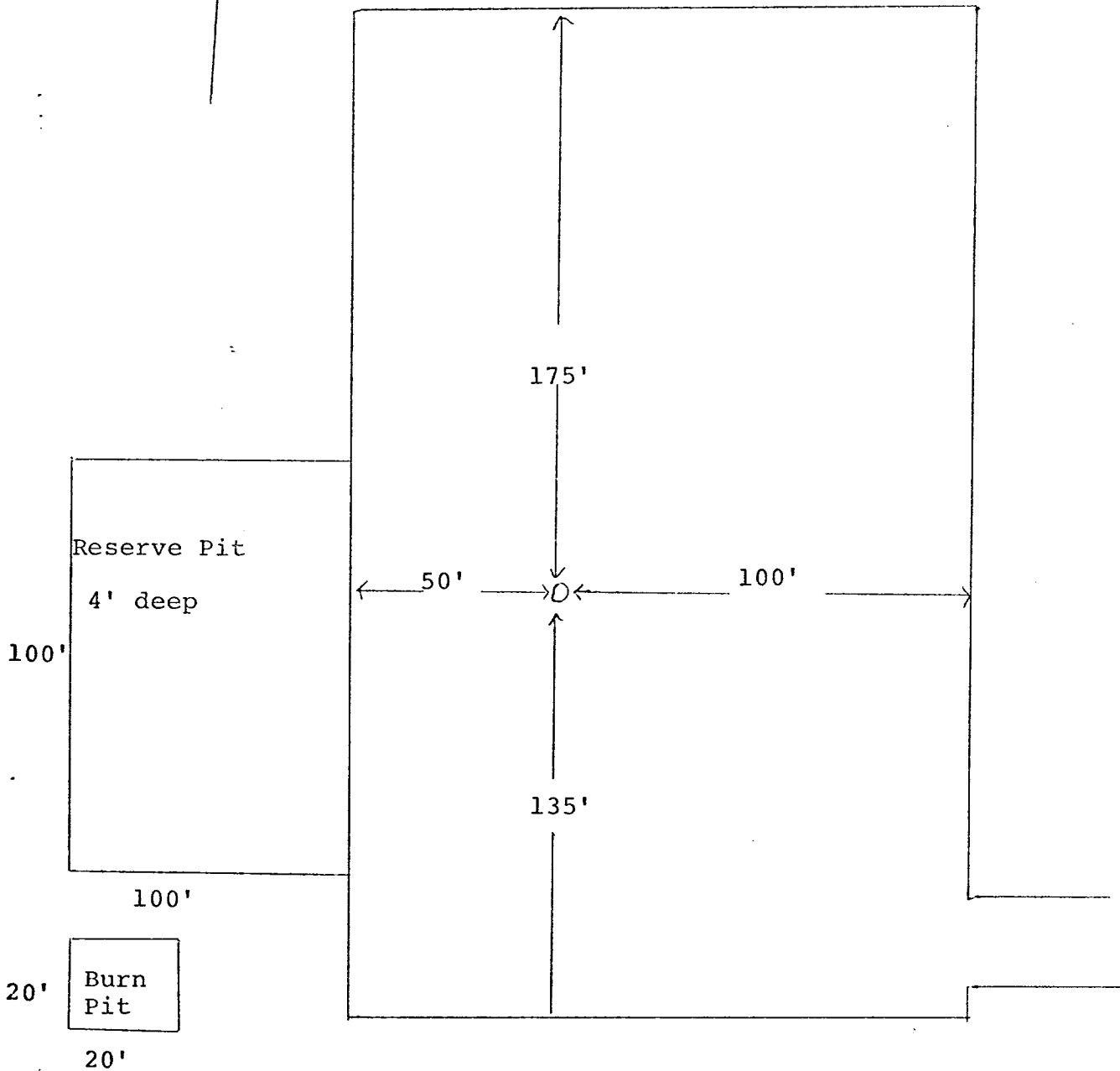
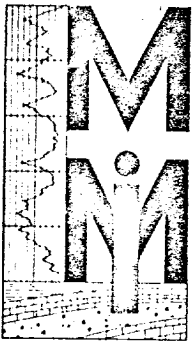


DIAGRAM OF WELL LOCATION

RECEIVED

SEP 8 1975

U. S. GEOLOGICAL SURVEY  
WASHINGTON, D. C.



MINERALS  
MANAGEMENT INC.

SUITE 210, PETROLEUM CENTER BLDG.  
501 AIRPORT DRIVE  
TELEPHONE (505) 327-4441  
FARMINGTON, NEW MEXICO 87401

DEVELOPMENT PLAN FOR SURFACE USE

FILON EXPLORATION CORPORATION

FEDERAL 18 WELL NO. 1

2130' FNL, 2000' FEL, SEC. 18, T20N, R2W

SANDOVAL COUNTY, NEW MEXICO

1. Existing Roads

1. The main road in the area, New Mexico State Highway 197, passes approximately 1/2 mile south of the wellsite.

2. Planned Access Road

The trail shown on the attached topographic map (approximately 1/2 mile) will be improved. A cattleguard will be placed at the highway.

3. Location of Existing Wells

None.

4. Lateral Roads

None

5. Location of Tank Batteries and Flowlines

Will be initially located on the drill pad approximately 150 feet from the well if production is encountered.

6. Water Supply

Water will be hauled to the well site from a water hole located in the Northeast quarter Section 19, T20N, R2W approximately one mile South of the proposed location.

RECEIVED  
SEP 11 1975

SEP 8 1975

RECEIVED  
SEP 11 1975

7. Method of Handling Waste Disposal

Waste will be buried in the reserve pit on completion of the well. The reserve pit will be backfilled. Toilet facilities will be provided.

8. Location of Camp

No camp will be used.

9. Location of Airstrip

None

10. Diagram of Well Location

See attached diagram

11. Plans for Restoration of Surface

The surface will be restored as directed by the Bureau of Land Management.

12. Impact on the Environment

Impact on the environment will be minimal. The access road and well location is sparsely vegetated and minimum trees and sage will be disturbed.