

UNITED STATES
DEPARTMENT OF THE INTERIOR
GEOLOGICAL SURVEY

APPLICATION FOR PERMIT TO DRILL, DEEPEN, OR PLUG BACK

1a. TYPE OF WORK

DRILL ☒DEEPEN ☐PLUG BACK ☐

b. TYPE OF WELL

OIL
WELL ☐GAS
WELL ☒

OTHER

SINGLE
ZONE ☐MULTIPLE
ZONE ☐

2. NAME OF OPERATOR

Chace Oil Company, Inc.

3. ADDRESS OF OPERATOR

313 Washington, S.E., Albuquerque, N.M. 87108

4. LOCATION OF WELL (Report location clearly and in accordance with any State requirements.)*

At surface

Unit "M" 800' SL & 800' WL

At proposed prod. zone

Same

14. DISTANCE IN MILES AND DIRECTION FROM NEAREST TOWN OR POST OFFICE*

8½ Miles S.E. of Lybrook, N.M.

15. DISTANCE FROM PROPOSED*

LOCATION TO NEAREST
PROPERTY OR LEASE LINE, FT.
(Also to nearest drilg. unit line, if any)

800'

16. NO. OF ACRES IN LEASE

1100

17. NO. OF ACRES ASSIGNED
TO THIS WELL

160

18. DISTANCE FROM PROPOSED LOCATION*
TO NEAREST WELL, DRILLING COMPLETED,
OR APPLIED FOR, ON THIS LEASE, FT.

1600'

19. PROPOSED DEPTH

2000'

20. ROTARY OR CABLE TOOLS

Rotary

21. ELEVATIONS (Show whether DF, RT, GR, etc.)

6904' GR

22. APPROX. DATE WORK WILL START*

Oct. 5, 1975

23.

PROPOSED CASING AND CEMENTING PROGRAM

SIZE OF HOLE	SIZE OF CASING	WEIGHT PER FOOT	SETTING DEPTH	QUANTITY OF CEMENT
12½	8-5/8"	22#	2000	80 sxs

Set 8-5/8" surface pipe to 100' and circulate cement - Drill to 2000' with low water loss mud - Log with Induction and Density logs. Set pipe (4½" csg.) to 2000'. Cement to surface with 400 sxs lite and 50-50 posmix. Perforate pay zone (La Ventana) and Frac.

IN ABOVE SPACE DESCRIBE PROPOSED PROGRAM: If proposal is to deepen or plug back, give data on present productive zone and proposed new productive zone. If proposal is to drill or deepen directionally, give pertinent data on subsurface locations and measured and true vertical depths. Give blowout preventer program, if any.

24.

SIGNED

Rayce McCary

TITLE

President

DATE

9-29-75

(This space for Federal or State office use)

PERMIT NO.

APPROVAL DATE

APPROVED BY

TITLE

DATE

CONDITIONS OF APPROVAL, IF ANY:

*Okap**24*

*See Instructions On Reverse Side

**NEW MEXICO OIL CONSERVATION COMMISSION
WELL LOCATION AND ACREAGE DEDICATION PLAT**

Form C-102
Supersedes C-128
Effective 1-1-65

All distances must be from the outer boundaries of the Section.

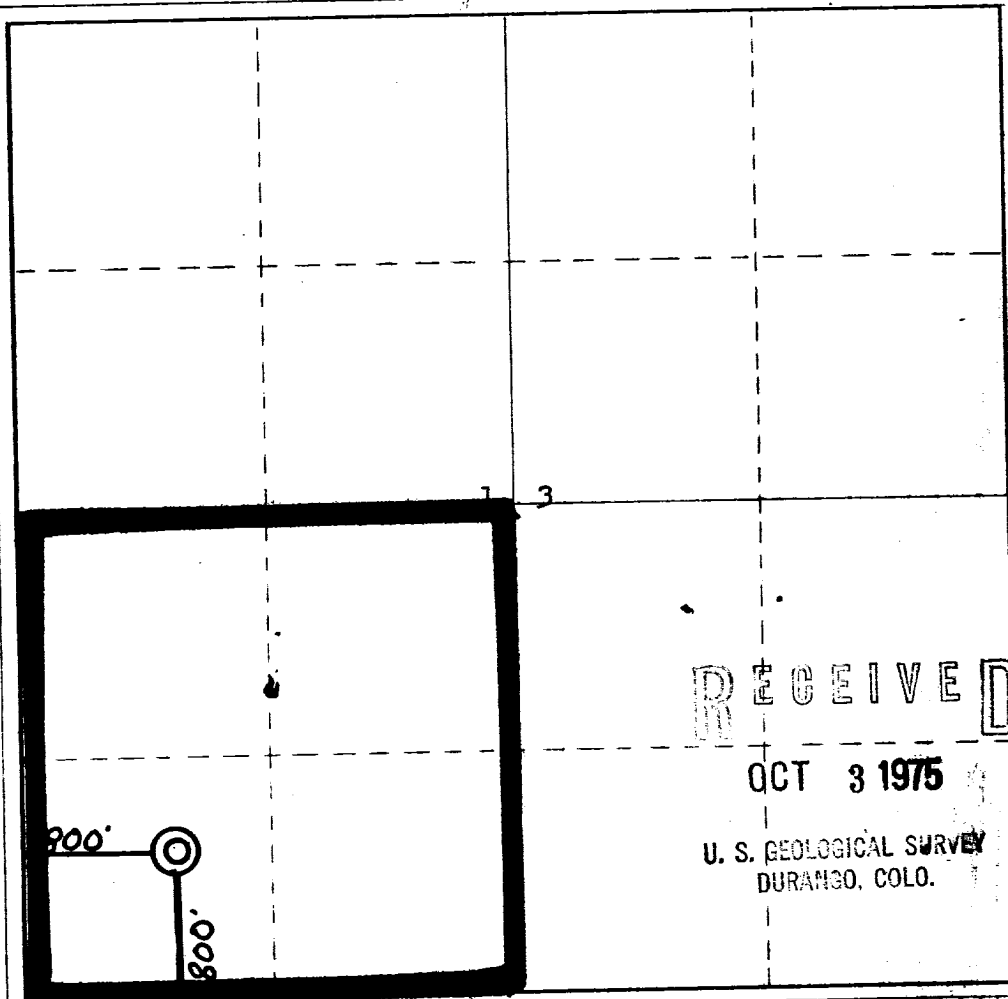
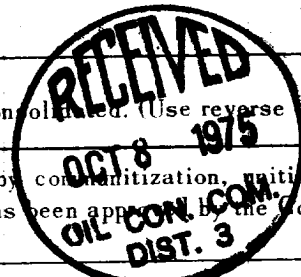
Operator CHACE OIL COMPANY			Lease <i>Rusty Federal</i> NM-0554493		Well No. 4
Unit Letter M	Section 13	Township 22 NORTH	Range 7 WEST	County SANDOVAL	
Actual Postage Location of Well: <div style="display: flex; justify-content: space-between;"> 800 feet from the SOUTH line and 800 feet from the WEST line </div>					
Ground Level Elev. 6904	Producing Formation La Ventana	Pool Rusty Menefee EXT	Dedicated Acreage: 160 Acres.		

1. Outline the acreage dedicated to the subject well by colored pencil or hachure marks on the plat below.
2. If more than one lease is dedicated to the well, outline each and identify the ownership thereof (both as to working interest and royalty).
3. If more than one lease of different ownership is dedicated to the well, have the interests of all owners been consolidated by communitization, unitization, force-pooling, etc?

☐ Yes ☐ No If answer is "yes," type of consolidation _____

If answer is "no," list the owners and tract descriptions which have actually been consolidated. (Use reverse side of this form if necessary.) _____

No allowable will be assigned to the well until all interests have been consolidated (by communitization, unitization, forced-pooling, or otherwise) or until a non-standard unit, eliminating such interests, has been approved by the Commission.



RECEIVED

OCT 3 1975

U. S. GEOLOGICAL SURVEY
DURANGO, COLO.

CERTIFICATION

I hereby certify that the information contained herein is true and complete to the best of my knowledge and belief.

Royce McCary
Name **Royce McCary**

Position **President**

Company **Chace Oil Co.**

Date **9-30-75**

I hereby certify that the well location shown on this plat was plotted from field notes of actual surveys made by me or under my supervision, and that the same is true and correct to the best of my knowledge and belief.

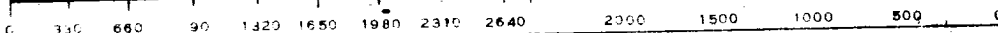
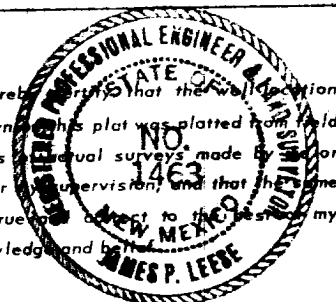
25 September, 1975

Date Surveyed

Registered Professional Engineer and/or Land Surveyor

James B. Lee

Certificate No. **1463**



DEVELOPMENT PLAN FOR SURFACE RESUME

Chace Oil Co. #4 Rusty Federal
800' SL & 800' WL Section 13
T-22-N, R-7-W

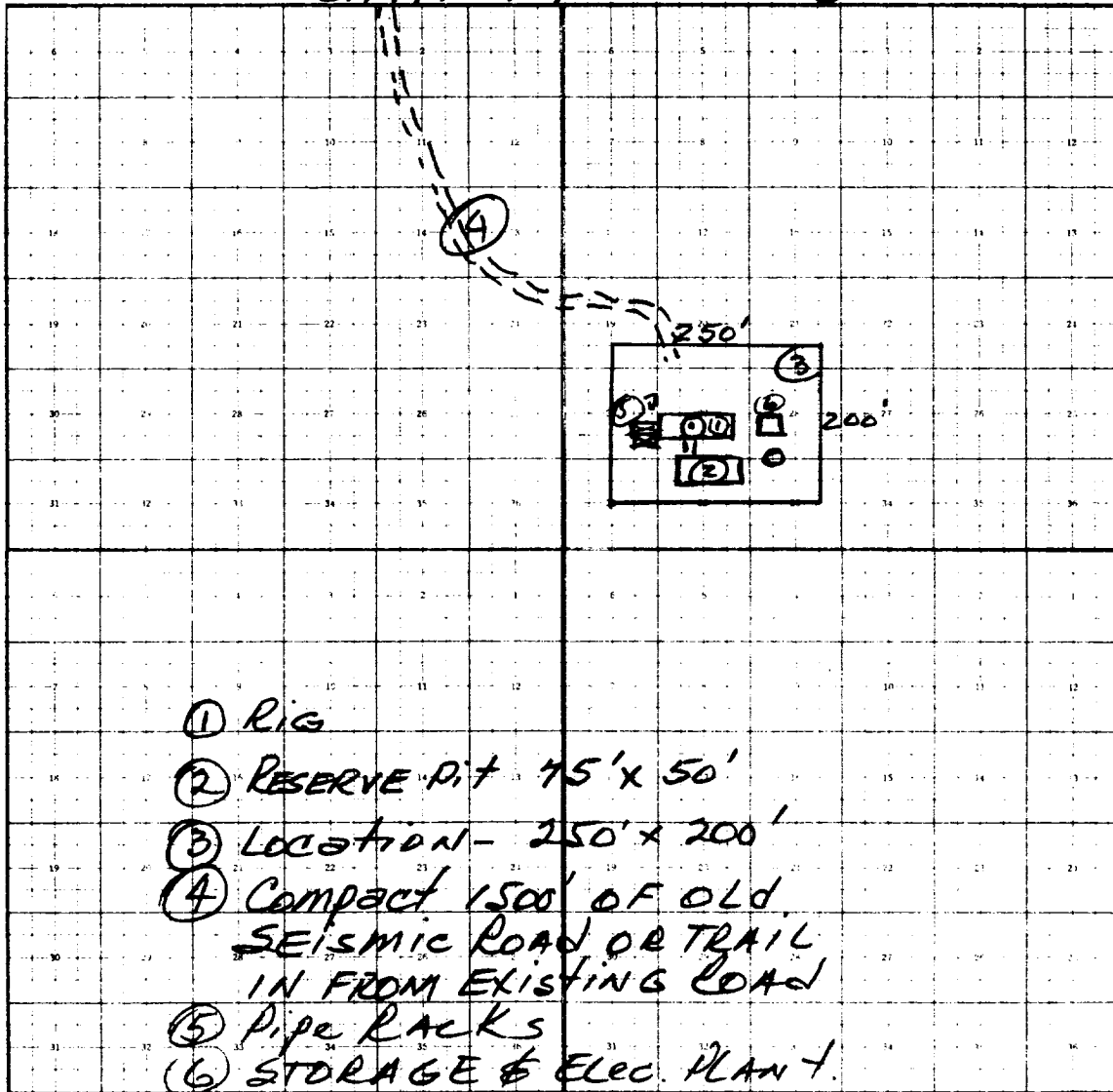
1. Location and vicinity map, San Juan Engineering Company Exit Hwy. 44 at Lybrook.
2. 1500' of old seismic road to be compacted to connect drill site with existing area roads - Road width to be 20'.
3. Well site is 1600' East of the Rusty Federal #3 in Unit P, Section 14, T-22-N, R-7-W.
4. Roads shown on vicinity plat and location plat.
5. In case of production (gas) well will be tied into a gathering line, but market has not been established. No tank batteries or separators are anticipated at this time.
6. Water to come from private source at Escrito Trading Post.
7. All trash and waste material will be placed in the mud pit and covered. No additional surface to be used, such as air strips or campsites.
8. None
9. None
10. Rig layout shown on township plat attached.
11. The topography is flat, covered with blow sand and sagebrush.
12. Drilling pad to be compacted.
13. After well completion, location to be restored to original condition less a few sagebrush, no other vegetation seems to grow at this location.
14. Field representative to contact is Royce McCary, Telephone 266-5562 at 313 Washington, S.E., Albuquerque, N.M. 87108.

OCT 8 1975

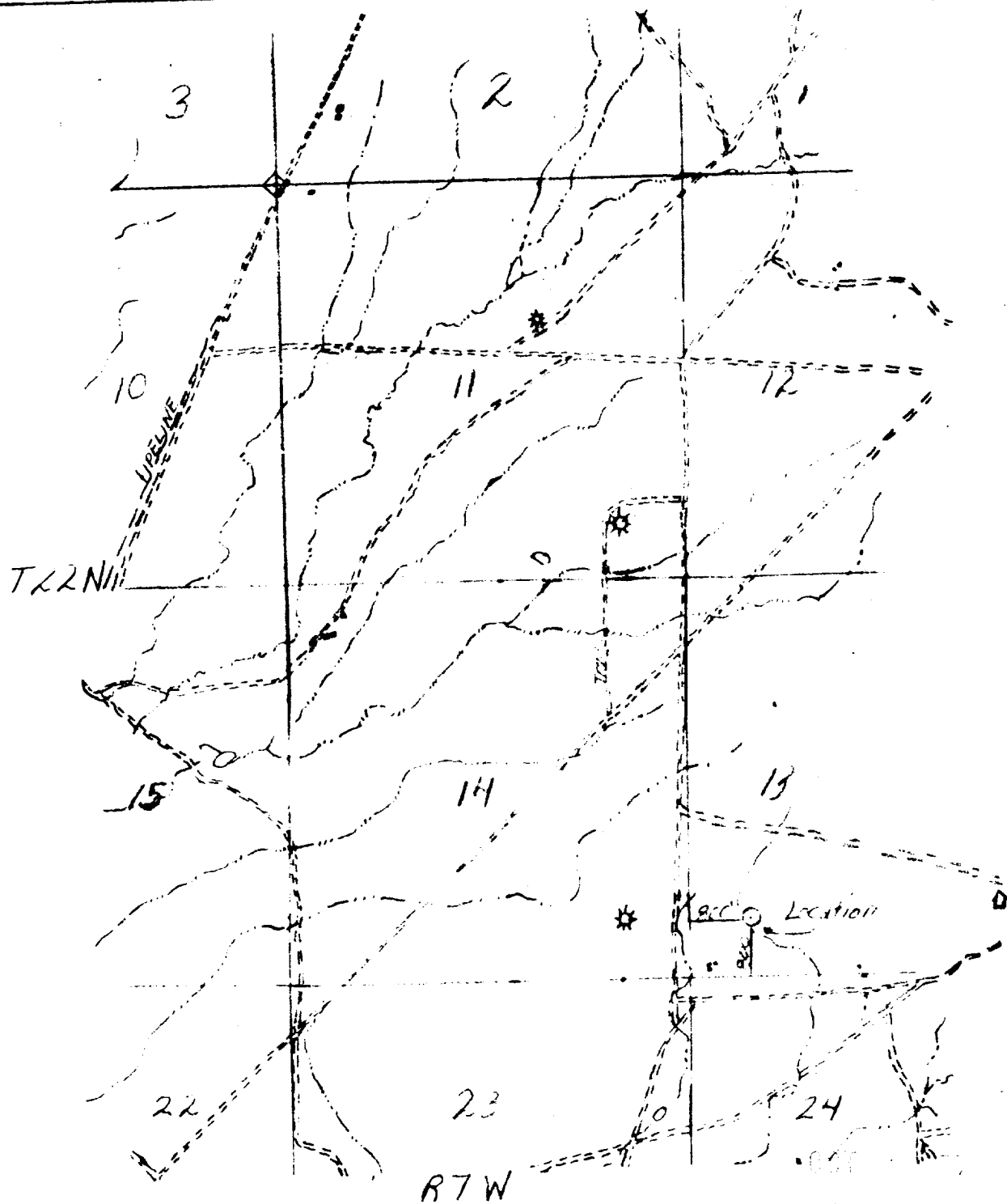
TOWNSHIP PLAT

Township 22N, Range 7W, County SANDOVAL, State NEW MEXICO

UNIT "M" SEC. 13



Scale 1" = 220' APPROX.



N

1"=2000'

Vicinity Map for

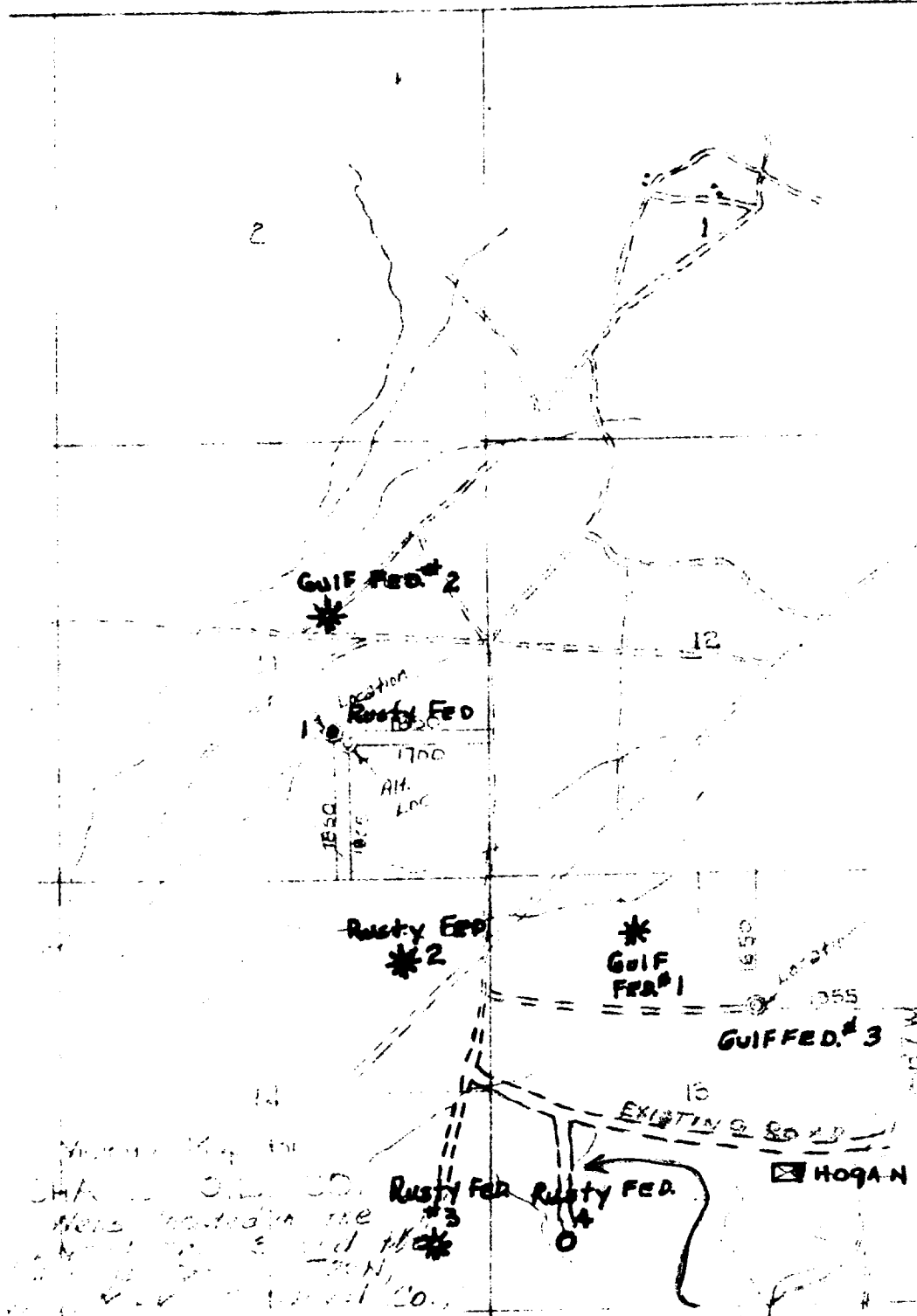
CHASE OIL COMPANY

Showing Well location in
the SW 1/4 SW 1/4 - Sec. 13,
N. M. P. M., San Juan County,
New Mexico.

Dated: 25 September, 1975 Scale: 1"=2000'

San Juan Engineering Company

T23N
T22N



YOUNG & RUBEN
CHARLES OIL CO.
Here located the
oil field and the
oil well. The oil
well is located in
the oil field.
The oil well is
located in the
oil field.

OLD SEISMIC ROAD
1500' TO BE USED