

UNITED STATES
DEPARTMENT OF THE INTERIOR
GEOLOGICAL SURVEY

APPLICATION FOR PERMIT TO DRILL, DEEPEN, OR PLUG BACK

1a. TYPE OF WORK

DRILL ☒DEEPEN ☐PLUG BACK ☐

b. TYPE OF WELL

OIL
WELL ☐GAS
WELL ☒

OTHER

SINGLE
ZONE ☐MULTIPLE
ZONE ☐

2. NAME OF OPERATOR

CHACE OIL COMPANY, INC.

3. ADDRESS OF OPERATOR

313 Washington S.E. Albuquerque, New Mexico 87108

4. LOCATION OF WELL (Report location clearly and in accordance with any State requirements.)

At surface

Unit K 1650' SL & 1800' WL

At proposed prod. zone

SAME

14. DISTANCE IN MILES AND DIRECTION FROM NEAREST TOWN OR POST OFFICE*

9 miles south of Lybrook, New Mexico

15. DISTANCE FROM PROPOSED*

LOCATION TO NEAREST
PROPERTY OR LEASE LINE, FT.
(Also to nearest drlg. unit line, if any)

840'

16. NO. OF ACRES IN LEASE

160

17. NO. OF ACRES ASSIGNED
TO THIS WELL

160

18. DISTANCE FROM PROPOSED LOCATION*
TO NEAREST WELL, DRILLING COMPLETED,
OR APPLIED FOR, ON THIS LEASE, FT.

2790'

19. PROPOSED DEPTH

1900'

20. ROTARY OR CABLE TOOLS

ROTARY

21. ELEVATIONS (Show whether DF, RT, GR, etc.)

6774' GR

22. APPROX. DATE WORK WILL START*

JUNE 6, 1976

23.

PROPOSED CASING AND CEMENTING PROGRAM

SIZE OF HOLE	SIZE OF CASING	WEIGHT PER FOOT	SETTING DEPTH	QUANTITY OF CEMENT
13½"	8 5/8"	24	96'	100 sxs

Drill 100' 13½" hole - set 96' 8 5/8" surface pipe cement to surface. Drill 7 7/8" hole to 1900' using 9# mud 35-40 vis. Raise vis. to 55-60 for logging. Run 1860' 4½" csg. Cement to surface with 460 sxs Halliburton lite & 50-50 posmix. Perforate and complete as gas well.



IN ABOVE SPACE DESCRIBE PROPOSED PROGRAM: If proposal is to deepen or plug back, give data on present productive zone and proposed new productive zone. If proposal is to drill or deepen directionally, give pertinent data on subsurface locations and measured and true vertical depths. Give blowout preventer program, if any.

24.

SIGNED

(This space for Federal or State office use)

TITLE

President

DATE 5-5-76

PERMIT NO.

APPROVAL DATE

APPROVED BY

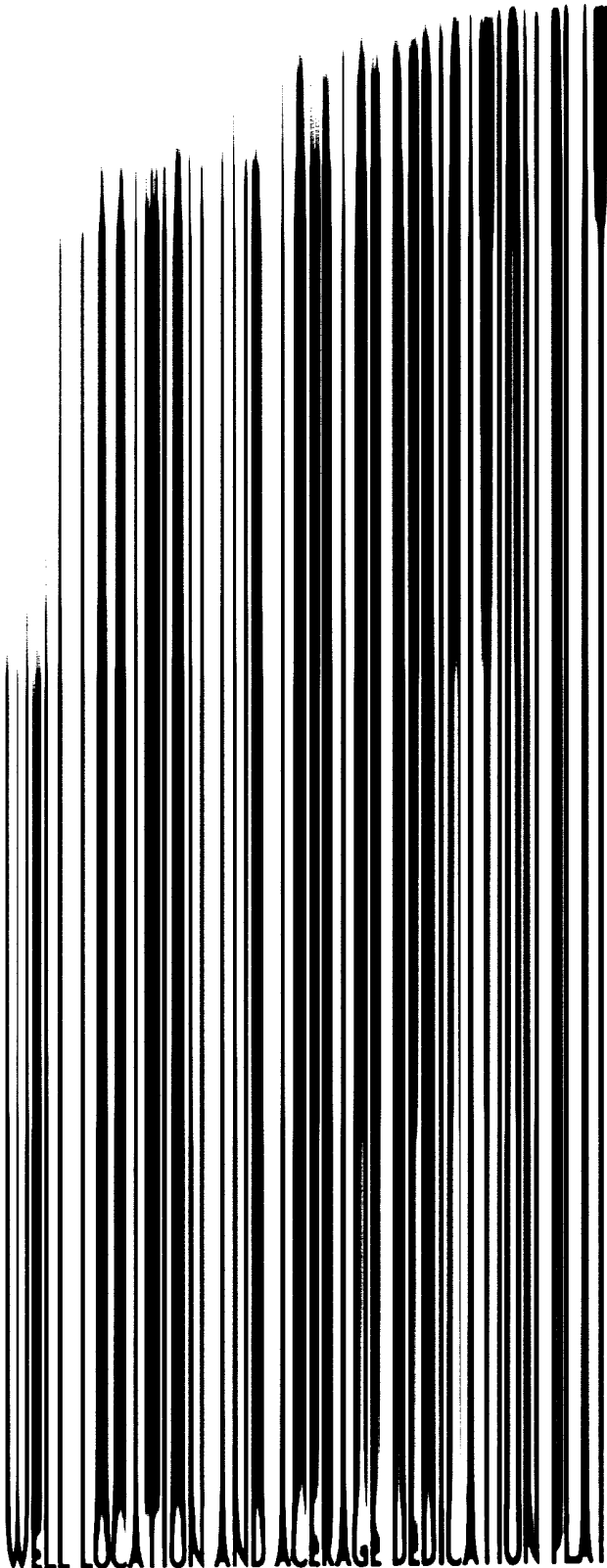
TITLE

DATE

CONDITIONS OF APPROVAL, IF ANY:

*See Instructions On Reverse Side

NEW MEXICO OIL CONSERVATION COMMISSION



All distances must be from the outer boundaries of the Section

Operator CHACE OIL COMPANY		Lease RUSTY NAVAJO		Well No. #3
Unit Letter K	Section 23	Township 22 NORTH	Range 7 WEST	County SANDOVAL
Actual Footage Location of Well: 1650 feet from the SOUTH line and 1800 feet from the WEST line				
Ground Level Elev. 6774	Producing Formation Chacra	Pool Undesignated	Dedicated Acreage: 160 Acres	

1. Outline the acreage dedicated to the subject well by colored pencil or hachure marks on the plat below.
2. If more than one lease is dedicated to the well, outline each and identify the ownership thereof (both as to working interest and royalty),
3. If more than one lease of different ownership is dedicated to the well, have the interests of all owners been consolidated by communization, unitization, force-pooling, etc?
- () Yes () No If answer is "yes," type of consolidation

If answer is "no," list the owners and tract descriptions which have actually consolidated. (Use reverse side of this form if necessary.)

No allowable will be assigned to the well until all interests have been consolidated (by communization, unitization, forced-pooling, or otherwise) or until a non standard unit, eliminating such interests, has been approved by the Commission.

NEW MEXICO OIL CONSERVATION COMMISSION

WELL LOCATION AND ACERAGE DEDICATION PLAT

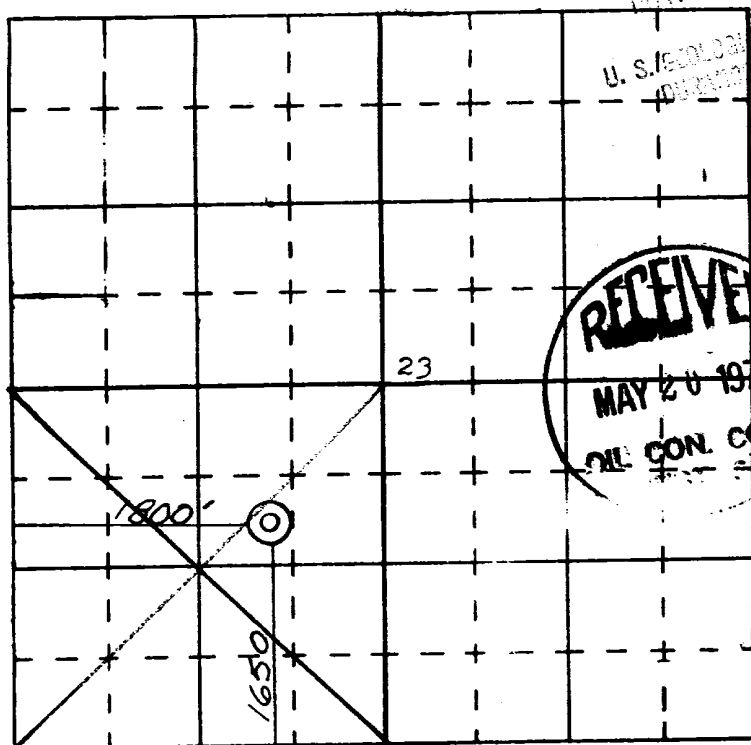
All distances must be from the outer boundaries of the Section

Operator CHACE OIL COMPANY			Lease RUSTY NAVAJO		Well No. #3
Unit Letter K	Section 23	Township 22 NORTH	Range 7 WEST	County SANDOVAL	
Actual Footage Location of Well: <div style="display: flex; justify-content: space-between;"> 1650 feet from the SOUTH line and 1800 feet from the WEST line </div>					
Ground Level Elev. 6774	Producing Formation Chacra		Pool Undesignated	Dedicated Acreage: 160 Acres	

1. Outline the acreage dedicated to the subject well by colored pencil or hachure marks on the plat below.
2. If more than one lease is dedicated to the well, outline each and identify the ownership thereof (both as to working interest and royalty),
3. If more than one lease of different ownership is dedicated to the well, have the interests of all owners been consolidated by communitization, unitization, force-pooling, etc?
☐ Yes ☐ No If answer is "yes," type of consolidation _____

If answer is "no," list the owners and tract descriptions which have actually consolidated. (Use reverse side of this form if necessary.) _____

No allowable will be assigned to the well until all interests have been consolidated (by communitization, unitization, forced-pooling, or otherwise) or until a non standard unit, eliminating such interests, has been approved by the Commission.



CERTIFICATION

I hereby certify that the information contained herein is true and complete to the best of my knowledge and belief.

Royce McCary
 Name
Royce McCary
 Position
President
 Company
Chace Oil Company
 Date
May 5, 1976

I hereby certify that the well location shown on this plat was plotted from field notes of actual surveys made by me or under my supervision, and that the same are true and correct to the best of my knowledge and belief.

James P. Leese
 Date Surveyed
30 May 1976
 Registered Professional Engineer
 and/or Land Surveyor **James P. Leese**

1463

Certificate No.

2

N
15
SCALE 1"=2000'

14

13

22

23

24

Loc.

1800'

1450'

Alem Itz

JEEP

TRAIL

Cañada

27

26

25

RECEIVED

MAY 20 1976

OIL CON. COM.
DIST 3

VICINITY MAP FOR

CHACE OIL COMPANY

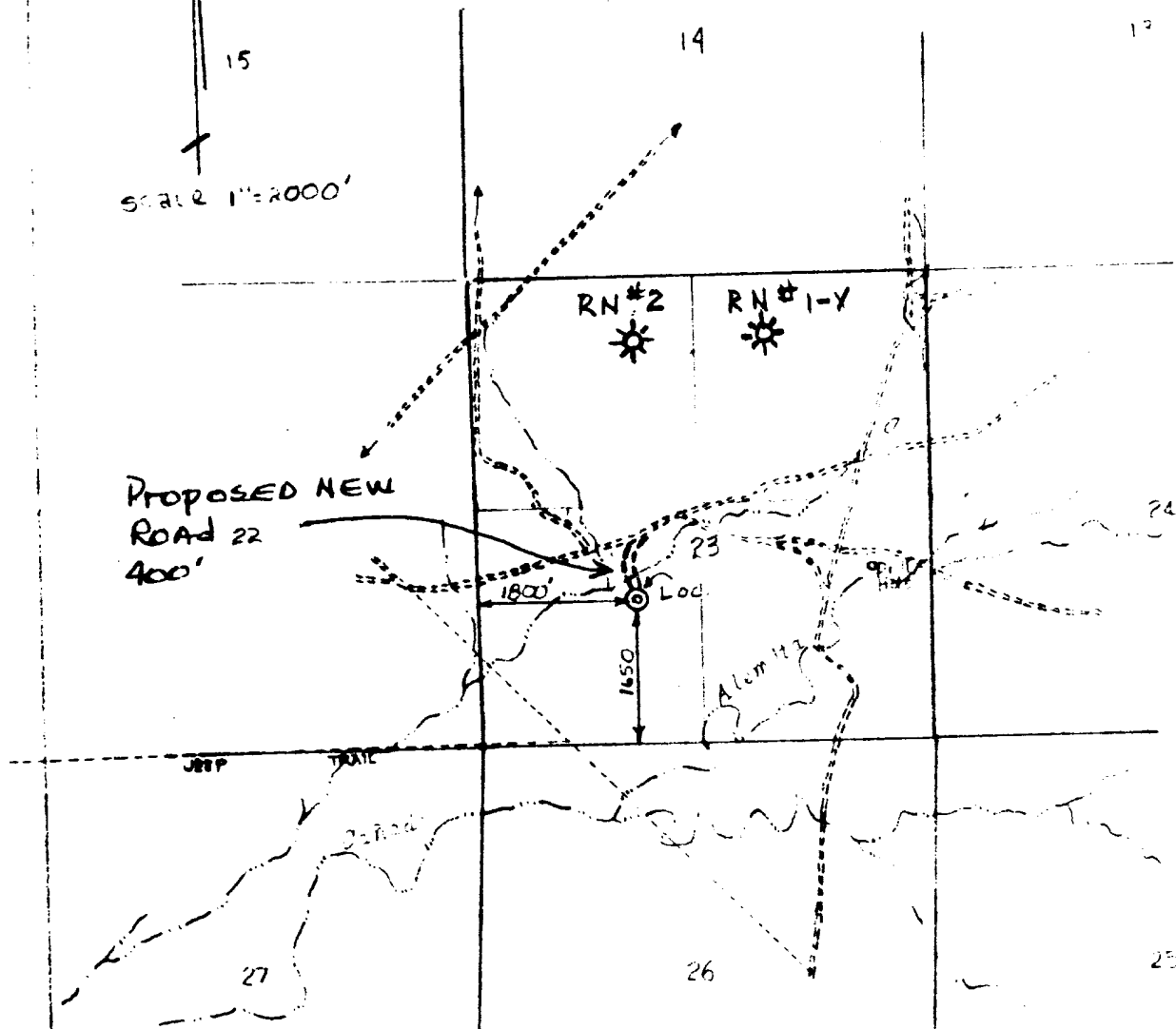
SHOWING WELL LOCATION IN THE
SW/4 OF SECTION 23, T22 N,
R7W, N.M.P.M., SAN JUAN COUNTY,
NEW MEXICO

SCALE 1"=24000 DATE: 3 MAY 1976

SAN JUAN ENGINEERING CO.
FARMINGTON, NEW MEXICO

11 copies

N
15
SCALE 1"=2000'

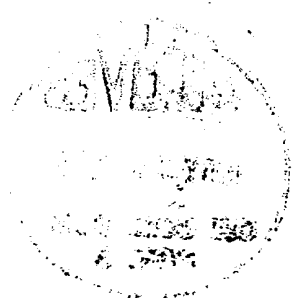


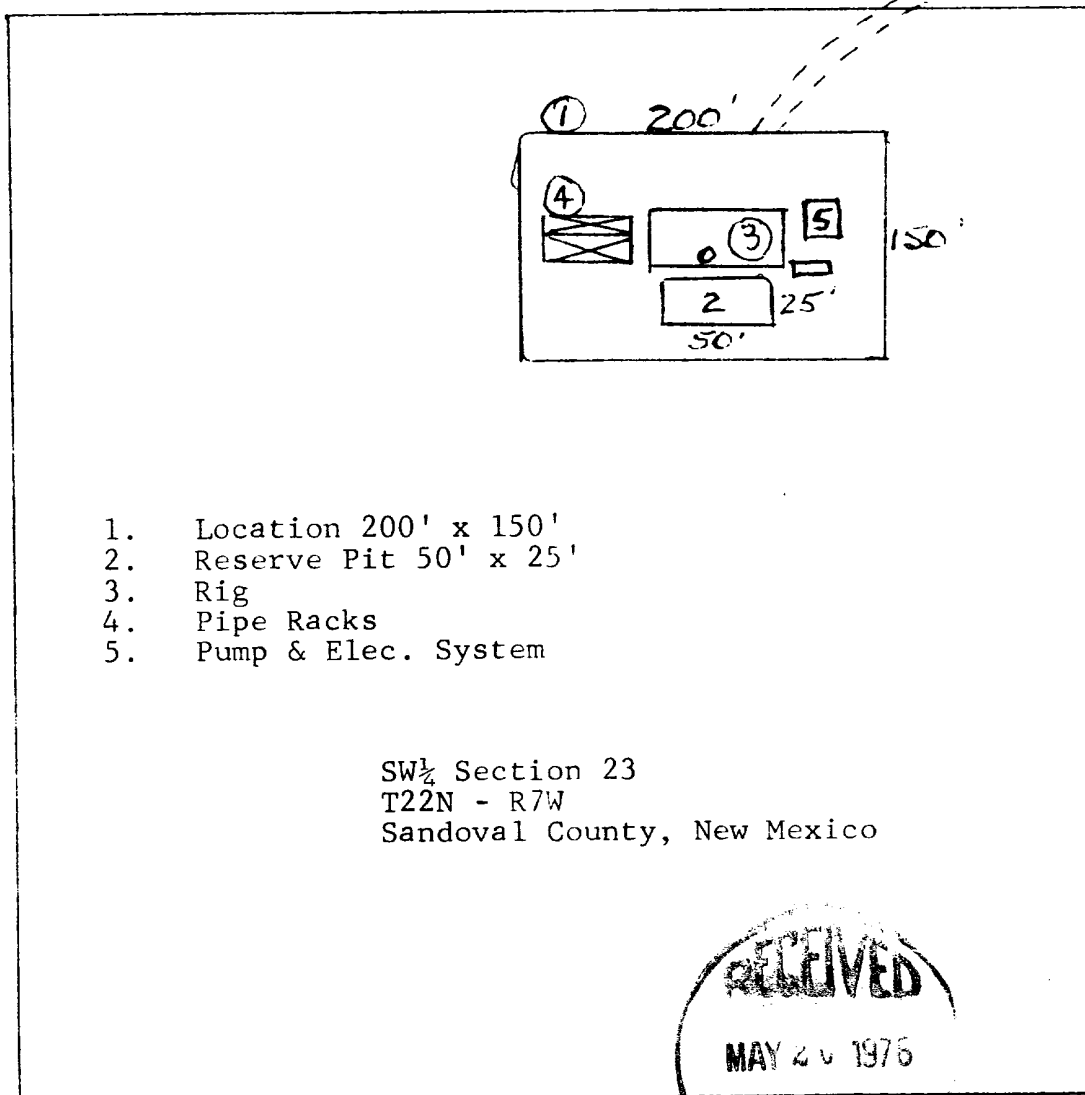
RECEIVED
MAY 20 1976
OIL CON
DIST

VICINITY MAP FOR
CHACE OIL COMPANY
SHOWING WELL LOCATION IN THE
SW 1/4 OF SECTION 23 T23N
R7W N 34M SAN JUAN COUNTY
NEW MEXICO

DATE OF MAP 3 MAY 1976

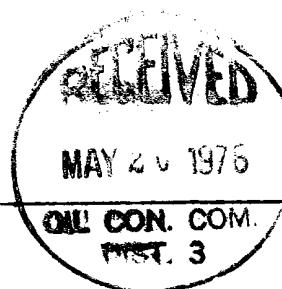
SAN JUAN ENGINEERING CO.
FARMINGTON, N.M.





1. Location 200' x 150'
2. Reserve Pit 50' x 25'
3. Rig
4. Pipe Racks
5. Pump & Elec. System

SW $\frac{1}{4}$ Section 23
T22N - R7W
Sandoval County, New Mexico



DEVELOPMENT PLAN FOR SURFACE RESUME

Chace Oil Company # 3 Rusty Navajo
Unit K 1650' SL & 1800' WL Sec. 23
T22N - R7W Sandoval County, New Mexico

1. Location and vicinity map, San Juan Engineering Company Exit Hgy 44 at Lybrook
2. 400' of new road with culvert to be compacted to connect drill site with existing area roads. New road to be 20' in width.
3. Well site is approximately 2800' SW of the Rusty Navajo # 2 in unit C, Section 23, T22N - R7W.
4. Roads shown on vicinity plat and location plat.
5. In case of production (gas) well will be tied into a gathering line, but market has not been established. No tank batteries or separators are anticipated at this time.
6. Water to come from private source at Escrito Trading Post.
7. All trash and waste material will be placed in the mud pit and covered. No additional surface to be used, such as air strips or campsites.
8. None
9. None
10. Rig layout shown on township plat attached.
11. The topography is flat, covered with sagebrush, sand, broom snakeweed.
12. Drilling pad to be completed.
13. After well completion, location to be restored to original condition less a few sagebrush, and sodded with required seeds.
14. Field representative to contact is Royce McCary, telephone 266-5562 at 313 Washington S.E., Albuquerque, N.Mex. 87108.



