

UNITED STATES  
DEPARTMENT OF THE INTERIOR

GEOLOGICAL SURVEY *APL 30-049-20231*

APPLICATION FOR PERMIT TO DRILL, DEEPEN, OR PLUG BACK

1a. TYPE OF WORK

DRILL ☒

DEEPEN ☐

PLUG BACK ☐

b. TYPE OF WELL

OIL  
WELL ☐

GAS  
WELL ☒

OTHER

SINGLE  
ZONE ☒

MULTIPLE  
ZONE ☐

2. NAME OF OPERATOR

Jack A. Cole

3. ADDRESS OF OPERATOR

P. O. Box 191, Farmington, New Mexico 87401

4. LOCATION OF WELL (Report location clearly and in accordance with any State requirements.)\*

At surface

790/N and 1850/E Sec. 33-T23N-R4W

At proposed prod. zone

Same

14. DISTANCE IN MILES AND DIRECTION FROM NEAREST TOWN OR POST OFFICE\*

70 Miles Southeast Bloomfield, New Mexico

15. DISTANCE FROM PROPOSED\*

LOCATION TO NEAREST  
PROPERTY OR LEASE LINE, FT.  
(Also to nearest drlg. unit line, if any)

18. DISTANCE FROM PROPOSED LOCATION\*  
TO NEAREST WELL, DRILLING, COMPLETED,  
OR APPLIED FOR, ON THIS LEASE, FT.

2600'

16. NO. OF ACRES IN LEASE

1920

19. PROPOSED DEPTH

2800

17. NO. OF ACRES ASSIGNED  
TO THIS WELL

160

20. ROTARY OR CABLE TOOLS

Rotary

21. ELEVATIONS (Show whether DF, RT, GR, etc.)

6989 GR 6999 DF

22. APPROX. DATE WORK WILL START\*

June 29, 1976

23.

PROPOSED CASING AND CEMENTING PROGRAM

SIZE OF HOLE	SIZE OF CASING	WEIGHT PER FOOT	SETTING DEPTH	QUANTITY OF CEMENT
12 1/4	8 5/8	24.0	120'	Circulate
7 7/8	4 1/2	10.5	2800	150 Sacks

Well will be mud drilled with rotary tools after setting and cementing 8 5/8" surface casing. Run electric logs at total depth and set 4 1/2" casing if warranted, cementing same with 150 sacks. Sand-water frac. Treat down casing through perforations opposite Pictured Cliffs sand. Run 1" tubing for production string to produce as a Pictured Cliffs natural gas well.

*Gas not dedicated*

IN ABOVE SPACE DESCRIBE PROPOSED PROGRAM. If proposal is to deepen or plug back, give data on present productive zone and proposed new productive zone. If proposal is to drill or deepen directionally, give pertinent data on subsurface locations and measured and true vertical depths. Give blowout preventer program, if any.

24.

SIGNED

*Jack A. Cole*

TITLE Operator

DATE June 8, 1976

(This space for Federal or State office use)

PERMIT NO.

APPROVAL DATE

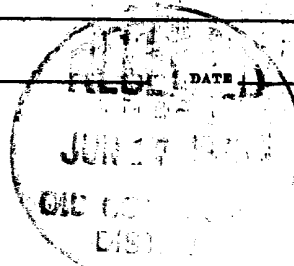
APPROVED BY

TITLE

CONDITIONS OF APPROVAL, IF ANY:

*elac*

\*See Instructions On Reverse Side



**NEW MEXICO OIL CONSERVATION COMMISSION  
WELL LOCATION AND ACREAGE DEDICATION PLAT**

Form C-102  
Supersedes C-128  
Effective 1-1-65

All distances must be from the outer boundaries of the Section.

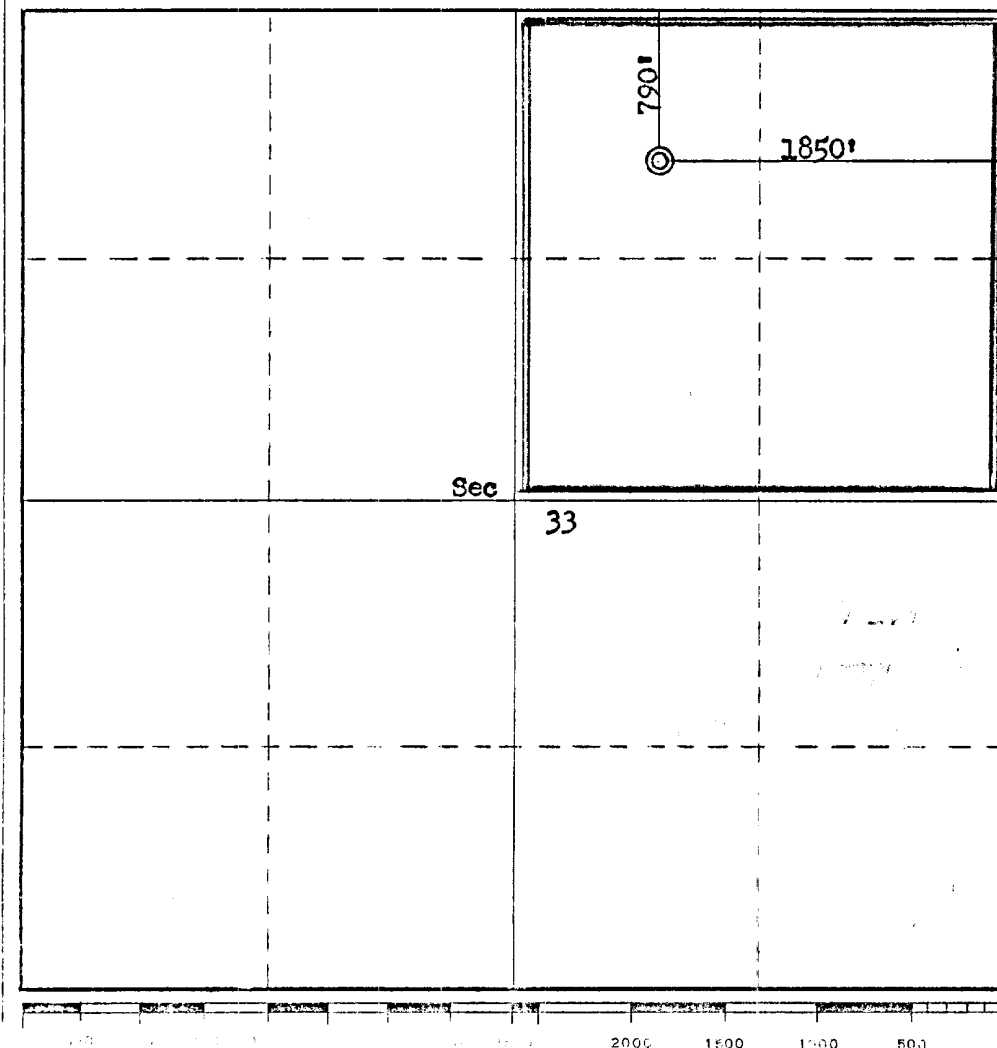
Operator <b>Jack A. Cole</b>			Lease <b>Apache Flats</b>		Well No. <b>9</b>
Unit Letter <b>B</b>	Section <b>33</b>	Township <b>23N</b>	Range <b>4W</b>	County <b>Sandoval</b>	
Actual Footage Location of Well:					
<b>790</b> feet from the <b>North</b> line and		<b>1850</b> feet from the <b>East</b> line			
Ground Level Elev. <b>6989 Gr</b>	Producing Formation <b>Pictured Cliffs</b>		Pool <b>Wildcat Undesignated</b>		Dedicated Acreage; <b>160</b> Acres

1. Outline the acreage dedicated to the subject well by colored pencil or hachure marks on the plat below.
2. If more than one lease is dedicated to the well, outline each and identify the ownership thereof (both as to working interest and royalty).
3. If more than one lease of different ownership is dedicated to the well, have the interests of all owners been consolidated by communitization, unitization, force-pooling, etc?

☐ Yes    ☐ No    If answer is "yes," type of consolidation \_\_\_\_\_

If answer is "no," list the owners and tract descriptions which have actually been consolidated. (Use reverse side of this form if necessary.) \_\_\_\_\_

No allowable will be assigned to the well until all interests have been consolidated (by communitization, unitization, forced-pooling, or otherwise) or until a non-standard unit, eliminating such interests, has been approved by the Commission.



**CERTIFICATION**

*I hereby certify that the information contained herein is true and complete to the best of my knowledge and belief.*

*Jack A. Cole*  
Name

**Jack A. Cole**

Position  
**Operator**

Company

Date  
**June 8, 1976**

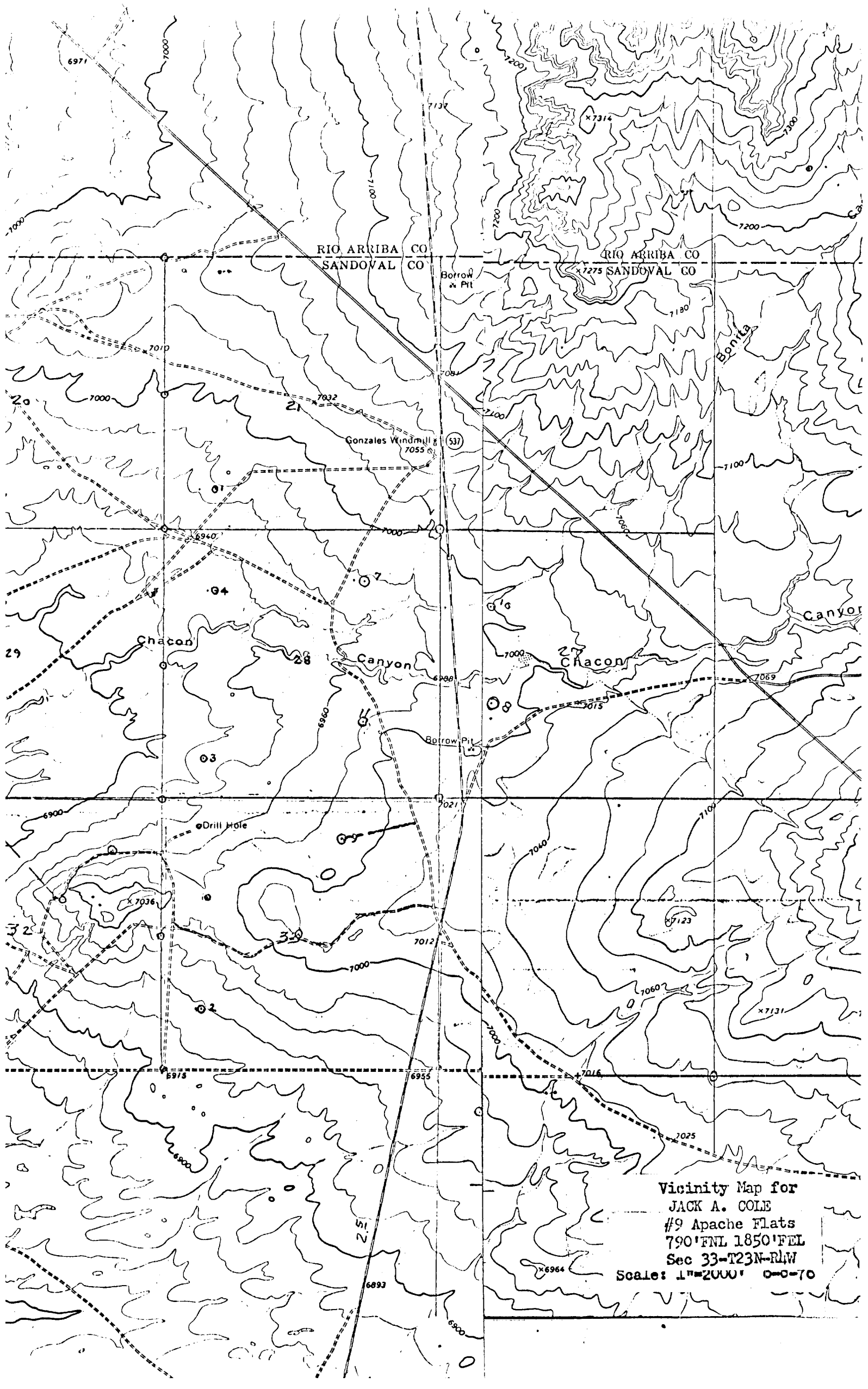
*I hereby certify that the well location shown on this plat was plotted from field notes of actual surveys made by me or under my supervision, and that the same is true and correct to the best of my knowledge and belief.*

Date Surveyed  
**June 8, 1976**

Registered Professional Engineer and/or Land Surveyor

*Fred B. Kerr*  
**Fred B. Kerr**

Certificate No.  
**3050**



Vicinity Map for  
JACK A. COLE  
#9 Apache Flats  
790'FNL 1850'FEL  
Sec 33-T23N-R1W  
Scale: 1"=2000' 0-0-70