

UNITED STATES
DEPARTMENT OF THE INTERIOR
GEOLOGICAL SURVEY

30-043-20-234

APPLICATION FOR PERMIT TO DRILL, DEEPEN, OR PLUG BACK

1a. TYPE OF WORK

DRILL ☒

DEEPEN ☐

PLUG BACK ☐

b. TYPE OF WELL

OIL WELL ☒

GAS WELL ☐

OTHER

SINGLE ZONE ☒

MULTIPLE ZONE ☐

2. NAME OF OPERATOR

Filon Exploration Corporation

3. ADDRESS OF OPERATOR

c/o Minerals Management, Inc.

501 Airport, Suite 105, Farmington, N.M. 87401

4. LOCATION OF WELL (Report location clearly and in accordance with any State requirements.)

At surface

660' FSL, 2310' FWL, SEC. 3, T21N, R6W

At proposed prod. zone

14. DISTANCE IN MILES AND DIRECTION FROM NEAREST TOWN OR POST OFFICE*

12 miles S/SW of Counselors Trading Post, N.M.

15. DISTANCE FROM PROPOSED*

LOCATION TO NEAREST PROPERTY OR LEASE LINE, FT.
(Also to nearest drlg. unit line, if any)

660'

16. NO. OF ACRES IN LEASE

520

17. NO. OF ACRES ASSIGNED TO THIS WELL

40

18. DISTANCE FROM PROPOSED LOCATION*

TO NEAREST WELL, DRILLING, COMPLETED, OR APPLIED FOR, ON THIS LEASE, FT.

-

19. PROPOSED DEPTH

6700'

20. ROTARY OR CABLE TOOLS

Rotary

21. ELEVATIONS (Show whether DF, RT, GR, etc.)

6891 GR

22. APPROX. DATE WORK WILL START*

August 25, 1976

23. PROPOSED CASING AND CEMENTING PROGRAM

SIZE OF HOLE	SIZE OF CASING	WEIGHT PER FOOT	SETTING DEPTH	QUANTITY OF CEMENT
15"	10 3/4"	40.50#	200'	200 SX
8 3/4"	7"	23-26#	6450'	500-700 SX
6 1/4"	4 1/4"	10.50#	6700'	50 SX

Operator proposes to drill a Jurassic test to 6700'. A low solids mud will be used to drill 8 3/4" hole. If casing is run, a liner will be set from TD with 150' overlap inside of 7" casing. A Series 900, 3000 psi WP BOP will be used. Completion data will be determined from logs.



IN ABOVE SPACE DESCRIBE PROPOSED PROGRAM: If proposal is to deepen or plug back, give data on present productive zone and proposed new productive zone. If proposal is to drill or deepen directionally, give pertinent data on subsurface locations and measured and true vertical depths. Give blowout preventer program, if any.

24.

SIGNED

J. Arnold Snell

Area Manager

TITLE Minerals Management Inc. DATE July 6, 1976

(This space for Federal or State office use)

PERMIT NO.

APPROVAL DATE

APPROVED BY

TITLE

DATE

CONDITIONS OF APPROVAL, IF ANY:

Obal

SK

*See Instructions On Reverse Side

NEW MEXICO OIL CONSERVATION COMMISSION
WELL LOCATION AND ACREAGE DEDICATION PLAT

Supersedes C-128
Effective 1-1-65

All distances must be from the outer boundaries of the Section.

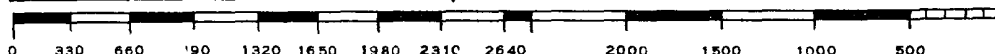
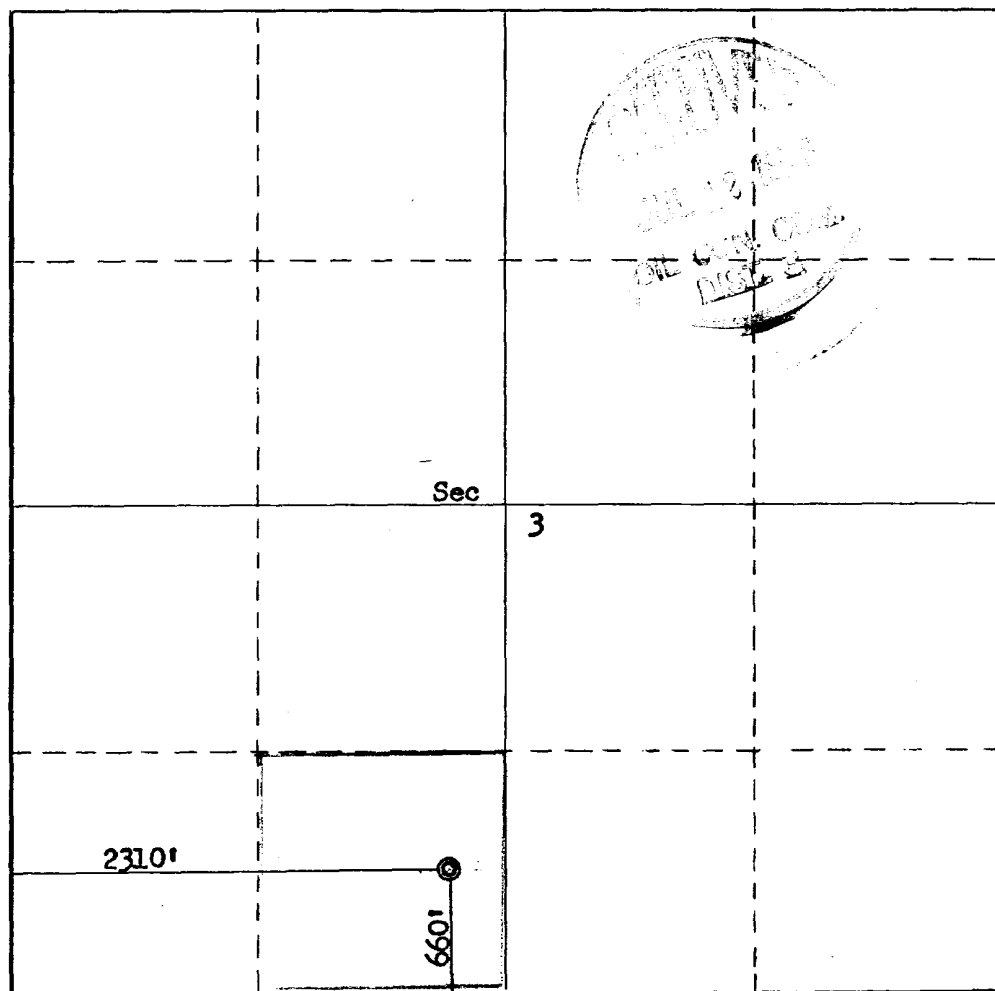
Operator Filon Exploration Company			Lease Federal 3		Well No. 1
Unit Letter N	Section 3	Township 21N	Range 6W	County Sandoval	
Actual Footage Location of Well:					
660		feet from the South	line and 2310	feet from the West	line
Ground Level Elev. 6891	Producing Formation Entrada	Pool Wildcat	Dedicated Acreage: 40 Acres		

1. Outline the acreage dedicated to the subject well by colored pencil or hachure marks on the plat below.
2. If more than one lease is dedicated to the well, outline each and identify the ownership thereof (both as to working interest and royalty).
3. If more than one lease of different ownership is dedicated to the well, have the interests of all owners been consolidated by communitization, unitization, force-pooling, etc?

☐ Yes ☐ No If answer is "yes," type of consolidation _____

If answer is "no," list the owners and tract descriptions which have actually been consolidated. (Use reverse side of this form if necessary.) _____

No allowable will be assigned to the well until all interests have been consolidated (by communitization, unitization, forced-pooling, or otherwise) or until a non-standard unit, eliminating such interests, has been approved by the Commission.



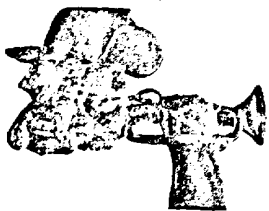
CERTIFICATION

I hereby certify that the information contained herein is true and complete to the best of my knowledge and belief.

Name
J. Arnold Inell
Position
Area Manager
Company
Minerals Management Inc.
Date
July 6, 1976

I hereby certify that the well location shown on this plat was plotted from field notes of actual surveys made by me or under my supervision, and that the same is true and correct to the best of my knowledge and belief.

Date Surveyed
June 30, 1976
Registered Professional Engineer
and/or Land Surveyor
Fred B. Kerr Jr.
Certificate No.
3950



MINERALS MANAGEMENT INCORPORATED
A Division of SCIENTIFIC SOFTWARE CORPORATION

DEVELOPMENT PLAN FOR SURFACE USE

FILON EXPLORATION CORPORATION

FEDERAL 3 WELL NO. 1

660' FSL, 2310' FWL, SEC. 3, T21N, R6W

SANDOVAL COUNTY, NEW MEXICO

1. Existing Roads

The main road is from Counselors Trading Post to Star Lake Compressor road, as shown on topographic map.

2. Planned Access Road

As shown on topographic map. Road to be 20' wide and ditched as required.

3. Location of Existing Wells

None

4. Location of Tank Batteries & Flowlines

Will be initially on location pad.

5. Location & Type of Water Supply (rivers, creeks, lakes, ponds and wells)

To be hauled from BLM Encino Water Supply Well.

6. Source of Construction Materials

Not applicable.

7. Method of Handling Waste Material

Waste material will be buried in the reserve pit on completion of well. Toilet facilities will be provided. Reserve pit will be backfilled.

8. Ancillary Facilities

No camps or airstrips will be used.

9. Wellsite Layout

See attached diagram. Location is on flat terrain.

10. Plans for Restoration of Surface

Will be restored in accordance with current Bureau of Land Management specifications.

11. Other Information

The topography of the area in the vicinity of the well and roads is a flat sandy soil covered with sagebrush and sparse vegetation.

12. Operator's Representative

Minerals Management, Inc., 501 Airport Dr., Suite 105,
Farmington, New Mexico 87401.

13. Certification

I hereby certify that I, or persons under my direct supervision, have inspected the proposed drillsite and access route; that I am familiar with the conditions which presently exist; that the statements made in this plan are, to the best of my knowledge, true and correct; and, that the work associated with the operations proposed herein will be performed by Filon Exploration Corporation and its contractors and subcontractors in conformity with this plan and the terms and conditions under which it is approved.

July 6, 1976
Date

J. Arnold Smith
Name and Title

Minerals Management, Inc.
Company

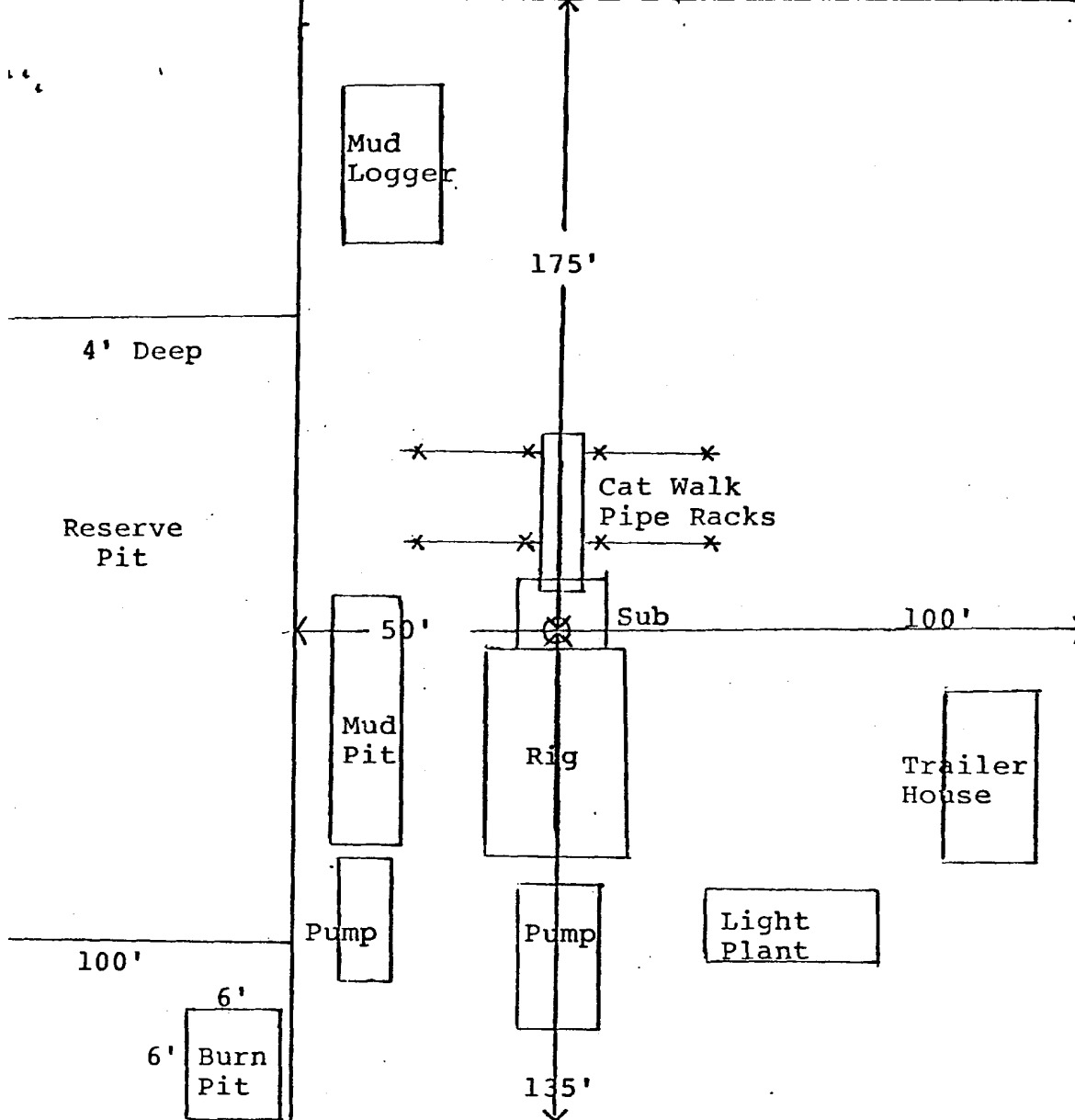
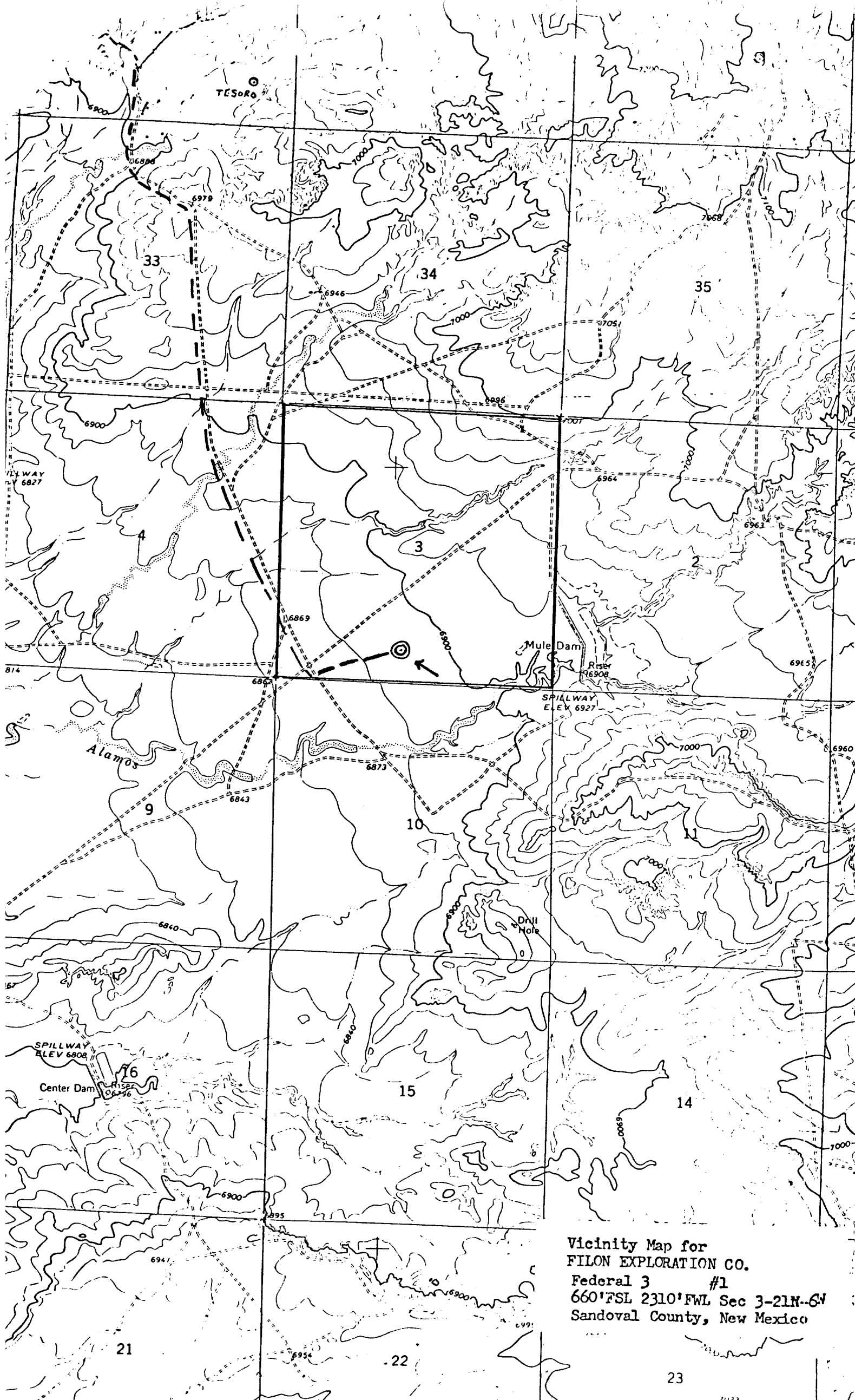


DIAGRAM OF WELL LOCATION
AND DRILLING RIG LAYOUT



Vicinity Map for
FILON EXPLORATION CO.
Federal 3 #1
660' FSL 2310' FWL Sec 3-21N-6W
Sandoval County, New Mexico