

UNITED STATES
DEPARTMENT OF THE INTERIOR
GEOLOGICAL SURVEY

30-043-20236

APPLICATION FOR PERMIT TO DRILL, DEEPEN, OR PLUG BACK

1a. TYPE OF WORK

DRILL ☒DEEPEN ☐PLUG BACK ☐

b. TYPE OF WELL

OIL
WELL ☒GAS
WELL ☐

OTHER

SINGLE
ZONE ☐MULTIPLE
ZONE ☐

2. NAME OF OPERATOR

Odessa Natural Corporation

3. ADDRESS OF OPERATOR

P. O. Box 3908, Odessa, Texas 79760

4. LOCATION OF WELL (Report location clearly and in accordance with any State requirements.)*

At surface

330° FNL, 2310° FWL

At proposed prod. zone

Same

14. DISTANCE IN MILES AND DIRECTION FROM NEAREST TOWN OR POST OFFICE*

15. DISTANCE FROM PROPOSED*

LOCATION TO NEAREST
PROPERTY OR LEASE LINE, FT.
(Also to nearest drig. unit line, if any)

330°

18. DISTANCE FROM PROPOSED LOCATION*
TO NEAREST WELL, DRILLING, COMPLETED,
OR APPLIED FOR, ON THIS LEASE, FT.

3500°

16. NO. OF ACRES IN LEASE

2560

19. PROPOSED DEPTH

7690°

17. NO. OF ACRES ASSIGNED
TO THIS WELL

80 Ac.

20. ROTARY OR CABLE TOOLS

Rotary

21. ELEVATIONS (Show whether DF, BT, GR, etc.)

7361° GL

22. APPROX. DATE WORK WILL START*

9-1-76

23.

PROPOSED CASING AND CEMENTING PROGRAM

| SIZE OF HOLE | SIZE OF CASING | WEIGHT PER FOOT | SETTING DEPTH | QUANTITY OF CEMENT |
|--------------|----------------|-----------------|---------------|--------------------|
| 12-1/4" | 8-5/8" | 24.0 | 300° | 200 sacks |
| 7-7/8" | 4-1/2" | 10.5 & 11.6 | 7690° | 800 sacks |

It is proposed to drill this well with rotary tools using mud as circulation medium through the Dakota Formation. Possible productive zones in the Dakota Formation will be completed. Production casing will be cemented in such a manner as to protect the Pictured Cliffs formation.

The N/2 NW/4, 80 Acres, Section 21 is dedicated to this well.

IN ABOVE SPACE DESCRIBE PROPOSED PROGRAM: If proposal is to deepen or plug back, give data on present productive zone and proposed new productive zone. If proposal is to drill or deepen directionally, give pertinent data on subsurface locations and measured and true vertical depths. Give blowout preventer program, if any.

24. For: Odessa Natural Corp.

SIGNED *Ewell N. Walsh*
Ewell N. Walsh, P.E.

President, Walsh Engr. &

TITLE Production Corporation DATE July 22, 1976

(This space for Federal or State office use)

PERMIT NO. _____

APPROVAL DATE _____

APPROVED BY _____

TITLE _____

DATE _____

CONDITIONS OF APPROVAL, IF ANY:

OK

*See Instructions On Reverse Side

N/2 NW/4

**NEW MEXICO OIL CONSERVATION COMMISSION
WELL LOCATION AND ACREAGE DEDICATION PLAT**

Form C-102
Supersedes C-128
Effective 1-1-65

All distances must be from the outer boundaries of the Section.

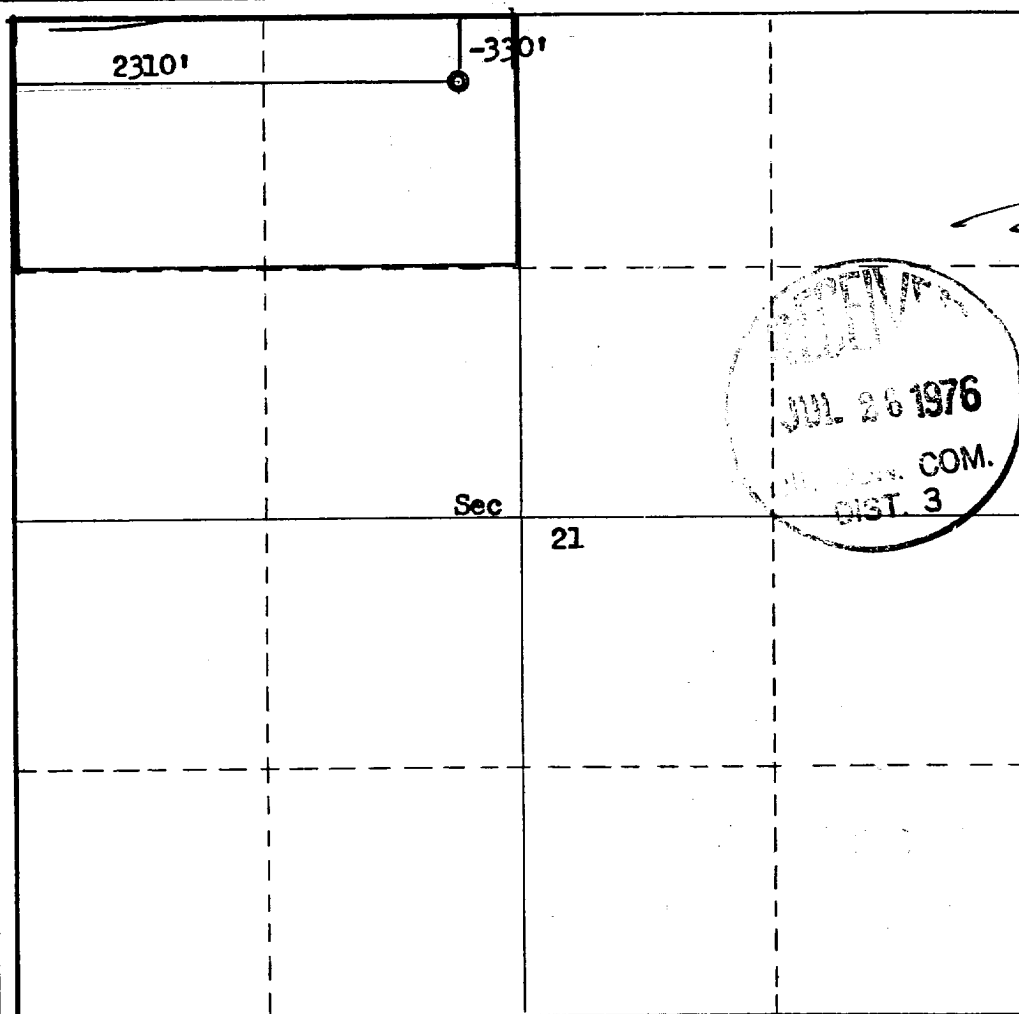
| | | | | | |
|---|--------------------------------------|------------------------|--------------------------------------|---------------------------|---------------------------------------|
| Operator Odessa Natural Corporation | | | Lease Chacon Jicarilla "D" | | Well No. 7 |
| Unit Letter C | Section 21 | Township 23N | Range 3W | County Sandoval | |
| Actual Footage Location of Well: 330 feet from the North line and 2310 feet from the West line | | | | | |
| Ground Level Elev. 7361 | Producing Formation Dakota | | Pool Chacon Dakota | | Dedicated Acreage: 80 Acres |

1. Outline the acreage dedicated to the subject well by colored pencil or hachure marks on the plat below.
2. If more than one lease is dedicated to the well, outline each and identify the ownership thereof (both as to working interest and royalty).
3. If more than one lease of different ownership is dedicated to the well, have the interests of all owners been consolidated by communitization, unitization, force-pooling, etc?

☐ Yes ☐ No If answer is "yes," type of consolidation _____

If answer is "no," list the owners and tract descriptions which have actually been consolidated. (Use reverse side of this form if necessary.) _____

No allowable will be assigned to the well until all interests have been consolidated (by communitization, unitization, forced-pooling, or otherwise) or until a non-standard unit, eliminating such interests, has been approved by the Commission.



CERTIFICATION

I hereby certify that the information contained herein is true and complete to the best of my knowledge and belief.
For: **Odessa Nat. Corp.**

Name

Ewell N. Walsh, P.E.

Position

President, Walsh Engr.

Company

& Production Corporation

Date

July 22, 1976

I hereby certify that the well location shown on this plat was plotted from field notes of actual surveys made by me or under my supervision, and that the same is true and correct to the best of my knowledge and belief.

Date Surveyed

March 30, 1976

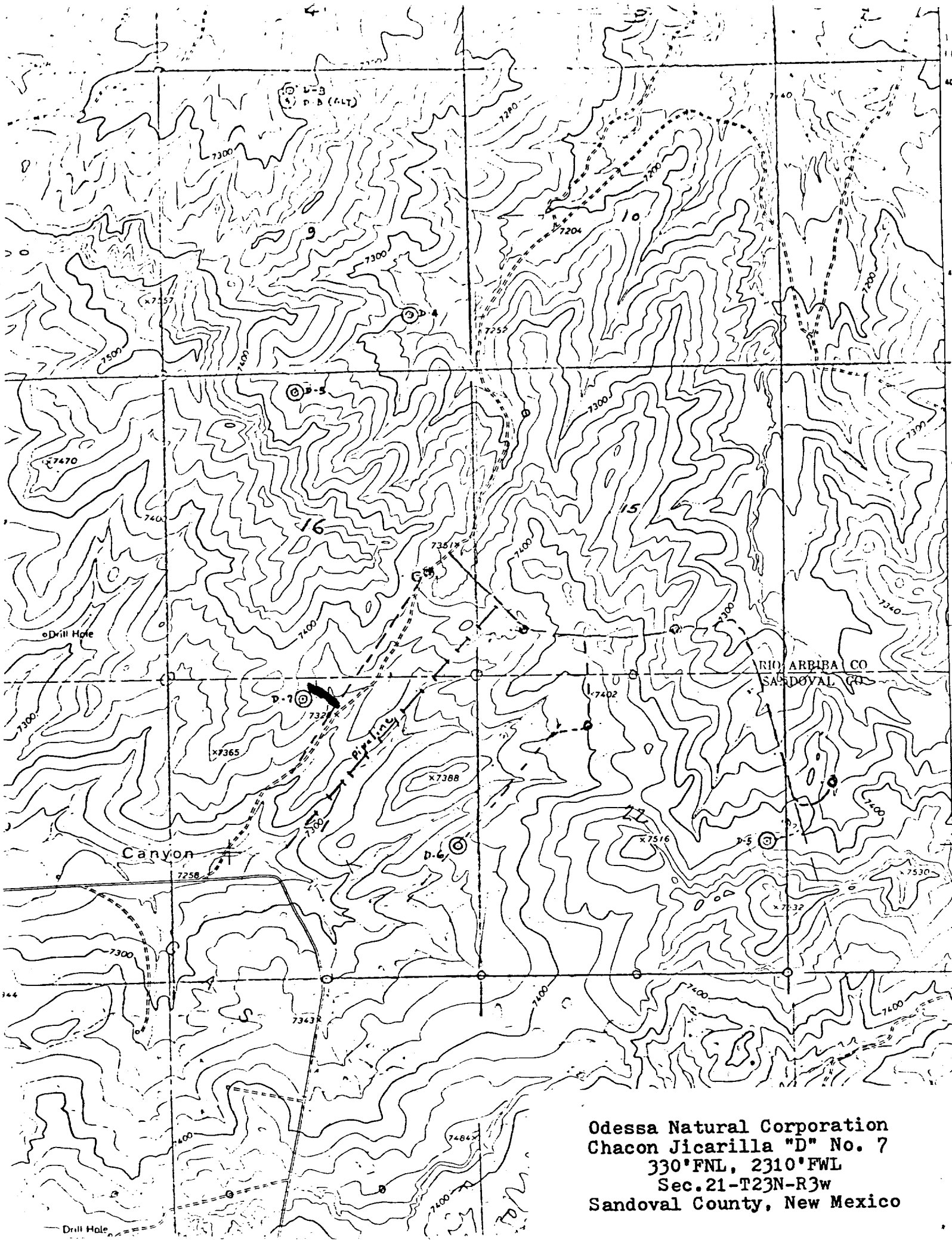
Registered Professional Engineer and/or Land Surveyor

Fred B. Kerr

Certificate No.

3950

0 330 660 990 1320 1650 1980 2310 2640 2000 1500 1000 500 0



Odessa Natural Corporation
Chacon Jicarilla "D" No. 7
330'FNL, 2310'FWL
Sec.21-T23N-R3w
Sandoval County, New Mexico