

UNITED STATES  
DEPARTMENT OF THE INTERIOR  
GEOLOGICAL SURVEY

JUL 29 1976

30-043-20237

APPLICATION FOR PERMIT TO DRILL, DEEPEN, OR PLUG BACK

1a. TYPE OF WORK

DRILL ☒

DEEPEN ☐

PLUG BACK ☐

b. TYPE OF WELL

OIL WELL ☒

GAS WELL ☐

OTHER ☐

SINGLE ZONE ☐

MULTIPLE ZONE ☐

2. NAME OF OPERATOR

Colorado Plateau Geological Services-TransOcean

3. ADDRESS OF OPERATOR

P. O. Box 537; Farmington, New Mexico 87401

4. LOCATION OF WELL (Report location clearly and in accordance with any State requirements.)

At surface

990' FNL, 500' FEL, Section 35, T. 13 N., R. 6 E.

At proposed prod. zone

same

14. DISTANCE IN MILES AND DIRECTION FROM NEAREST TOWN OR POST OFFICE\*

16 miles east of Bernalillo, New Mexico

18. DISTANCE FROM PROPOSED\*

LOCATION TO NEAREST PROPERTY OR LEASE LINE, FT. (Also to nearest drlg. unit line, if any)

500'

16. NO. OF ACRES IN LEASE

2490.95

17. NO. OF ACRES ASSIGNED TO THIS WELL

40

19. DISTANCE FROM PROPOSED LOCATION\* TO NEAREST WELL, DRILLING, COMPLETED, OR APPLIED FOR, ON THIS LEASE, FT.

None

19. PROPOSED DEPTH

1500'

20. ROTARY OR CABLE TOOLS

Rotary

21. ELEVATIONS (Show whether DF, RT, GR, etc.)

6260 GR

22. APPROX. DATE WORK WILL START\*

July 15, 1976 or ASAP

23.

PROPOSED CASING AND CEMENTING PROGRAM

SIZE OF HOLE	SIZE OF CASING	WEIGHT PER FOOT	SETTING DEPTH	QUANTITY OF CEMENT
12 1/2"	8 5/8" (new)	24.00#	60'	circulate
6 1/2"	4 1/2" (new)	10.50#	+ 1300'	60 sacks

This well will be spud in Quaternary terrace gravels and will be drilled with mud to total depth in the Cretaceous Point Lookout Formation after setting and cementing 8-5/8" surface casing. We will run electric logs at total depth and set 4 1/2" casing for production if warranted. Well will be cored if oil sands are encountered. We estimate the following formation tops: Tertiary Galisteo Formation - 60' Cretaceous Menefee Formation - 200' Cretaceous Point Lookout Formation - 1300'

A Uranium core hole drilled within 200' of the proposed location and to the same depth encountered no abnormal temperatures or pressures. No other potential hazards are anticipated. Pressure control equipment will include 60 feet of 8 1/2" 24.00# surface casing cemented to surface with blowout preventer.(7-1/16"3000 PSI). Bottom hole pressure is anticipated to be 700 PSI or less. Mud program will call for 9.2 lb/gal mud with hydrostatic head of 750 PSI at 1500 feet. Mud weight will be increased if (OVER PLEASE)

IN ABOVE SPACE DESCRIBE PROPOSED PROGRAM: If proposal is to deepen or plug back, give data on present productive zone and proposed new productive zone. If proposal is to drill or deepen directionally, give pertinent data on subsurface locations and measured and true vertical depths. Give blowout preventer program, if any.

24.

SIGNED

Bruce A. Black

TITLE

President

DATE

6/22/76

(This space for Federal or State office use)

PERMIT NO.

APPROVAL DATE

APPROVED BY

TITLE

DATE

CONDITIONS OF APPROVAL, IF ANY:

## Instructions

**General:** This form is designed for submitting proposals to perform certain well operations, as indicated, on all types of lands and leases for appropriate action by either a Federal or a State agency, or both, pursuant to applicable Federal and/or State laws and regulations. Any necessary special instructions concerning the use of this form and the number of copies to be submitted, particularly with regard to local, area, or regional procedures and practices, either are shown below or will be issued by, or may be obtained from, the local Federal and/or State office.

**Item 1:** If the proposal is to redrill to the same reservoir at a different subsurface location or to a new reservoir, use this form with appropriate notations. Consult applicable State or Federal regulations concerning subsequent work proposals or reports on the well.

**Item 4:** If there are no applicable State requirements, locations on Federal or Indian land should be described in accordance with Federal requirements. Consult local State or Federal office for specific instructions.

**Item 14:** Needed only when location of well cannot readily be found by road from the land or lease description. A plat, or plats, separate or on this reverse side, showing the roads to, and the surveyed location of, the well, and any other required information, should be furnished when required by Federal or State agency offices.

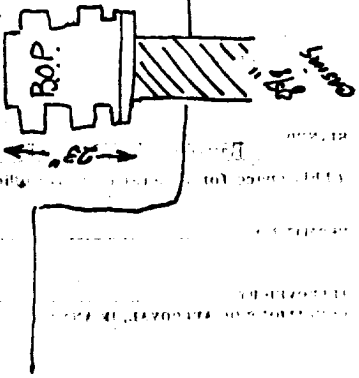
**Items 15 and 18:** If well is to be, or has been directionally drilled, give distances for subsurface location of hole in any present or objective production zone.

**Item 22:** Consult applicable Federal or State regulations, or appropriate officials, concerning approval of the proposal before operations are started.

--continued--

necessary for higher pressures. Mud will be low solids and low water loss. The well will be mud-logged from surface to T.D. with a total hydrocarbon sniffer and a hydrogen flame chromatograph. If oil sands are encountered the well will be cored. At T.D. the well will be logged with Dual Inductive Laterlog and a porosity tool (probably Density Log). The well will be spud as soon as approval is received, and is anticipated to take one week from move-in to logging. In anticipation of this years bicentennial celebration the well has been named the Bicentennial Freedom Federal No. 1 and it is hoped that the well can be spud on July 4th 1976 if approval was obtained in time.

Blowout preventer will be a Shaffer LWP hydraulic with a 7-1/16" bore. Blowout preventer will be attached to casing with a 8 5/8" flange. The BOP will be coupled with a hydraulic closing unit and will be 23" from the top of the flange to the top of the B.O.P.



**NEW MEXICO OIL CONSERVATION COMMISSION  
WELL LOCATION AND ACREAGE DEDICATION PLAT**

Form C-102  
Supersedes C-128  
Effective 1-1-65

All distances must be from the outer boundaries of the Section.

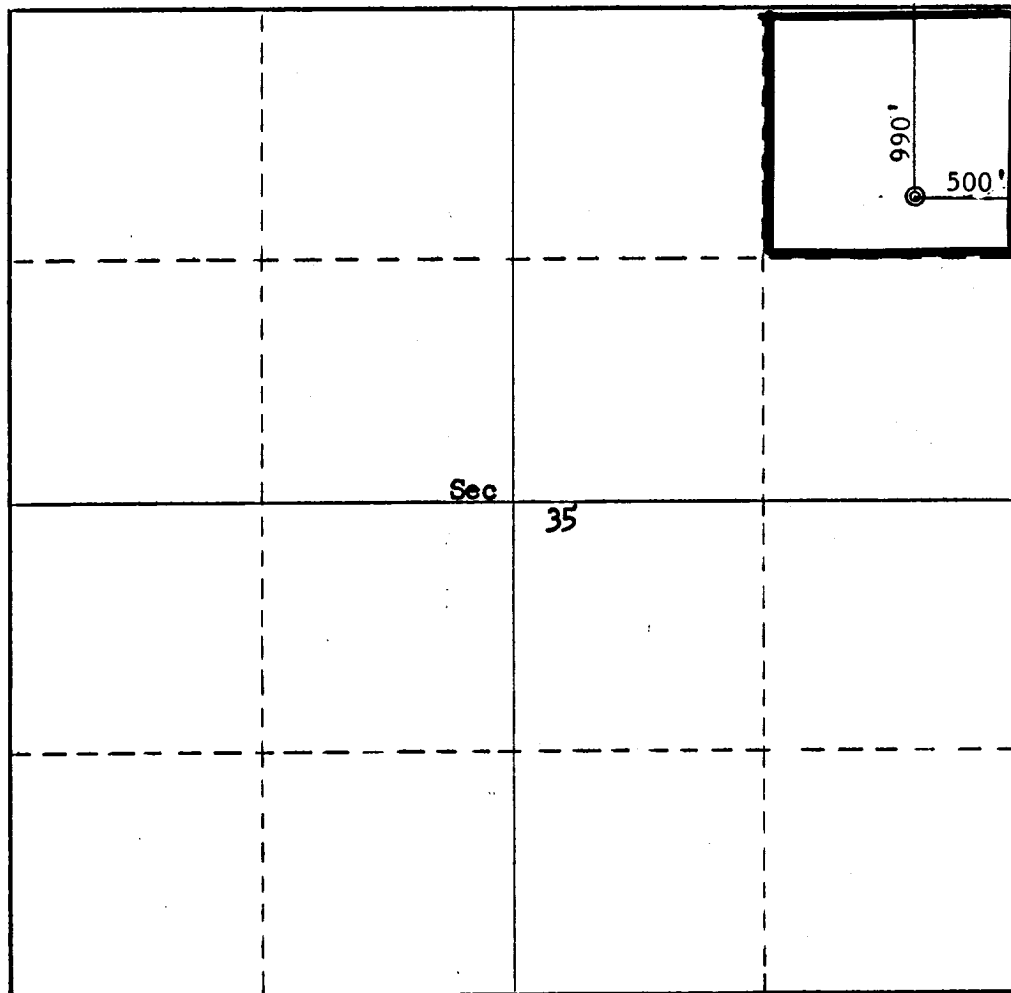
Operator <b>Colorado Plateau Geological Services-TransOcean</b>			Lease <b>Bicentennial Freedom</b>		Well No. <b>1</b>
Unit Letter <b>A</b>	Section <b>35</b>	Township <b>13N</b>	Range <b>6E</b>	County <b>Sandoval</b>	
Actual Footage Location of Well: <b>990</b> feet from the <b>North</b> line and <b>500</b> feet from the <b>East</b> line					
Ground Level Elev: <b>6260</b>	Producing Formation <b>Cretaceous</b>		Pool <b>Wildcat</b>	Dedicated Acreage: <b>40</b> Acres	

1. Outline the acreage dedicated to the subject well by colored pencil or ink marks on the plat below.
2. If more than one lease is dedicated to the well, outline each and identify the ownership thereof (both as to working interest and royalty).
3. If more than one lease of different ownership is dedicated to the well, have the interests of all owners been consolidated by communitization, unitization, force-pooling, etc?

☐ Yes ☐ No If answer is "yes," type of consolidation N.A.

If answer is "no," list the owners and tract descriptions which have actually been consolidated. (Use reverse side of this form if necessary.) N.A.

No allowable will be assigned to the well until all interests have been consolidated (by communitization, unitization, forced-pooling, or otherwise) or until a non-standard unit, eliminating such interests, has been approved by the Commission.



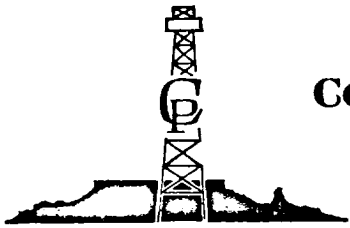
**CERTIFICATION**

I hereby certify that the information contained herein is true and complete to the best of my knowledge and belief.

*Bruce A. Black*  
Name  
**Bruce A. Black**  
Position  
**President**  
Company **Colorado Plateau Geological Services, Inc.**  
Date  
**June 22, 1976**

I hereby certify that the well location shown on this plat was plotted from field notes of actual surveys made by me or under my supervision, and that the same is true and correct to the best of my knowledge and belief.

Date Surveyed  
**June 22, 1976**  
Registered Professional Engineer and/or Land Surveyor  
*Fred B. Korr Jr.*  
**Fred B. Korr Jr.**  
Certificate No.  
**3950**



# COLORADO PLATEAU GEOLOGICAL SERVICES, INC.

SUITE 2E

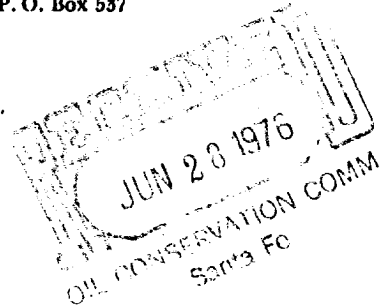
413 WEST MAIN STREET  
FARMINGTON, NEW MEXICO 87401

P. O. Box 537

(505) 325-9671

- ☆ Surface & Sub-Surface Studies
- ☆ Well Site Supervision
- ☆ Exploration Program Planning & Supervision
- ☆ Property Development and Management

United States Department of Interior  
Geological Survey - Durango District  
P. O. Box 1809  
Durango, Colorado 81301



Re: Multi-point surface use & operations plan  
for Colorado Plateau Geological Services-  
TransOcean Bicentennial Freedom Fed. No. 1  
NE $\frac{1}{4}$  of NE $\frac{1}{4}$ , Section 35, T. 13 N., R. 6 E.,  
Sandoval County, New Mexico

Gentlemen:

In compliance with governmental requirements, I hereby respectfully submit the following environmental surface use and operating plan data to accompany the application for permit to drill the above referenced test well.

1. Existing roads - Enclosure 1 is a xerox copy of a portion of the USGS 15 minute Albuquerque quadrangle topographic map on a scale 1 to 250,000 which shows the proposed wellsite in relation to Albuquerque and other small towns in the area. The proposed route from Interstate Hiway I-25 is shown in red. Access to the location from Interstate Hiway I-25 is by driving easterly up Arroyo Tongue on 7 miles of improved gravel road to the Diamond Tail Ranch Headquarters; then southeasterly by 8 $\frac{1}{2}$  miles of graded dirt road to the drill site as indicated by the attached vicinity map (Enclosure 2). All existing roads within a three mile radius are dirt roads in fair to excellent condition.
2. Planned access roads - Existing dirt roads will be utilized to within 100' of drill-site from which point a minimum width graded access road will be prepared to drillsite. This road will be on a less than 1% grade and will terminate at the drillsite. No culverts or surfacing material will be necessary. No fences will be cut and no additional gates or cattle guards will be needed.
3. Location of tank batteries, production facilities, and production, gathering and service lines - None at present. If production is established at this well, adequate production facilities including a tank battery will be installed on location immediately southeast of the wellsite. Sumps will be fenced to prevent hazards to wild life and livestock.
4. Location of existing wells - The only existing water well within a two mile radius is shown on Enclosure No. 2 circled in green.

5. Location and type of water supply (rivers, creeks, lakes, ponds, and wells). - Water for drilling this well will be trucked from a private water well located in Township 24N., Range 6 East, via existing dirt roads.
6. Source of construction materials. - No additional constructing materials are anticipated. If they are required they will be brought in by existing roads as set out in paragraphs 1 and 2 from Albuquerque, New Mexico.
7. Methods for handling waste disposal. - A reserve pit will be utilized for waste disposal. Trash will be buried four feet below the surface. Following drilling, mud pits will be fenced and allowed to dry, then filled with surface soil previously excavated. If necessary, produced oil or water will be trucked off the location.
8. Ancillary facilities - None planned at present time.
9. Wellsite layout - Wellsite layout is shown on Enclosure 3. The rig for this operation is small and no extensive cuts or fills are necessary. The location is flat and the only location construction necessary is digging of the pits, and minimum leveling of the surface. A cross section of the location is shown in Enclosure 4.
10. Plans for restoration of the surface. - If oil production is established, adequate production facilities including tank battery will be installed. The location except for wellhead site, production equipment, and necessary access road will be restored to original condition as much as possible by back-filling any cuts and leveling any fill to the original contours. (location is however essentially flat). Reseeding if necessary will be done on areas which have been disturbed. If no production is found following drilling the location will be restored by leveling to original topography and reseeding as necessary. Only the dry hole marker will remain on the original site and the 100' access road will be abandoned and reseeded as required. No reshaping of topography or drainage systems or soil treatments are anticipated inasmuch as the location is on a flat terrace covered by loose, wind blown sand and scarce grass cover.
11. Other information - The wellsite is located on a topographically flat Quaternary terrace or pediment known as the Ortiz Pediment surface. Terrace gravels of this feature are covered by a loose thin cover of wind blown sand and thin soil. The soil is a red sandy soil that supports a sparse vegetation of desert grasses and scattered Pinon and Juniper trees with occasional cholla cactus. Animal life in the area includes coyotes, rattlesnakes, and cottontail & jack rabbits. The surface is owned by the Federal Government and leased for grazing. No steep hillsides, gullies, water ponds, wells, lakes, or streams; occupied dwellings, or other facilities are in the near proximity of the location. No archeological, historical or cultural sites are in the immediate vicinity, A power line does come within 300 feet of the location.

12. Lessees' or operators' representative - The operators field representatives will be Mr. Mark E. Weidler or Mr. Bruce A. Black, both can be reached at P. O. Box 537; Farmington, New Mexico - Phone 325-9671 or 325-3710.

13. Certification:

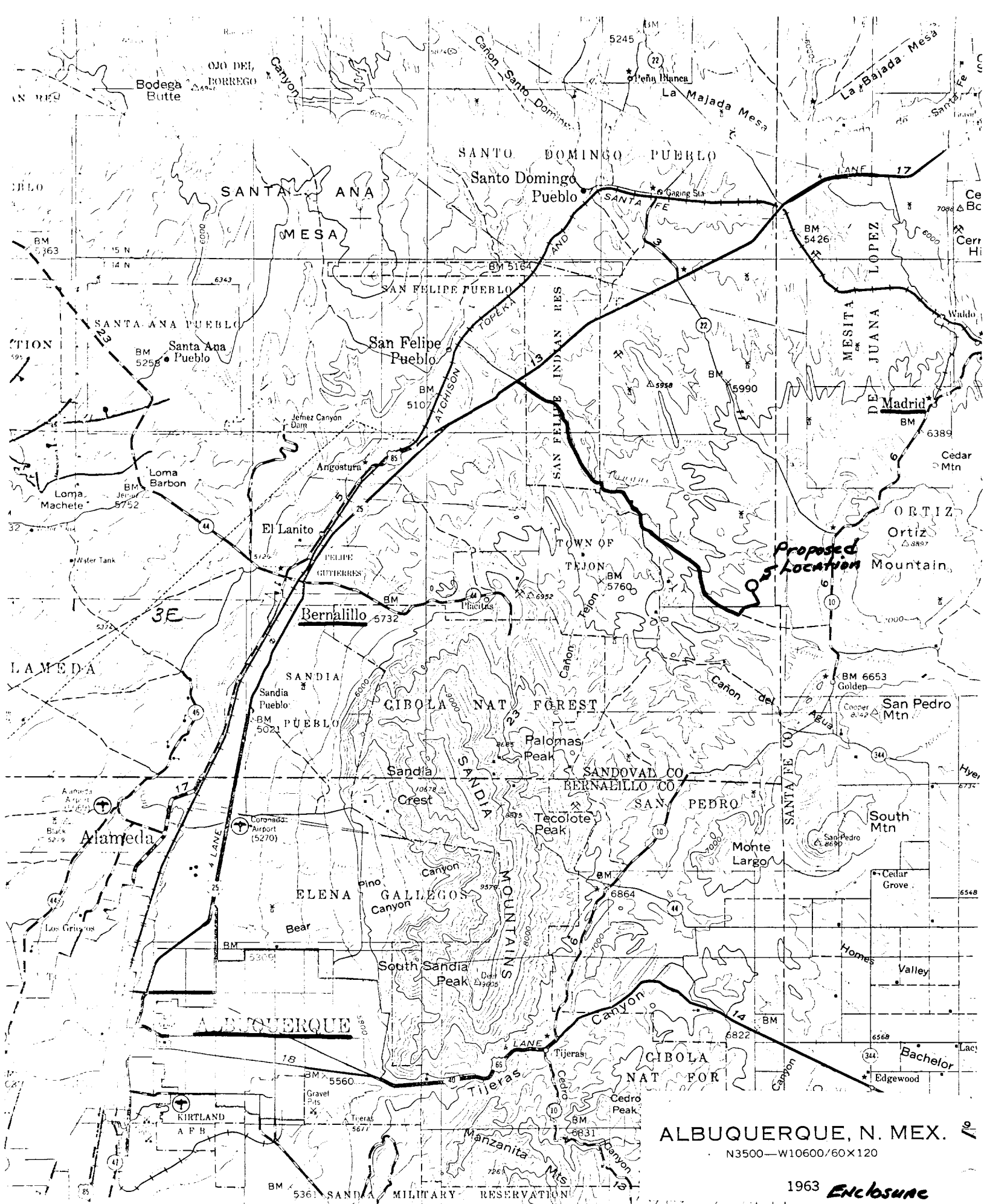
I hereby certify that I, or persons under my direct supervision, have inspected the proposed drillsite and access route; that I am familiar with the conditions which presently exist; that the statement made in this plan are, to the best of my knowledge, true and correct; and that the work associated with the operations proposed herein will be performed by Colorado Plateau Geological Services and its contractors and subcontractors in conformity with this plan and the terms and conditions under which it is approved.

June 22 1976  
(Date)

Bruce A. Black Pres.  
(Name & Title)

June 22 1976  
(Date)

Mark E. Weidler Vice Pres.  
(Name & Title)



ALBUQUERQUE, N. MEX.

N3500—W10600/60X120

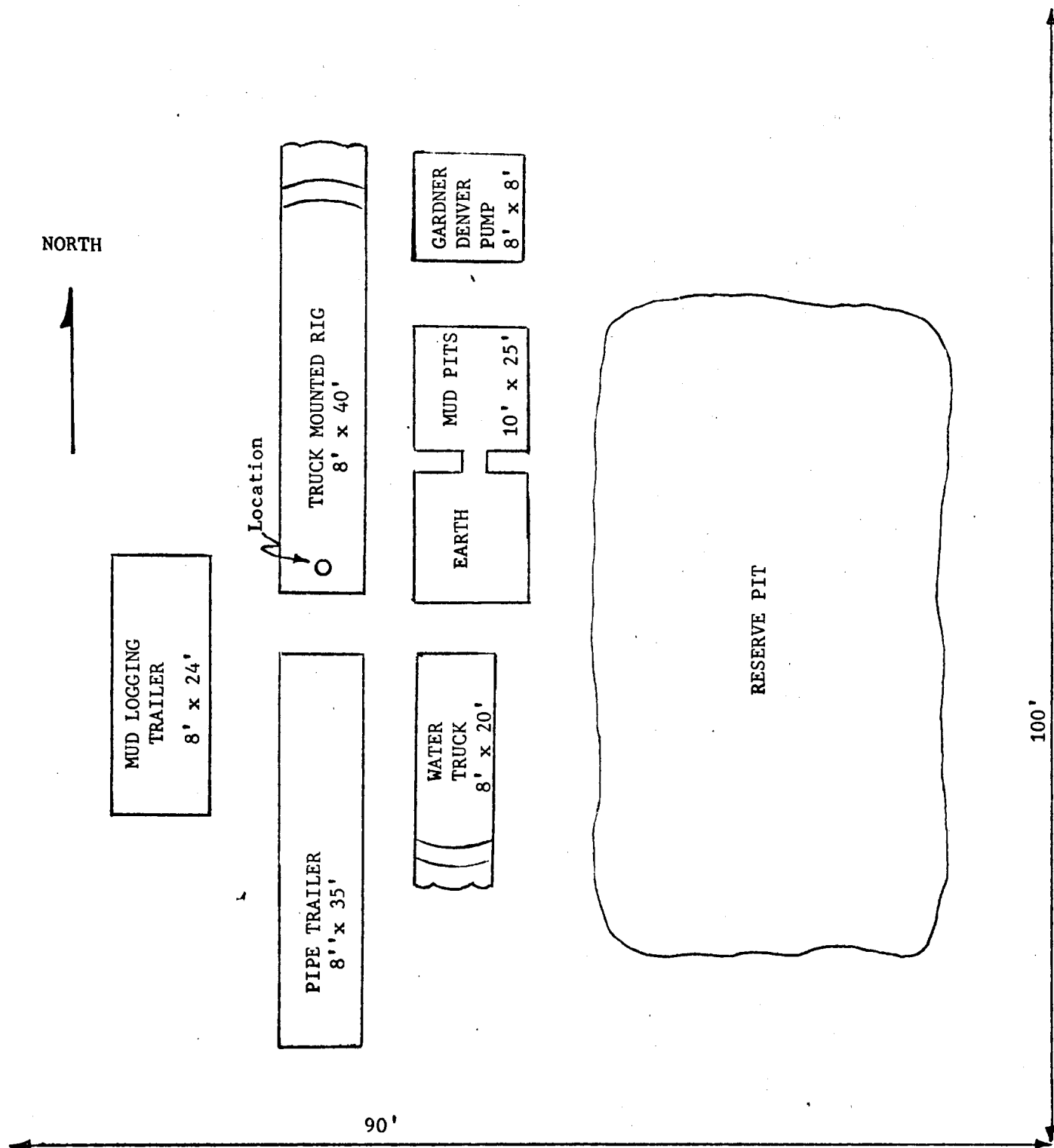
1963 *Enclosure*  
*No. 1*





Location Layout:

Colorado Plateau Geological Services-TransOcean  
Bicentennial Freedom Federal No. 1  
Section 35, T. 13 N., R. 6 E.  
Sandoval County, New Mexico



# CROSS SECTION

Colorado Plateau Geological Services-TransOcean  
 Bicentennial Freedom Federal No. 1  
 Section 35, T. 13 N., R. 6 E.  
 Sandoval County, New Mexico

