

UNITED STATES
DEPARTMENT OF THE INTERIOR
GEOLOGICAL SURVEY

APPLICATION FOR PERMIT TO DRILL, DEEPEN, OR PLUG BACK

1a. TYPE OF WORK

DRILL ☒DEEPEN ☐PLUG BACK ☐

b. TYPE OF WELL

OIL
WELL ☒GAS
WELL ☐OTHER ~~to be decided~~SINGLE
ZONE ☒MULTIPLE
ZONE ☐

2. NAME OF OPERATOR

J. Gregory Merrion & Robert L. Bayless

3. ADDRESS OF OPERATOR

P.O. Box 1541, Farmington, New Mexico 87401

4. LOCATION OF WELL (Report location clearly and in accordance with any State requirements.)*

At surface

990 feet south & west of line

At proposed prod. zone

14. DISTANCE IN MILES AND DIRECTION FROM NEAREST TOWN OR POST OFFICE*

same

15. DISTANCE FROM PROPOSED*

LOCATION TO NEAREST
PROPERTY OR LEASE LINE, FT.
(Also to nearest drlg. unit line, if any)

16. NO. OF ACRES IN LEASE

2560

18. DISTANCE FROM PROPOSED LOCATION*
TO NEAREST WELL, DRILLING, COMPLETED,
OR APPLIED FOR, ON THIS LEASE, FT.

19. PROPOSED DEPTH

4900

21. ELEVATIONS (Show whether DF, RT, GR, etc.)

6869 GL

17. NO. OF ACRES ASSIGNED
TO THIS WELL

160

20. ROTARY OR CABLE TOOLS

Rotary

22. APPROX. DATE WORK WILL START*

15 days after approval

23. PROPOSED CASING AND CEMENTING PROGRAM

SIZE OF HOLE	SIZE OF CASING	WEIGHT PER FOOT	SETTING DEPTH	QUANTITY OF CEMENT
13-3/4	10-3/4	40.5	150	150 sacks
7-7/8 - 9-7/8	(See Below)		2500-4900	

Will drill 13-3/4" hole to 150 feet and set 10-3/4" - 40.5# casing with 150 sacks. Will install BOP and test casing. Will drill 7-7/8" hole to 4900 feet to test Pictured Cliffs and Mesa Verde formations. Based upon results of logging and drilling, will run 2-7/8" casing for Pictured Cliffs completion and/or 4-1/2" casing for Mesa Verde completion. Cementing program will be to cover Mesa Verde and Pictured Cliffs formations with cement as far above Pictured Cliffs as possible. Will then perforate and stimulate.

IN ABOVE SPACE DESCRIBE PROPOSED PROGRAM: If proposal is to deepen or plug back, give data on present productive zone and proposed new productive zone. If proposal is to drill or deepen directionally, give pertinent data on subsurface locations and measured and true vertical depths. Give blowout preventer program, if any.

24. SIGNED J. L. Bayless TITLE Co-Owner DATE August 19, 1976
(This space for Federal or State office use)

PERMIT NO. _____ APPROVAL DATE _____

APPROVED BY _____ TITLE _____ DATE _____
CONDITIONS OF APPROVAL, IF ANY:*Okal*

*See Instructions On Reverse Side

**NEW MEXICO OIL CONSERVATION COMMISSION
WELL LOCATION AND ACREAGE DEDICATION PLAT**

Form C-102
Supersedes C-128
Effective 1-1-65

All distances must be from the outer boundaries of the Section.

Operator Merrion & Bayless			Lease Jicarilla Contract 428		Well No. 3
Unit Letter M	Section 29	Township 23N	Range 4W	County Sandoval	
Actual Footage Location of Well: 990 feet from the South line and 990 feet from the West line					
Ground Level Elev. 6869 Gr	Producing Formation Mesa Verde Point Lookout		Pool Undesignated area ext	Dedicated Acreage: 40 160 Acres	

1. Outline the acreage dedicated to the subject well by colored pencil or hachure marks on the plat below.

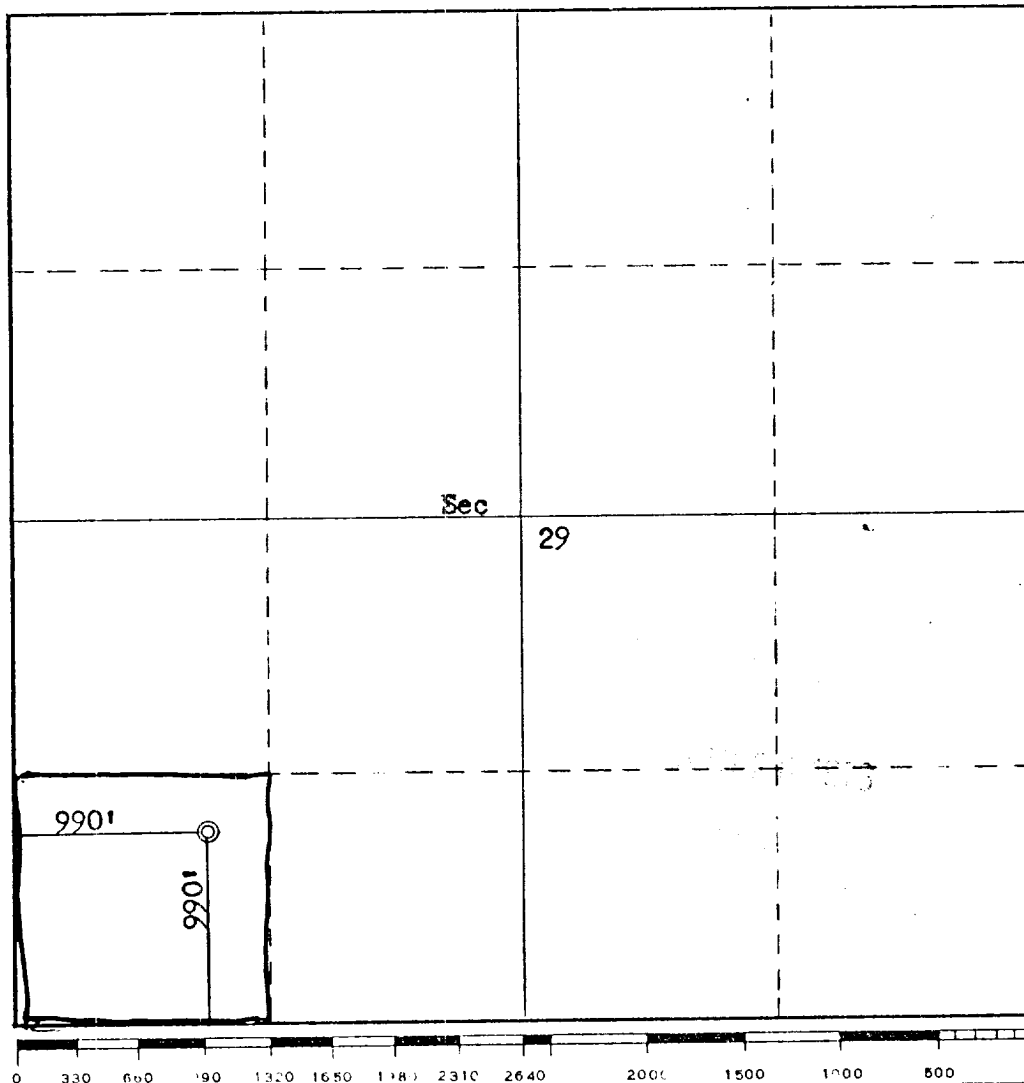
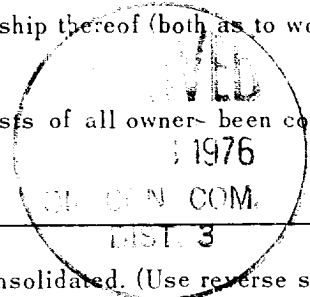
2. If more than one lease is dedicated to the well, outline each and identify the ownership thereof (both as to working interest and royalty).

3. If more than one lease of different ownership is dedicated to the well, have the interests of all owner- been consolidated by communitization, unitization, force-pooling, etc?

☐ Yes ☐ No If answer is "yes," type of consolidation _____

If answer is "no," list the owners and tract descriptions which have actually been consolidated. (Use reverse side of this form if necessary.) _____

No allowable will be assigned to the well until all interests have been consolidated (by communitization, unitization, forced-pooling, or otherwise) or until a non-standard unit, eliminating such interests, has been approved by the Commission.



CERTIFICATION	
I hereby certify that the information contained herein is true and complete to the best of my knowledge and belief.	
Name	J. Gregory Merrion
Position	Robert L. Bayless
	Co-Owners
Company	Merrion & Bayless
Date	August 16, 1976
I hereby certify that the well location shown on this plat was plotted from field notes of actual surveys made by me or under my supervision, and that the same is true and correct to the best of my knowledge and belief.	
Date Surveyed	August 10, 1976
Registered Professional Engineer and/or Land Surveyor	
	Fred B. Kerr Jr.
Certificate No.	3950

