

UNITED STATES
DEPARTMENT OF THE INTERIOR
GEOLOGICAL SURVEY

30-043-20250

APPLICATION FOR PERMIT TO DRILL, DEEPEN, OR PLUG BACK

1a. TYPE OF WORK

DRILL ☒DEEPEN ☐PLUG BACK ☐

b. TYPE OF WELL

OIL
WELL ☒GAS
WELL ☐OTHER ☐SINGLE
ZONE ☐MULTIPLE
ZONE ☐

2. NAME OF OPERATOR

Colorado Plateau Geological Services - TransOcean

3. ADDRESS OF OPERATOR

P. O. Box 537; Farmington, New Mexico 87401

4. LOCATION OF WELL (Report location clearly and in accordance with any State requirements.)

At surface

1330' FNL - 560' FEL Section 35, T. 13 N., R. 6 E. CON. COM. DIST. 3

At proposed prod. zone

14. DISTANCE IN MILES AND DIRECTION FROM NEAREST TOWN OR POST OFFICE*

16 miles east of Bernalillo, New Mexico

15. DISTANCE FROM PROPOSED*

LOCATION TO NEAREST
PROPERTY OR LEASE LINE, FT.
(Also to nearest drig. unit line, if any)

560'

16. NO. OF ACRES IN LEASE

2490.95

18. DISTANCE FROM PROPOSED LOCATION*
TO NEAREST WELL, DRILLING, COMPLETED,
OR APPLIED FOR, ON THIS LEASE, FT.

Fed. #2

19. PROPOSED DEPTH

1500+

17. NO. OF ACRES ASSIGNED
TO THIS WELL

40

20. ROTARY OR CABLE TOOLS

Rotary

21. ELEVATIONS (Show whether DF, RT, GR, etc.)

6255' GR

22. APPROX. DATE WORK WILL START*

9/29/76

23.

PROPOSED CASING AND CEMENTING PROGRAM

SIZE OF HOLE	SIZE OF CASING	WEIGHT PER FOOT	SETTING DEPTH	QUANTITY OF CEMENT
12 1/2"	8 5/8" (new)	24.00#	60'	circulate
6 1/2"	4 1/2" (new)	10.50#	1300' +	60 sacks

This well will be spud in Quaternary Terrace gravels and will be drilled with mud to total depth in the Cretaceous Point Lookout Formation after setting and cementing 8-5/8" surface casing. We will run electric logs at total depth and set 4 1/2" casing for production if warranted. Well will be cored if oil sands are encountered. We estimate the following formation tops: Tertiary Gilaisteo Formation - 70'
Cretaceous Menefee Formation - 300'
Cretaceous Point Lookout Formation - 1300'

The Bicentennial Freedom Fed No. 1 and a uranium core hole drilled within 300' of the proposed location and to the same depth encountered no abnormal temperatures or pressures. No other potential hazards are anticipated. Pressure control equipment will include 85' feet of 8 1/2" 24.00# surface casing cemented to surface with blowout preventer. (7-1/16" 3000 PSI). Bottom hole pressure is anticipated to be 700 PSI or less. Mud program will call for 9.2 lb/gal mud with hydrostatic head of 750 PSI at 1500 feet

(OVER)

IN ABOVE SPACE DESCRIBE PROPOSED PROGRAM: If proposal is to deepen or plug back, give data on present productive zone and proposed new productive zone. If proposal is to drill or deepen directionally, give pertinent data on subsurface locations and measured and true vertical depths. Give blowout preventer program, if any.

24.

SIGNED

Bruce A. Black

TITLE President

DATE 9/20/76

(This space for Federal or State office use)

PERMIT NO.

APPROVAL DATE

APPROVED BY

TITLE

DATE

CONDITIONS OF APPROVAL, IF ANY:

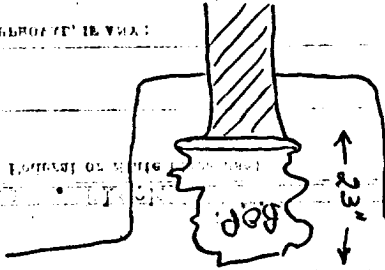
*See Instructions On Reverse Side

Item 1: If the proposal is to redrill to the same reservoir at a different subsurface location or to a new reservoir, the applicant shall submit a detailed geologic and geophysical study of the proposed area, including a detailed description of the proposed well, the proposed completion, and the proposed production facilities. The study shall also include a detailed description of the proposed well, the proposed completion, and the proposed production facilities. The study shall also include a detailed description of the proposed well, the proposed completion, and the proposed production facilities.

Item 14: Needed only when location of well cannot readily be found by road from the land or lease description. A party or parties holding the roads to, and the surveyed location of, the well, and any other required information, should be furnished when required by Federal or State agency officers.

--continued--

Blowout preventer will be Shaffer LWP hydraulic with a 7-1/16" bore. Blowout preventer will be attached to casing with a 8-5/8" flange. The BOP will be coupled with a hydraulic losing unit and will be 23' from the top of the flange to the top of the B.O.P.



Instructions

☆ U.S. GOVERNMENT PRINTING OFFICE: 1972-782-222/206 REGION NO. 8

NEW MEXICO OIL CONSERVATION COMMISSION
WELL LOCATION AND ACREAGE DEDICATION PLAT

Form C-102
Supersedes C-128
Effective 1-1-65

All distances must be from the outer boundaries of the Section.

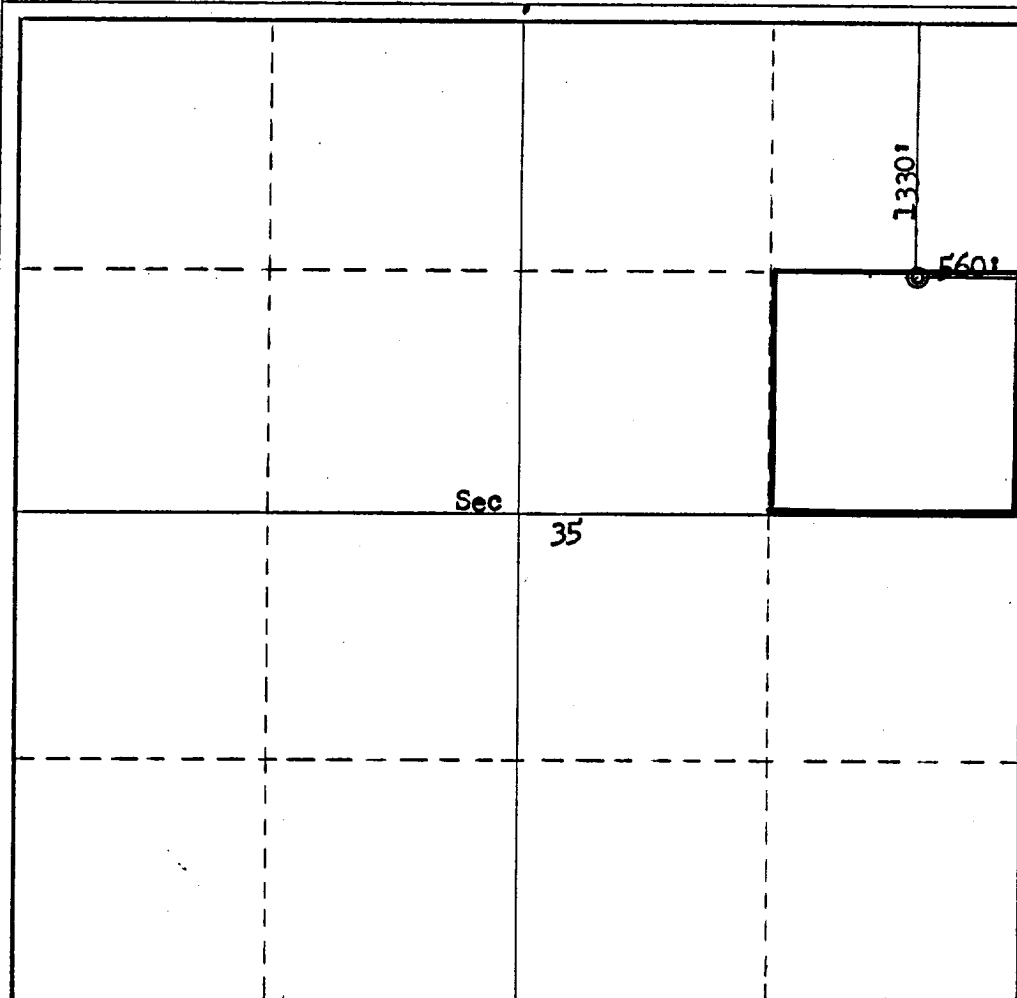
Operator Colorado Plateau Geological Services, Inc. - TransOcean		Lease Bicentennial Freedom		Well No. Fed. No. 4
Unit Letter H	Section 35	Township 13N	Range 6E	County Sandoval
Actual Footage Location of Well: 1330 feet from the North line and 560 feet from the East line				
Ground Level Elev. 6250	Producing Formation Mesaverde	Pool Wildcat	Dedicated Acreage: 40 Acres	

1. Outline the acreage dedicated to the subject well by colored pencil or hachure marks on the plat below.
2. If more than one lease is dedicated to the well, outline each and identify the ownership thereof (both as to working interest and royalty).
3. If more than one lease of different ownership is dedicated to the well, have the interests of all owners been consolidated by communitization, unitization, force-pooling, etc.

☐ Yes ☐ No If answer is "yes," type of consolidation

If answer is "no," list the owners and tract descriptions which have actually been consolidated. (Use reverse side of this form if necessary.)

No allowable will be assigned to the well until all interests have been consolidated (by communitization, unitization, forced-pooling, or otherwise) or until a non-standard unit, eliminating such interests, has been approved by the Commission.



CERTIFICATION

I hereby certify that the information contained herein is true and complete to the best of my knowledge and belief.

Bruce A. Black
Name

Bruce A. Black

Position

President

Company **Colorado Plateau Geological Services, Inc.**

Date

September 24, 1976

I hereby certify that the well location shown on this plat was plotted from field notes of actual surveys made by me or under my supervision, and that the same is true and correct to the best of my knowledge and belief.

Date Surveyed

September 20, 1976

Registered Professional Engineer and/or Land Surveyor

Fred B. Kane Jr.
Fred B. Kane Jr.

Certificate No.

3950