

UNITED STATES
DEPARTMENT OF THE INTERIOR
GEOLOGICAL SURVEY

APPLICATION FOR PERMIT TO DRILL, DEEPEN, OR PLUG BACK

1a. TYPE OF WORK

DRILL ☒DEEPEN ☐PLUG BACK ☐

b. TYPE OF WELL

OIL
WELL ☒GAS
WELL ☐

OTHER

SINGLE
ZONE ☒MULTIPLE
ZONE ☐

2. NAME OF OPERATOR

Houston Oil & Minerals Corporation

3. ADDRESS OF OPERATOR

Suite 504, 1700 Broadway, Denver, Colorado 80203

4. LOCATION OF WELL (Report location clearly and in accordance with any State requirements.)*

At surface

950' FNL, 755' FWL, SEC. 6, T15N, R3W

At proposed prod. zone

14. DISTANCE IN MILES AND DIRECTION FROM NEAREST TOWN OR POST OFFICE*

46 miles southwest of Cuba, N.M.

15. DISTANCE FROM PROPOSED*

LOCATION TO NEAREST
PROPERTY OR LEASE LINE, FT.
(Also to nearest drilg. unit line, if any)

755'

16. NO. OF ACRES IN LEASE

9185.87

17. NO. OF ACRES ASSIGNED
TO THIS WELL

51.30

18. DISTANCE FROM PROPOSED LOCATION*

TO NEAREST WELL, DRILLING, COMPLETED,
OR APPLIED FOR, ON THIS LEASE, FT.

-

19. PROPOSED DEPTH

8000'

20. ROTARY OR CABLE TOOLS

Rotary

21. ELEVATIONS (Show whether DF, RT, GR, etc.)

6201' Ungraded Ground Elevation

22. APPROX. DATE WORK WILL START*

February 15, 1977

23.

PROPOSED CASING AND CEMENTING PROGRAM

| SIZE OF HOLE | SIZE OF CASING | WEIGHT PER FOOT | SETTING DEPTH | QUANTITY OF CEMENT |
|--------------|----------------|-----------------|---------------|--------------------|
| 17 1/2" | 13 3/8" | 54.5# | 150' | 150 sacks |
| 12 1/4" | 9 5/8" | 32.3# | 1200' | 300-400 sacks |
| 8 3/4" | 5 1/2" | 15.5 & 17.0# | 8000' | 1000+ sacks |

Operator proposes to drill to 8000' to test Pennsylvanian formation. A 13 3/8" Conductor string will be set at 150'+ and cemented to surface. BOP's will be installed and tested and a 12 1/4" hole will be drilled with mud to 1200' where 9 5/8" Casing will be set and cemented. The BOP stack consisting of a Series 900 (3000 psi) double gate and a Series 900 Hydril plus the manifold will be tested before drilling 8 3/4" hole to approximately 8000'. A low solids-non dispersed mud will be used. Mud logging and sample analysis will be utilized from base of Conductor pipe to TD with Cores and DST's taken where necessary for evaluation. No abnormal pressures or temperatures are anticipated and the well should take less than 40 days to drill. The surface formation is Gallup. Other estimated formation tops are: Dakota 1100', Morrison 1150', Entrada 2025', Chinle 2250', San Andres 3700', and Pennsylvanian 5750'. The well is located on the Ignacio Chavez Land Grant.

IN ABOVE SPACE DESCRIBE PROPOSED PROGRAM: If proposal is to deepen or plug back, give data on present productive zone and proposed new productive zone. If proposal is to drill or deepen directionally, give pertinent data on subsurface locations and measured and true vertical depths. Give blowout preventer program, if any.

24.

SIGNED

J. Arnold Snell

Area Manager

TITLE Minerals Management Inc. DATE 1-25-77

(This space for Federal or State office use)

PERMIT NO.

APPROVAL DATE

APPROVED BY

TITLE

CONDITIONS OF APPROVAL, IF ANY:



**NEW MEXICO OIL CONSERVATION COMMISSION
WELL LOCATION AND ACREAGE DEDICATION PLAT**

Form C-102
Supersedes C-128
Effective 1-1-65

All distances must be from the outer boundaries of the Section.

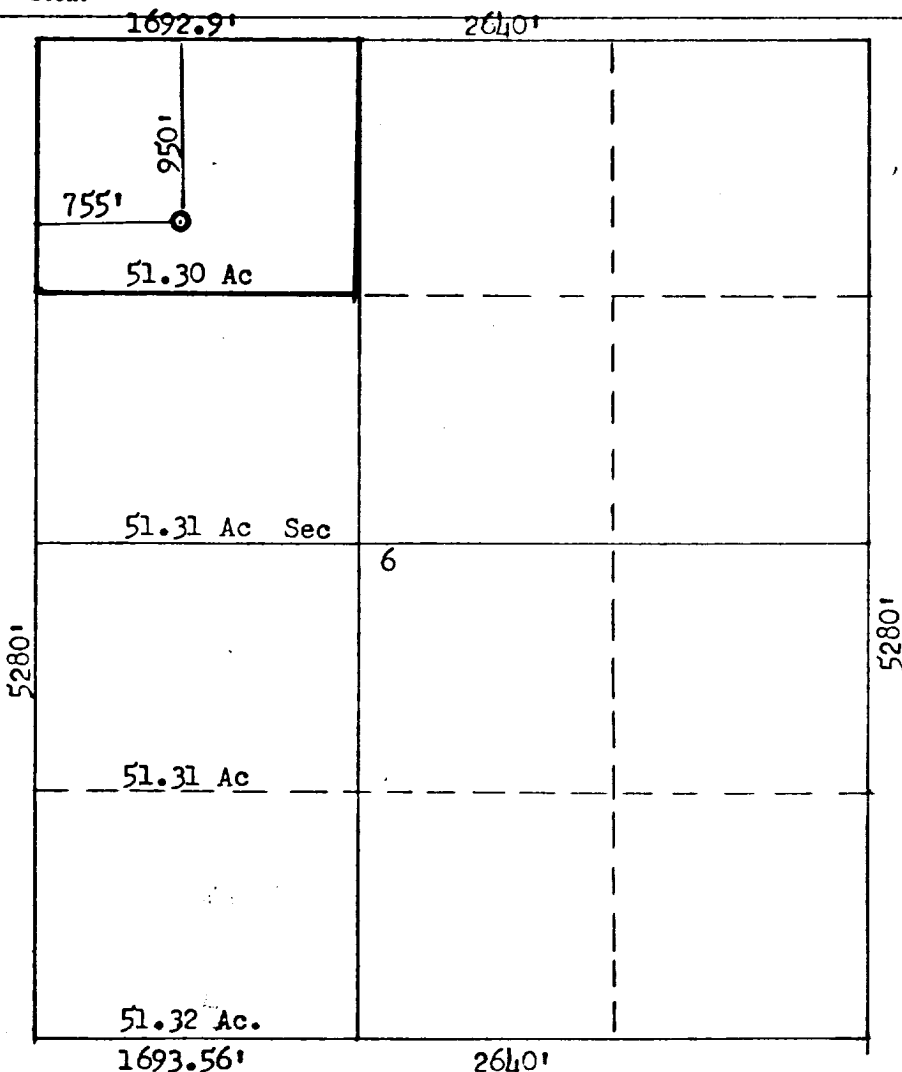
| | | | | | |
|--|---|------------------------|-------------------------------|---------------------------|--|
| Operator Houston Oil and Minerals | | | Lease Booth Drought | | Well No. 1 |
| Unit Letter C (Lot 1) | Section 6 | Township 15N | Range 3W | County Sandoval | |
| Actual Footage Location of Well: 950 feet from the North line and 755 feet from the West line | | | | | |
| Ground Level Elev: 6201 | Producing Formation Pennsylvanian | | Pool Wildcat | | Dedicated Acreage: 51.30 Acres |

1. Outline the acreage dedicated to the subject well by colored pencil or hatchure marks on the plat below.
2. If more than one lease is dedicated to the well, outline each and identify the ownership thereof (both as to working interest and royalty).
3. If more than one lease of different ownership is dedicated to the well, have the interests of all owners been consolidated by communitization, unitization, force-pooling, etc?

☐ Yes ☐ No If answer is "yes," type of consolidation _____

If answer is "no," list the owners and tract descriptions which have actually been consolidated. (Use reverse side of this form if necessary.) _____

No allowable will be assigned to the well until all interests have been consolidated (by communitization, unitization, forced-pooling, or otherwise) or until a non-standard unit, eliminating such interests, has been approved by the Commission.



SCALE: 1"=1000'

CERTIFICATION

I hereby certify that the information contained herein is true and complete to the best of my knowledge and belief.

| |
|--|
| Name <i>T. Arnold Small</i> |
| Position Area Manager |
| Company Minerals Management Inc. |
| Date 1-25-77 |

I hereby certify that the well location shown on this plat was plotted from field notes of actual surveys made by me or under my supervision, and that the same is true and correct to the best of my knowledge and belief.

| |
|--|
| Date Surveyed January 18, 1977 |
| Registered Professional Engineer and Land Surveyor <i>Fred B. Karl Jr.</i> Fred B. Karl Jr. |
| Certificate No. 3950 |